

▼ Shown from left to right: RCH306, RCH120, RCH1003

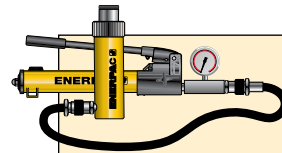


- Hollow plunger design allows for both pull and push forces
- Single-acting spring-return
- Nickel-plated, floating center tube on models over 20 tons increases product life
- Baked enamel finish for increased corrosion resistance
- Collar threads for easy fixturing
- RCH120 includes AR630 coupler and has 1/4 NPTF port
- RCH121 and RCH1211 have FZ1630 reducer and AR630 coupler, all other models feature CR400 coupler

▼ Hollow plunger cylinder RCH1003 used in an application for intermediate boom suspension on a dragline.



## Versatility in Testing, Maintenance and Tensioning Applications



### Pump and Cylinder Sets

All cylinders marked with an \* are available as **sets** (cylinder, gauge, couplers, hose and pump) for your ordering convenience.

Page: 62



### Lightweight Aluminum Hollow Plunger Cylinders

If you need a higher cylinder capacity-to-weight ratio the lightweight **RACH-Series**

Aluminum Hollow Plunger Cylinders are the perfect choice.

Page: 16



### Saddles

Most **RCH-Series** cylinders are equipped with smooth saddles. See table on next page for optional threaded saddles and all dimensional information.

Page: 35

Cylinder Capacity	Stroke	Model Number	Cyl. Effect. Area	Oil Cap.
(tons) [maximum]	(in)		(in <sup>2</sup> )	(in <sup>3</sup> )
<b>12</b> [13.8]	0.31	<b>RCH120</b>	2.76	0.86
	1.63	<b>RCH121*</b>	2.76	4.49
	1.63	<b>RCH1211</b>	2.76	4.49
	3.00	<b>RCH123</b>	2.76	8.29
<b>20</b> [23.6]	2.00	<b>RCH202*</b>	4.72	9.46
	6.10	<b>RCH206</b>	4.72	28.67
<b>30</b> [36.1]	2.50	<b>RCH302*</b>	7.22	18.05
	6.13	<b>RCH306</b>	7.22	44.23
<b>60</b> [63.6]	3.00	<b>RCH603*</b>	12.73	38.20
	6.00	<b>RCH606</b>	12.73	76.41
<b>100</b> [103.1]	3.00	<b>RCH1003*</b>	20.63	61.88

\* Available as a set. See note on this page.

# Single-Acting, Hollow Plunger Cylinders



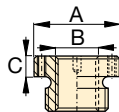
## Hoses

Enerpac offers a complete line of high quality hydraulic hoses. To ensure the integrity of your system, specify only Enerpac hydraulic hoses.

Page: 148

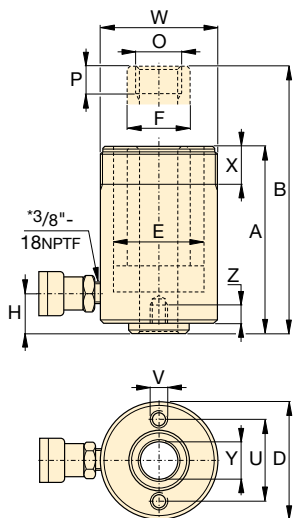
## Optional Threaded Hollow Saddles

Saddle Type	Cylinder Model No.	Saddle Model No.	Saddle Dimensions (in)		
			A	B	C
Threaded Hollow	RCH202, 206	HP2015	2.11	1"-8	0.38
	RCH302, 306	HP3015	2.49	1¼"-7	0.38
	RCH603, 606	HP5016	3.61	1½"-5½"	0.50
	RCH1003	HP10016	4.97	2½"-8	0.51

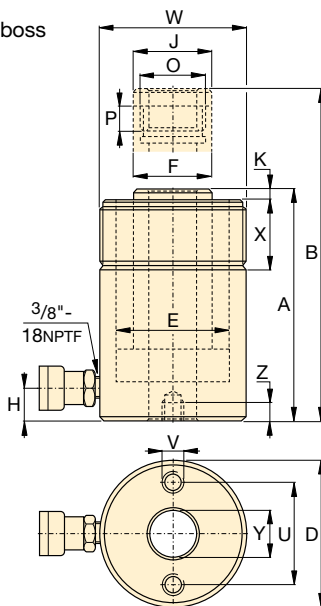


Smooth hollow saddles are standard on all RCH models (12-ton models are not equipped with saddles).

RCH121 and RCH1211 have a 1.88" diameter boss that protrudes 0.25" from base.



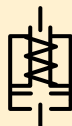
RCH120\* to RCH123 models



RCH202 to RCH1003 models

\* 1/4" NPT for RCH120 only

## RCH Series



Capacity:

**12 - 100 tons**

Stroke:

**0.31 - 6.13 inches**

Center Hole Diameter:

**0.77 - 3.11 inches**

Maximum Operating Pressure:

**10,000 psi**

## Base Mounting Hole Dimensions (in)

Model Number	Bolt Circle			Thread	Thread Depth
	U	V	Z		
RCH120	2.00	5/16"-18 UNC	0.35		
RCH121	-	-	-		
RCH1211	-	-	-		
RCH123	2.00	5/16"-18 UNC	0.50		
RCH202	3.25	3/8"-16 UNC	0.37		
RCH206	3.25	3/8"-16 UNC	0.37		
RCH302	3.63	3/8"-16 UNC	0.55		
RCH306	3.63	3/8"-16 UNC	0.55		
RCH603	5.13	1/2"-13 UNC	0.55		
RCH606	5.13	1/2"-13 UNC	0.55		
RCH1003	7.00	5/8"-11 UNC	0.75		

Collap. Height	Ext. Height	Outside Diam.	Cyl. Bore Diam.	Plngr. Diam.	Cyl. Base to Advance Port	Saddle Diameter	Saddle Protrusion from Plngr.	Plunger Internal Thread	Plunger Thread Length	Collar Thread	Collar Thread Length	Center Hole Diam.	Weight	Model Number
A (in)	B (in)	D (in)	E (in)	F (in)	H (in)	J (in)	K (in)	O (in)	P (in)	W (in)	X (in)	Y (in)	(lbs)	
2.19	2.50	2.75	2.13	1.38	0.38	-	-	3/4"-16 UN	0.63	2 3/4"-16	1.19	0.77	3.2	RCH120
4.75	6.38	2.75	2.13	1.38	0.98	-	-	-	-	2 3/4"-16	1.19	0.77	6.2	RCH121*
4.75	6.38	2.75	2.13	1.38	0.98	-	-	3/4"-16 UN	0.63	2 3/4"-16	1.19	0.77	6.2	RCH1211
7.25	10.25	2.75	2.13	1.38	0.98	-	-	-	-	2 3/4"-16	1.19	0.77	9.8	RCH123
6.38	8.38	3.88	2.88	2.13	0.75	2.13	0.27	1 9/16"-16 UN	0.75	3 7/8"-12	1.50	1.06	17	RCH202*
12.05	18.11	3.88	2.88	2.13	0.75	2.13	0.27	1 9/16"-16 UN	0.75	3 7/8"-12	1.50	1.06	31	RCH206
7.03	9.53	4.50	3.50	2.50	0.85	2.50	0.38	1 13/16"-16 UN	0.88	4 1/2"-12	1.66	1.31	24	RCH302*
13.00	19.13	4.50	3.50	2.50	1.00	2.50	0.38	1 13/16"-16 UN	0.88	4 1/2"-12	1.66	1.31	48	RCH306
9.75	12.75	6.25	4.88	3.63	1.25	3.61	0.50	2 3/4"-16 UN	0.75	6 1/4"-12	1.91	2.12	62	RCH603*
12.75	18.75	6.25	4.88	3.63	1.25	3.61	0.50	2 3/4"-16 UN	0.75	6 1/4"-12	1.91	2.12	78	RCH606
10.00	13.00	8.38	6.50	5.00	1.50	4.97	0.50	4"-16 UN	1.00	8 3/8"-12	2.38	3.11	132	RCH1003*