

PRODUCT INFORMATION PACKET



Model No: LM34162
Catalog No: LM34162
1 HP General Purpose Motor, 3 phase, 1200 RPM, 230/460 V, 56C Frame, TEFC
Three Phase TEFC Motors



Regal and Leeson are trademarks of Regal Beloit Corporation or one of its affiliated companies.
©2019 Regal Beloit Corporation, All Rights Reserved. MC017097E

The Regal logo is located in the bottom right corner. It features the word "REGAL" in a white, sans-serif font, set against a dark gray, rectangular background with a slightly distressed or metallic appearance.



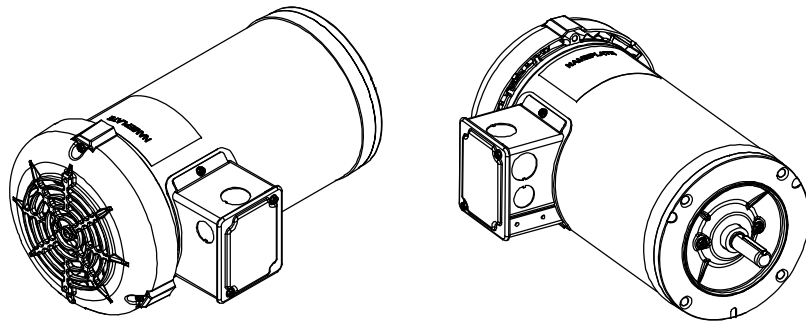
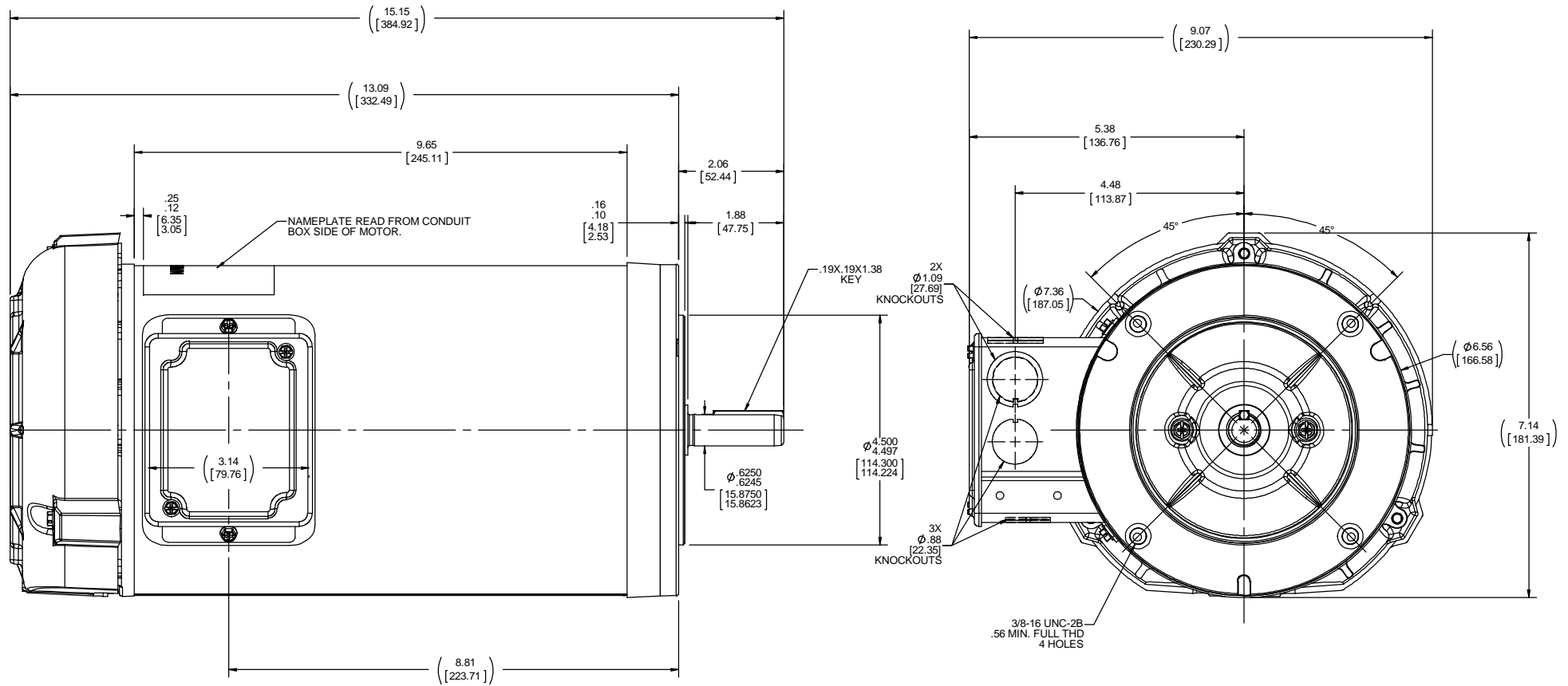
Nameplate Specifications

Output HP	1 Hp	Output KW	0.75 kW
Frequency	60 Hz	Voltage	230/460 V
Current	3.8/1.9 A	Speed	1140 rpm
Service Factor	1.15	Phase	3
Efficiency	82.5 %	Power Factor	60
Duty	Continuous	Insulation Class	B
Design Code	B	KVA Code	L
Frame	56C	Enclosure	Totally Enclosed Fan Cooled
Thermal Protection	No	Ambient Temperature	40 °C
Drive End Bearing Size	6205	Opp Drive End Bearing Size	6203
UL	Recognized	CSA	Y
CE	Y	IP Code	43

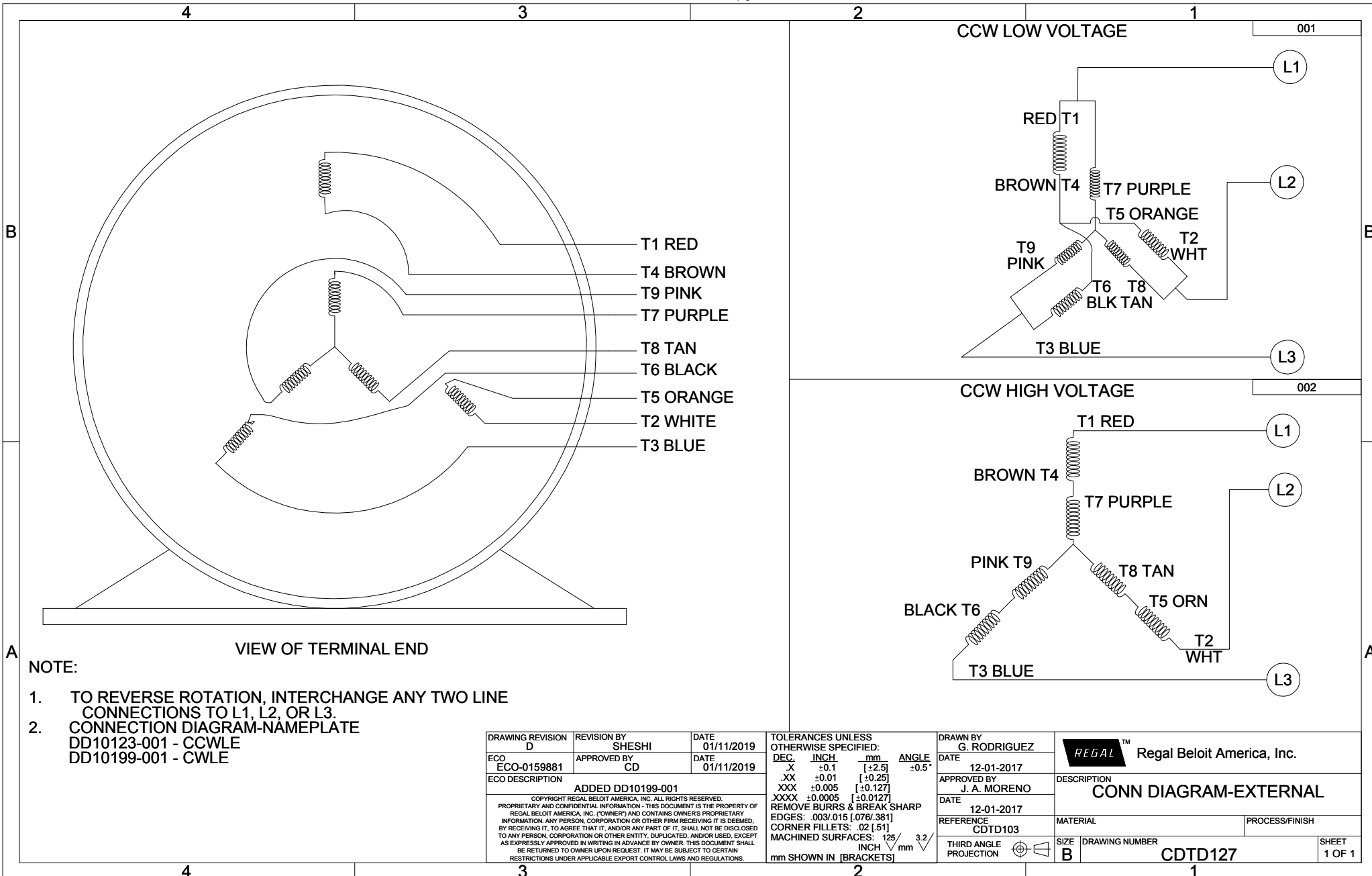
Technical Specifications

Electrical Type	Squirrel Cage Induction Run	Starting Method	Across The Line
Poles	6	Rotation	Reversible
Resistance Main	0 Ohms	Mounting	Round
Motor Orientation	Horizontal	Drive End Bearing	Ball
Opp Drive End Bearing	Ball	Frame Material	Rolled Steel
Shaft Type	NEMA 56	Overall Length	15.15 in
Frame Length	9.65 in	Shaft Diameter	0.625 in
Shaft Extension	2.06 in	Assembly/Box Mounting	F1/F2 CAPABLE

This is an uncontrolled document once printed or downloaded and is subject to change without notice. Date Created:01/11/2019



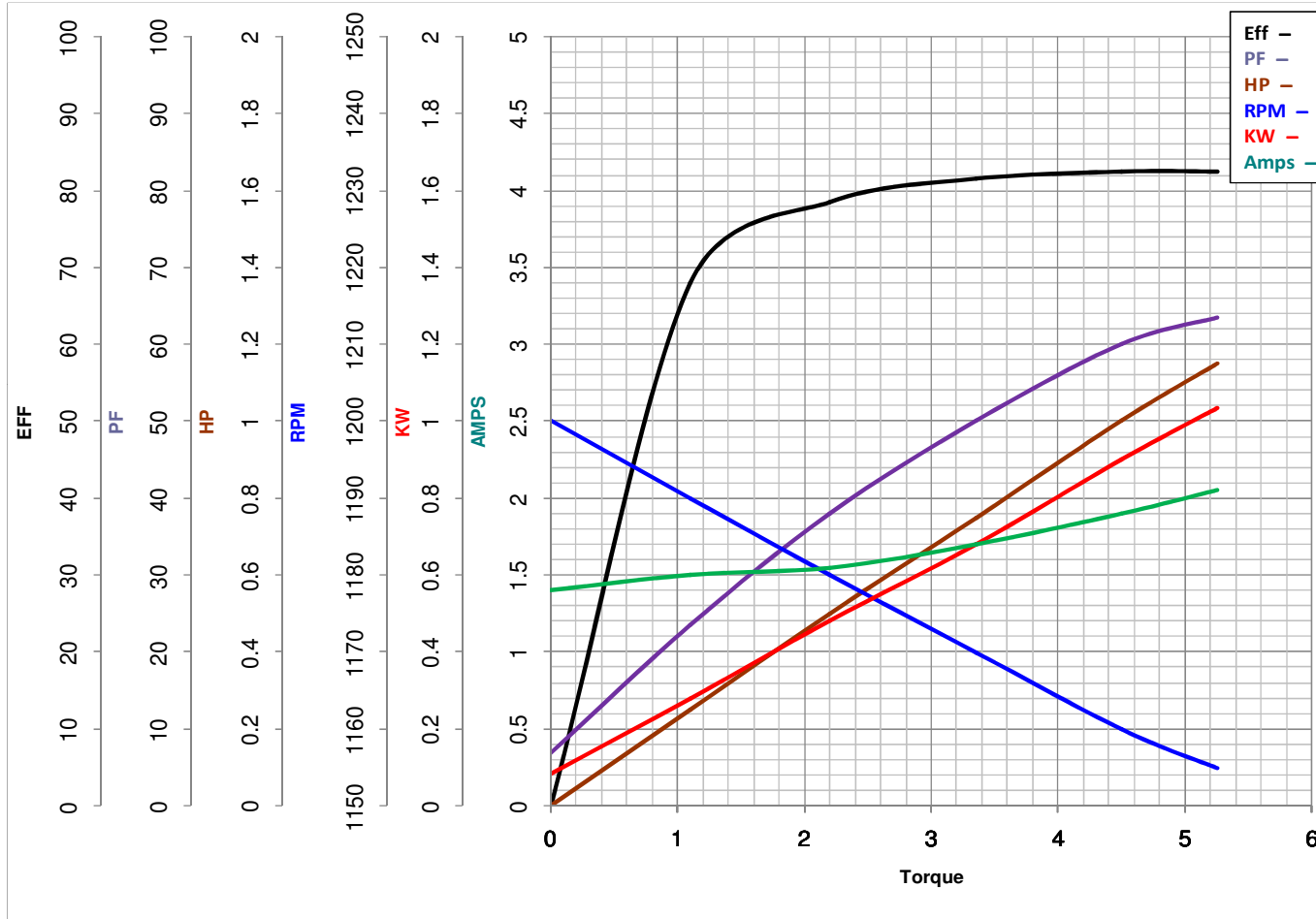
DRAWING REVISION B	REVISION BY D.SURYAWANSHI	DATE 09/24/2018	TOLERANCES UNLESS OTHERWISE SPECIFIED: DEC. INCH mm ANGLE .XX ±0.1 [±2.5] ±0.5° .XX ±0.02 [±0.51] .XXX ±0.005 [±0.127] .XXXX ±0.0005 [±0.0127] REMOVE BURRS & BREAK SHARP EDGES: .003/.015 [0.076/.381] X 45° CORNER FILLETS: R.02 [.51] MACHINED SURFACES: 125/32 INCH/ mm SHOWN IN [BRACKETS]	DRAWN BY E.VILLA	DATE 03-03-2017	THIRD ANGLE PROJECTION	SIZE C	DRAWING NUMBER OL56100240-001	SHEET 1 OF 1
ECO-0097684	APPROVED BY PVR	DATE 08/24/2018	DESCRIPTION OUTLINE 56H FR, TEFC, C-FACE	APPROVED BY A.ARRUEOLA	DATE 03-03-2017	REFERENCE	MATERIAL	PROCESS/FINISH	
COPYRIGHT REGAL BELOIT AMERICA, INC. ALL RIGHTS RESERVED. PROPRIETARY AND CONFIDENTIAL INFORMATION. THIS DOCUMENT IS THE PROPERTY OF REGAL BELOIT AMERICA, INC. FORNEITY AND CONTAINS OWNERS PROPRIETARY INFORMATION. ANY PERSON, CORPORATION OR OTHER FIRM RECEIVING IT IS DEMAND BY RECEIVING IT, TO AGREE THAT IT, AND/OR ANY PART OF IT, SHALL NOT BE DISCLOSED TO ANY PERSON, CORPORATION OR OTHER ENTITY, DUPLICATED, AND/OR USED, EXCEPT AS EXPRESSLY APPROVED IN WRITING IN ADVANCE BY OWNER. THIS DOCUMENT SHALL BE RETURNED TO OWNER UPON REQUEST. IT MAY BE SUBJECT TO CERTAIN RESTRICTIONS UNDER APPLICABLE EXPORT CONTROL LAWS AND REGULATIONS.									





LEESON ELECTRIC CORPORATION

TYPICAL PERFORMANCE CURVE for AC MOTOR

Model No LM34162Curve at 460
60
1Volts
HZ
HPHP 1.00PHASE 3VOLTS 230/460Catalog No LM34162AHZ 60RPM 1140

Torque in Lb.Ft

FL TORQUE 4.5 Lb.Ft
 BD TORQUE 18.4 Lb.Ft
 LR TORQUE 13.1 Lb.Ft

FL AMPS 3.8/1.9
 PU TORQUE 11.8 Lb.Ft
 LR AMPS 11.8

WINDING ZT6139-3

Date 11/5/2018