

PRODUCT INFORMATION PACKET



Model No: LM34555
Catalog No: LM34555
400 HP General Purpose Motor, 3 phase, 3600 RPM, 460 V, 449TS Frame, TEFC
Three Phase TEFC Motors



Regal and Leeson are trademarks of Regal Beloit Corporation or one of its affiliated companies.
©2019 Regal Beloit Corporation, All Rights Reserved. MC017097E

The Regal logo is located in the bottom right corner. It features the word "REGAL" in a white, bold, sans-serif font, set against a dark grey, trapezoidal background. The background of the entire page on the right side is a blue gradient with a halftone dot pattern.



Nameplate Specifications

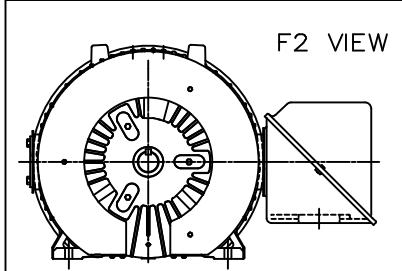
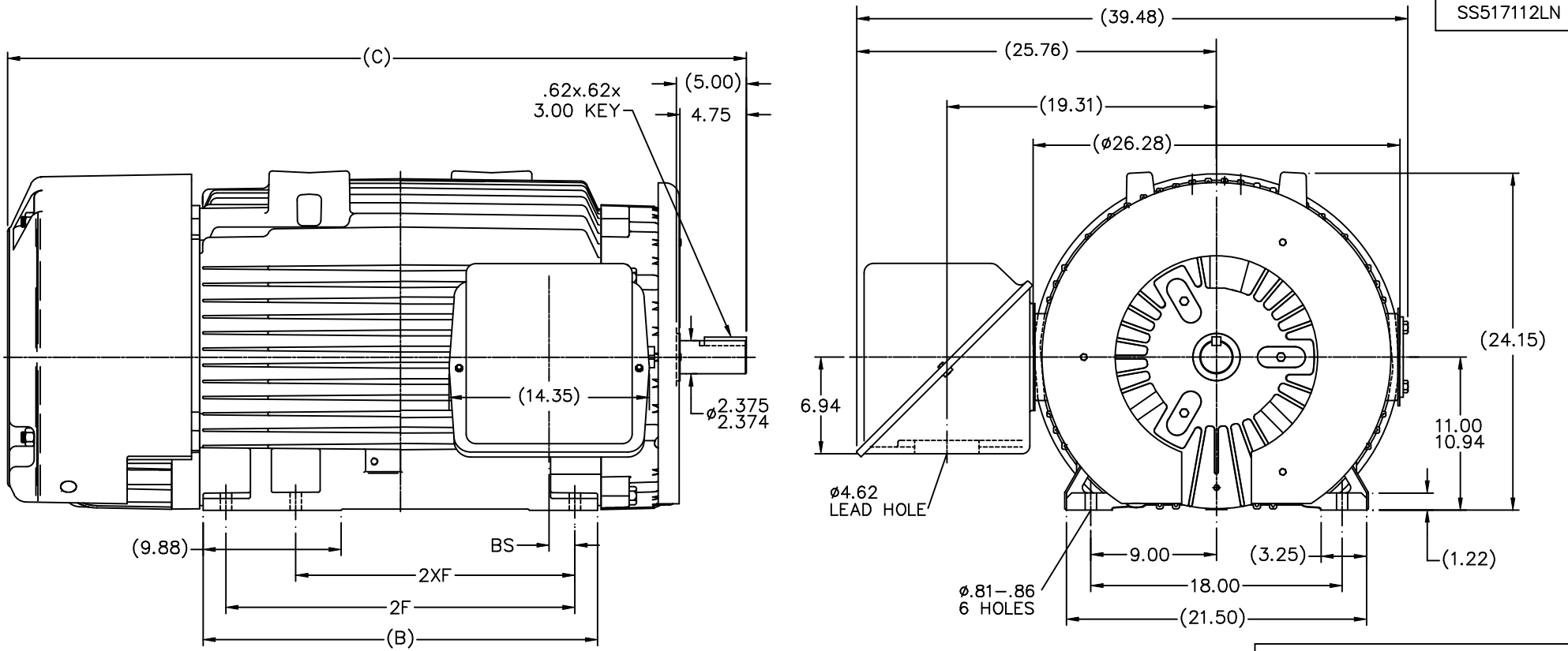
Output HP	400 Hp	Output KW	300.0 kW
Frequency	60 Hz	Voltage	460 V
Current	435.0 A	Speed	3575 rpm
Service Factor	1	Phase	3
Efficiency	95.8 %	Power Factor	89
Duty	Continuous	Insulation Class	H
Design Code	A	KVA Code	H
Frame	447/449TS	Enclosure	Totally Enclosed Fan Cooled
Thermal Protection	No	Ambient Temperature	40 °C
Drive End Bearing Size	6313	Opp Drive End Bearing Size	6313
UL	Recognized	CSA	Y
CE	Y	IP Code	43

Technical Specifications

Electrical Type	Squirrel Cage Induction Run	Starting Method	Wye Start Delta Run
Poles	2	Rotation	Reversible
Resistance Main	.005 Ohms	Mounting	Rigid base
Motor Orientation	Horizontal	Drive End Bearing	Ball
Opp Drive End Bearing	Ball	Frame Material	Cast Iron
Shaft Type	TS	Overall Length	52.96 in
Frame Length	28.75 in	Shaft Diameter	2.375 in
Shaft Extension	4.75 in	Assembly/Box Mounting	F1/F2 CAPABLE

This is an uncontrolled document once printed or downloaded and is subject to change without notice. Date Created:01/11/2019

SS517112LN



NOTES:
 1. CONDUIT BOX CAN BE ROTATED IN 90° STEPS.
 2. NAMEPLATES TO BE READ FROM CONDUIT BOX SIDE OF MOTOR

DASH	FRAME	B	C	2F	2XF	BS
2875	447TS	28.25	52.96		20.00	1.84
2875	449TS	28.25	52.96	25.00		1.84

		TOLERANCES UNLESS SPECIFIED		Lincoln MOTOR		DRAWN TJB 08-29-2003	
		DEC.	INCHES	CHK	ML	08-29-2003	
		.X	±.1			APPD	GK 08-29-2003
		.XX	±.03			SCALE	1=7
2	REVISED C'BOX & ADDED EXTERNAL BAFFLE	RJW	01-02-2008	ML	.XXX ±.005	TITLE OUTLINE - TEFC 449TS FR. - EXTENDED RATING	
1	NEW DRAWING	TJB	08-29-2003	ML	.XXX ±.0005	REF	
NO.	REVISION	BY & DATE	CHK	ANG	FINISH	FMF	PREV
	THIS DRAWING IN DESIGN AND DETAIL IS OUR PROPERTY AND MUST NOT BE USED EXCEPT IN CONNECTION WITH OUR WORK ALL RIGHTS OF DESIGN AND INVENTION ARE RESERVED THIS IS AN ELECTRONICALLY GENERATED DOCUMENT - DO NOT SCALE THIS PRINT		RFP	±7'30"			
		CAD FILE ss517112ln		SIZE	DRAWING NO.	PAGE	OF
		DIST WA		B	SS517112LN	2	REV.

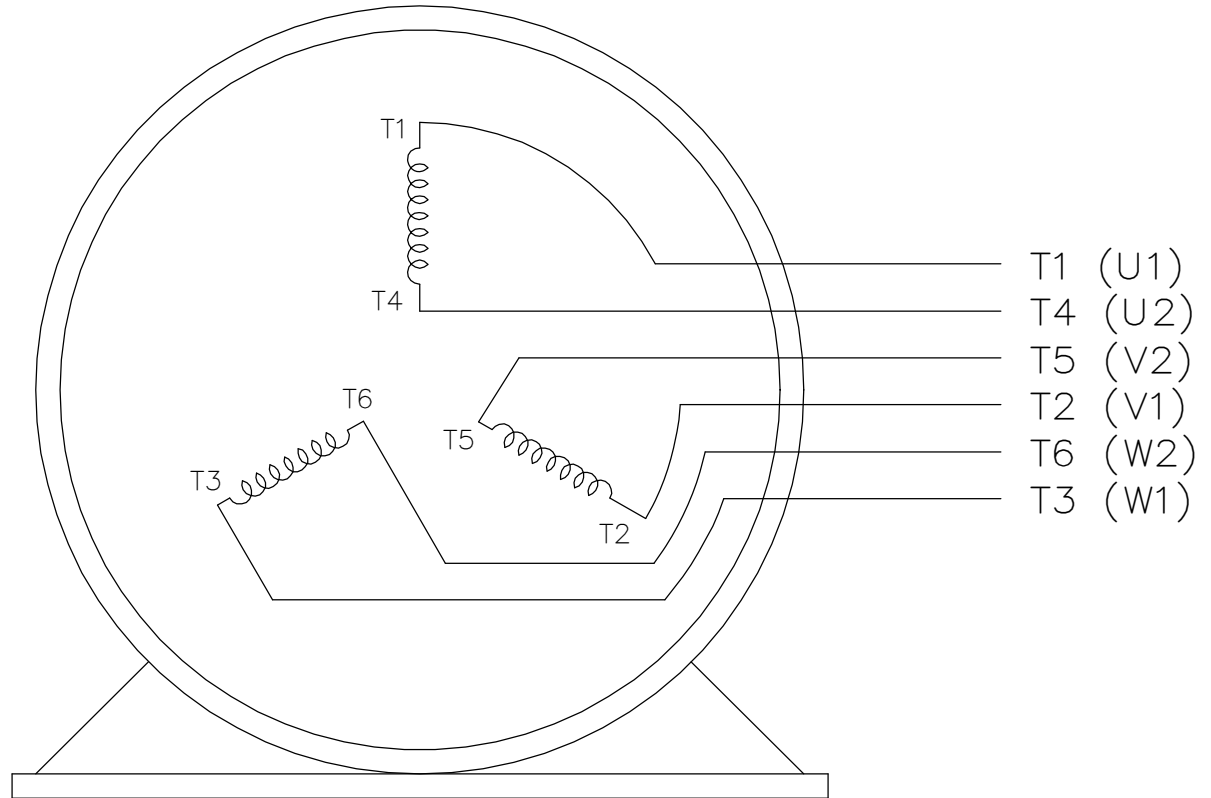
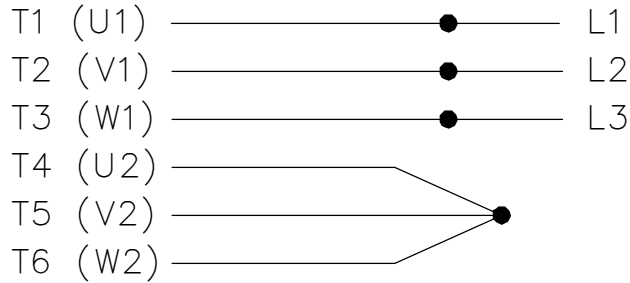
```
ERROR: syntaxerror  
OFFENDING COMMAND: --nostringval--
```

```
STACK:
```

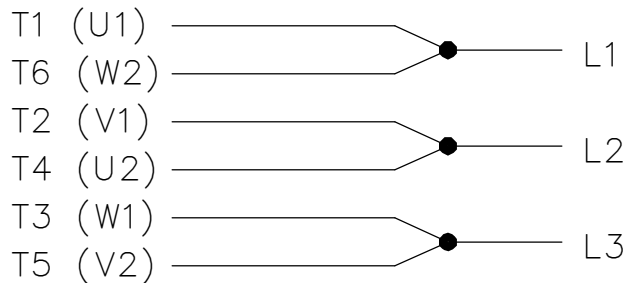
```
 /im  
-savelevel-
```

THREE PHASE
WYE START DELTA RUN

START



RUN



VIEW OF TERMINAL END

NOTE:
IEC LEAD MARKINGS ARE NOTED
IN PARANTHESES

DRAWING REVISION F	REVISION BY RTT	REV DATE/© DATE 05-29-2019	TOLERANCES (EXCEPT AS NOTED): DEC. INCH mm ANGLE .X ±0.1 [±3] ±7' 30" .XX ±0.02 [±0.5] .XXX ±0.005 [±0.13] .XXXX ±0.0005 [±0.013] REMOVE BURRS & BREAK SHARP EDGES: .003/.015 [.08/.38] X 45° CORNER FILLETS: R.02 [.5] MACHINED SURFACES: 200/ 5.1 INCH mm mm DIMENSIONS IN [BRACKETS] ARE FOR REFERENCE ONLY	DRAWN BY LZ	Regal Beloit America, Inc.
ECO ECO-0167538	APPROVED BY JWA	DATE 05-29-2019		DATE 01-06-1994	
ECO DESCRIPTION UPDATED TITLE BLOCK			REMOVED	APPROVED BY GK	DESCRIPTION CONNECTION DIAGRAM 3<MOD-DIAM> - WYE START DELTA RUN
COPYRIGHT (PER REVISION DATE) REGAL BELOIT AMERICA, INC. ALL RIGHTS RESERVED. PROPRIETARY AND CONFIDENTIAL INFORMATION - THIS DOCUMENT IS THE PROPERTY OF REGAL BELOIT AMERICA, INC. ("OWNER") AND CONTAINS OWNER'S PROPRIETARY INFORMATION. ANY PERSON, CORPORATION OR OTHER FIRM RECEIVING IT IS DEEMED, BY RECEIVING IT, TO AGREE THAT IT, AND/OR ANY PART OF IT, SHALL NOT BE DISCLOSED TO ANY PERSON, CORPORATION OR OTHER ENTITY, DUPLICATED, AND/OR USED, EXCEPT AS EXPRESSLY APPROVED IN WRITING IN ADVANCE BY OWNER. THIS DOCUMENT SHALL BE RETURNED TO OWNER UPON REQUEST. IT MAY BE SUBJECT TO CERTAIN RESTRICTIONS UNDER APPLICABLE EXPORT CONTROL LAWS AND REGULATIONS.			DATE 01-18-1994	REFERENCE	MATERIAL
			THIRD ANGLE PROJECTION	SIZE A	PROCESS/FINISH
				DRAWING NUMBER EE7340	SHEET 1 OF 1



1051 CHEYENNE AVE.
 GRAFTON, WI 53024
 PH. 262-277-8810

DATA VOLTS: 460

CERTIFICATION DATA SHEET

CONN. DIAGRAM: A-EE7340
 OUTLINE: B-SS517112LN-2875
 WINDING: T449261

CAT #: LM34555

NONE 1

TYPICAL MOTOR PERFORMANCE DATA

HP	KW	SYNC RPM	FL RPM	FRAME	ENCLOSURE	TYPE	KVA CODE	DESIGN	
400	298	3600	3575	447/449TS	TEFC	TFN	H	A	
PH	HZ	VOLTS	AMPS	START TYPE	DUTY	INSL	S.F.	AMB	ELEV.
3	60	460	435	NVE START DELTA RUN	CONT	H	1.15	40	3300

F.L. EFF	F.L. PF	3/4 LD EFF	3/4 LD PF	1/2 LD EFF	1/2 LD PF	GTD EFF	ELECT. TYPE
95.8	89.0	95.8	86.0	95.4	79.0	95.4	SQ CAGE IND RUN

F.L. TORQUE	LB-FT	LR AMPS @ 460 V	L.R. TORQUE	B.D. TORQUE	F.L. RISE (° C)
588	3.500	1.225	208%	1,900	88

PRESSURE @ 3	SOUND	POWER	ROTOR WK ²	MAX. LOAD WK ²	SAFE STALL TIME	STARTS/HOUR	MOTOR WGT
82	91	91	61.0	0	10	0	3250 LB.

*** SUPPLEMENTAL INFORMATION ***

DE BRACKET	ODE BRACKET TYPE	MOUNT TYPE	MOTOR ORIENTATION	SEVERE DUTY	HAZARDOUS LOCATION	DRIP COVER	SCREENS	PAINT
STANDARD	STANDARD	RIGID	HORIZONTAL	NO	NONE	NO	NONE	WATTS/SAVER

BEARINGS	GREASE	SHAFT TYPE	SPECIAL DE	SPECIAL ODE	SHAFT	MATERIAL	FRAME MATERIAL
DE ODE BALL BALL 6313 6313	POLYREX EM	TS	NONE	NONE	1045	HOT ROLLED (C-204)	CAST IRON

THERMOSTATS	PROTECTORS	WDG RTD's	BRG RTD's	THERMISTORS	CONTROL	SPACE HEATERS
NONE	NOT	NONE	NONE	NONE	FALSE	NA

R1 (ohms/ph)	R2 (ohms/ph)	X1 (ohms/ph)	X2 (ohms/ph)	Xm (ohms/ph)	VIBRATION (in/sec)	FLOAT
0.005	0.004	0.047	0.059	2.073	0.150	ODE

* N O T E S *		INVERTER TORQUE: NONE INV. HP SPEED RANGE: NONE	
		ENCODER: NONE	
		BRAKE: NONE	
		FT-LB: N/A	
		VOLTAGE: NONE	
		NONE PPR	

DATE: 9/11/2018	UL: V-INS, CONST UL REC
-----------------	-------------------------

Data Sheet

Date: 9/11/2018

LM34555



Data @ 460 V

Motor Load Data

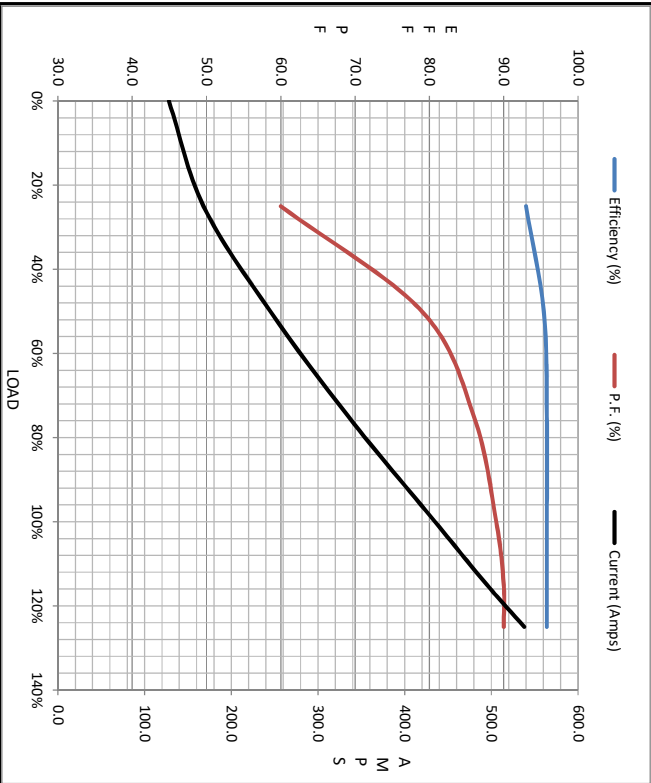
Load	0%	25%	50%	75%	100%	115%	125%	LR
Current (Amps)	128	168	245	335	435	495	538	3,500
Torque (ft-lb)	0.00	146	293	440	588	677	737	1,225
RPM	3600	3595	3588	3562	3575	3,570	3568	0
Efficiency (%)		93.0	95.4	95.8	95.8	95.8	95.8	
P.F. (%)	4.5	60.0	79.0	86.0	89.0	90.0	90.0	26.0

Motor Speed Data

	LR	Pull-Up	BD	Rated	Idle
Speed (RPM)	0	1800	3450	3575	3600
Current (Amps)	3,500	3,250	2,100	435	128
Torque (ft-lb)	1,225	950	1,900	588	0.00

Information Block

HP	400.0
Sync. RPM	3600
Frame	449
Enclosure	TEFC
Construction	TFRN
Voltage	480 V
Frequency	60 Hz
Design	A
LR Code letter	H
Service Factor	1.0
Temp Rise @ FL	88 °C
Duty	CONT
Ambient	40 °C
Elevation	1,000 feet
Rotor/Shaft wk ²	61.0 Lb-Ft ²
Ref Wdg	T449261 NONE
Sound Pressure @ 1M	82 dbA
VFD Rating	NONE
Outline Dwg	B-SS617112LN-2875
Conn. Diag	A-EE7340
Additional Specifications:	
0	
0	
EQUIV CKT (OHMS / PHASE)	
R1	R2
0.0050	0.0040
X1	X2
0.0470	0.0590
Xm	
	2.0730



Speed -Torque Curve

