

BALDOR • RELIANCE

Customer information packet

CFSWDM3614T-E

2HP, 1175RPM, 3PH, 60HZ, 184TC, 3646M, TEFC, F1

Class - None

Division - Not Applicable

Specifications

Enclosure	TEFC
Frame	184TC
Frame Material	Stainless Steel
Frequency	60.00 Hz
Haz Area Class and Group	None
Haz Area Division	Not Applicable
Motor Letter Type	Three Phase
Output @ Frequency	2.000 HP @ 60 HZ
Phase	3
Synchronous Speed @ Frequency	1200 RPM @ 60 HZ
Voltage @ Frequency	230.0 V @ 60 HZ 460.0 V @ 60 HZ
Agency Approvals	NEMA PREMIUM CSA UR
Ambient Temperature	40 °C
Auxillary Box	No Auxillary Box
Auxillary Box Lead Termination	None
Base Indicator	Rigid
Bearing Grease Type	Polyrex EM (-20F +300F)
Blower	None
Current @ Voltage	3.500 A @ 460.0 V 7.000 A @ 230.0 V
Design Code	A
Drip Cover	No Drip Cover
Duty Rating	CONT
Efficiency @ 100% Load	88.5 %
Electrically Isolated Bearing	Not Electrically Isolated
Feedback Device	NO FEEDBACK
Front Face Code	Standard
Front Shaft Indicator	None
Heater Indicator	No Heater

Part detail

Revision	L
Type	AC
Mech. spec.	36R552
Base	
Status	PRD/A
Elec. spec.	36WGS981
Layout	36LYR552
Eff. date	06-19-2023
CD Diagram	CD0005
Poles	06
Leads	9#16
Proprietary	False
Created date	08-01-2017

High Voltage Full Load Amps	3.5 a
Insulation Class	H
Inverter Code	Inverter Ready
KVA Code	M
Lifting Lugs	Standard Lifting Lugs
Locked Bearing Indicator	Locked Bearing
Motor Lead Exit	Ko Box
Motor Lead Quantity/Wire Size	9 @ 16 AWG
Motor Lead Termination	Flying Leads
Motor Standards	NEMA
Motor Type	3646M
Mounting Arrangement	F1
Number of Poles	6
Overall Length	18.89 IN
Power Factor	61
Product Family	WD All SS Encapsulated
Pulley End Bearing Type	Sealed Bearing
Pulley Face Code	C-Face
Pulley Shaft Indicator	Standard
Rodent Screen	None
RoHS Status	ROHS COMPLIANT
Service Factor	1.15
Shaft Diameter	1.125 IN
Shaft Extension Location	Pulley End
Shaft Ground Indicator	No Shaft Grounding
Shaft Rotation	Reversible
Shaft Slinger Indicator	Shaft Slinger
Speed	1175 rpm
Speed Code	Single Speed
Starting Method	Direct on line
Thermal Device - Bearing	None
Thermal Device - Winding	None
Vibration Sensor Indicator	No Vibration Sensor
Winding Thermal 1	None

Winding Thermal 2

None

Nameplate

NP4427AAA01										
CAT #	CFSWDM3614T-E			WT	101	LBS				
SPEC	36R552S981G1			ENCL	TEFC					
SER #				CC	010A	IP	69			
HP	2	MAG CUR								
VOLTS	230/460			NEMA NOM. EFF		88.5				
AMPS	7/3.5			PF	61					
RATING	40C AMB-CONT									
RPM	1175			MAX RPM						
FRAME	184TC	HZ	60	CODE	M	CLASS	H			
SER.F.	1.15	SF AMP			PH	3	DES	A		
DE	6206		ODE	6206						
LUBRICATION	POLYREX EM									
ID LOGO	INVERTER TYPE		VPWM	CHP	60	TO	90	1.5:1		
ID LOGO	WK2	0.43	CT	3	TO	60	20:1			
ID LOGO	SL HZ		VT		TO	60	1000:1			
				QR						
YR										

AC Induction Motor Performance Data

Record # 39970

Typical performance - not guaranteed values

Winding: 36WGS981-R002		Type: 3646M		Enclosure: TEFC	
Nameplate Data			460 V, 60 Hz: High Voltage Connection		
Rated Output (HP)	2	Full Load Torque	8.95 LB-FT		
Volts	230/460	Start Configuration	direct on line		
Full Load Amps	7/3.5	Breakdown Torque	37.7 LB-FT		
R.P.M.	1175	Pull-up Torque	23.3 LB-FT		
Hz	60 Phase	Locked-rotor Torque	29.7 LB-FT		
NEMA Design Code	A KVA Code	Starting Current	26 A		
Service Factor (S.F.)	1.15	No-load Current	2.38 A		
NEMA Nom. Eff.	88.5 Power Factor	Line-line Res. @ 25°C	4.4007 Ω		
Rating - Duty	40C AMB-CONT	Temp. Rise @ Rated Load	36°C		
S.F. Amps		Temp. Rise @ S.F. Load	42°C		

Load Characteristics 460 V, 60 Hz, 2 HP

% of Rated Load	25	50	75	100	125	150	S.F.
Power Factor	25	41	53	61	67	71	65
Efficiency	76.6	85.2	87.7	88.5	88.3	87.6	88.4
Speed	1194.5	1188.5	1182.4	1175.9	1168.8	1160.6	1172
Line amperes	2.47	2.71	3.04	3.46	3.95	4.52	3.75

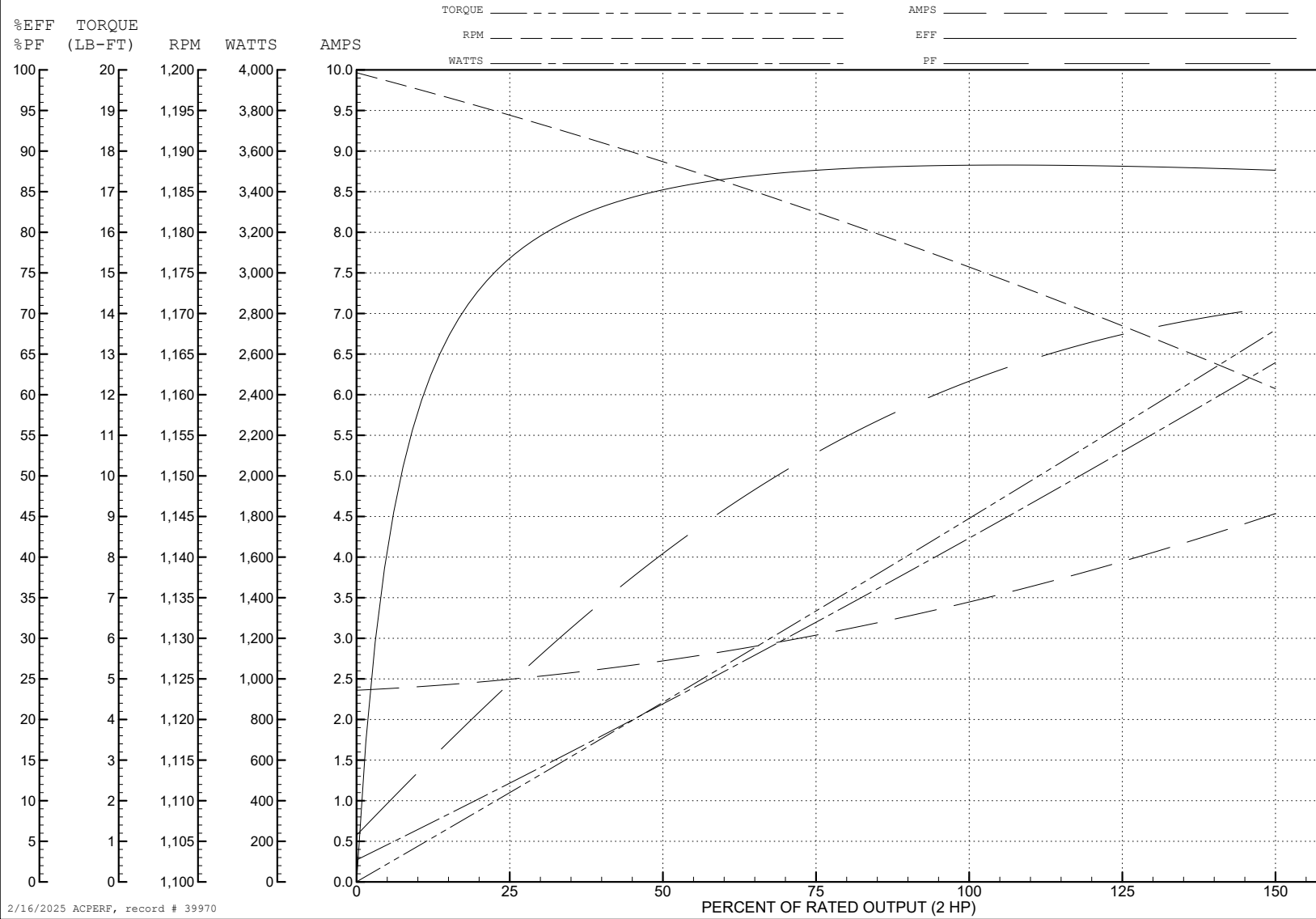
ABB Motors and Mechanical Inc.

WINDING # 36WGS981

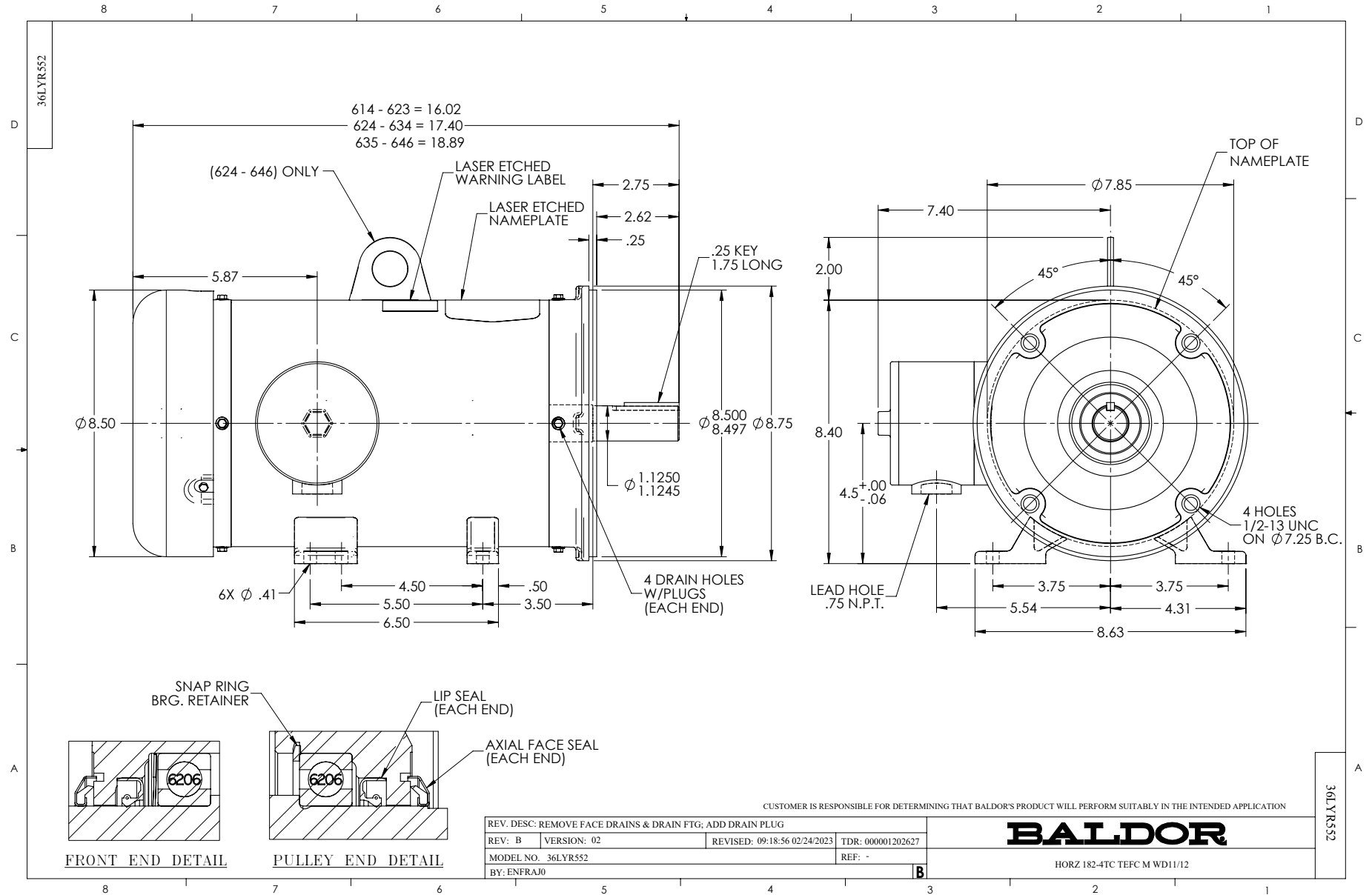
2 HP 3 PH 60 HZ 1175 RPM 460 V 3646M

Typical performance - not guaranteed values.

TORQUES (LB-FT): PO=37.7 PU=23.3 LR=29.7 LRA=26



2/16/2025 ACPERF, record # 39970



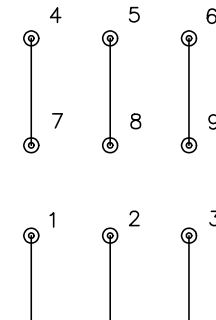
CD0005



LOW VOLTAGE
(2Y)



HIGH VOLTAGE
(1Y)



NOTES:

1. INTERCHANGE ANY TWO LINE LEADS TO REVERSE ROTATION.
2. OPTIONAL THERMOSTATS ARE PROVIDED WHEN SPECIFIED.
3. ACTUAL NUMBER OF INTERNAL PARALLEL CIRCUITS MAY BE A MULTIPLE OF THOSE SHOWN ABOVE.
4. LEAD COLORS ARE OPTIONAL. LEADS MUST ALWAYS BE NUMBERED AS SHOWN.

CD0005

REV. DESC: REVISE TO SHOW OPTIONAL COLORS			
REV. LTR: E	BY: JLP	REVISED: 01/19/99 10:15	TDR: 0171435
S00000		FILE: AAA00005140	MDL: -
		MTL: -	

BALDOR ELECTRIC Co.

3PH, DV, 9 LEADS