

BALDOR • RELIANCE

Customer information packet

CFSWDM3708T-E

5HP, 1165RPM, 3PH, 60HZ, 3756M, N

Class - None

Division - Not Applicable

Specifications

| | |
|--------------------------------|---|
| Enclosure | TEFC |
| Frame | 213TC |
| Frame Material | Stainless Steel |
| Frequency | 60.00 Hz |
| Haz Area Class and Group | None |
| Haz Area Division | Not Applicable |
| Motor Letter Type | Three Phase |
| Output @ Frequency | 5.000 HP @ 60 HZ |
| Phase | 3 |
| Synchronous Speed @ Frequency | 1200 RPM @ 60 HZ |
| Voltage @ Frequency | 230.0 V @ 60 HZ 460.0 V @ 60 HZ |
| Agency Approvals | CSA CSA EEV NEMA PREMIUM UR |
| Ambient Temperature | 40 °C |
| Auxillary Box | No Auxillary Box |
| Auxillary Box Lead Termination | None |
| Base Indicator | Rigid |
| Bearing Grease Type | Polyrex EM (-20F +300F) |
| Blower | None |
| Current @ Voltage | 7.400 A @ 460.0 V 15.500 A @ 208.0 V 14.800 A @ 230.0 V |
| Design Code | A |
| Drip Cover | No Drip Cover |
| Duty Rating | CONT |
| Efficiency @ 100% Load | 89.5 % |
| Electrically Isolated Bearing | Not Electrically Isolated |
| Feedback Device | NO FEEDBACK |
| Front Shaft Indicator | None |

Part detail

| | |
|--------------|------------|
| Revision | C |
| Type | AC |
| Mech. spec. | 37Q242 |
| Base | |
| Status | PRD/A |
| Elec. spec. | 37WGZ663 |
| Layout | 37LYQ242 |
| Eff. date | 09-22-2023 |
| CD Diagram | CD0005 |
| Poles | 06 |
| Leads | 9#14 |
| Proprietary | False |
| Created date | 01-05-2021 |

| | |
|-------------------------------|----------------------------|
| Heater Indicator | No Heater |
| High Voltage Full Load Amps | 7.4 a |
| Insulation Class | F |
| Inverter Code | Inverter Ready |
| KVA Code | R |
| Lifting Lugs | Standard Lifting Lugs |
| Locked Bearing Indicator | Locked Bearing |
| Motor Lead Quantity/Wire Size | 9 @ 14 AWG |
| Motor Lead Termination | Flying Leads |
| Motor Standards | NEMA |
| Motor Type | 3756M |
| Mounting Arrangement | F1 |
| Number of Poles | 6 |
| Overall Length | 22.12 IN |
| Power Factor | 71 |
| Product Family | WD All SD Non-Encapsulated |
| Pulley End Bearing Type | Sealed Bearing |
| Pulley Face Code | C-Face |
| Pulley Shaft Indicator | Standard |
| Rodent Screen | None |
| RoHS Status | ROHS COMPLIANT |
| Service Factor | 1.15 |
| Shaft Diameter | 1.375 IN |
| Shaft Ground Indicator | No Shaft Grounding |
| Shaft Rotation | Reversible |
| Shaft Slinger Indicator | No Slinger |
| Speed | 1165 rpm |
| Speed Code | Single Speed |
| Starting Method | Direct on line |
| Thermal Device - Bearing | None |
| Thermal Device - Winding | None |
| Vibration Sensor Indicator | No Vibration Sensor |
| Winding Thermal 1 | None |
| Winding Thermal 2 | None |

AC Induction Motor Performance Data

Record # 86054

Preliminary Data Sheet

| Winding: 37WGZ663-R001 | | Type: 3756M | Enclosure: TEFC |
|------------------------|-------------------|--|-------------------------|
| Nameplate Data | | 460 V, 60 Hz: High Voltage Connection | |
| Rated Output (HP) | 5 | Full Load Torque | 22.57 LB-FT |
| Volts | 230/460 | Start Configuration | direct on line |
| Full Load Amps | 14.8/7.4 | Breakdown Torque | 77.17 LB-FT |
| R.P.M. | 1165 | Pull-up Torque | 44.95 LB-FT |
| Hz | 60 Phase | Locked-rotor Torque | 51.14 LB-FT |
| NEMA Design Code | A KVA Code | Starting Current | 53.3 A |
| Service Factor (S.F.) | 1.15 | No-load Current | 3.95 A |
| NEMA Nom. Eff. | 89.5 Power Factor | Line-line Res. @ 25°C | 1.43 Ω |
| Rating - Duty | 40C AMB-CONT | Temp. Rise @ Rated Load | 55°C |
| S.F. Amps | | Temp. Rise @ S.F. Load | 67°C |
| | | Locked-rotor Power Factor | 21.1 |
| | | Rotor inertia | 1.39 lb-ft ² |

Load Characteristics 460 V, 60 Hz, 5 HP

| % of Rated Load | 25 | 50 | 75 | 100 | 125 | 150 | S.F. |
|-----------------|------|------|------|------|------|-------|------|
| Power Factor | 33 | 52 | 64 | 71 | 75 | 76 | 73 |
| Efficiency | 84 | 89.5 | 90.1 | 90 | 89.1 | 87.3 | 89.5 |
| Speed | 1193 | 1185 | 1176 | 1167 | 1157 | 1144 | 1161 |
| Line amperes | 4.26 | 4.99 | 6.11 | 7.38 | 8.81 | 10.57 | 8.24 |

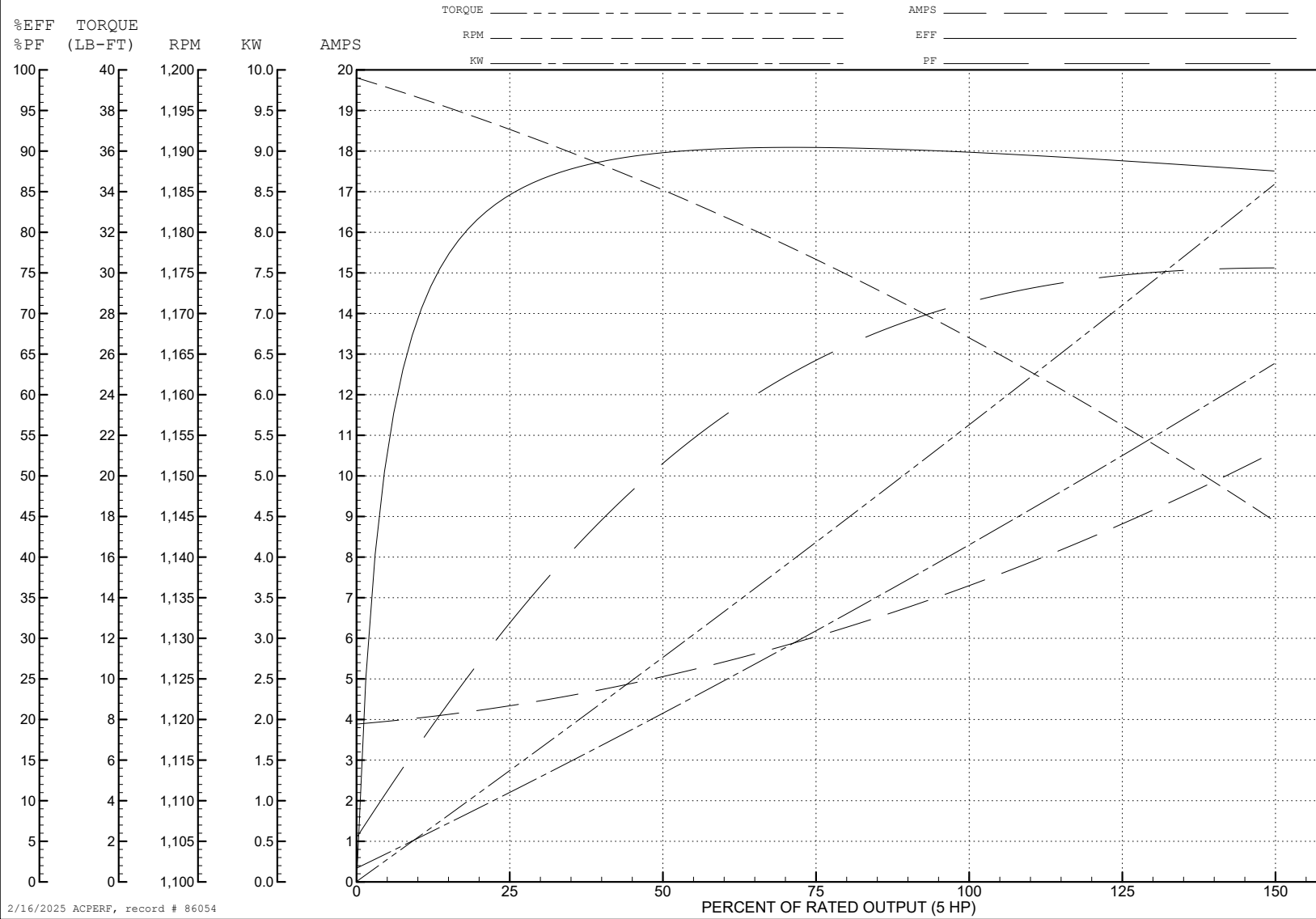
ABB Motors and Mechanical Inc.

WINDING # 37WGZ663

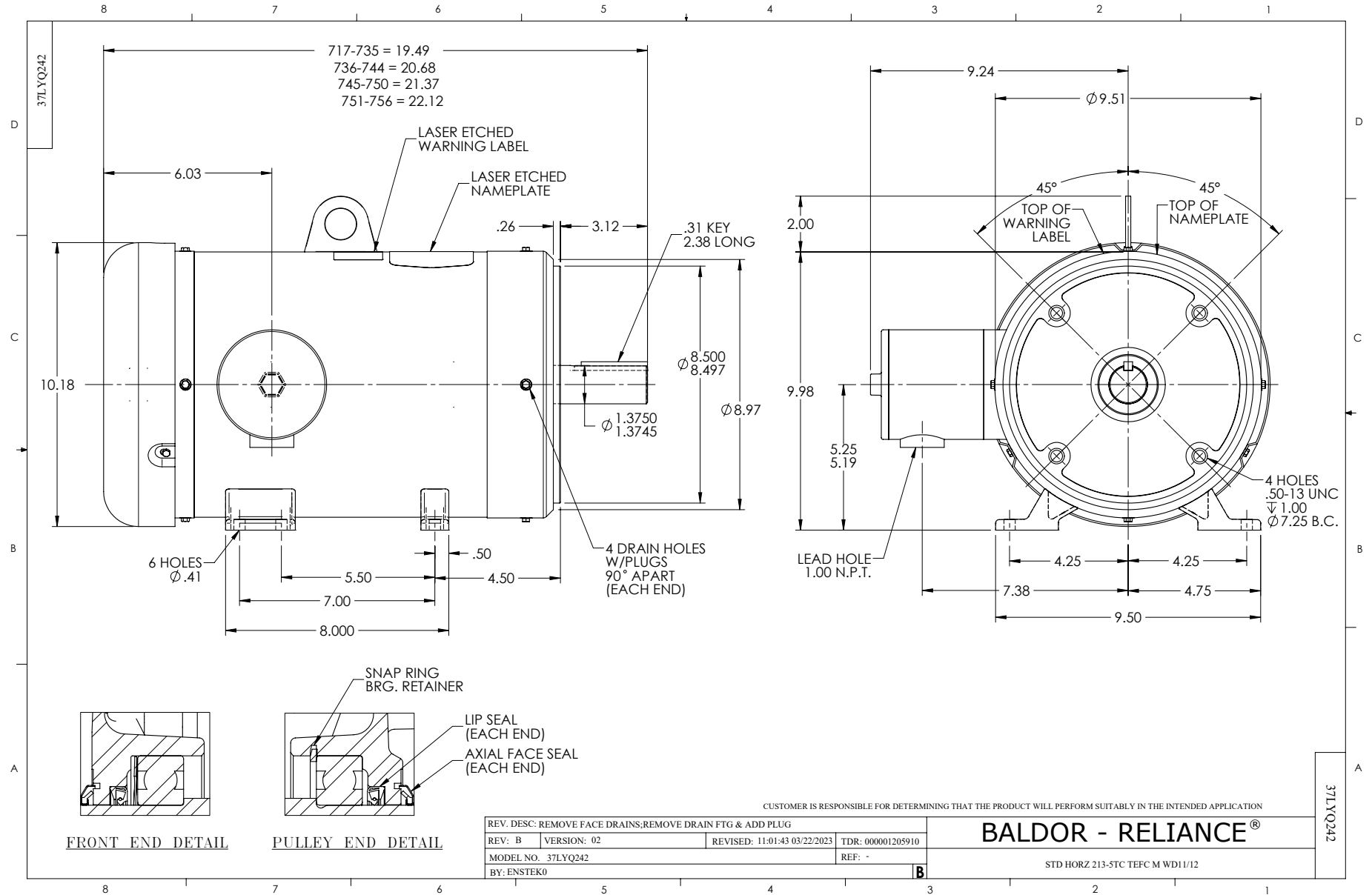
Typical performance - not guaranteed values.

5 HP 3 PH 60 HZ 1165 RPM 460 V 3756M

TORQUES (LB-FT): PO=77.17 PU=44.95 LR=51.14 LRA=53.3



2/16/2025 ACPERF, record # 86054



CD0005



LOW VOLTAGE
(2Y)



LINE

HIGH VOLTAGE
(1Y)



LINE

NOTES:

1. INTERCHANGE ANY TWO LINE LEADS TO REVERSE ROTATION.
2. OPTIONAL THERMOSTATS ARE PROVIDED WHEN SPECIFIED.
3. ACTUAL NUMBER OF INTERNAL PARALLEL CIRCUITS MAY BE A MULTIPLE OF THOSE SHOWN ABOVE.
4. LEAD COLORS ARE OPTIONAL. LEADS MUST ALWAYS BE NUMBERED AS SHOWN.

CD0005

REV. DESC: REVISE TO SHOW OPTIONAL COLORS

REV. LTR: E BY: JLP REVISED: 01/19/99 10:15 TDR: 0171435

500000

FILE: AAA00005140

MDL: -

MTL: -

BALDOR ELECTRIC Co.

3PH, DV, 9 LEADS