



Customer information packet

CFSWDM3713T-E

15HP, 3500RPM, 3PH, 60HZ, 215TC, 3756M, TEFC, F

Class - None

Division - Not Applicable

Specifications

Enclosure	TEFC
Frame	215TC
Frame Material	Stainless Steel
Frequency	60.00 Hz
Haz Area Class and Group	None
Haz Area Division	Not Applicable
Motor Letter Type	Three Phase
Output @ Frequency	15.000 HP @ 60 HZ
Phase	3
Synchronous Speed @ Frequency	3600 RPM @ 60 HZ
Voltage @ Frequency	230.0 V @ 60 HZ 460.0 V @ 60 HZ
Agency Approvals	CSA CSA EEV NEMA PREMIUM UR
Ambient Temperature	40 °C
Auxillary Box	No Auxillary Box
Auxillary Box Lead Termination	None
Base Indicator	Rigid
Bearing Grease Type	Polyrex EM (-20F +300F)
Blower	None
Current @ Voltage	37.000 A @ 208.0 V 34.000 A @ 230.0 V 17.000 A @ 460.0 V
Design Code	A
Drip Cover	No Drip Cover
Duty Rating	CONT
Efficiency @ 100% Load	91.7 %
Electrically Isolated Bearing	Not Electrically Isolated
Feedback Device	NO FEEDBACK
Front Face Code	Standard

Part detail

Revision	R
Type	AC
Mech. spec.	37Q242
Base	
Status	PRD/A
Elec. spec.	37WGR515
Layout	37LYQ242
Eff. date	11-27-2023
CD Diagram	CD0180
Poles	02
Leads	9#14
Proprietary	False
Created date	08-03-2017

Front Shaft Indicator	None
Heater Indicator	No Heater
High Voltage Full Load Amps	17.0 a
Insulation Class	H
Inverter Code	Not Inverter
KVA Code	L
Lifting Lugs	Standard Lifting Lugs
Locked Bearing Indicator	Locked Bearing
Motor Lead Exit	Ko Box
Motor Lead Quantity/Wire Size	9 @ 14 AWG
Motor Lead Termination	Flying Leads
Motor Standards	NEMA
Motor Type	3756M
Mounting Arrangement	F1
Number of Poles	2
Overall Length	22.12 IN
Power Factor	90
Product Family	WD All SS Encapsulated
Pulley End Bearing Type	Sealed Bearing
Pulley Face Code	C-Face
Pulley Shaft Indicator	Standard
Rodent Screen	None
RoHS Status	ROHS COMPLIANT
Service Factor	1.15
Shaft Diameter	1.375 IN
Shaft Extension Location	Pulley End
Shaft Ground Indicator	No Shaft Grounding
Shaft Rotation	Reversible
Shaft Slinger Indicator	No Slinger
Speed	3500 rpm
Speed Code	Single Speed
Starting Method	Direct on line
Thermal Device - Bearing	None
Thermal Device - Winding	None

Vibration Sensor Indicator	No Vibration Sensor
Winding Thermal 1	None
Winding Thermal 2	None

AC Induction Motor Performance Data

Record # 43026

Typical performance - not guaranteed values

Winding: 37WGR515-R001		Type: 3756M		Enclosure: TEFC	
Nameplate Data			460 V, 60 Hz: High Voltage Connection		
Rated Output (HP)	15		Full Load Torque	22.4 LB-FT	
Volts	230/460		Start Configuration	direct on line	
Full Load Amps	34/17		Breakdown Torque	129 LB-FT	
R.P.M.	3500		Pull-up Torque	62.1 LB-FT	
Hz	60 Phase	3	Locked-rotor Torque	81.4 LB-FT	
NEMA Design Code	A KVA Code	L	Starting Current	187 A	
Service Factor (S.F.)	1.15		No-load Current	5.43 A	
NEMA Nom. Eff.	91.7 Power Factor	90	Line-line Res. @ 25°C	0.42167 Ω	
Rating - Duty	40C AMB-CONT		Temp. Rise @ Rated Load	78°C	
S.F. Amps			Temp. Rise @ S.F. Load	96°C	
			Locked-rotor Power Factor	30	
			Rotor inertia	0.512 LB-FT ²	

Load Characteristics 460 V, 60 Hz, 15 HP

% of Rated Load	25	50	75	100	125	150	S.F.
Power Factor	59	82	87	90	92	93	91
Efficiency	88.1	92	92.4	91.9	91.1	89.9	91.4
Speed	3575.6	3551.4	3525.1	3498.7	3469.7	3437.4	3481
Line amperes	6.71	9.36	13.1	16.9	20.8	25.3	19.2

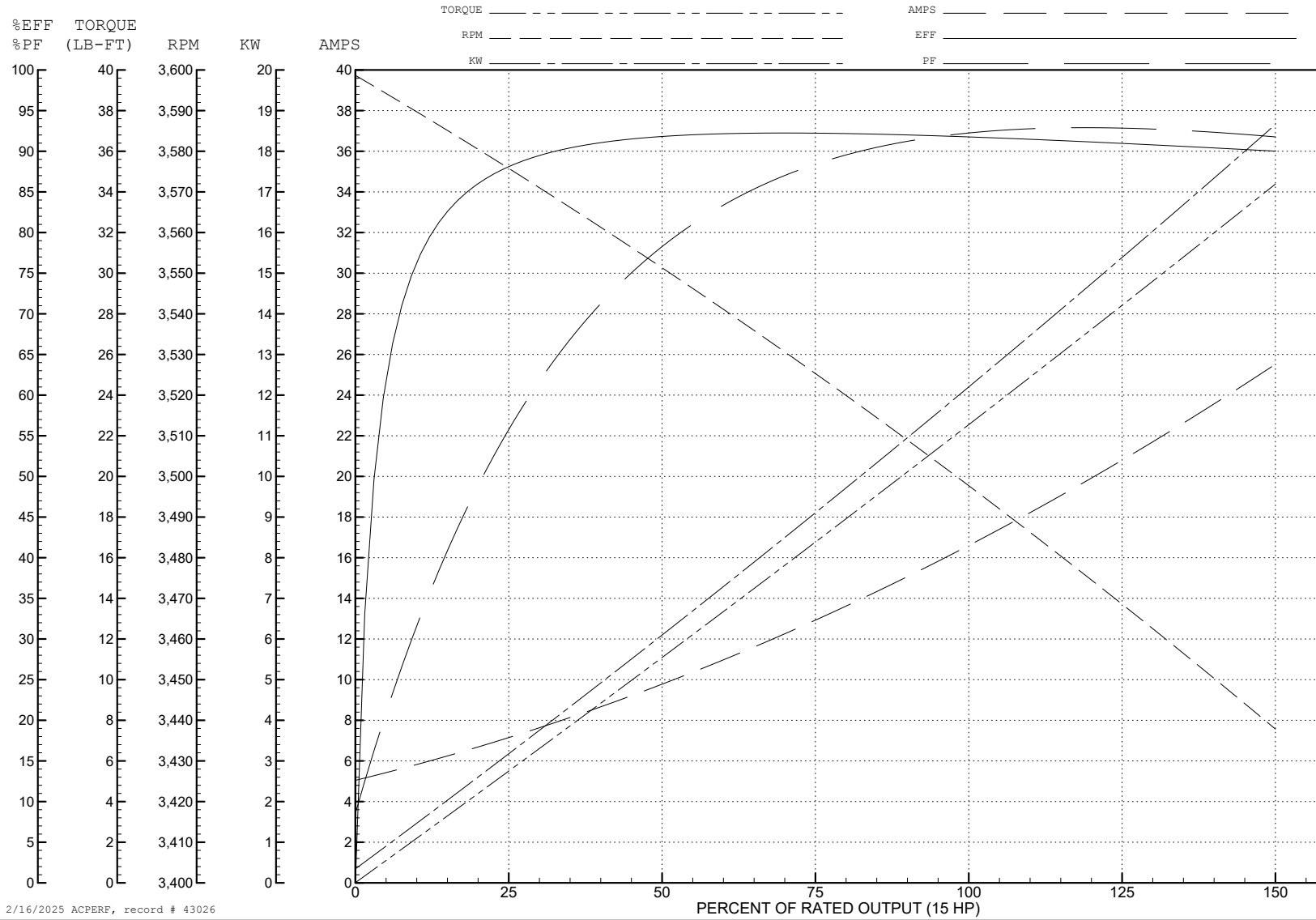
ABB Motors and Mechanical Inc.

WINDING # 37WGR515

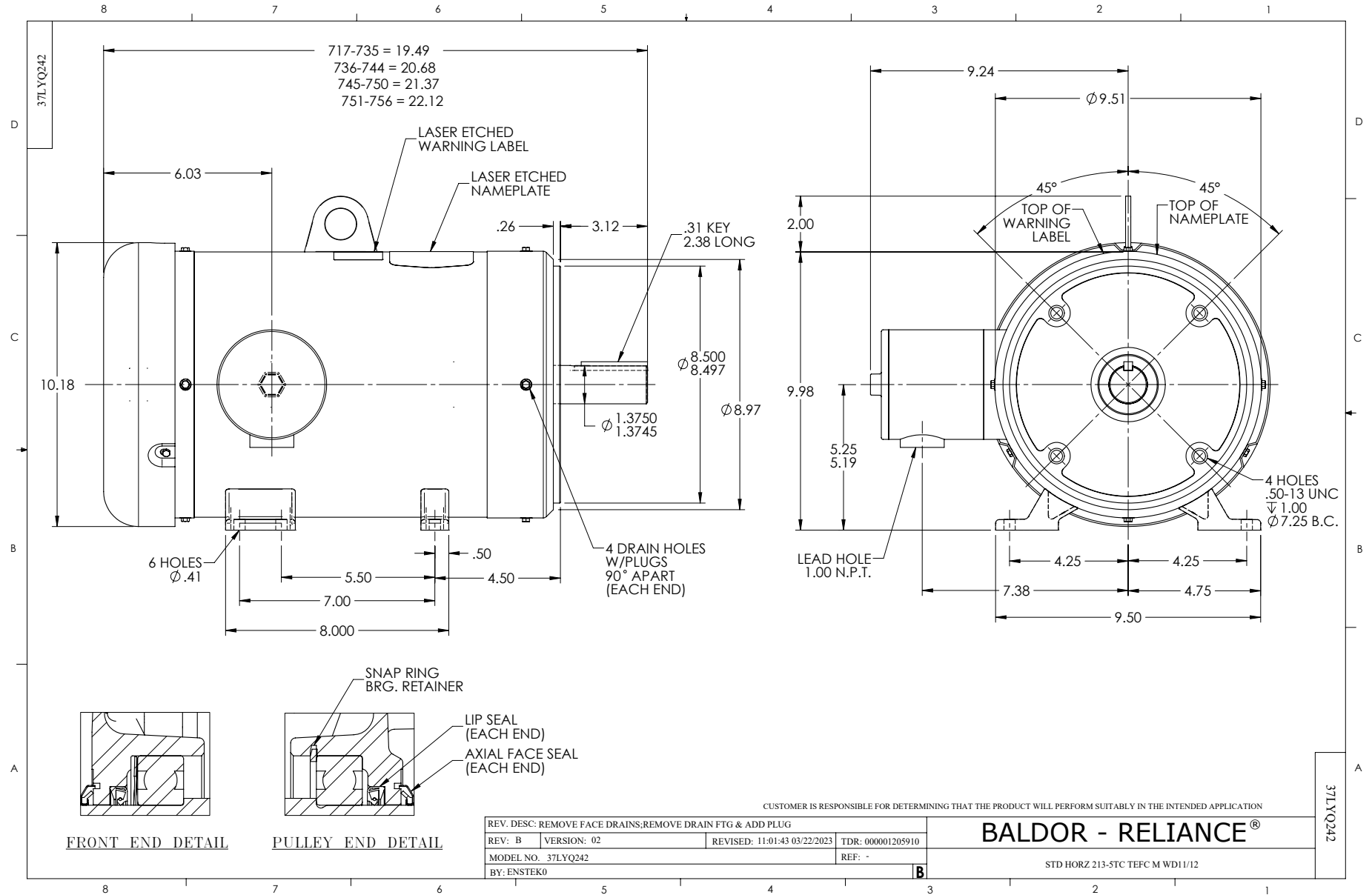
Typical performance - not guaranteed values.

15 HP 3 PH 60 HZ 3500 RPM 460 V 3756M

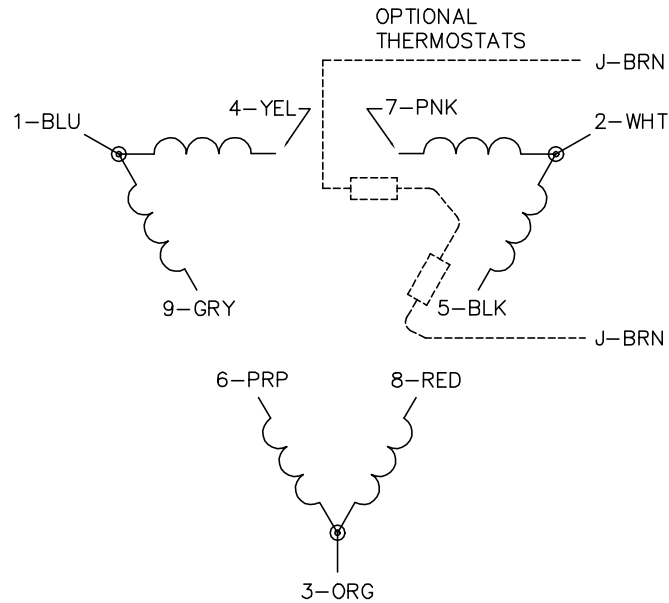
TORQUES (LB-FT): PO=129 PU=62.1 LR=81.4 LRA=187



2/16/2025 ACPERF, record # 43026



CD0180



LOW VOLTAGE
(2D)



HIGH VOLTAGE
(1D)



NOTES:

1. INTERCHANGE ANY TWO LINE LEADS TO REVERSE ROTATION.
2. OPTIONAL THERMOSTATS ARE PROVIDED WHEN SPECIFIED.
3. ACTUAL NUMBER OF INTERNAL PARALLEL CIRCUITS MAY BE A MULTIPLE OF THOSE SHOWN ABOVE.
4. LEAD COLORS ARE OPTIONAL. LEADS MUST ALWAYS BE NUMBERED AS SHOWN.

CD0180

REV. DESC: ADD CLASS CONN00000007		
REV. LTR: D	VERSION: 01	TDR: 000001099922
FILE: \AAA\00005\148	REVISED: 10: 25: 29 02/19/2019	BY: ENBRIRO
MTL: -	© □	

BALDOR - RELIANCE®

3PH, DV, 9 LEADS, DELTA CONNECTION

SH 1 of 1