



---

# Customer information packet

## CFSWDNM3558T-E

2HP, 1760RPM, 3PH, 60HZ, 145TC, 3546M, TENV, F1

Class - None

Division - Not Applicable

## Specifications

|                                |   |
|--------------------------------|---|
| Enclosure                      | TENV  |
| Frame                          | 145TC   |
| Frame Material                 | Stainless Steel   |
| Frequency                      | 60.00 Hz  |
| Haz Area Class and Group       | None  |
| Haz Area Division              | Not Applicable  |
| Motor Letter Type              | Three Phase   |
| Output @ Frequency             | 2.000 HP @ 60 HZ  |
| Phase                          | 3   |
| Synchronous Speed @ Frequency  | 1800 RPM @ 60 HZ  |
| Voltage @ Frequency            | 460.0 V @ 60 HZ<br>230.0 V @ 60 HZ                          |
| Agency Approvals               | CSA EEV<br>CURUSEEV<br>NEMA PREMIUM<br>NEMA_PREMIUM<br>WEEE |
| Ambient Temperature            | 40 °C   |
| Auxillary Box                  | No Auxillary Box  |
| Auxillary Box Lead Termination | None  |
| Base Indicator                 | Rigid   |
| Bearing Grease Type            | Polyrex EM (-20F +300F)                                     |
| Blower                         | None  |
| Current @ Voltage              | 5.600 A @ 208.0 V<br>5.300 A @ 230.0 V<br>2.650 A @ 460.0 V |
| Design Code                    | B   |
| Drip Cover                     | No Drip Cover   |
| Duty Rating                    | CONT  |
| Efficiency @ 100% Load         | 86.5 %  |
| Electrically Isolated Bearing  | Not Electrically Isolated                                   |
| Feedback Device                | NO FEEDBACK   |

## Part detail

|              |            |
|--------------|------------|
| Revision     | B          |
| Type         | AC         |
| Mech. spec.  | 35E4742    |
| Base         |            |
| Status       | PRD/A      |
| Elec. spec.  | 35WGZ811   |
| Layout       | 35LYE4742  |
| Eff. date    | 10-01-2024 |
| CD Diagram   | CD0005     |
| Poles        | 04         |
| Leads        | 9#18 Y     |
| Proprietary  | False      |
| Created date | 03-11-2022 |

|                               |                        |
|-------------------------------|------------------------|
| Front Shaft Indicator         | None                   |
| Heater Indicator              | No Heater              |
| High Voltage Full Load Amps   | 2.7 a                  |
| Insulation Class              | H                      |
| Inverter Code                 | Inverter Duty          |
| KVA Code                      | L                      |
| Lifting Lugs                  | No Lifting Lugs        |
| Locked Bearing Indicator      | Locked Bearing         |
| Max Speed                     | 2700 rpm               |
| Motor Finish                  | UNPAINTED              |
| Motor Lead Quantity/Wire Size | 9 @ 18 AWG             |
| Motor Lead Termination        | Flying Leads           |
| Motor Standards               | NEMA                   |
| Motor Type                    | 3546M                  |
| Mounting Arrangement          | F1                     |
| Number of Poles               | 4                      |
| Overall Length                | 15.09 IN               |
| Power Factor                  | 80                     |
| Product Family                | WD All SS Encapsulated |
| Pulley End Bearing Type       | Sealed Bearing         |
| Pulley Face Code              | C-Face                 |
| Pulley Shaft Indicator        | Standard               |
| Rodent Screen                 | None                   |
| Service Factor                | 1.15                   |
| Shaft Diameter                | 0.875 IN               |
| Shaft Ground Indicator        | No Shaft Grounding     |
| Shaft Rotation                | Reversible             |
| Shaft Slinger Indicator       | No Slinger             |
| Speed                         | 1760 rpm               |
| Speed Code                    | Single Speed           |
| Starting Method               | Direct on line         |
| Thermal Device - Bearing      | None                   |
| Thermal Device - Winding      | None                   |
| Vibration Sensor Indicator    | No Vibration Sensor    |

**Winding Thermal 1**

**None**

---

**Winding Thermal 2**

**None**

---

**Nameplate**

**NP4427AAA01**

|                    |                      |                      |              |             |                    |
|--------------------|----------------------|----------------------|--------------|-------------|--------------------|
| <b>CAT #</b>       | CFSWDNM3558T-E       | <b>WT</b>            | 63           | <b>LBS</b>  |                    |
| <b>SPEC</b>        | 35E4742Z811G1        | <b>ENCL</b>          | TENV         |             |                    |
| <b>SER #</b>       |                      | <b>CC</b>            | 010A         | <b>IP</b>   | 69                 |
| <b>HP</b>          | 2                    | <b>MAG CUR</b>       | 2.7/1.35     |             |                    |
| <b>VOLTS</b>       | 230/460              | <b>NEMA NOM. EFF</b> | 86.5         |             |                    |
| <b>AMPS</b>        | 5.3/2.65             | <b>PF</b>            | 80           |             |                    |
| <b>RATING</b>      | 40C AMB-CONT         |                      |              |             |                    |
| <b>RPM</b>         | 1760                 | <b>MAX RPM</b>       | 2700         |             |                    |
| <b>FRAME</b>       | 145TC                | <b>HZ</b>            | 60           | <b>CODE</b> | L CLASS H          |
| <b>SER.F.</b>      | 1.15                 | <b>SF AMP</b>        | 6/3          | <b>PH</b>   | 3 DES B            |
| <b>DE</b>          | 6205                 | <b>ODE</b>           | 6205         |             |                    |
| <b>LUBRICATION</b> | POLYREX EM           |                      |              |             |                    |
| <b>ID LOGO</b>     | <b>INVERTER TYPE</b> | <b>VPWM</b>          | <b>CHP</b>   | 60          | <b>TO</b> 90 1.5:1 |
| <b>ID LOGO</b>     | <b>WK2</b> 0.332     | <b>CT</b> 15         | <b>TO</b> 60 | 4:1         |                    |
| <b>ID LOGO</b>     | <b>SL HZ</b> 1.33    | <b>VT</b> 3          | <b>TO</b> 60 | 20:1        |                    |
|                    |                      |                      | <b>QR</b>    |             |                    |
| <b>YR</b>          |                      |                      |              |             |                    |

**AC Induction Motor Performance Data**

Record # 87105

Preliminary Data Sheet

| <b>Winding:</b> 35WZ811-R001 |                          | <b>Type:</b> 3546M               |  | <b>Enclosure:</b> TENV |  |
|------------------------------|--------------------------|----------------------------------|--|------------------------|--|
| <b>Nameplate Data</b>        |                          |                                  | <b>460 V, 60 Hz:<br/>High Voltage Connection</b> |                        |  |
| <b>Rated Output (HP)</b>     | 2                        | <b>Full Load Torque</b>          | 6 LB-FT  |                        |  |
| <b>Volts</b>                 | 230/460                  | <b>Start Configuration</b>       | direct on line                                   |                        |  |
| <b>Full Load Amps</b>        | 5.3/2.65                 | <b>Breakdown Torque</b>          | 27.78 LB-FT                                      |                        |  |
| <b>R.P.M.</b>                | 1760                     | <b>Pull-up Torque</b>            | 16.81 LB-FT                                      |                        |  |
| <b>Hz</b>                    | 60 <b>Phase</b>          | 3                                | <b>Locked-rotor Torque</b>                       | 21.79 LB-FT            |  |
| <b>NEMA Design Code</b>      | <b>B KVA Code</b>        | L                                | <b>Starting Current</b>                          | 25.07 A                |  |
| <b>Service Factor (S.F.)</b> | 1.15                     | <b>No-load Current</b>           | 1.36 A   |                        |  |
| <b>NEMA Nom. Eff.</b>        | 86.5 <b>Power Factor</b> | 80                               | <b>Line-line Res. @ 25°C</b>                     | 7.86 Ω                 |  |
| <b>Rating - Duty</b>         | 40C AMB-CONT             | <b>Temp. Rise @ Rated Load</b>   | 100°C  |                        |  |
| <b>S.F. Amps</b>             | 6/3                      | <b>Temp. Rise @ S.F. Load</b>    | 122°C  |                        |  |
|                              |                          | <b>Locked-rotor Power Factor</b> | 51.7   |                        |  |
|                              |                          | <b>Rotor inertia</b>             | 0.332 lb-ft <sup>2</sup>                         |                        |  |

**Load Characteristics 460 V, 60 Hz, 2 HP**

| <b>% of Rated Load</b> | <b>25</b> | <b>50</b> | <b>75</b> | <b>100</b> | <b>125</b> | <b>150</b> | <b>S.F.</b> |
|------------------------|-----------|-----------|-----------|------------|------------|------------|-------------|
| <b>Power Factor</b>    | 39        | 61        | 73        | 80         | 85         | 87         | 83          |
| <b>Efficiency</b>      | 83.3      | 88.6      | 89.2      | 88.7       | 87.5       | 86         | 88          |
| <b>Speed</b>           | 1790      | 1781      | 1771      | 1760       | 1748       | 1735       | 1753        |
| <b>Line amperes</b>    | 1.5       | 1.78      | 2.17      | 2.65       | 3.18       | 3.77       | 2.97        |

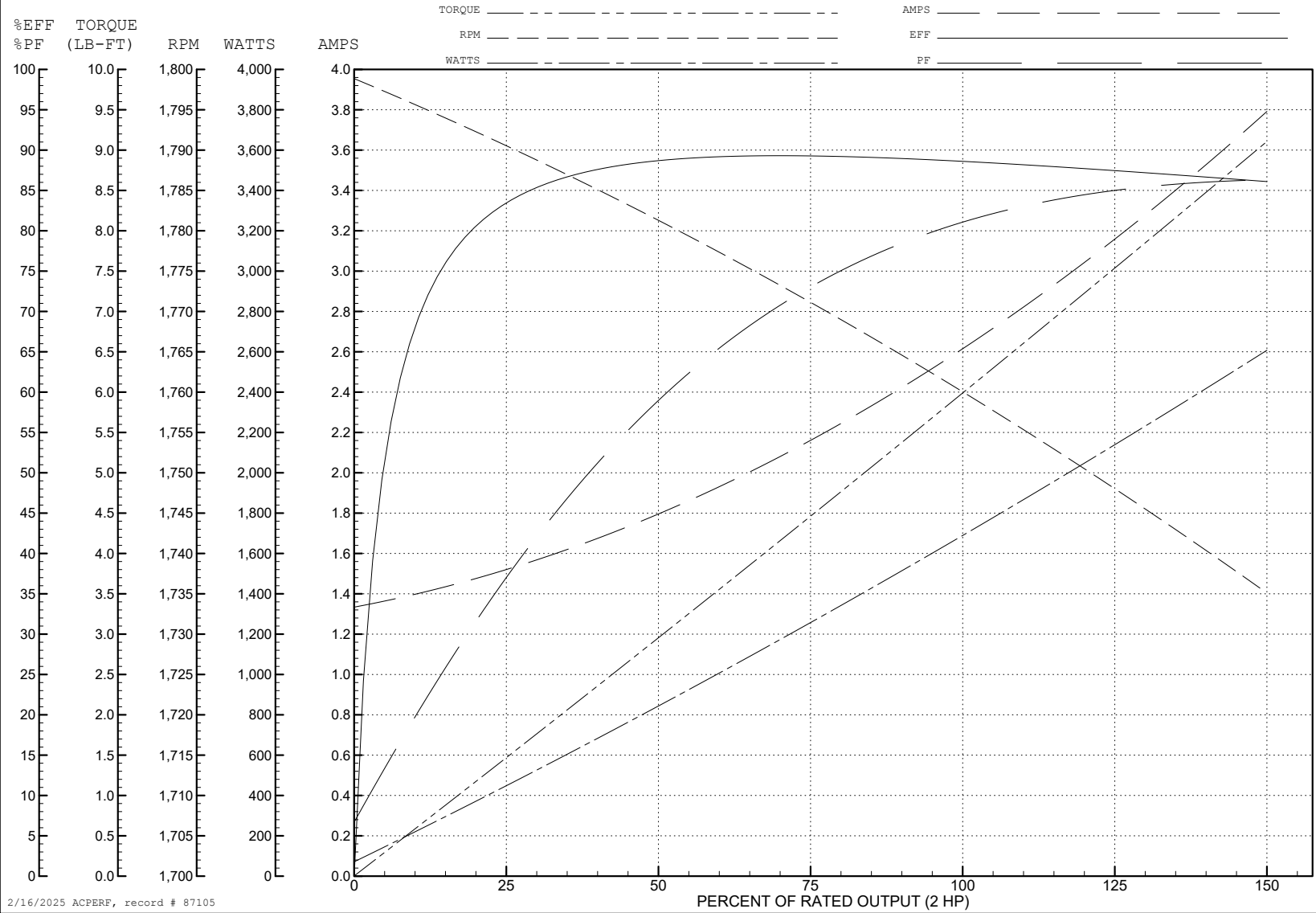
ABB Motors and Mechanical Inc.

WINDING # 35WGZ811

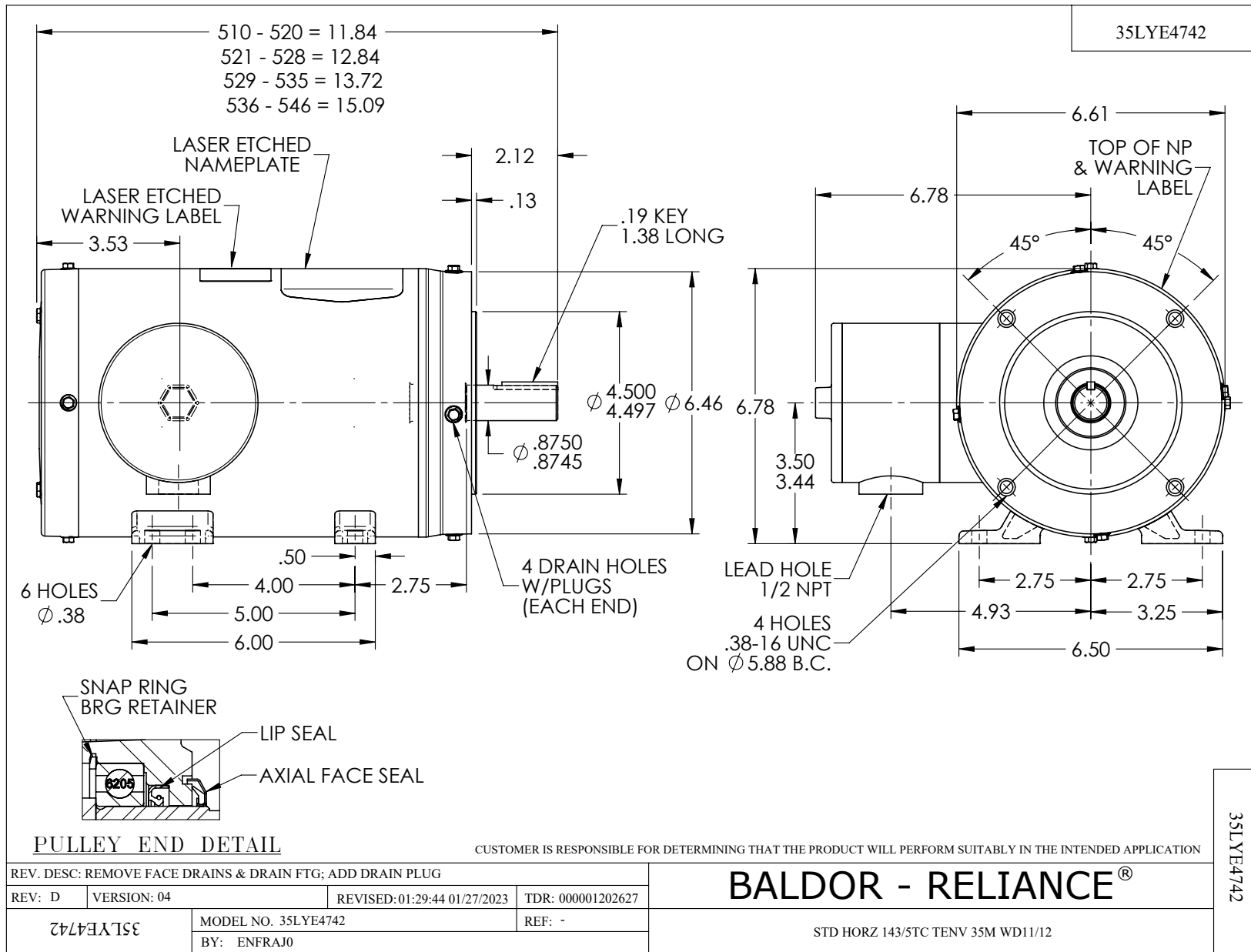
Typical performance - not guaranteed values.

2 HP 3 PH 60 HZ 1760 RPM 460 V 3546M

TORQUES (LB-FT): PO=27.78 PU=16.81 LR=21.79 LRA=25.07



2/16/2025 ACPERF, record # 87105



CD0005



LOW VOLTAGE  
(2Y)



LINE

HIGH VOLTAGE  
(1Y)



LINE

NOTES:

1. INTERCHANGE ANY TWO LINE LEADS TO REVERSE ROTATION.
2. OPTIONAL THERMOSTATS ARE PROVIDED WHEN SPECIFIED.
3. ACTUAL NUMBER OF INTERNAL PARALLEL CIRCUITS MAY BE A MULTIPLE OF THOSE SHOWN ABOVE.
4. LEAD COLORS ARE OPTIONAL. LEADS MUST ALWAYS BE NUMBERED AS SHOWN.

CD0005

|   |         |                         |              |
|---|---------|-------------------------|--------------|
| REV. DESC: REVISE TO SHOW OPTIONAL COLORS |         |                         |              |
| REV. LTR: E                               | BY: JLP | REVISED: 01/19/99 10:15 | TDR: 0171435 |
| S00000                                    |         | FILE: AAA00005140       | MDL: -       |
|   |         | MTL: -                  |              |

**BALDOR ELECTRIC Co.**

3PH, DV, 9 LEADS