



---

# Customer information packet

## ECR9054T

5HP, 1760RPM, 3PH, 60HZ, 184T, 0642M, TEFC, F1

Class - None

Division - Not Applicable

## Specifications

Enclosure	TEFC
Frame	184T
Frame Material	Iron
Frequency	60.00 Hz
Haz Area Class and Group	None
Haz Area Division	Not Applicable
Motor Letter Type	Three Phase
Output @ Frequency	5.000 HP @ 60 HZ
Phase	3
Synchronous Speed @ Frequency	1800 RPM @ 60 HZ
Voltage @ Frequency	460.0 V @ 60 HZ 230.0 V @ 60 HZ
Agency Approvals	CCSA US CSA EEV NEMA PREMIUM UR
Ambient Temperature	40 °C
Auxillary Box	No Auxillary Box
Auxillary Box Lead Termination	None
Base Indicator	Rigid
Bearing Grease Type	Polyrex EM (-20F +300F)
Blower	None
Constant Torque Speed Range	6
Current @ Voltage	7.200 A @ 460.0 V 14.400 A @ 230.0 V 14.400 A @ 208.0 V
Design Code	A
Drip Cover	No Drip Cover
Duty Rating	CONT
Efficiency @ 100% Load	89.5 %
Electrically Isolated Bearing	Not Electrically Isolated
Enclosure Modification	Severe Duty Features

## Part detail

Revision	A
Type	AC
Mech. spec.	06K520
Base	
Status	PRD/A
Elec. spec.	06WGX899
Layout	06LYK520
Eff. date	07-12-2023
CD Diagram	CD0005
Poles	04
Leads	9#16
Proprietary	False
Created date	03-28-2023

<b>Feedback Device</b>	NO FEEDBACK
<b>Front Shaft Indicator</b>	None
<b>Heater Indicator</b>	No Heater
<b>High Voltage Full Load Amps</b>	7.2 a
<b>Insulation Class</b>	F
<b>Inverter Code</b>	Inverter Duty
<b>KVA Code</b>	L
<b>Lifting Lugs</b>	Standard Lifting Lugs
<b>Locked Bearing Indicator</b>	No Locked Bearing
<b>Max Speed</b>	2700 rpm
<b>Motor Lead Quantity/Wire Size</b>	9 @ 16 AWG
<b>Motor Lead Termination</b>	Flying Leads
<b>Motor Standards</b>	NEMA
<b>Motor Type</b>	0642M
<b>Mounting Arrangement</b>	F1
<b>Number of Poles</b>	4
<b>Overall Length</b>	15.93 IN
<b>Power Factor</b>	73
<b>Product Family</b>	Super-E Chemical Processing
<b>Pulley End Bearing Type</b>	Ball
<b>Pulley Face Code</b>	Standard
<b>Pulley Shaft Indicator</b>	Standard
<b>Rodent Screen</b>	None
<b>Service Factor</b>	1.25
<b>Shaft Diameter</b>	1.125 IN
<b>Shaft Ground Indicator</b>	No Shaft Grounding
<b>Shaft Rotation</b>	Reversible
<b>Shaft Slinger Indicator</b>	Shaft Slinger
<b>Speed</b>	1760 rpm
<b>Speed Code</b>	Single Speed
<b>Starting Method</b>	Direct on line
<b>Thermal Device - Bearing</b>	None
<b>Thermal Device - Winding</b>	None
<b>Vibration Sensor Indicator</b>	No Vibration Sensor

Winding Thermal 1	None
Winding Thermal 2	None

---

**Nameplate**

**NP3294**

<b>CAT NO</b>	ECR9054T				
<b>SPEC.</b>	06K520X899G1	<b>ENCL</b>	TEFC		
<b>FRAME</b>	184T	<b>HP</b>	5		
<b>VOLTS</b>	230/460				
<b>FLA</b>	13.8/6.9	<b>I.P.</b>	55		
<b>RPM</b>	1760	<b>RPM MAX</b>	2700		
<b>HZ</b>	60	<b>PH</b>	3	<b>CLASS</b>	F
<b>SER.F.</b>	1.25	<b>DES</b>	A	<b>CC</b>	010A
<b>NEMA-NOM-EFF</b>	89.5				
<b>RATING</b>	40C AMB-CONT				
<b>DE BRG</b>	6306	<b>ODE BRG</b>	6206		
<b>GREASE</b>	POLYREX EM				
<b>INV.TYPE</b>	PWM	<b>C HP FR</b>	60	<b>C HP TO</b>	90
<b>CT HZ FROM</b>	6	<b>CT HZ TO</b>	60	<b>VT HZ FROM</b>	6
				<b>VT HZ TO</b>	60
<b>SER.NO</b>	SFA 17.6/8.8				

**AC Induction Motor Performance Data**

Record # 100278

Typical performance - not guaranteed values

Winding: 06WGX899-R001		Type: 0642M		Enclosure: TEFC	
<b>Nameplate Data</b>			<b>460 V, 60 Hz: High Voltage Connection</b>		
Rated Output (HP)	5	Full Load Torque	15.1 LB-FT		
Volts	230/460	Start Configuration	direct on line		
Full Load Amps	14.4/7.2	Breakdown Torque	58.8 LB-FT		
R.P.M.	1760	Pull-up Torque	32.2 LB-FT		
Hz	60 Phase	Locked-rotor Torque	38.3 LB-FT		
NEMA Design Code	A KVA Code	Starting Current	56.2 A		
Service Factor (S.F.)	1.25	No-load Current	3.84 A		
NEMA Nom. Eff.	89.5 Power Factor	Line-line Res. @ 25°C	2.1019 Ω		
Rating - Duty	40C AMB-CONT	Temp. Rise @ Rated Load	55°C		
S.F. Amps	17.6/8.8	Temp. Rise @ S.F. Load	75°C		
		Locked-rotor Power Factor	41.5		

**Load Characteristics 460 V, 60 Hz, 5 HP**

% of Rated Load	25	50	75	100	125	150	S.F.
Power Factor	35	56	68	76	80	82	80
Efficiency	83.3	88.9	90.1	90	89.2	88	89.2
Speed	1789.3	1779.8	1769.7	1758.7	1747.4	1734.3	1747
Line amperes	4.11	4.79	5.77	6.94	8.25	9.73	8.25

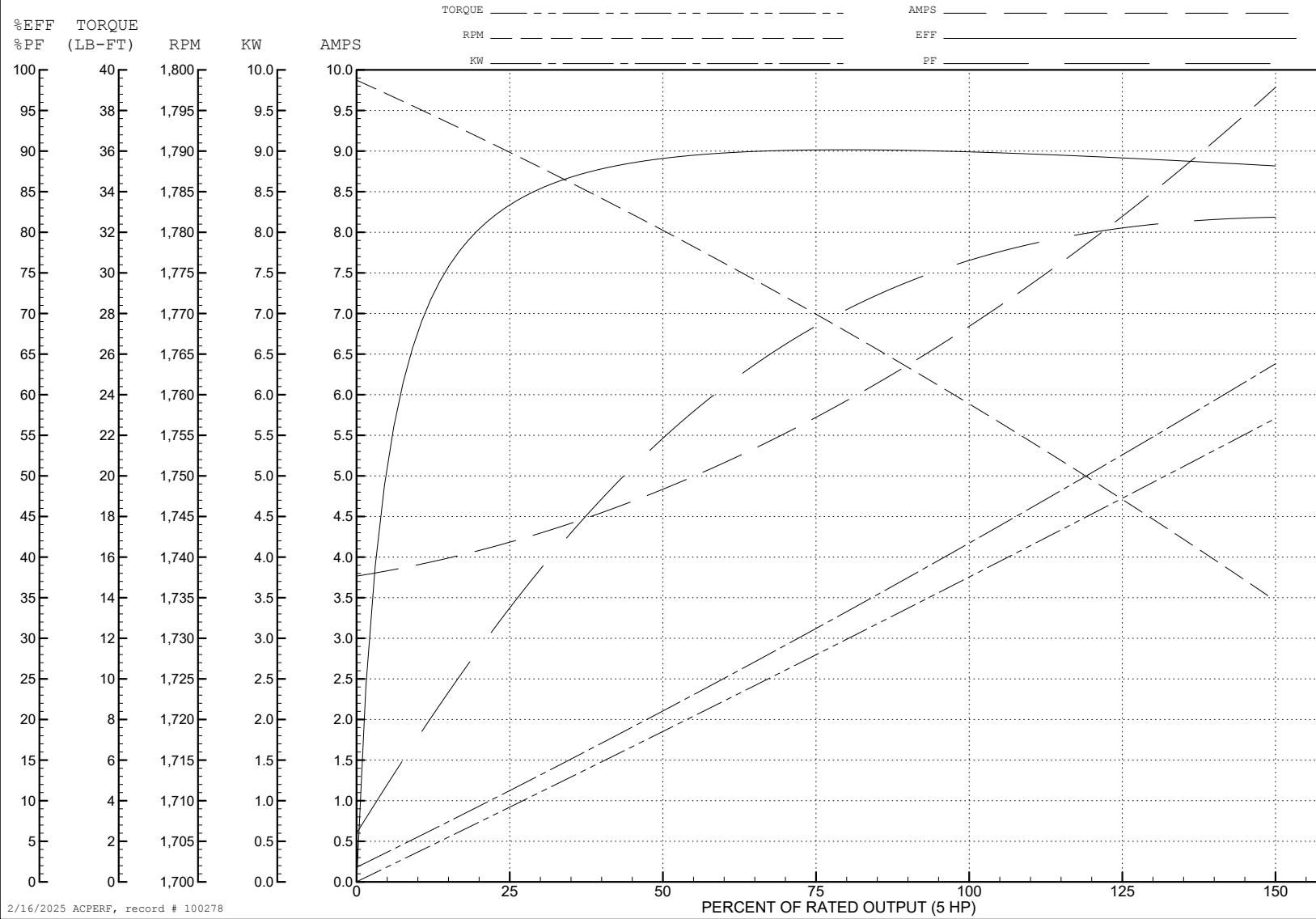
ABB Motors and Mechanical Inc.

WINDING # 06WGX899

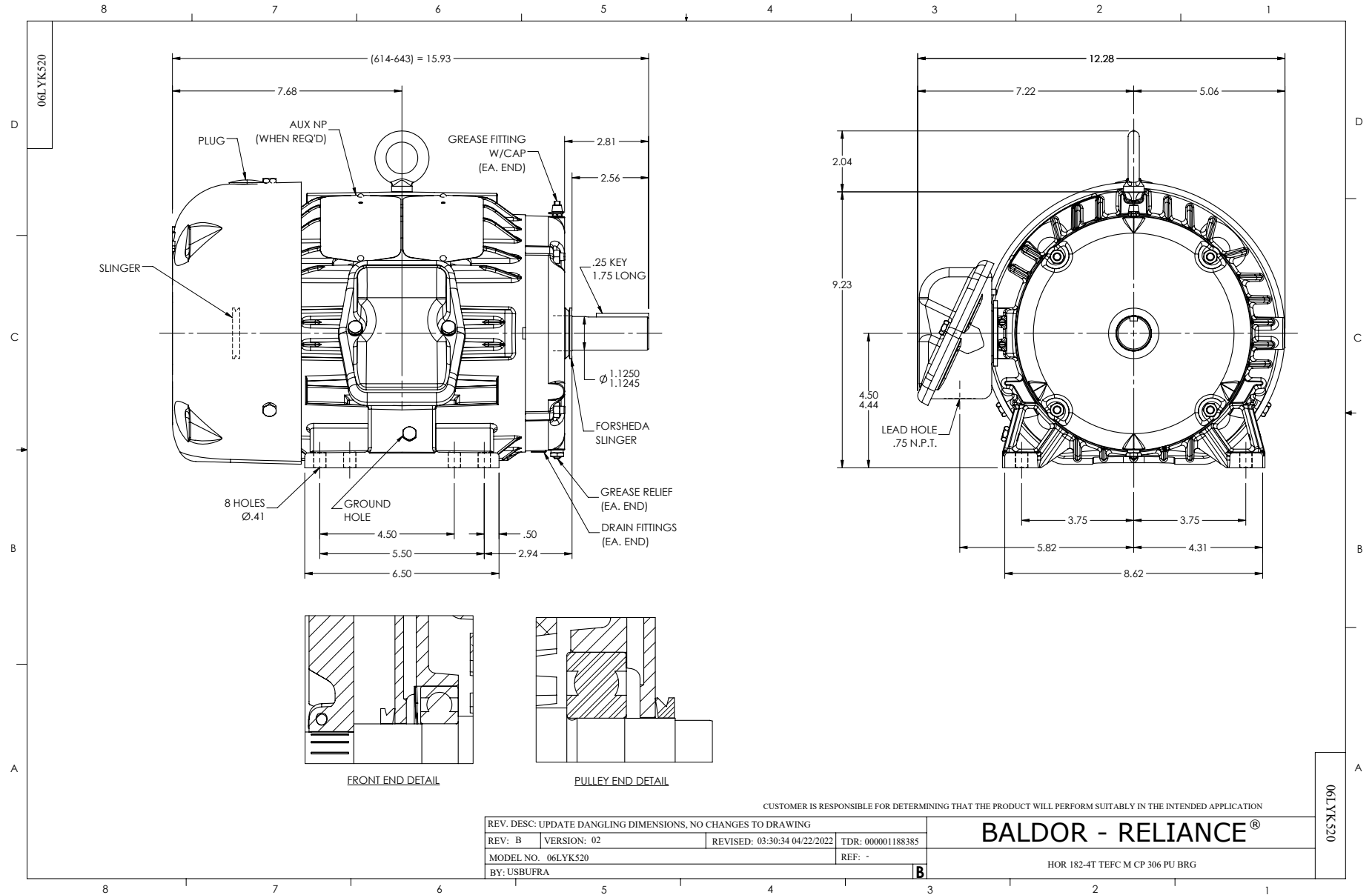
5 HP 3 PH 60 HZ 1760 RPM 460 V 0642M

Typical performance - not guaranteed values.

TORQUES (LB-FT): PO=58.8 PU=32.2 LR=38.3 LRA=56.2



2/16/2025 ACPERF, record # 100278



CD0005



LOW VOLTAGE  
(2Y)



LINE

HIGH VOLTAGE  
(1Y)



LINE

NOTES:

1. INTERCHANGE ANY TWO LINE LEADS TO REVERSE ROTATION.
2. OPTIONAL THERMOSTATS ARE PROVIDED WHEN SPECIFIED.
3. ACTUAL NUMBER OF INTERNAL PARALLEL CIRCUITS MAY BE A MULTIPLE OF THOSE SHOWN ABOVE.
4. LEAD COLORS ARE OPTIONAL. LEADS MUST ALWAYS BE NUMBERED AS SHOWN.

CD0005

REV. DESC: REVISE TO SHOW OPTIONAL COLORS			
REV. LTR: E	BY: JLP	REVISED: 01/19/99 10:15	TDR: 0171435
S00000		FILE: AAA00005140	MDL: -
		MTL: -	

**BALDOR ELECTRIC Co.**

3PH, DV, 9 LEADS