

BALDOR® • RELIANCE®

Customer information packet

ECR9406TR

40HP, 1185RPM, 3PH, 60HZ, 365T, A3668M, TEFC, F

Class - None

Division - Not Applicable

Specifications

Enclosure	TEFC
Frame	365T
Frame Material	Iron
Frequency	60.00 Hz
Haz Area Class and Group	None
Haz Area Division	Not Applicable
Motor Letter Type	Three Phase
Output @ Frequency	40.000 HP @ 60 HZ
Phase	3
Synchronous Speed @ Frequency	1200 RPM @ 60 HZ
Voltage @ Frequency	230.0 V @ 60 HZ 460.0 V @ 60 HZ
Agency Approvals	CCSAUSEEV NEMA PREMIUM NEMA_PREMIUM UR
Ambient Temperature	40 °C
Auxillary Box	No Auxillary Box
Base Indicator	Rigid
Bearing Grease Type	Mobil SHC 220 (Athens Only)
Constant Torque Speed Range	6-60
Current @ Voltage	98.200 A @ 230.0 V 49.100 A @ 460.0 V
Design Code	A
Drip Cover	No Drip Cover
Duty Rating	CONT
Efficiency @ 100% Load	94.1 %
Feedback Device	NO FEEDBACK
Heater Indicator	No Heater
High Voltage Full Load Amps	49.1 a
Insulation Class	F
Inverter Code	Inverter Ready

Part detail

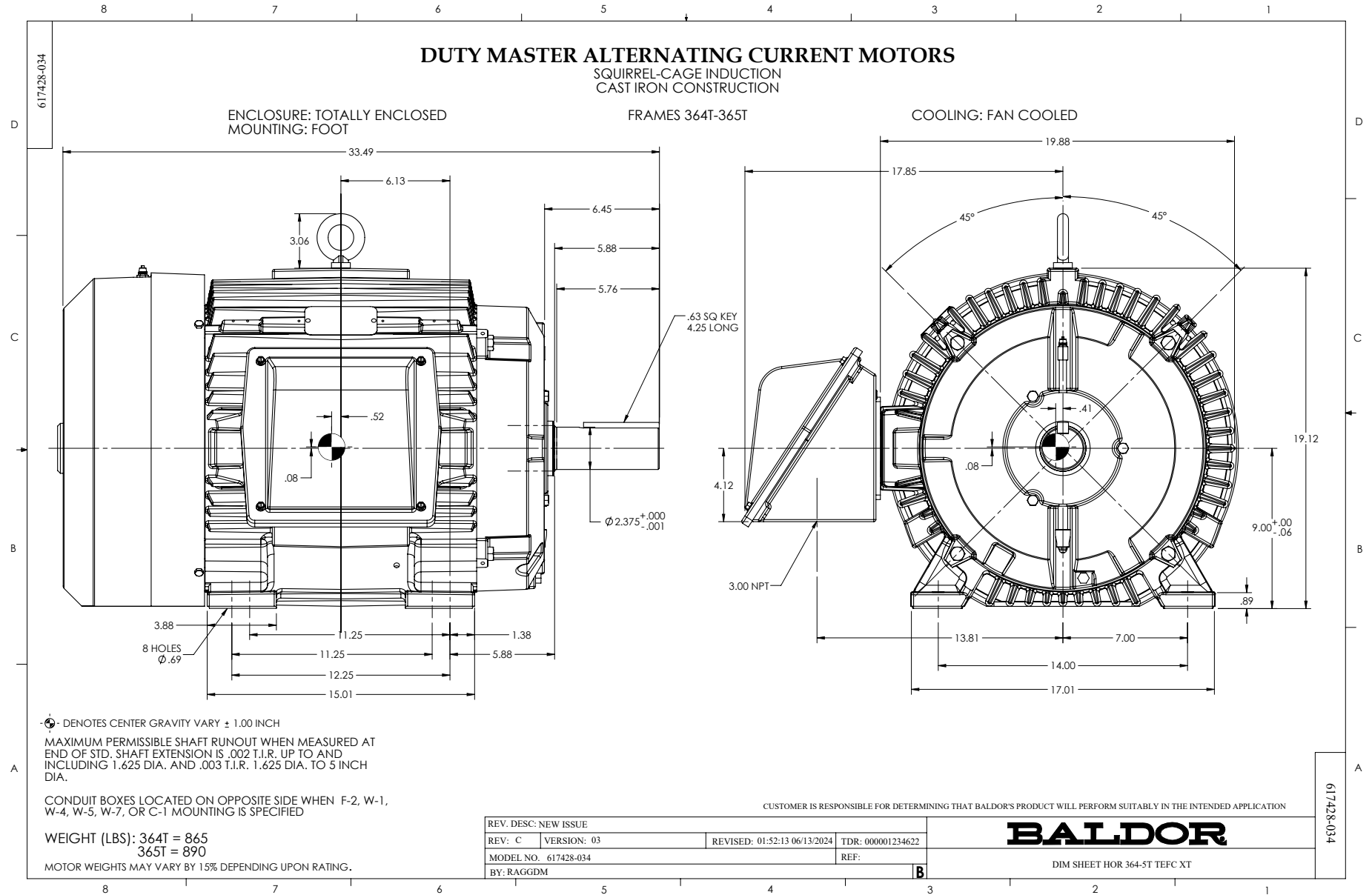
Revision	Q
Type	AC
Mech. spec.	
Base	
Status	PRD/A
Elec. spec.	A36WG3909
Layout	617428-034
Eff. date	07-08-2024
CD Diagram	416820-002
Poles	06
Leads	9#4
Proprietary	False
Created date	02-03-2015

KVA Code	G
Lifting Lugs	No Lifting Lugs
Max Speed	1800 rpm
Motor Lead Quantity/Wire Size	9 @ 4 AWG
Motor Standards	NEMA
Motor Type	A3668M
Mounting Arrangement	F1
Number of Poles	6
Overall Length	33.49 IN
Power Factor	81
Product Family	Crusher / Chipper
Pulley End Bearing Type	Roller
Pulley Face Code	Standard
Service Factor	1.25
Shaft Diameter	2.374 IN
Shaft Ground Indicator	No Shaft Grounding
Shaft Rotation	Reversible
Shaft Slinger Indicator	No Slinger
Speed	1185 rpm
Speed Code	Single Speed
Starting Method	Direct on line
Thermal Device - Bearing	None
Thermal Device - Winding	None

Nameplate

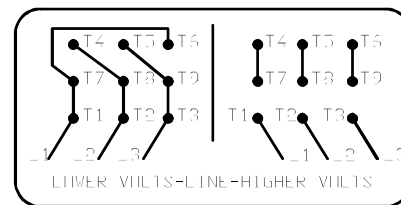
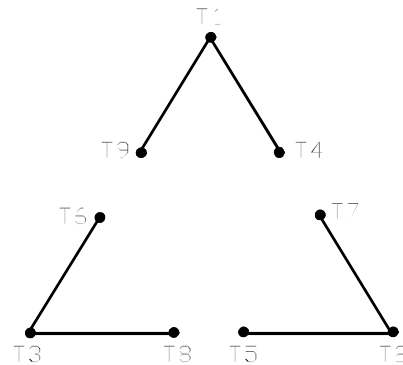
NP3980LUA

CAT #	ECR9406TR		SER			CC	010A							
SPEC	P36G3500		RATING	40C AMB-CONT										
HZ	VOLTS		AMPS		RPM	HP	CODE	SF	DES	PF	NEMA NOM. EFF			
60	230/460		98.2/49.1		1185	40	G	1.25	A	81 %	94.1	%		
	-									%		%		
PH	3	CL	F	MAX CORR KVAR	24.4									
BRG	DE	NU313	ODE	6313	ENCL	TEFC	FR	365T	55					
GREASE	MOBIL SHC 220				MTR WT	912	LBS							
USABLE AT	50HZ 30HP 190/380V 90/45A					SF1.0								
INV READY	1.0	SF VPWM	CT	10-60	HZ	6:1	VT	0-60	HZ	1000:1	CHP	60-90	HZ	1.5:1
MAX RPM	1800	SFA		120/60										



416820-002

A-C MOTOR
 CONNECTION DIAGRAM
 STANDARD 9 LEAD DELTA-CONNECTED



(N.P. 1575-B)

416820-002

REV. DESC: FONT CHANGE FOR PDF SEARCHABLE		
REV. LTR: A	VERSION: 01	TDR: 000001009382
FILE: \MGA\00000\661	REVISED: 02:46:19 02/13/2020	BY: MGHMTT
MTL: -	© □	

BALDOR - RELIANCE®

CONN DIAG - STANDARD 9 LEAD, DELTA-CONNECTED

SH 1 of 1