

BALDOR • RELIANCE

Customer information packet

EM44302TS-2340

300HP, 3575RPM, 3PH, 60HZ, L449TS, A44160M, TE

Class - None

Division - Not Applicable

Specifications

Enclosure	TEFC
Frame	L449TS
Frame Material	Iron
Frequency	60.00 Hz
Haz Area Class and Group	None
Haz Area Division	Not Applicable
Motor Letter Type	Three Phase
Output @ Frequency	300.000 HP @ 60 HZ
Phase	3
Synchronous Speed @ Frequency	3600 RPM @ 60 HZ
Voltage @ Frequency	2300.0 V @ 60 HZ 4000.0 V @ 60 HZ
Agency Approvals	CSA EEV CCSA US
Ambient Temperature	40 °C
Auxillary Box	Auxillary Box
Base Indicator	Rigid
Bearing Grease Type	Polyrex EM (-20F +300F)
Current @ Voltage	38.700 A @ 4000.0 V 67.400 A @ 2300.0 V
Design Code	-
Drip Cover	No Drip Cover
Duty Rating	CONT
Efficiency @ 100% Load	95.0 %
Feedback Device	NO FEEDBACK
Frame Prefix	L
Heater Indicator	Heater Included, 120 V
High Voltage Full Load Amps	38.7 a
Insulation Class	F
Inverter Code	Not Inverter
IP Rating	NONE
KVA Code	G

Part detail

Revision	Q
Type	AC
Mech. spec.	
Base	
Status	PRD/A
Elec. spec.	A44WG4999
Layout	617423-166
Eff. date	05-06-2024
CD Diagram	416820-004
Poles	02
Leads	6#6 4824-6-P
Proprietary	False
Created date	10-11-2013

Lifting Lugs	Standard Lifting Lugs
Motor Lead Quantity/Wire Size	6 @ 6 AWG
Motor Standards	NEMA
Motor Type	A44160M
Mounting Arrangement	F1
Number of Poles	2
Overall Length	56.48 IN
Power Factor	87
Pulley End Bearing Type	Ball
Pulley Face Code	Standard
Service Factor	1.15
Shaft Diameter	2.375 IN
Shaft Ground Indicator	No Shaft Grounding
Shaft Rotation	Reversible
Shaft Slinger Indicator	Shaft Slinger
Speed	3575 rpm
Speed Code	Single Speed
Starting Method	Direct on line
Thermal Device - Bearing	None
Thermal Device - Winding	RTD Only

Nameplate

NP3132L

SPEC NO.	P44G5951	CAT.NO.	EM44302TS-2340				FRAME	L449TS	
HP	300	VOLTS	2300/4000	PHASE	3	DESIGN	-	TYPE	P
RPM	3575	AMPS	67.4/38.7	HZ	60	AMB	40	SF	1.15
DRIVE END BEARING	65BC03J30X	DUTY	CONT	INSUL.CLASS	F				
OPP D.E. BEARING	6313/C3VL0241	ENCL	TEFC	CODE	G				
NEMA NOM/CSA QUOTED EFF	NEMA-NOM-EFFICIENCY		95						
SER.NO.									
				MOTOR WEIGHT					

000901002AAA

EQUIPPED WITH 120V/245W AND 24

120V HTR= 1H1,1H2

0V/245W SPACE HEATERS

240V HTR= 2H1,2H2

NP2496L

MOBIL POLYREX EM

617423-166

DUTY MASTER ALTERNATING CURRENT MOTORS

SQUIRREL-CAGE INDUCTION

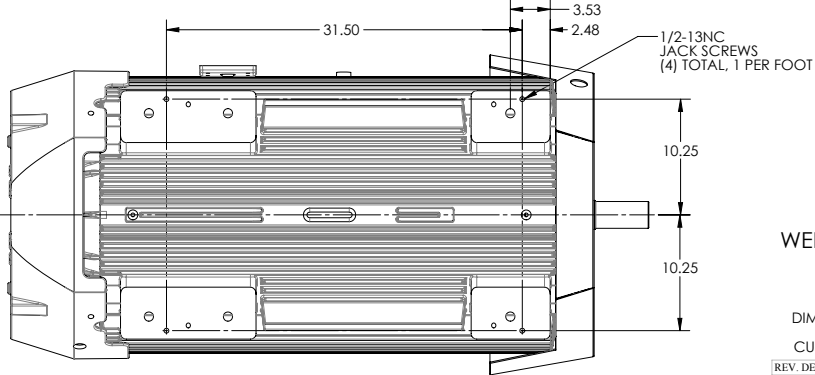
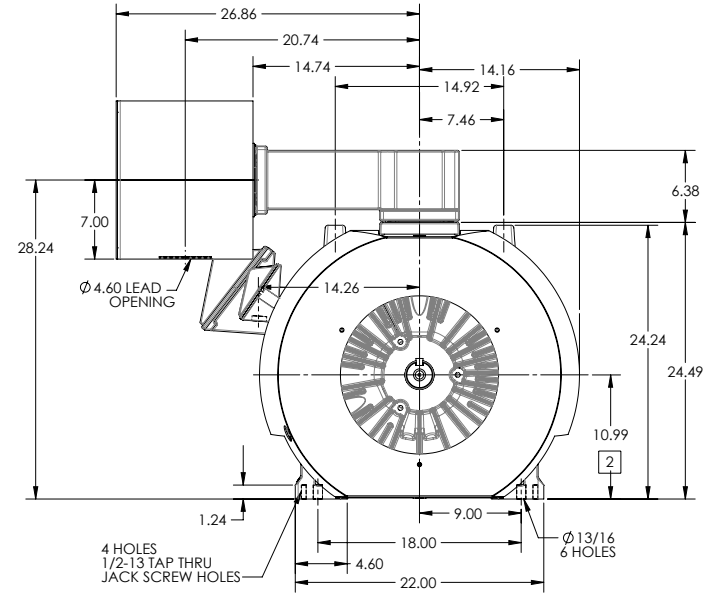
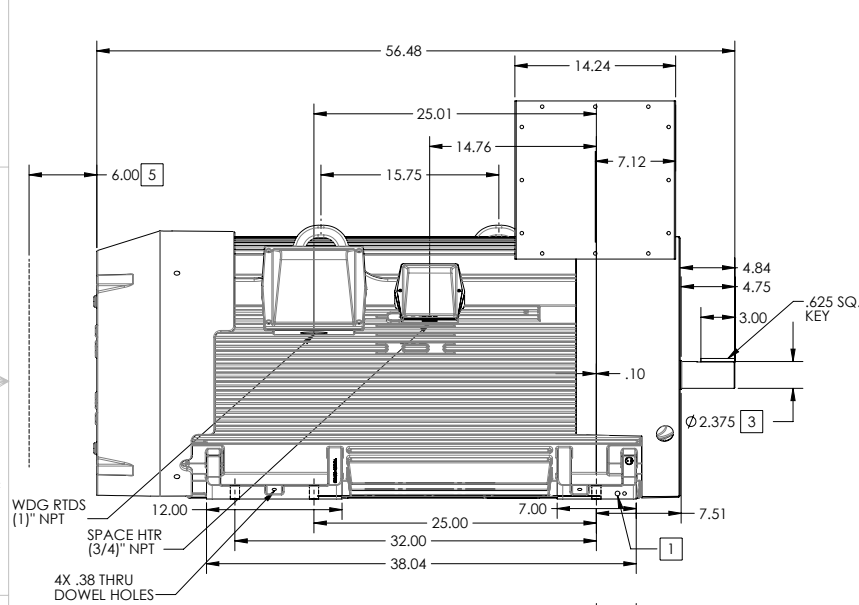
ENCLOSURE: TOTALLY ENCLOSED

FRAME GL449TS ABOVE NEMA RATINGS

COOLING: FAN COOLED

MOUNTING: FOOT

INCLUDES DOWEL PIN HOLES, VERTICAL JACK SCREW HOLES, F1 AUX BOXES FOR WDG RTD & SPACE HEATERS AND 14X14X12 FABRICATED MAIN CBOX



1. GROUND HOLES QTY 1 1/2-13 TAP; QTY 1 3/8-16 TAP
2. VARIES +.00, -.06
3. VARIES +.000, -.001
4. MOTOR WEIGHTS MAY VARY BY 15% DEPENDING ON RATING.
5. OBSTRUCTION MUST NOT ENCR OACH ON AIR INLET

CONDUIT BOX LOCATED ON OPPOSITE SIDE WHEN F-2. IF MOUNTING CLEARANCE DETAILS ARE REQUIRED, CONSULT FACTORY. MAXIMUM PERMISSIBLE SHAFT RUNOUT WHEN MEASURED AT END OF STANDARD SHAFT EXTENSION IS .003" T.I.R. TO 5 INCH DIA.

WEIGHT (LBS): 3900

DIMENSIONS ARE IN INCHES

CUSTOMER IS RESPONSIBLE FOR DETERMINING THAT MOTOR PERFORMANCE IS SUITABLE IN THE APPLICATION.

REV. DESC-INITIAL RELEASE FOR GP PRODUCT LINE			
REV: -	VERSION: 00	REVISED: 03/30/10/15/2013	TDR: 00000820614
MODEL NO. 617423-166	BY: MGHM22	Material:	REF:

BALDOR

D/S GL449TS W/ 14X14X12 CB,DOWEL JACK SCREWS,320 AUX,180 AUX

617423-166

617423-166

DUTY MASTER ALTERNATING CURRENT MOTORS

SQUIRREL-CAGE INDUCTION

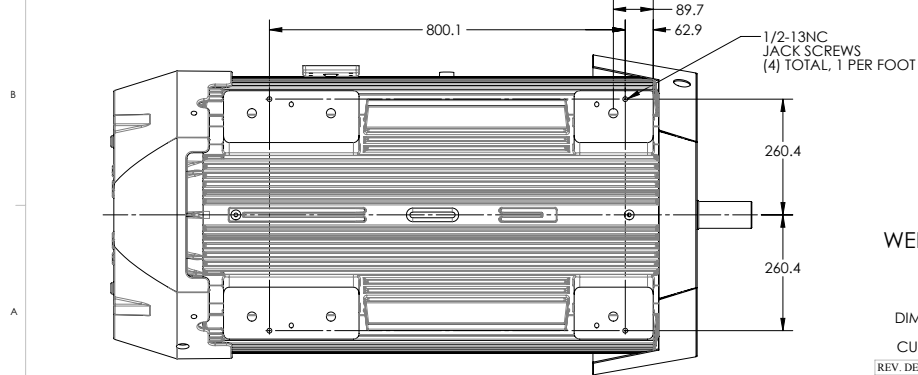
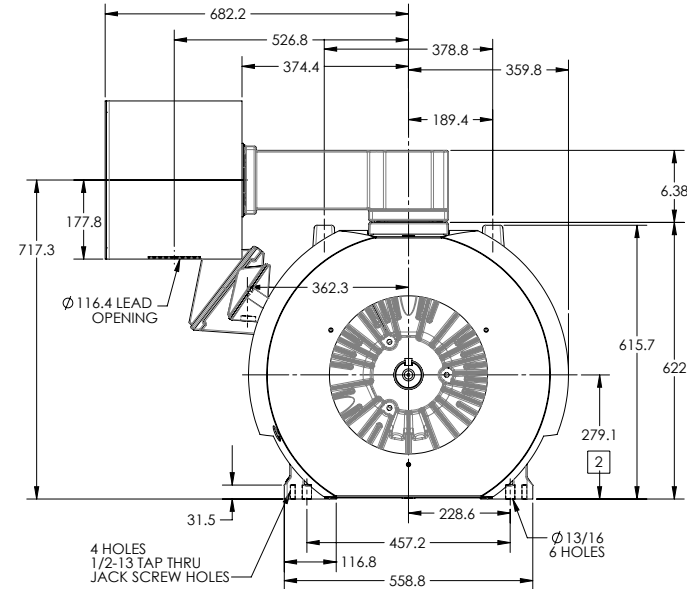
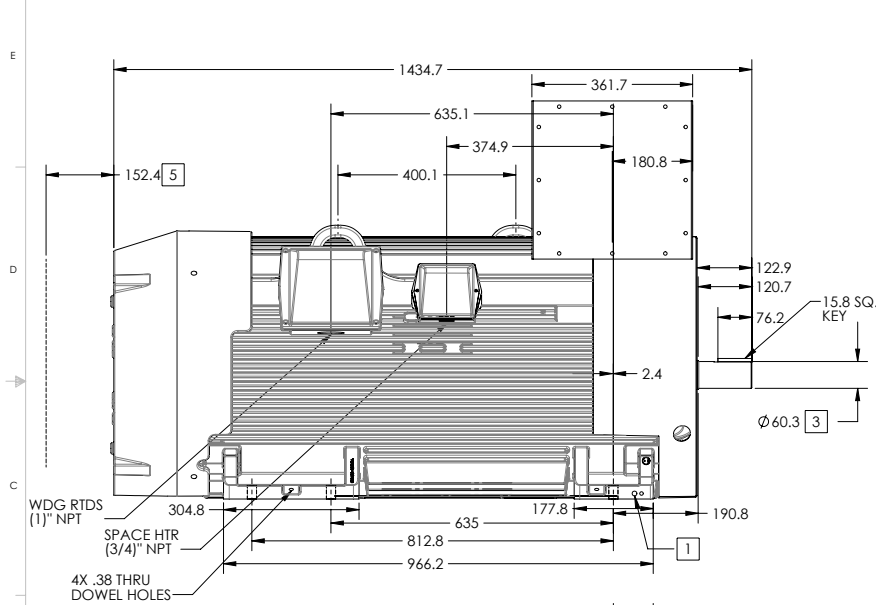
ENCLOSURE: TOTALLY ENCLOSED

FRAME GL449TS ABOVE NEMA RATINGS

COOLING: FAN COOLED

MOUNTING: FOOT

INCLUDES DOWEL PIN HOLES, VERTICAL JACK SCREW HOLES, F1 AUX BOXES FOR WDG RTD & SPACE HEATERS AND 14X14X12 FABRICATED MAIN CBOX



1. GROUND HOLES QTY 1 1/2-13 TAP; QTY 1 3/8-16 TAP
2. VARIES +.00, -1.5
3. VARIES +.000, -.025
4. MOTOR WEIGHTS MAY VARY BY 15% DEPENDING ON RATING.
5. OBSTRUCTION MUST NOT ENCR OACH ON AIR INLET

CONDUIT BOX LOCATED ON OPPOSITE SIDE WHEN F-2. IF MOUNTING CLEARANCE DETAILS ARE REQUIRED, CONSULT FACTORY. MAXIMUM PERMISSIBLE SHAFT RUNOUT WHEN MEASURED AT END OF STANDARD SHAFT EXTENSION IS .076MM T.I.R. TO 127MM DIA.

WEIGHT (N): 17400

DIMENSIONS ARE IN MM, SEE SHEET 1 FOR DIMENSIONS IN INCHES

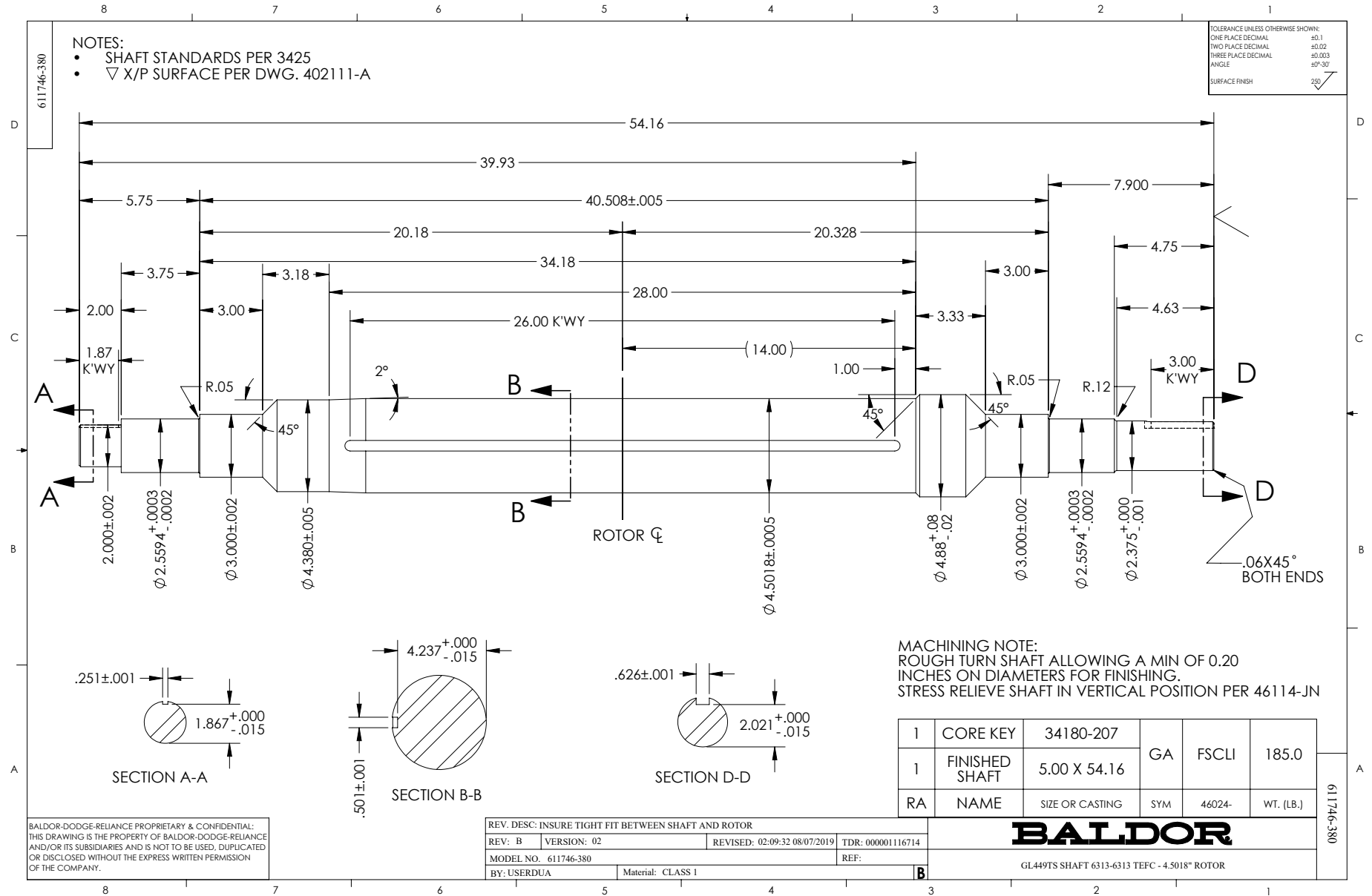
CUSTOMER IS RESPONSIBLE FOR DETERMINING THAT MOTOR PERFORMANCE IS SUITABLE IN THE APPLICATION.

REV. DESC-INITIAL RELEASE FOR GP PRODUCT LINE			
REV: -	VERSION: 00	REVISED: 03/30/10/15/2013	TDR: 00000820614
MODEL NO: 617423-166			REF:
BY: MGHMMZ2	Material:		

BALDOR

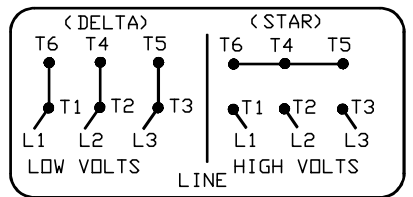
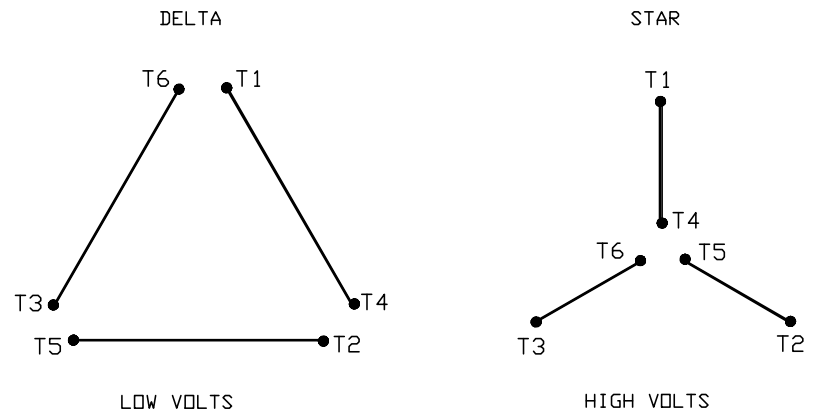
D/S GL449TS W/ 14X14X12 CB, DOWEL JACK SCREWS, 320 AUX, 180 AUX

617423-166



416820-004

A-C MOTOR
CONNECTION DIAGRAM
STANDARD 6 LEAD < DELTA/STAR CONNECTED >
DUAL VOLTAGE < LOW VOLTS/HIGH VOLTS >



< N. P. 1767-CC >

REV. DESC: FONT CHANGE FOR PDF SEARCHABLE		
REV. LTR: C	VERSION: 03	TDR: 000001009406
FILE: \RSN\00017\950	REVISED: 10:55:03 12/21/2016	BY: MGHMTT
MTL: -	© □	

BALDOR

A-C MOTOR CONNECTION DIAGRAM
SH 1 of 1

416820-004