



Customer information packet

FPM3314T

15//10HP, 3475//2900RPM, 3PH, 60//50HZ, 215T

Class - None

Division - Not Applicable

Specifications

Enclosure	OPSB
Frame	215T
Frame Material	Steel
Frequency	50.00 Hz 60.00 Hz
Haz Area Class and Group	None
Haz Area Division	Not Applicable
Motor Letter Type	Three Phase
Output @ Frequency	10.000 HP @ 50 HZ 15.000 HP @ 60 HZ
Phase	3
Synchronous Speed @ Frequency	3600 RPM @ 60 HZ
Voltage @ Frequency	380.0 V @ 50 HZ 230.0 V @ 60 HZ 190.0 V @ 50 HZ 460.0 V @ 60 HZ
Agency Approvals	CSA EEV CSA UL UR
Ambient Temperature	40 °C
Auxillary Box	No Auxillary Box
Auxillary Box Lead Termination	None
Base Indicator	Rigid
Bearing Grease Type	Polyrex EM (-20F +300F)
Blower	None
Current @ Voltage	29.000 A @ 190.0 V 35.400 A @ 230.0 V 17.700 A @ 460.0 V 14.500 A @ 380.0 V
Design Code	B
Drip Cover	No Drip Cover

Part detail

Revision	K
Type	AC
Mech. spec.	37N755
Base	
Status	PRD/A
Elec. spec.	37WGR892
Layout	37LYN755
Eff. date	08-16-2022
CD Diagram	CD0005
Poles	02
Leads	9#14
Proprietary	False
Created date	09-23-2015

Duty Rating	CONT
Efficiency @ 100% Load	89.5 %
Electrically Isolated Bearing	Not Electrically Isolated
Feedback Device	NO FEEDBACK
Front Face Code	Standard
Front Shaft Indicator	None
Heater Indicator	No Heater
High Voltage Full Load Amps	14.5 a
Insulation Class	F
Inverter Code	Not Inverter
KVA Code	G
Lifting Lugs	Standard Lifting Lugs
Locked Bearing Indicator	No Locked Bearing
Motor Lead Exit	Ko Box
Motor Lead Quantity/Wire Size	9 @ 14 AWG
Motor Lead Termination	Flying Leads
Motor Standards	NEMA
Motor Type	3734M
Mounting Arrangement	F1
Number of Poles	2
Overall Length	16.32 IN
Power Factor	88
Product Family	General Purpose
Pulley End Bearing Type	Ball
Pulley Face Code	Standard
Pulley Shaft Indicator	Standard
Rodent Screen	None
RoHS Status	ROHS COMPLIANT
Service Factor	1.15
Shaft Diameter	1.375 IN
Shaft Extension Location	Pulley End
Shaft Ground Indicator	No Shaft Grounding
Shaft Rotation	Reversible
Shaft Slinger Indicator	No Slinger

Speed	2910 rpm 3480 rpm
Speed Code	Single Speed
Starting Method	Direct on line
Thermal Device - Bearing	None
Thermal Device - Winding	None
Vibration Sensor Indicator	No Vibration Sensor
Winding Thermal 1	None
Winding Thermal 2	None

Nameplate

NP3454L

CAT.NO.	FPM3314T	CUST P/N		I.P.	23
SPEC.	37N755R892H2	SER.NO.		FRAME	215T
HZ	60	HP	15	RPM	3480
				HZ	50
				HP	10
				RPM	2910
VOLTS	230/460	CODE	G	VOLTS	190/380
		CODE	H		
AMPS	35.4/17.7	DES	B	AMPS	29/14.5
		DES	B		
EFF	89.5	SER.F.	1.15	PF	88
				EFF	90.2
				SER.F.	1.15
				PF	87
RATING	40C AMB-CONT	DE BRG	6307	GREASE	POLYREX EM
BLANK		ODE BRG	6206	MTR. WT.	131
		CLASS	F	PH	3
		ENCL	OPSB	CC	010A
HTR-VOLTS		HTR-AMPS		HTR-WATTS	

AC Induction Motor Performance Data

Record # 54324

Typical performance - not guaranteed values

Winding: 37WGR892-R001		Type: 3734M		Enclosure: OPSB	
Nameplate Data			460 V, 60 Hz: High Voltage Connection		
Rated Output (HP)	15//10		Full Load Torque	22.7 LB-FT	
Volts	230/460//190/380		Start Configuration	direct on line	
Full Load Amps	35.4/17.7//29/14.5		Breakdown Torque	69.5 LB-FT	
R.P.M.	3480//2910		Pull-up Torque	27.6 LB-FT	
Hz	60//50	Phase	3	Locked-rotor Torque	32.9 LB-FT
NEMA Design Code	B KVA Code		G	Starting Current	110 A
Service Factor (S.F.)			1.15	No-load Current	5.57 A
NEMA Nom. Eff.	89.5	Power Factor	88	Line-line Res. @ 25°C	0.91103 Ω
Rating - Duty			40C AMB-CONT	Temp. Rise @ Rated Load	55°C
S.F. Amps				Temp. Rise @ S.F. Load	71°C

Load Characteristics 460 V, 60 Hz, 15 HP

% of Rated Load	25	50	75	100	125	150	S.F.
Power Factor	58	78	85	89	90	89	90
Efficiency	89.6	91.8	91.4	90	88.1	85.8	88.9
Speed	3573.9	3546.2	3518.5	3484	3443.8	3400.3	3460
Line amperes	6.99	9.95	13.5	17.7	22.4	27.4	20.5

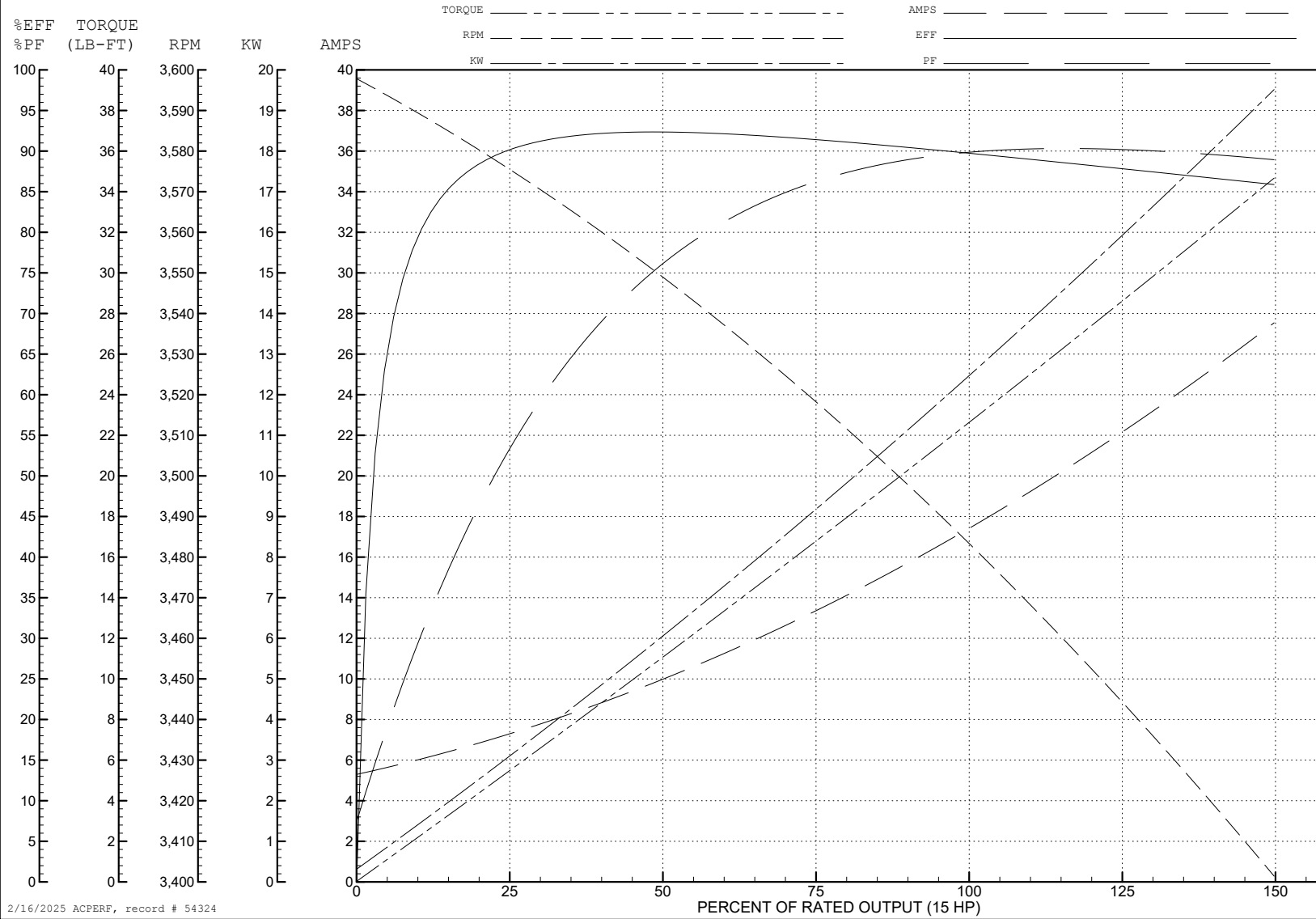
ABB Motors and Mechanical Inc.

WINDING # 37WGR892

Typical performance - not guaranteed values.

15 HP 3 PH 60 HZ 3484 RPM 460 V 3734M

TORQUES (LB-FT): PO=69.5 PU=27.6 LR=32.9 LRA=110



2/16/2025 ACPERF, record # 54324

AC Induction Motor Performance Data

Record # 54325

Typical performance - not guaranteed values

Winding: 37WGR892-R001		Type: 3734M		Enclosure: OPSB	
Nameplate Data			380 V, 50 Hz: Single Voltage Motor		
Rated Output (HP)	15//10		Full Load Torque	18.2 LB-FT	
Volts	230/460//190/380		Start Configuration	direct on line	
Full Load Amps	35.4/17.7//29/14.5		Breakdown Torque	62 LB-FT	
R.P.M.	3480//2910		Pull-up Torque	26.9 LB-FT	
Hz	60//50	Phase	3	Locked-rotor Torque	32 LB-FT
NEMA Design Code	B KVA Code		G	Starting Current	104 A
Service Factor (S.F.)			1.15	No-load Current	5.32 A
NEMA Nom. Eff.	89.5	Power Factor	88	Line-line Res. @ 25°C	0.91015 Ω
Rating - Duty	40C AMB-CONT			Temp. Rise @ Rated Load	36°C
S.F. Amps				Temp. Rise @ S.F. Load	45°C

Load Characteristics 380 V, 50 Hz, 10 HP

% of Rated Load	25	50	75	100	125	150	S.F.
Power Factor	53	74	83	87	89	89	88
Efficiency	88.4	91.5	91.5	90.6	89.2	87.4	89.8
Speed	2979	2959.3	2937.2	2913.6	2888.1	2858.6	2898
Line amperes	6.34	8.44	11.3	14.4	17.9	21.7	16.5

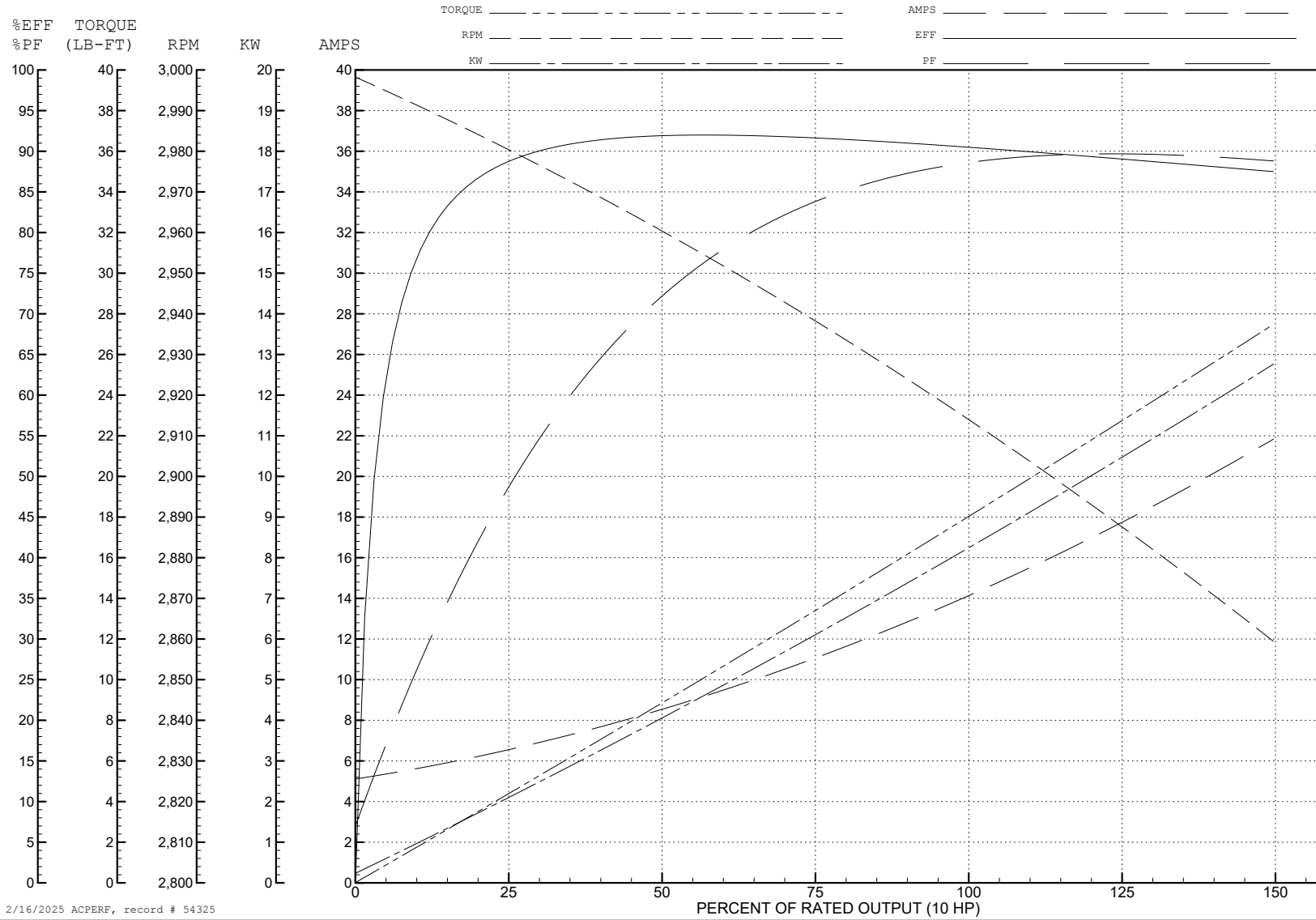
ABB Motors and Mechanical Inc.

WINDING # 37WGR892

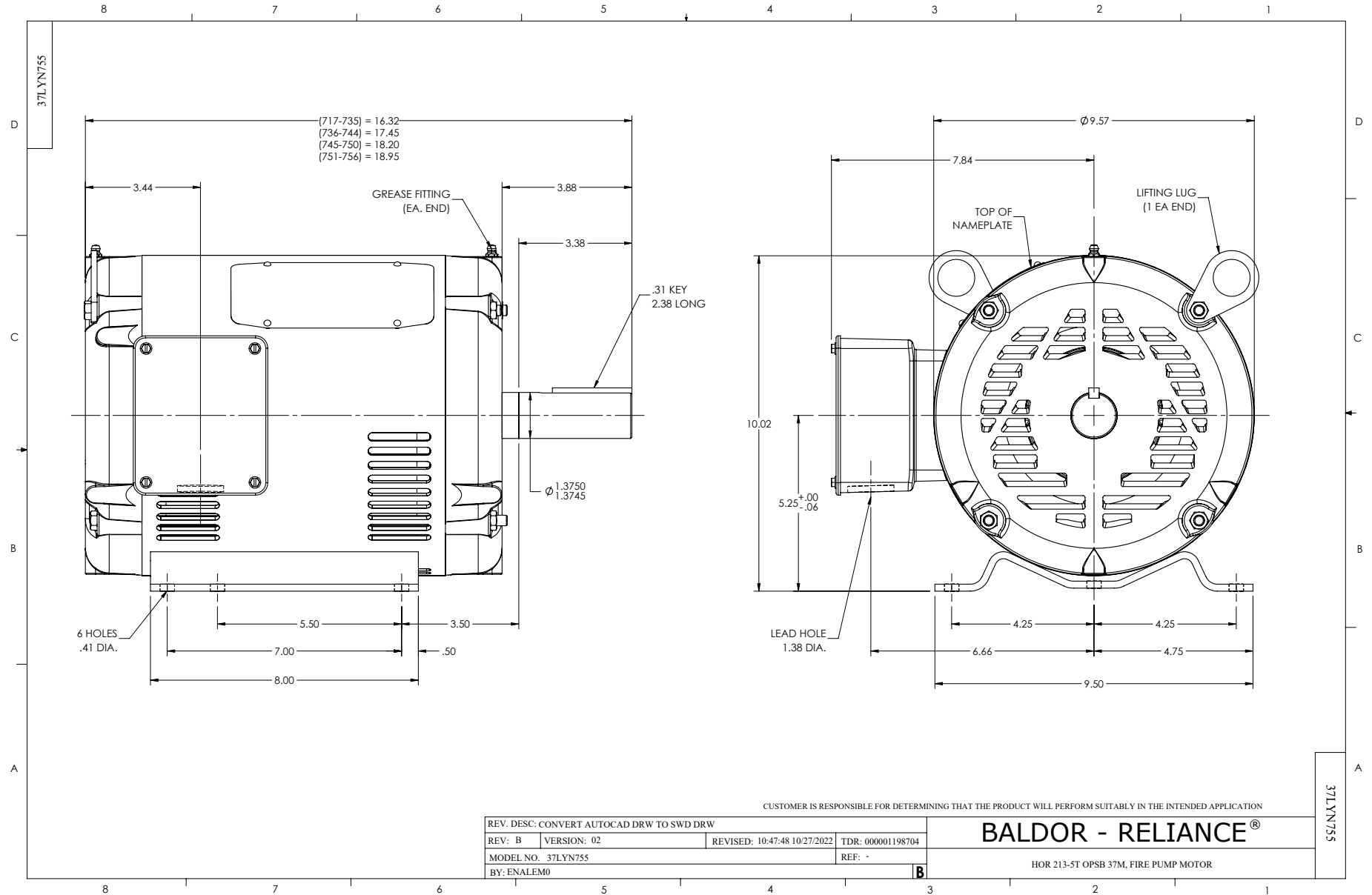
Typical performance - not guaranteed values.

10 HP 3 PH 50 HZ 2913.6 RPM 380 V 3734M

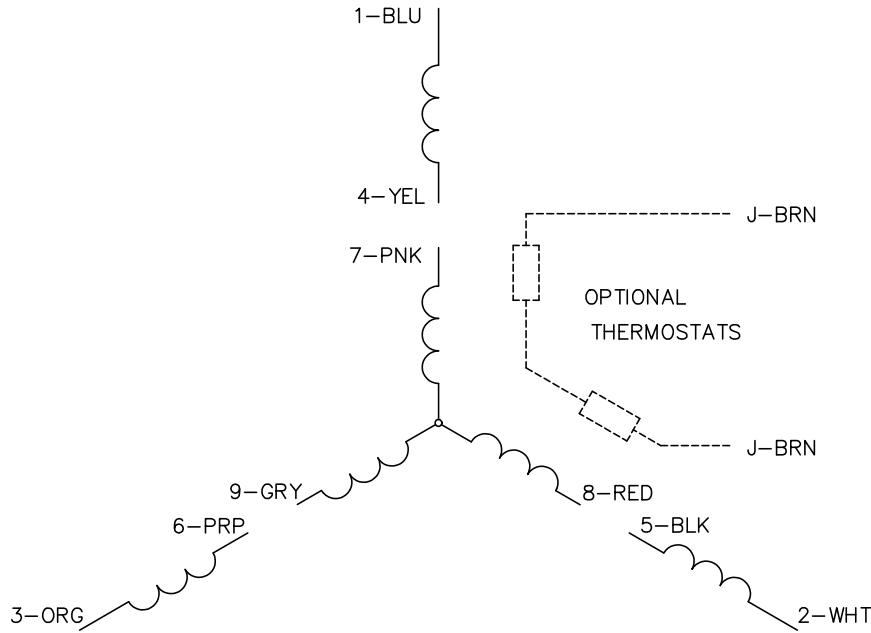
TORQUES (LB-FT): PO=62 PU=26.9 LR=32 LRA=104



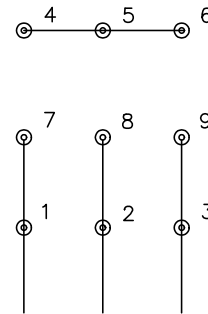
2/16/2025 ACPERF, record # 54325



CD0005

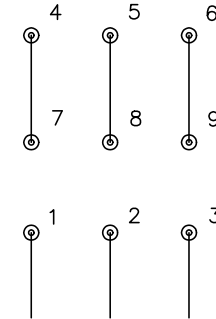


LOW VOLTAGE
(2Y)



LINE

HIGH VOLTAGE
(1Y)



LINE

NOTES:

1. INTERCHANGE ANY TWO LINE LEADS TO REVERSE ROTATION.
2. OPTIONAL THERMOSTATS ARE PROVIDED WHEN SPECIFIED.
3. ACTUAL NUMBER OF INTERNAL PARALLEL CIRCUITS MAY BE A MULTIPLE OF THOSE SHOWN ABOVE.
4. LEAD COLORS ARE OPTIONAL. LEADS MUST ALWAYS BE NUMBERED AS SHOWN.

CD0005

REV. DESC: REVISE TO SHOW OPTIONAL COLORS			
REV. LTR: E	BY: JLP	REVISED: 01/19/99 10:15	TDR: 0171435
S00000		FILE: AAA00005140	MDL: -
		MTL: -	

BALDOR ELECTRIC Co.

3PH, DV, 9 LEADS