

BALDOR • RELIANCE

Customer information packet

VEL11318A

1HP, 1750RPM, 1PH, 60HZ, 56C, 3528LC, OPEN, F1

Class - None

Division - Not Applicable

Specifications

Enclosure	OPEN
Frame	56C
Frame Material	Steel
Frequency	60.00 Hz
Haz Area Class and Group	None
Haz Area Division	Not Applicable
Motor Letter Type	Cap Start, Cap Run
Output @ Frequency	1.000 HP @ 60 HZ
Phase	1
Synchronous Speed @ Frequency	1800 RPM @ 60 HZ
Voltage @ Frequency	115.0 V @ 60 HZ 230.0 V @ 60 HZ
Agency Approvals	CURUSEEV
Ambient Temperature	40 °C
Auxillary Box	No Auxillary Box
Auxillary Box Lead Termination	None
Base Indicator	No Mounting
Bearing Grease Type	Polyrex EM (-20F +300F)
Blower	None
Current @ Voltage	4.200 A @ 230.0 V 8.400 A @ 115.0 V
Design Code	L
Drip Cover	Drip Cover
Duty Rating	CONT
Efficiency @ 100% Load	82.6 %
Electrically Isolated Bearing	Not Electrically Isolated
Feedback Device	NO FEEDBACK
Front Face Code	Terminal Panel
Front Shaft Indicator	None
Heater Indicator	No Heater
High Voltage Full Load Amps	4.2 a
Insulation Class	B

Part detail

Revision	P
Type	AC
Mech. spec.	35H993
Base	
Status	PRD/A
Elec. spec.	35WGL247
Layout	35LYH993
Eff. date	01-02-2025
CD Diagram	CD0703
Poles	04
Leads	7#16
Proprietary	False
Created date	02-17-2015

Inverter Code	Not Inverter
KVA Code	K
Lifting Lugs	No Lifting Lugs
Locked Bearing Indicator	Locked Bearing
Motor Lead Exit	Terminal Panel
Motor Lead Quantity/Wire Size	7 @ 16 AWG
Motor Lead Termination	None
Motor Standards	NEMA
Motor Type	3528LC
Mounting Arrangement	F1
Number of Poles	4
Overall Length	12.74 IN
Power Factor	93
Product Family	General Purpose
Pulley End Bearing Type	Ball
Pulley Face Code	C-Face
Pulley Shaft Indicator	Standard
Rodent Screen	None
RoHS Status	ROHS COMPLIANT
Service Factor	1.15
Shaft Diameter	0.625 IN
Shaft Extension Location	Pulley End
Shaft Ground Indicator	No Shaft Grounding
Shaft Rotation	Reversible
Shaft Slinger Indicator	No Slinger
Speed	1750 rpm
Speed Code	Single Speed
Starting Method	Direct on line
Thermal Device - Bearing	None
Thermal Device - Winding	None
Vibration Sensor Indicator	No Vibration Sensor
Winding Thermal 1	Automatic Thermal Overload
Winding Thermal 1 Location	ES
Winding Thermal 2	None

Nameplate

NP3273L									
CAT.NO.	VEL11318A								
SPEC.	35H993L247G1								
HP	1								
VOLTS	115/230								
AMP	8.4/4.2								
RPM	1750								
FRAME	56C		HZ	60		PH	1		
SER.F.	1.15	CODE	K	DES	L	CL	B		
F.L. AVG. EFF.	82.6	PF	93						
RATING	40C AMB-CONT								
CC									
DE	6205		ODE	6203					
ENCL	OPEN	SN							

AC Induction Motor Performance Data

Record # 49269

Typical performance - not guaranteed values

Winding: 35WGL247-R001		Type: 3528LC		Enclosure: OPEN	
Nameplate Data			115 V, 60 Hz: Single Voltage Motor		
Rated Output (HP)		1	Full Load Torque		2.97 LB-FT
Volts		115/230	Start Configuration		direct on line
Full Load Amps		8.4/4.2	Breakdown Torque		8.18 LB-FT
R.P.M.		1750	Pull-up Torque		7.24 LB-FT
Hz	60 Phase	1	Locked-rotor Torque		9.05 LB-FT
NEMA Design Code	L KVA Code	K	Starting Current		73.1 A
Service Factor (S.F.)		1.15	No-load Current		2.55 A
NEMA Nom. Eff.	82.6 Power Factor	93	Line-line Res. @ 25°C		0.615 Ω A Ph 2.15 Ω B Ph
Rating - Duty		40C AMB-CONT	Temp. Rise @ Rated Load		17°C
S.F. Amps			Temp. Rise @ S.F. Load		20°C
			Locked-rotor Power Factor		88.4
			Rotor inertia		0.166 LB-FT ²

Load Characteristics 115 V, 60 Hz, 1 HP

% of Rated Load	25	50	75	100	125	150	S.F.
Power Factor	78	87	91	93	94	94	94
Efficiency	57.9	74.6	81.1	83.7	84.1	82.9	83.9
Speed	1788	1779	1769	1758	1744	1729	1750
Line amperes	3.65	4.96	6.55	8.27	10.3	12.5	9.49

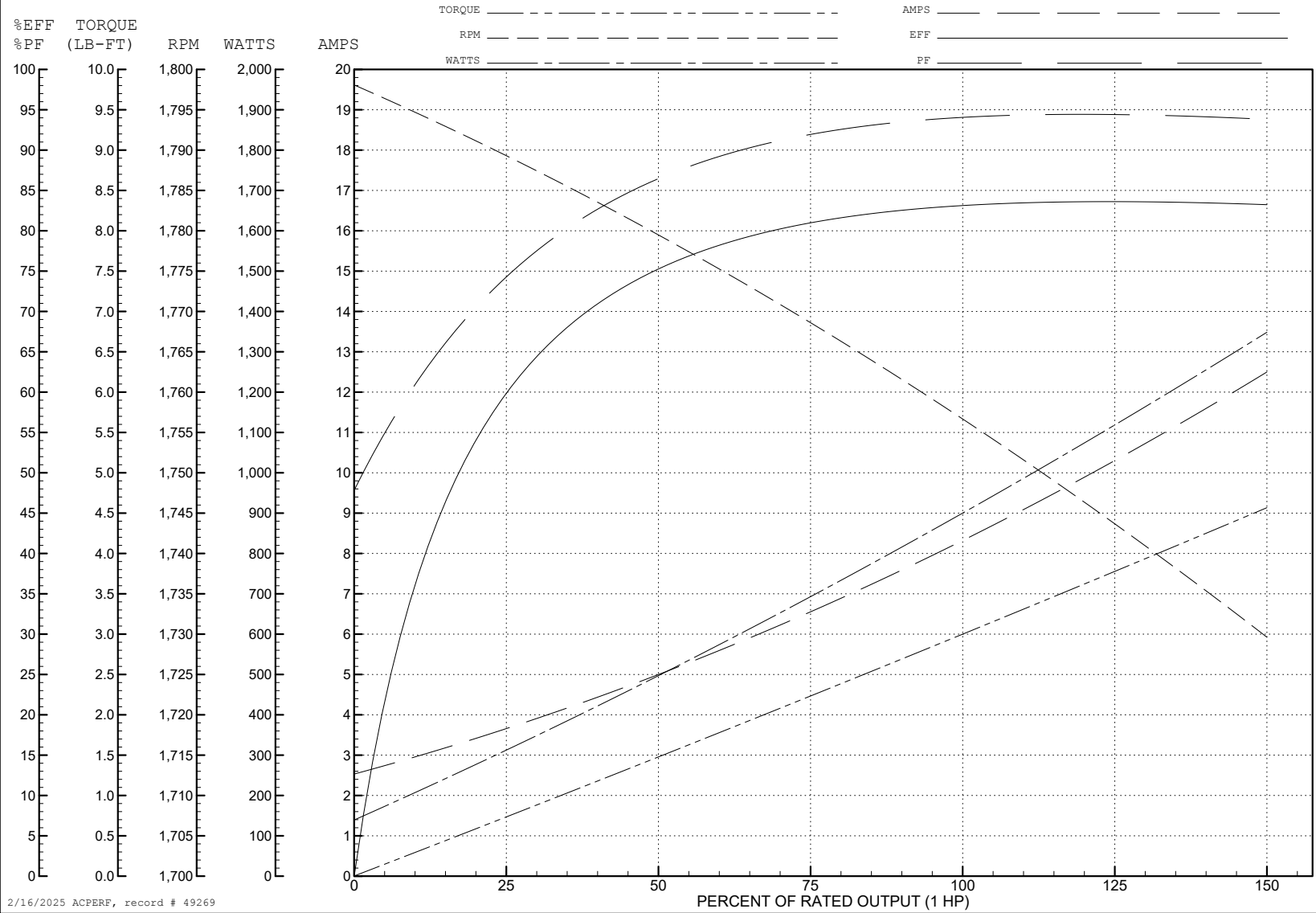
ABB Motors and Mechanical Inc.

WINDING # 35WGL247

Typical performance - not guaranteed values.

1 HP 1 PH 60 HZ 1750 RPM 115 V 3528LC

TORQUES (LB-FT): PO=8.18 PU=7.24 LR=9.05 LRA=73.1



2/16/2025 ACPERF, record # 49269

AC Induction Motor Performance Data

Record # 61967

Typical performance - not guaranteed values

Winding: 35WGL247-R001		Type: 3528LC		Enclosure: OPEN	
Nameplate Data			230 V, 60 Hz: High Voltage Connection		
Rated Output (HP)	1	Full Load Torque	2.982 LB-FT		
Volts	115/230	Start Configuration	direct on line		
Full Load Amps	8.4/4.2	Breakdown Torque	8.14 LB-FT		
R.P.M.	1750	Pull-up Torque	6.67 LB-FT		
Hz	60 Phase	1	Locked-rotor Torque	7.79 LB-FT	
NEMA Design Code	L KVA Code	K	Starting Current	35.5 A	
Service Factor (S.F.)	1.15		No-load Current	1.29 A	
NEMA Nom. Eff.	82.6 Power Factor	93	Line-line Res. @ 25°C	2.5284 Ω A Ph 2.1561 Ω B Ph	
Rating - Duty	40C AMB-CONT		Temp. Rise @ Rated Load	43°C	
S.F. Amps			Temp. Rise @ S.F. Load	51°C	

Load Characteristics 230 V, 60 Hz, 1 HP

% of Rated Load	25	50	75	100	125	150	S.F.
Power Factor	74	86	91	93	94	94	94
Efficiency	64.5	78.1	82	83.3	82.5	80.4	82.8
Speed	1790.3	1780.9	1769.4	1757.6	1743.1	1726	1749
Line amperes	1.7	2.44	3.28	4.18	5.21	6.43	4.8

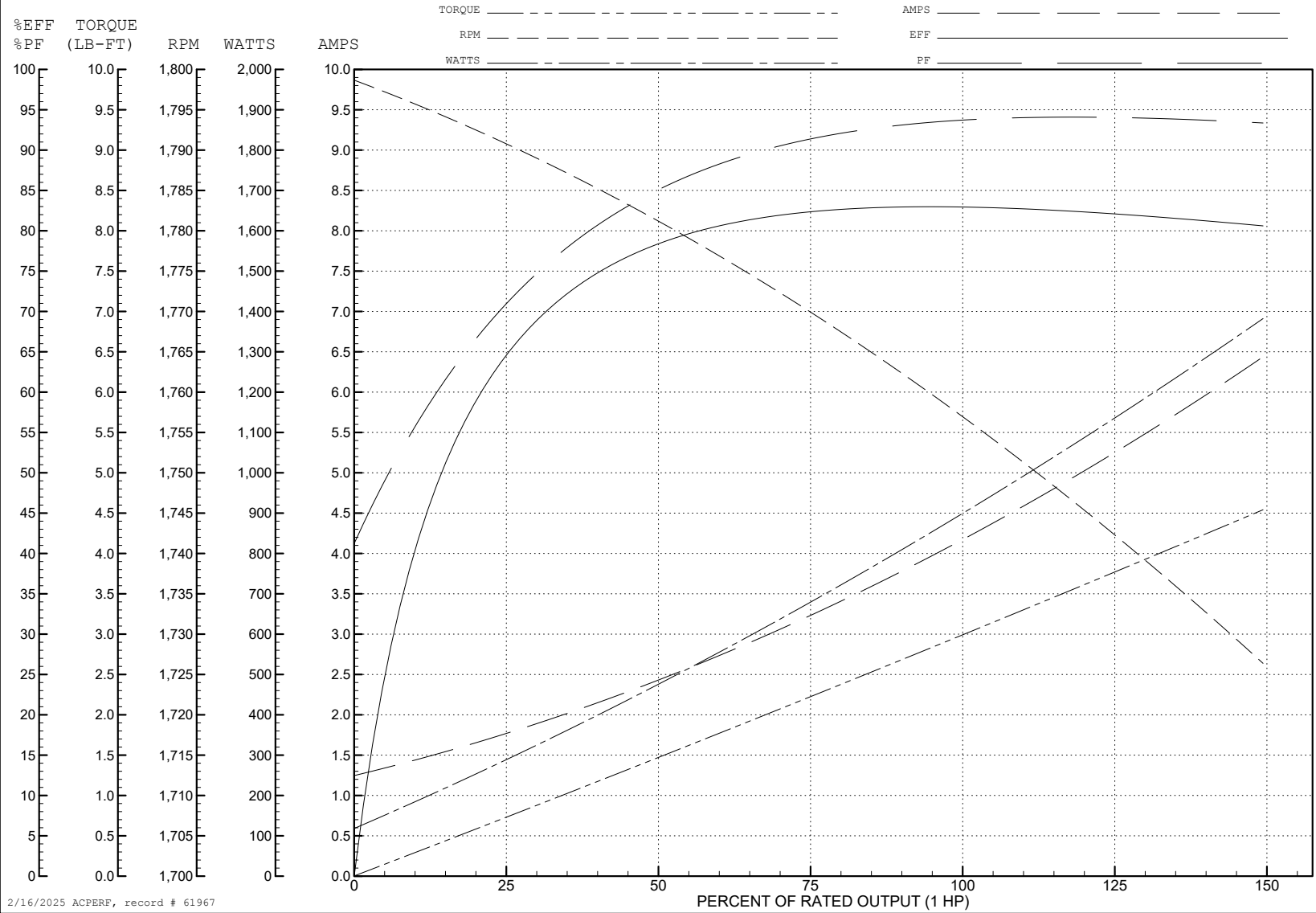
ABB Motors and Mechanical Inc.

WINDING # 35WGL247

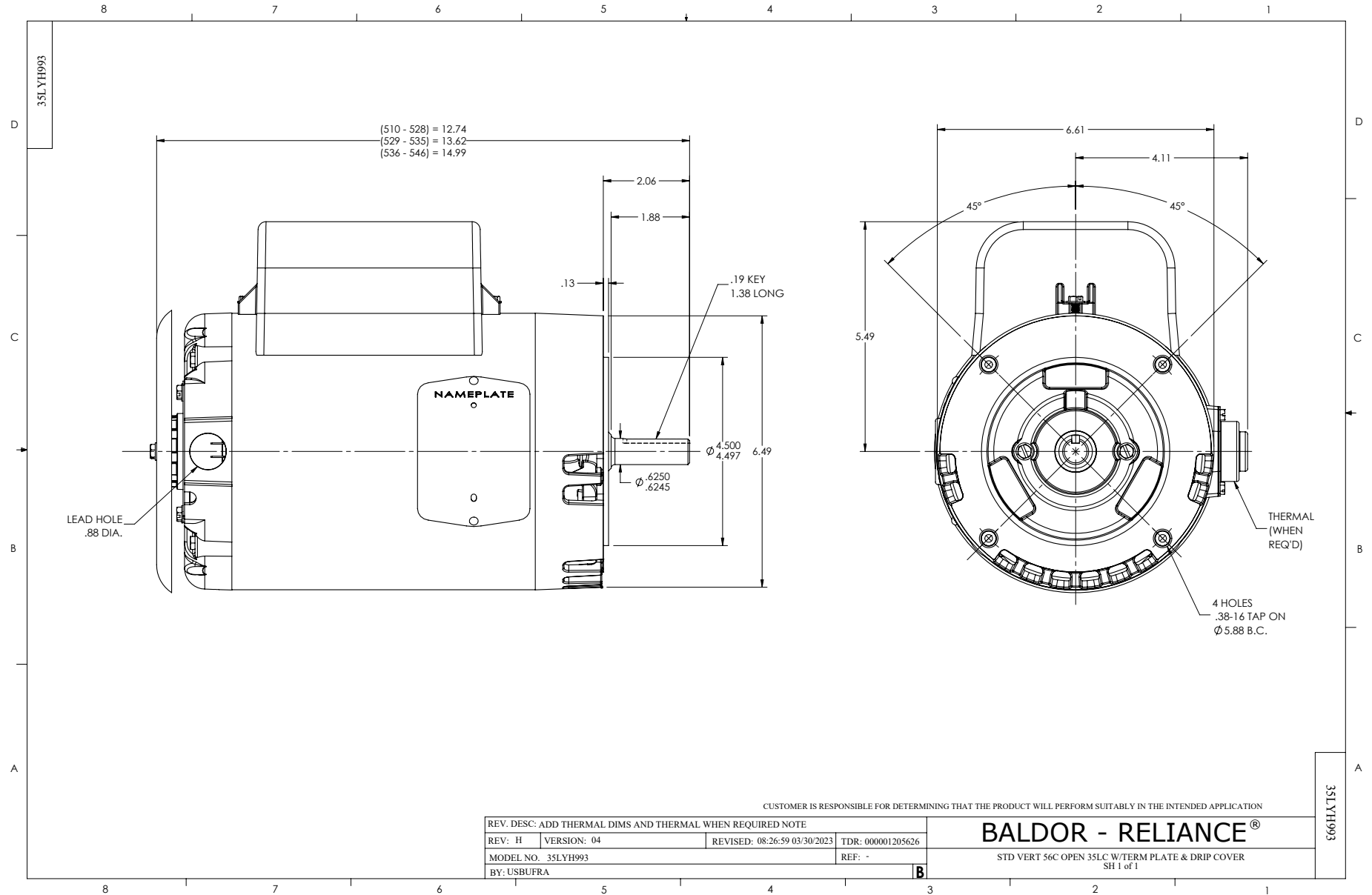
Typical performance - not guaranteed values.

1 HP 1 PH 60 HZ 1750 RPM 230 V 3528LC

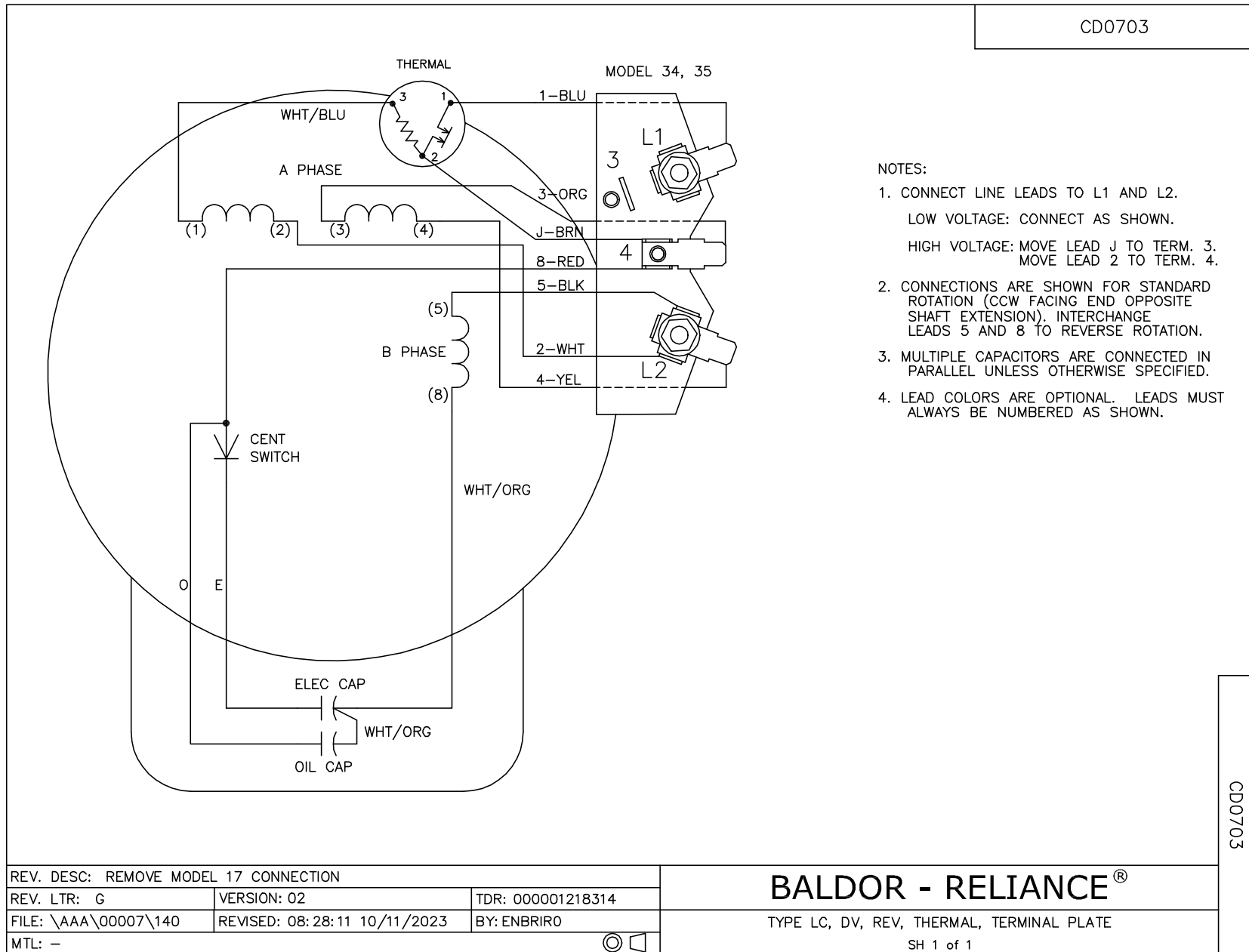
TORQUES (LB-FT): PO=8.14 PU=6.67 LR=7.79 LRA=35.5



2/16/2025 ACPERF, record # 61967



CD0703



CD0703

REV. DESC: REMOVE MODEL 17 CONNECTION		
REV. LTR: G	VERSION: 02	TDR: 000001218314
FILE: \AAA\00007\140	REVISED: 08:28:11 10/11/2023	BY: ENBRIRO
MTL: -		

BALDOR - RELIANCE®

TYPE LC, DV, REV, THERMAL, TERMINAL PLATE
SH 1 of 1