

**BALDOR • RELIANCE**

---

# Customer information packet

## 35R437W946G1B

1HP, 950//1140RPM, 3PH, 50//60HZ, 143Z, 3528M

Class - None

Division - Not Applicable

## Specifications

Enclosure	TEFC
Frame	143Z
Frame Material	Steel
Frequency	50.00 Hz 60.00 Hz
Haz Area Class and Group	None
Haz Area Division	Not Applicable
Motor Letter Type	Three Phase
Output @ Frequency	1.000 HP @ 60 HZ 1.000 HP @ 50 HZ
Phase	3
Synchronous Speed @ Frequency	1000 RPM @ 50 HZ
Voltage @ Frequency	230.0 V @ 50 HZ 230.0 V @ 60 HZ 460.0 V @ 60 HZ 460.0 V @ 50 HZ
Ambient Temperature	40 °C
Base Indicator	No Mounting
Bearing Grease Type	No Grease
Blower	None
Current @ Voltage	3.800 A @ 230.0 V 1.900 A @ 460.0 V
Design Code	B
Duty Rating	CONT
Efficiency @ 100% Load	69.0 %
Feedback Device	NO FEEDBACK
Heater Indicator	No Heater
High Voltage Full Load Amps	1.9 a
Insulation Class	F
Inverter Code	Not Inverter
KVA Code	F
Motor Lead Quantity/Wire Size	9 @ 18 AWG

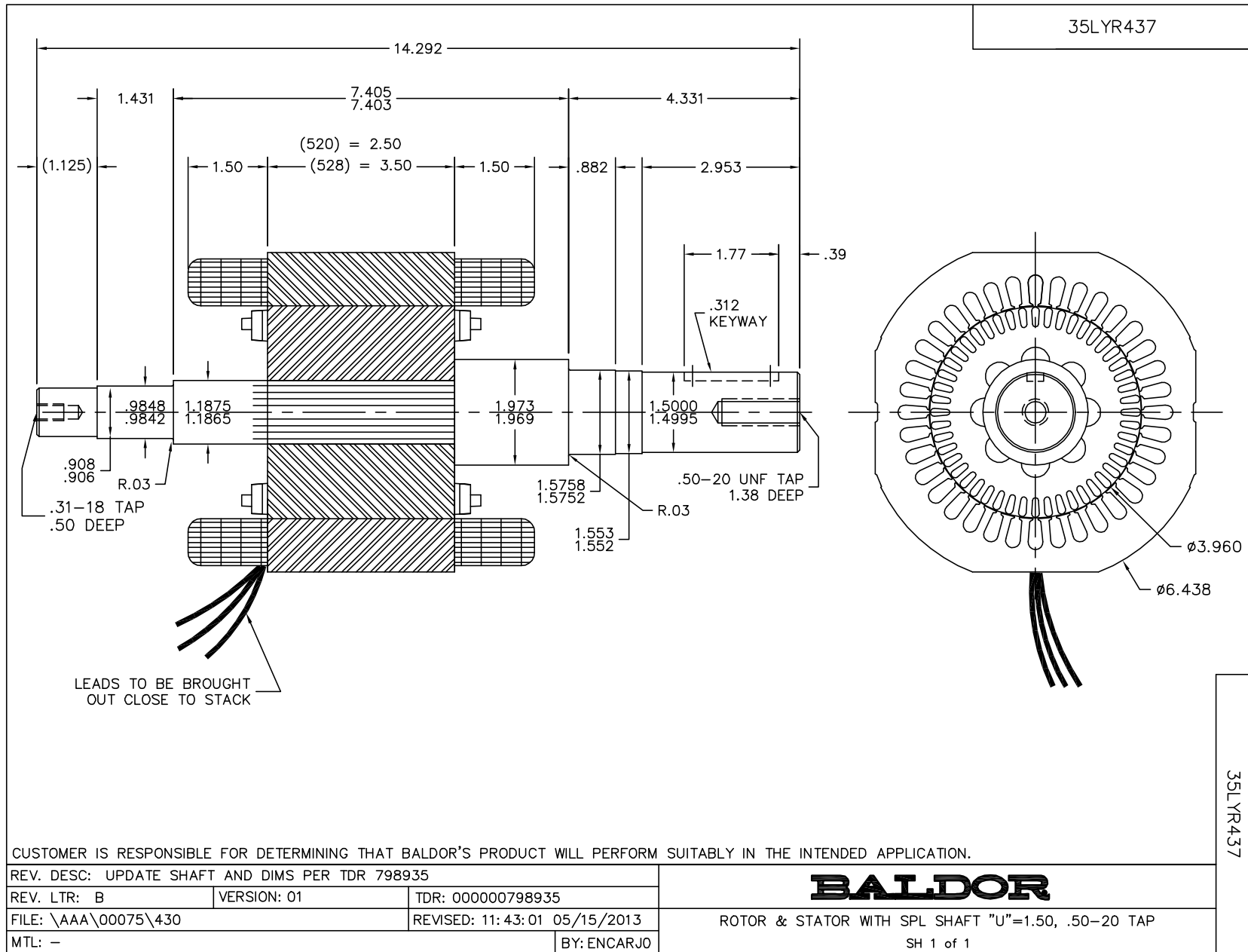
## Part detail

Revision	N
Type	AC
Mech. spec.	35R437
Base	
Status	NLA/A
Elec. spec.	35WGW946
Layout	35LYR437
Eff. date	06-12-2024
CD Diagram	CD0005
Poles	06
Leads	9#18
Proprietary	False
Created date	01-01-0001

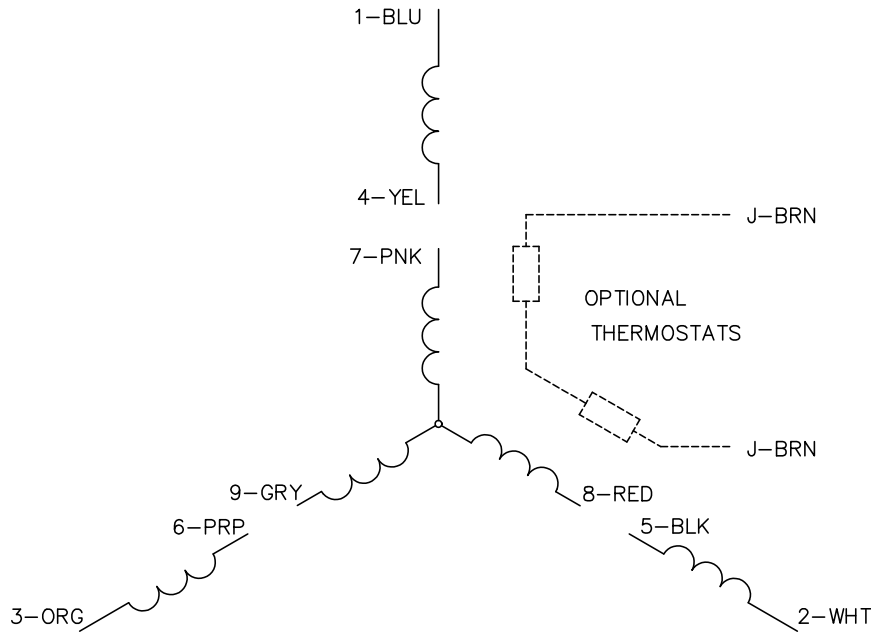
<b>Motor Standards</b>	NEMA
<b>Motor Type</b>	3528M
<b>Mounting Arrangement</b>	F1
<b>Number of Poles</b>	6
<b>Overall Length</b>	14.29 IN
<b>Power Factor</b>	67
<b>Product Family</b>	General Purpose
<b>Rodent Screen</b>	None
<b>Service Factor</b>	1.15
<b>Shaft Diameter</b>	1.500 IN
<b>Shaft Rotation</b>	Reversible
<b>Shaft Slinger Indicator</b>	No Slinger
<b>Speed</b>	1140 rpm 950 rpm
<b>Speed Code</b>	Single Speed
<b>Starting Method</b>	Direct on line
<b>Thermal Device - Winding</b>	None
<b>Winding Thermal 1</b>	None
<b>Winding Thermal 2</b>	None

**Nameplate**

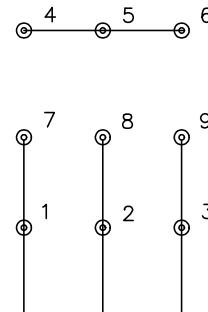
<b>NP1263L</b>									
<b>CAT.NO.</b>									
<b>SPEC.</b>	35R437W946G1B								
<b>HP</b>	1								
<b>VOLTS</b>	230/460								
<b>AMP</b>	3.8/1.9								
<b>RPM</b>	950//1140								
<b>FRAME</b>	143Z			<b>HZ</b>	50//60	<b>PH</b>	3		
<b>SER.F.</b>	1.15	<b>CODE</b>	F	<b>DES</b>	B	<b>CL</b>	F		
<b>NEMA-NOM-EFF</b>	69	<b>PF</b>	67						
<b>RATING</b>	40C AMB-CONT								
<b>CC</b>									
<b>DE</b>		<b>ODE</b>							
<b>ENCL</b>	TEFC	<b>SN</b>							



CD0005

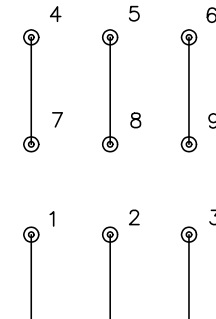


LOW VOLTAGE (2Y)



LINE

HIGH VOLTAGE (1Y)



LINE

NOTES:

1. INTERCHANGE ANY TWO LINE LEADS TO REVERSE ROTATION.
2. OPTIONAL THERMOSTATS ARE PROVIDED WHEN SPECIFIED.
3. ACTUAL NUMBER OF INTERNAL PARALLEL CIRCUITS MAY BE A MULTIPLE OF THOSE SHOWN ABOVE.
4. LEAD COLORS ARE OPTIONAL. LEADS MUST ALWAYS BE NUMBERED AS SHOWN.

CD0005

REV. DESC: REVISE TO SHOW OPTIONAL COLORS			
REV. LTR: E	BY: JLP	REVISED: 01/19/99 10:15	TDR: 0171435
S00000		FILE: AAA00005140	MDL: -
		MTL: -	

**BALDOR ELECTRIC Co.**

3PH, DV, 9 LEADS