

BALDOR® • RELIANCE™

Customer information packet

A40-7042-5130

100HP, 2965RPM, 3PH, 50HZ, 405LP, A4066M, TEFC

Class - CLI GP D

Division - Division I

Specifications

Enclosure	TEFC
Frame	405LP
Frame Material	Iron
Frequency	50.00 Hz
Haz Area Class and Group	CLI GP D
Haz Area Division	Division I
Motor Letter Type	Three Phase
Output @ Frequency	100.000 HP @ 50 HZ
Phase	3
Synchronous Speed @ Frequency	3000 RPM @ 50 HZ
Voltage @ Frequency	415.0 V @ 50 HZ
Agency Approvals	UL CCSA US CSA
Ambient Temperature	40 °C
Auxillary Box	No Auxillary Box
Base Indicator	No Mounting
Bearing Grease Type	Polyrex EM (-20F +300F)
Current @ Voltage	122.000 A @ 415.0 V
Design Code	B
Drip Cover	Drip Cover
Duty Rating	CONT
Efficiency @ 100% Load	95.0 %
Feedback Device	NO FEEDBACK
Haz Area Temp Code	T3C
Heater Indicator	No Heater
High Voltage Full Load Amps	122.0 a
Insulation Class	F
Inverter Code	Inverter Ready
KVA Code	G
Lifting Lugs	Vertical Lifting Lugs
Motor Lead Quantity/Wire Size	3 @ 2 AWG

Part detail

Revision	D
Type	AC
Mech. spec.	
Base	
Status	PRD/A
Elec. spec.	A40WG5130
Layout	617433-545
Eff. date	05-06-2024
CD Diagram	416820-036
Poles	02
Leads	3#2
Proprietary	False
Created date	03-17-2016

Motor Standards	NEMA
Motor Type	A4066M
Mounting Arrangement	V1
Number of Poles	2
Overall Length	42.67 IN
Power Factor	89
Product Family	General Industrial
Pulley End Bearing Type	Ball
Pulley Face Code	P-Base
Service Factor	1.15
Shaft Ground Indicator	No Shaft Grounding
Shaft Rotation	Reversible
Shaft Slinger Indicator	No Slinger
Speed	2965 rpm
Speed Code	Single Speed
Starting Method	Direct on line
Thermal Device - Bearing	None
Thermal Device - Winding	Normally Closed Thermostat

Nameplate

NP2496L	
MOBIL POLYREX EM	

000692000FX



000613006PC

CLASS I GROUP D X X **NO.****CLASS II GROUP** X X X**OPERATING TEMP CODE** T3C

NP3145L

SPEC NO.	A40-7042-5130	CAT.NO.		FRAME	405LP
HP	100	VOLTS	415	PHASE	3
RPM	2965	AMPS	122	HZ	50
DRIVE END BEARING	65BC03JP30A	DUTY	CONT	INSUL.CLASS	F
OPP D.E. BEARING	70BT03JR00X	ENCL	TEFC	CODE	G
SER.NO.		POWER FACTOR	89	NEMA-NOM-EFFICIENCY	95
				MAX CORR KVAR	14
				GUARANTEED EFFICIENCY	94.1
				NEMA NOM/CSA QUOTED EFF	
	CL I, ZONE 1, GR IIA, T3			MOTOR WEIGHT	

DUTY MASTER ALTERNATING CURRENT MOTORS

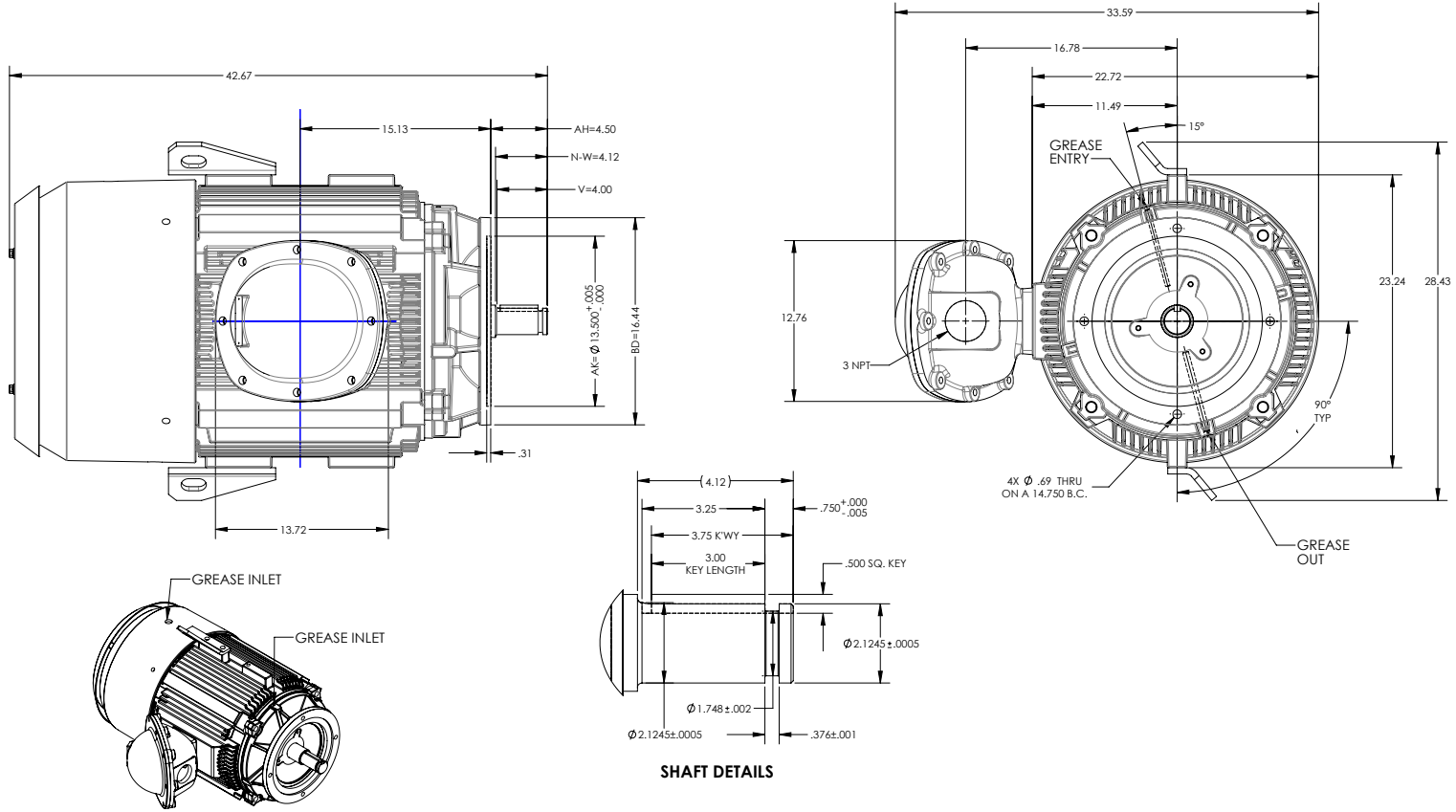
SQUIRREL-CAGE INDUCTION
FRAME G405LP

COOLING: FAN COOLED

ENCLOSURE: X/P, UNDERWRITERS LISTED

MOUNTING: FOOTLESS, V-1

STANDARD CAST IRON C/BOX
VERTICAL LIFTINGS & DRIP COVER
CLASS1-GROUP D



IF MOUNTING CLEARANCE DETAILS ARE REQUIRED, CONSULT FACTORY.

MAXIMUM PERMISSIBLE SHAFT RUNOUT WHEN MEASURED AT END OF STANDARD SHAFT EXTENSION IS .001" T.I.R.

FACE RUNOUT = .004 MAX. T.I.R.
ECCENTRICITY = .004 MAX. T.I.R.

WEIGHT (LBS): 1400 - MAY VARY BY 15% DEPENDING ON RATING.

DIMENSIONS ARE IN INCHES

CUSTOMER IS RESPONSIBLE FOR DETERMINING THAT MOTOR PERFORMANCE IS SUITABLE IN THE APPLICATION.

SHEET NUMBER
1 OF 1

617433-545

REV. -	VERSION: 00	REVISED: 11-42-58 03/17/2016	TDR: 00000967780
MODEL NO. 617433-545	BY: RAGHZT	Material:	REF:

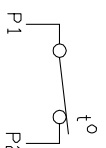
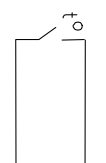
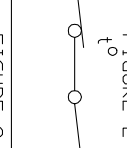
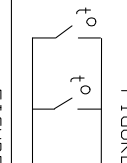
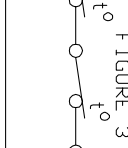
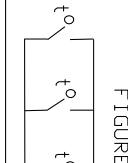
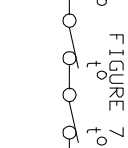
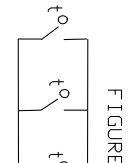
BALDOR

G405LP FCXP V1 FTLS- GRP D-STD C/BOX-VERT. LIFTG & DRIP CVR

617433-545

CONNECTION DIAGRAM ACCESSORIES

MOTOR WINDING THERMOSTATS	
CONTACTS _____ @ _____ °C	
FIGURE NUMBER _____	
CONTACT RATING	
VOLTS	CONTINUOUS AMPERES
110-120	3.0
220-240	1.5
440-480	0.75
550-600	0.60
	INRUSH AMPERES
	30
	15
	7.5
	6.0

NORMALLY CLOSED	THERMOSTATS	NORMALLY OPEN
 <p>FIGURE 1</p>		 <p>FIGURE 4</p>
 <p>FIGURE 2</p>		 <p>FIGURE 5</p>
 <p>FIGURE 3</p>		 <p>FIGURE 6</p>
 <p>FIGURE 7</p>		 <p>FIGURE 8</p>

CUSTOMER _____ CUSTOMER ORDER NO. _____ S.O. NO. _____

418174-006

418174-006

REV. DESC: LOADED TO BUS		
REV. LTR: A	VERSION: 01	TDR: 000000570390
FILE: \RAG\00013\849	REVISED: 10:16:21 12/07/2010	BY: RAGDRF
MTL: -		

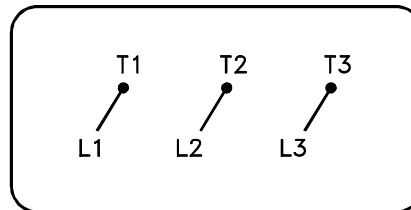
BALDOR

A-C MOTOR CONNECTION ACCESSORIES

SH 1 of 1

416820-036

A-C MOTOR
CONNECTION DIAGRAM
STANDARD 3 LEAD CONNECTED



(N.P. 1575-BA)

416820-036

REV. DESC: LOADED TO BUS, C/R 335225		
REV. LTR: -	VERSION: 00	TDR: 000000538207
FILE: \MGA\00000\682	REVISED: 11:54:06 04/30/2010	
MTL: -	BY: RAGRA	

BALDOR

CONN DIAG - STANDARD 3 LEAD
SH 1 of 1