

PRODUCT INFORMATION PACKET

Model No: 184TPFSC10322
Catalog No: NM2409
10,3600,184T,TEFC,3/460
NovaMAX - EC Permanent Magnet Motor



Regal and Marathon are trademarks of Regal Beloit Corporation or one of its affiliated companies.
©2018 Regal Beloit Corporation, All Rights Reserved. MC017097E



Nameplate Specifications

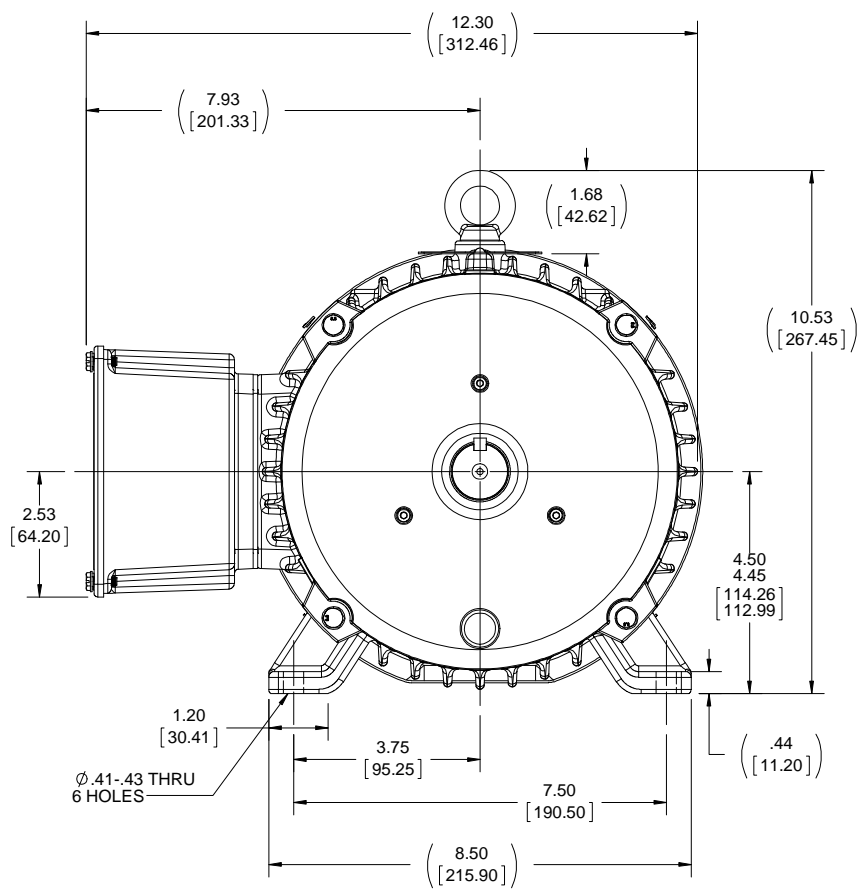
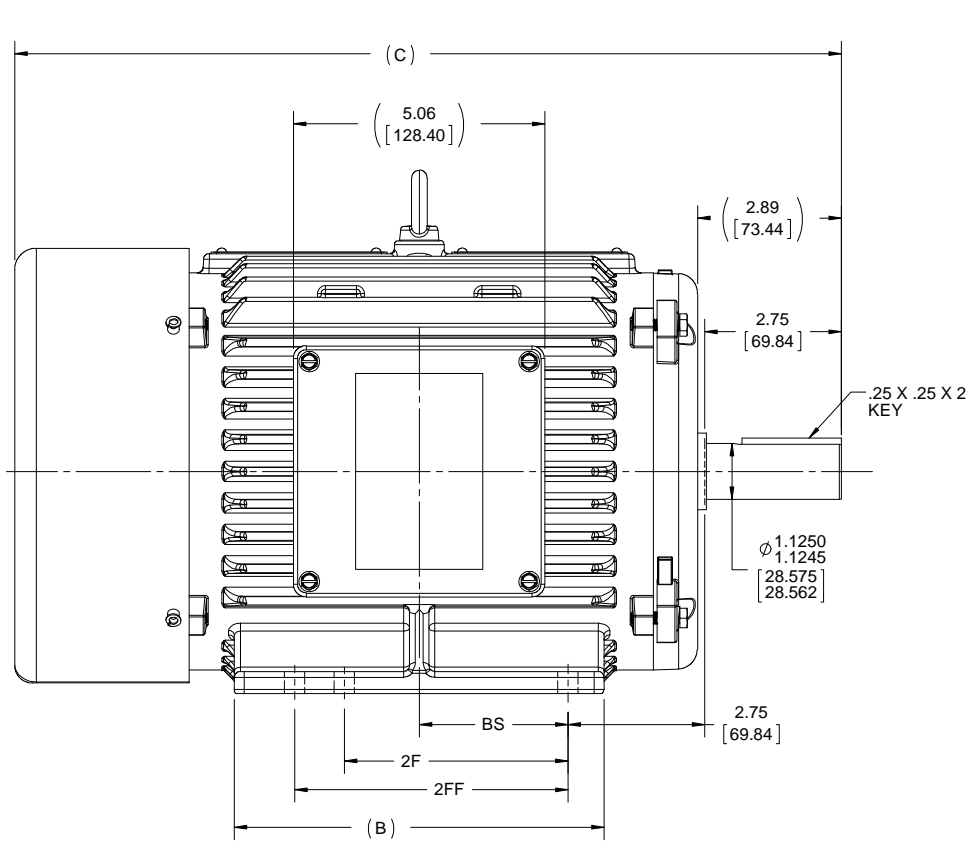
Output HP	10 Hp	Output KW	7.5 kW
Frequency	90 Hz	Voltage	460 V
Current	11.3 A	Speed	3600 rpm
Service Factor	1.15	Phase	3
Efficiency	94 %	Duty	Continuous
Insulation Class	F	Design Code	No Design Code
KVA Code	N/A	Frame	184T
Enclosure	Totally Enclosed Fan Cooled	Overload Protector	No
Ambient Temperature	40 °C	Drive End Bearing Size	6207
Opp Drive End Bearing Size	6207	UL	Recognized
CSA	Y	CE	N
IP Code	54		

Technical Specifications

Electrical Type	AC Permanent Magnet	Starting Method	Inverter Only
Poles	6	Rotation	Reversible
Mounting	Rigid Base	Motor Orientation	Horizontal
Drive End Bearing	Ball	Opp Drive End Bearing	Ball
Frame Material	Cast Iron	Shaft Type	T
Overall Length	16.43 in	Frame Length	9.42 in
Shaft Diameter	1.125 in	Shaft Extension	2.75 in
Assembly/Box Mounting	F1/F2 Capable		
Outline Drawing	520-00319-9419	Connection Diagram	NA

This is an uncontrolled document once printed or downloaded and is subject to change without notice. Date Created: 11/16/2018

DASH	FRAME	C	B	2F	2FF	BS
9419	182/184	16.63 [422.28]	7.44 [188.93]	4.50 [114.30]	5.50 [139.70]	2.99 [75.98]



- NOTES: (UNLESS OTHERWISE SPECIFIED)
1. ALL DIMENSIONS & TOLERANCES APPLY POST-FINISH OR PLATING. CRITICAL TO FUNCTION DIMENSIONS ARE INSIDE OVAL BORDER. QUERY SOLID MODEL (IGES) FOR COMPLETE PART DEFINITION.

DRAWING REVISION F	REVISION BY GNK	DATE 08/09/2018	TOLERANCES UNLESS OTHERWISE SPECIFIED: DEC. mm INCH ANGLE -X ±.25 [±0.10] ±7° 30' .XX ±0.50 [±0.020] .XXX ±0.130 [±0.0051] .XXXX ±0.0130 [±0.00051] REMOVE BURRS & BREAK SHARP EDGES: .08/.38 [0.03/0.15] X 45° CORNER FILLETS: R.50 [0.20] MACHINED SURFACES: 200 5.1 INCH SHOWN IN [BRACKETS]	DRAWN BY	Regal Beloit America, Inc.		
ECO ECO-0150486	APPROVED BY GNK	DATE 08/09/2018		DATE			
ECO DESCRIPTION DRAWING UPDATED COPYRIGHT REGAL BELOIT AMERICA, INC. ALL RIGHTS RESERVED. PROPRIETARY AND CONFIDENTIAL INFORMATION - THIS DOCUMENT IS THE PROPERTY OF REGAL BELOIT AMERICA, INC. (OWNER) AND CONTAINS OWNER'S PROPRIETARY INFORMATION. ANY PERSON, CORPORATION OR OTHER FIRM RECEIVING IT IS DEEMED, BY RECEIVING IT, TO AGREE THAT IT, AND/OR ANY PART OF IT, SHALL NOT BE DISCLOSED TO ANY PERSON, CORPORATION OR OTHER ENTITY, DUPLICATED, AND/OR USED, EXCEPT AS EXPRESSLY APPROVED IN WRITING IN ADVANCE BY OWNER. THIS DOCUMENT SHALL BE RETURNED TO OWNER UPON REQUEST. IT MAY BE SUBJECT TO CERTAIN RESTRICTIONS UNDER APPLICABLE EXPORT CONTROL LAWS AND REGULATIONS.				APPROVED BY	DESCRIPTION OUTLINE NOVAMAX, 182/184T, TEFC, RIGID		
				DATE	MATERIAL	PROCESS/FINISH	
				REFERENCE	SIZE B	DRAWING NUMBER 520-00319	SHEET 1 OF 1