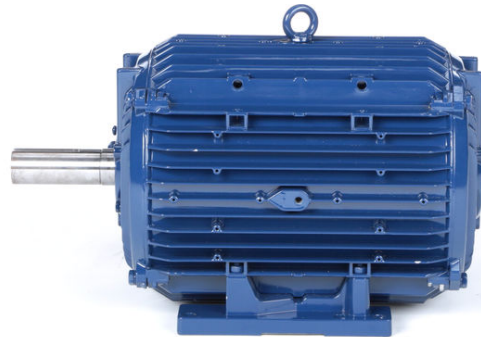


# PRODUCT INFORMATION PACKET

**marathon**<sup>®</sup>  
Motors

Model No: 215TPFAC10465  
Catalog No: NM2425  
12,1800,215T,TEFC,3/460  
NovaMAX - EC Permanent Magnet Motor



Regal and Marathon are trademarks of Regal Beloit Corporation or one of its affiliated companies.  
©2018 Regal Beloit Corporation, All Rights Reserved. MC017097E

**REGAL**<sup>®</sup>



### Nameplate Specifications

Output HP	<b>12 Hp</b>	Output KW	<b>9.0 kW</b>
Frequency	<b>90 Hz</b>	Voltage	<b>460 V</b>
Current	<b>15.0 A</b>	Speed	<b>1800 rpm</b>
Service Factor	<b>1.15</b>	Phase	<b>3</b>
Efficiency	<b>95.2 %</b>	Duty	<b>Continuous</b>
Insulation Class	<b>F</b>	Design Code	<b>No Design Code</b>
KVA Code	<b>N/A</b>	Frame	<b>215T</b>
Enclosure	<b>Totally Enclosed Fan Cooled</b>	Overload Protector	<b>No</b>
Ambient Temperature	<b>40 °C</b>	Drive End Bearing Size	<b>6308</b>
Opp Drive End Bearing Size	<b>6308</b>	UL	<b>Recognized</b>
CSA	<b>Y</b>	CE	<b>N</b>
IP Code	<b>43</b>		

### Technical Specifications

Electrical Type	<b>AC Permanent Magnet</b>	Starting Method	<b>Inverter Only</b>
Poles	<b>6</b>	Rotation	<b>Reversible</b>
Mounting	<b>Rigid Base</b>	Motor Orientation	<b>Horizontal</b>
Drive End Bearing	<b>Ball</b>	Opp Drive End Bearing	<b>Ball</b>
Frame Material	<b>Aluminum</b>	Shaft Type	<b>T</b>
Overall Length	<b>19.94 in</b>	Frame Length	<b>11.18 in</b>
Shaft Diameter	<b>1.375 in</b>	Shaft Extension	<b>3.38 in</b>
Assembly/Box Mounting	<b>F1/F2 Capable</b>		
Outline Drawing	<b>520-00503-1118</b>	Connection Diagram	<b>NA</b>

This is an uncontrolled document once printed or downloaded and is subject to change without notice. Date Created: 11/16/2018

4

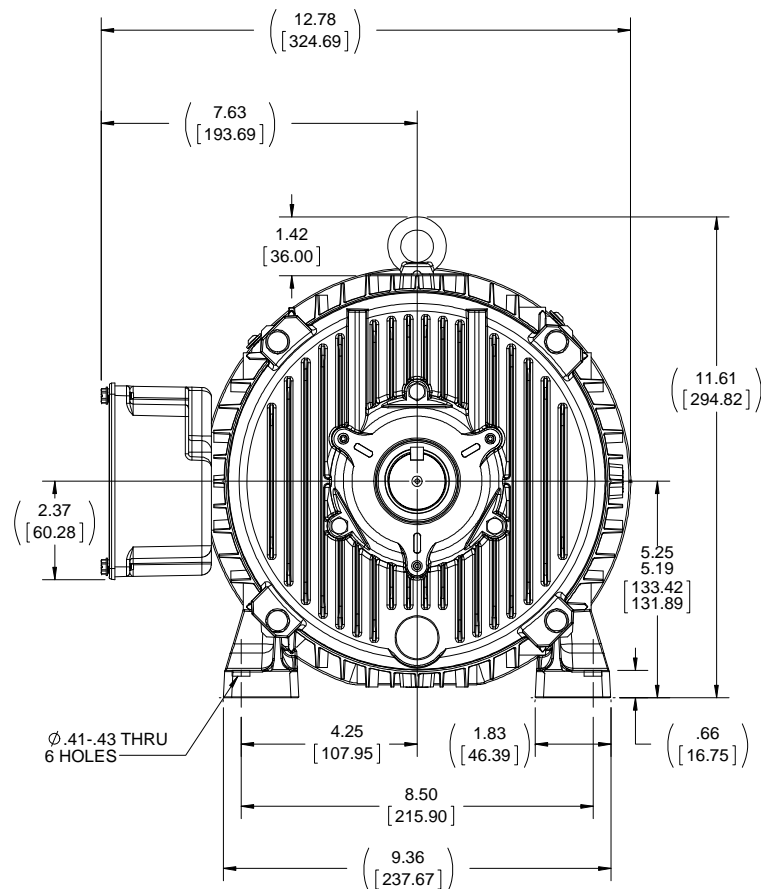
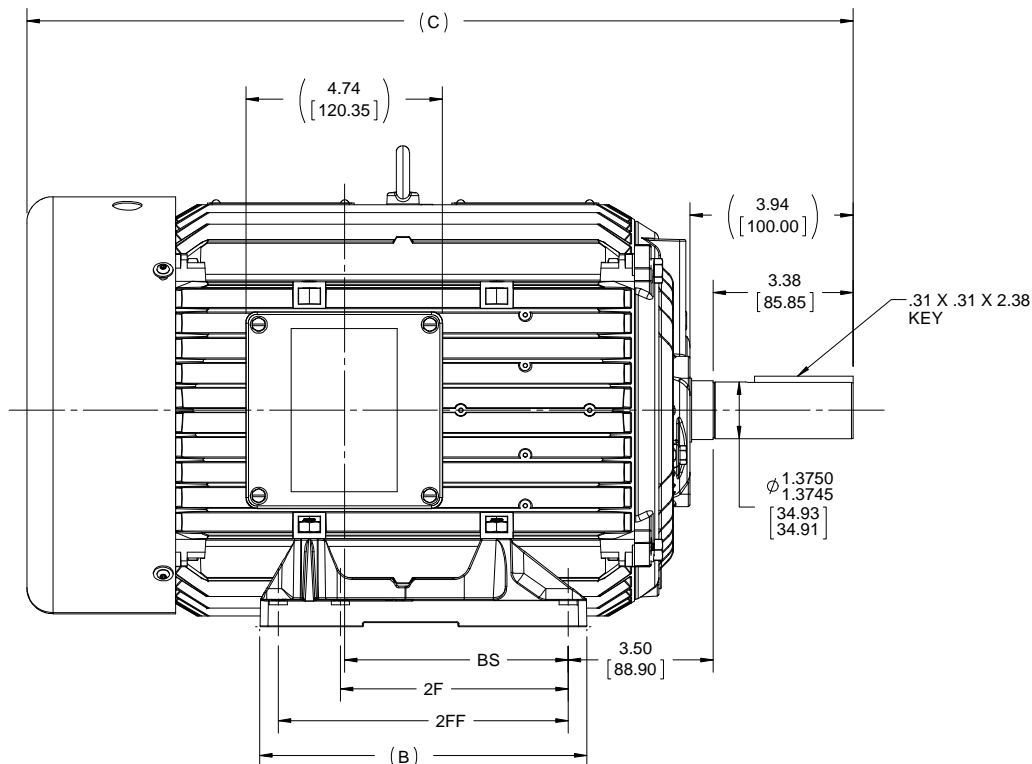
3

Uncontrolled Copy

2

1

DASH	FRAME	C	B	2F	2FF	BS
1118	213/215	19.94 [506.59]	7.90 [200.58]	5.50 [139.70]	7.00 [177.80]	5.40 [137.24]



NOTES: (UNLESS OTHERWISE SPECIFIED)

- ALL DIMENSIONS & TOLERANCES APPLY POST-FINISH OR PLATING.
- CRITICAL TO FUNCTION DIMENSIONS ARE INSIDE OVAL BORDER. QUERY SOLID MODEL (IGES) FOR COMPLETE PART DEFINITION.

DRAWING REVISION E	REVISION BY GNK	DATE 08/09/2018	<b>TOLERANCES UNLESS OTHERWISE SPECIFIED:</b> DEC.   mm    INCH   ANGLE .X     ±.25   [±0.10]   ±0.5° .XX   ±0.25   [±0.010] .XXX ±0.130   [±0.0051] .XXXX ±0.130   [±0.0051] <b>REMOVE BURRS &amp; BREAK SHARP</b> EDGES: .08/.38 [.003/.015] X 45° CORNER FILLETS: R.50 [.020] MACHINED SURFACES: 125/3.2 INCH SHOWN IN [BRACKETS]	DRAWN BY	Regal Beloit America, Inc.		
ECO ECO-0150544	APPROVED BY GNK	DATE 08/09/2018		DATE			
ECO DESCRIPTION <b>SHEET 1 DELETED</b> <small>COPYRIGHT REGAL BELOIT AMERICA, INC. ALL RIGHTS RESERVED. PROPRIETARY AND CONFIDENTIAL INFORMATION - THIS DOCUMENT IS THE PROPERTY OF REGAL BELOIT AMERICA, INC. (OWNER) AND CONTAINS OWNER'S PROPRIETARY INFORMATION. ANY PERSON, CORPORATION OR OTHER FIRM RECEIVING IT IS DEEMED, BY RECEIVING IT, TO AGREE THAT IT, AND/OR ANY PART OF IT, SHALL NOT BE DISCLOSED TO ANY PERSON, CORPORATION OR OTHER ENTITY, DUPLICATED, AND/OR USED, EXCEPT AS EXPRESSLY APPROVED IN WRITING IN ADVANCE BY OWNER. THIS DOCUMENT SHALL BE RETURNED TO OWNER UPON REQUEST. IT MAY BE SUBJECT TO CERTAIN RESTRICTIONS UNDER APPLICABLE EXPORT CONTROL LAWS AND REGULATIONS.</small>				APPROVED BY		DESCRIPTION <b>OUTLINE</b> NOVAMAX, 213/215T, TEFC, RIGID	
				DATE	MATERIAL	PROCESS/FINISH	
				REFERENCE	SIZE <b>B</b>	DRAWING NUMBER <b>520-00503</b>	SHEET <b>1 OF 1</b>