

# PRODUCT INFORMATION PACKET

Model No: 184TPNSC10320

Catalog No: NM1462

5 HP Permanent Magnet (PMAC) Motor, 3 phase, 1800 RPM, 460 V, 184TC Frame, TENV  
NEMA EC Permanent Magnet Motors





**Nameplate Specifications**

Output HP	<b>5 Hp</b>	Output KW	<b>3.7 kW</b>
Frequency	<b>90 Hz</b>	Voltage	<b>460 V</b>
Current	<b>5.7 A</b>	Speed	<b>3600 rpm</b>
Service Factor	<b>1.15</b>	Phase	<b>3</b>
Efficiency	<b>94 %</b>	Duty	<b>Continuous</b>
Insulation Class	<b>F</b>	Design Code	<b>No Design Code</b>
KVA Code	<b>N/A</b>	Frame	<b>184TC</b>
Enclosure	<b>Totally Enclosed Non Ventilated</b>	Thermal Protection	<b>No</b>
Ambient Temperature	<b>40 °C</b>	Drive End Bearing Size	<b>6207</b>
Opp Drive End Bearing Size	<b>6207</b>	UL	<b>Recognized</b>
CSA	<b>N</b>	CE	<b>N</b>
IP Code	<b>54</b>		

**Technical Specifications**

Electrical Type	<b>AC Permanent Magnet</b>	Starting Method	<b>Inverter Only</b>
Poles	<b>6</b>	Rotation	<b>Reversible</b>
Resistance Main	<b>0 Ohms</b>	Mounting	<b>Rigid Base</b>
Motor Orientation	<b>Horizontal</b>	Drive End Bearing	<b>Ball</b>
Opp Drive End Bearing	<b>Ball</b>	Frame Material	<b>Cast Iron</b>
Shaft Type	<b>T</b>	Shaft Diameter	<b>0.000 in</b>
Assembly/Box Mounting	<b>F1 ONLY</b>		

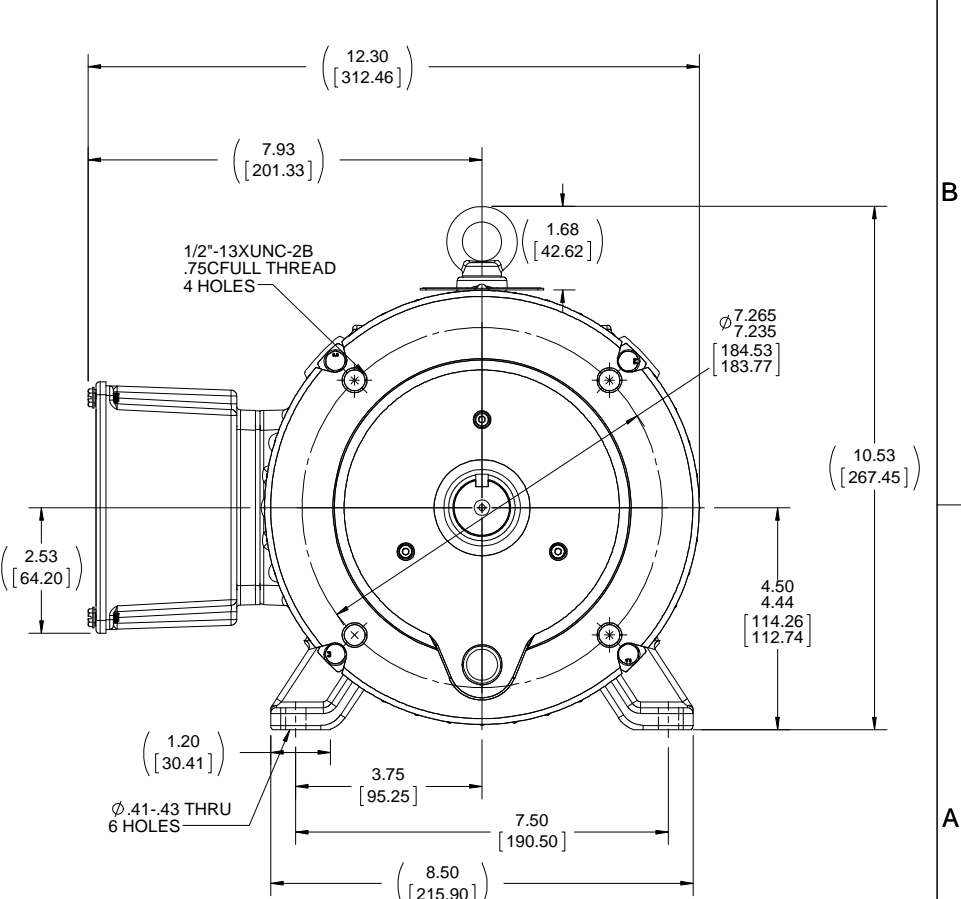
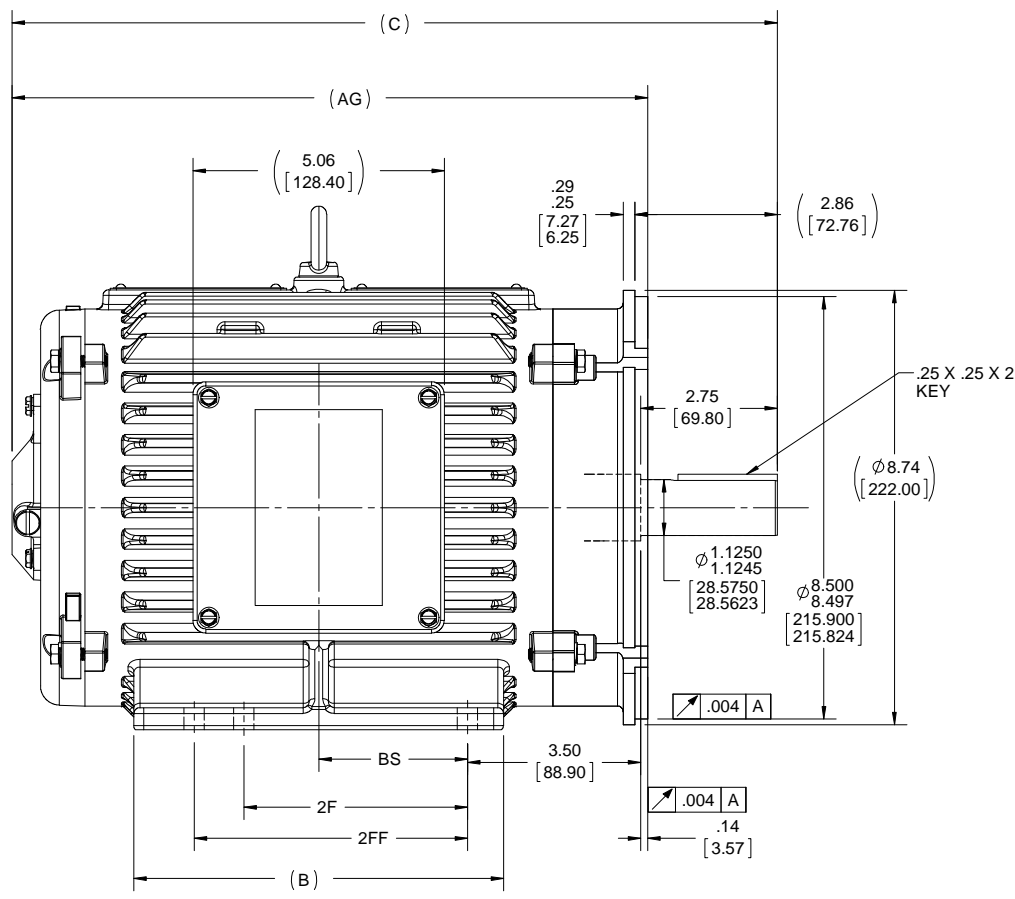
This is an uncontrolled document once printed or downloaded and is subject to change without notice. Date Created:04/11/2019

DASH	FRAME	C	B	2F	2FF	BS	AG
9419	182/184	15.40 [391.16]	7.44 [188.93]	4.50 [114.30]	5.50 [139.70]	2.99 [75.98]	12.79 [324.84]

Uncontrolled Copy

B

A



B

A

DRAWING REVISION A	REVISION BY	DATE	TOLERANCES UNLESS OTHERWISE SPECIFIED:
ECO ECO-0151022	APPROVED BY	DATE	DEC. mm INCH ANGLE -X ±.25 [±0.10] °0.5° .XX ±0.25 [±0.010] .XXX ±0.130 [±0.0051] .XXXX ±0.0130 [±0.00051]
ECO DESCRIPTION NEW DRAWING			REMOVE BURRS & BREAK SHARP EDGES: .08/.38 [0.03/0.15] X 45° CORNER FILLETS: R.50 [0.20] MACHINED SURFACES: 125 3.2 INCH SHOWN IN [BRACKETS]
<small>COPYRIGHT REGAL BELOIT AMERICA, INC. ALL RIGHTS RESERVED. PROPRIETARY AND CONFIDENTIAL INFORMATION - THIS DOCUMENT IS THE PROPERTY OF REGAL BELOIT AMERICA, INC. (OWNER) AND CONTAINS OWNER'S PROPRIETARY INFORMATION. ANY PERSON, CORPORATION OR OTHER FIRM RECEIVING IT IS DEEMED, BY RECEIVING IT, TO AGREE THAT IT, AND/OR ANY PART OF IT, SHALL NOT BE DISCLOSED TO ANY PERSON, CORPORATION OR OTHER ENTITY, DUPLICATED, AND/OR USED, EXCEPT AS EXPRESSLY APPROVED IN WRITING IN ADVANCE BY OWNER. THIS DOCUMENT SHALL BE RETURNED TO OWNER UPON REQUEST. IT MAY BE SUBJECT TO CERTAIN RESTRICTIONS UNDER APPLICABLE EXPORT CONTROL LAWS AND REGULATIONS.</small>			

DRAWN BY NK	DATE 8/21/2018
APPROVED BY GNK	DATE 8/21/2018
REFERENCE 520-00505	THIRD ANGLE PROJECTION

Regal Beloit America, Inc.	
DESCRIPTION OUTLINE NOVAMAX, 182/184TC, TEAO/TENV, RIGID	
MATERIAL	PROCESS/FINISH
SIZE B	DRAWING NUMBER 520-00321
	SHEET 1 OF 1

- NOTES: (UNLESS OTHERWISE SPECIFIED)
- ALL DIMENSIONS & TOLERANCES APPLY POST-FINISH OR PLATING.
  - CRITICAL TO FUNCTION DIMENSIONS ARE INSIDE OVAL BORDER. QUERY SOLID MODEL (IGES) FOR COMPLETE PART DEFINITION.

4

3

2

1