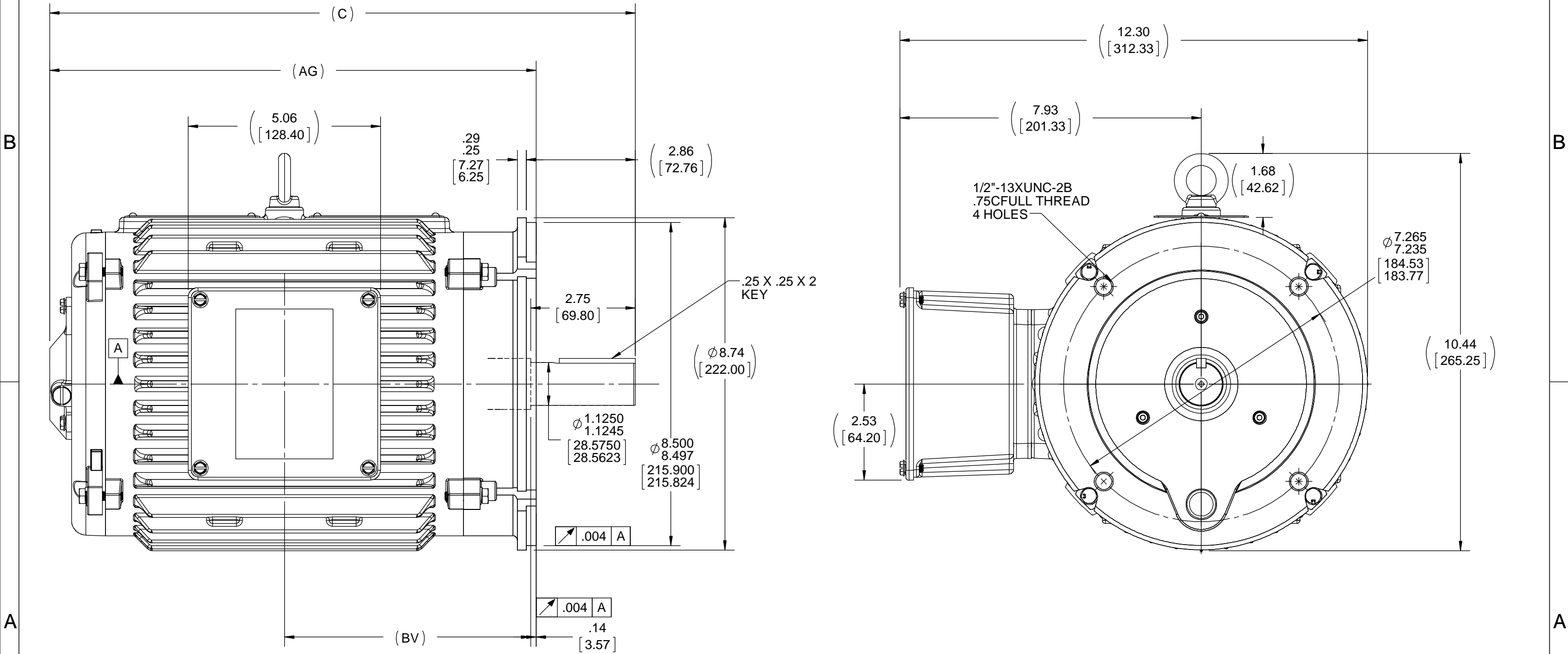


|      |         |                   |                  |                   |
|------|---------|-------------------|------------------|-------------------|
| DASH | FRAME   | C                 | BV               | AG                |
| 9419 | 182/184 | 15.40<br>[391.16] | 6.62<br>[168.12] | 12.79<br>[324.84] |

Uncontrolled Copy



- NOTES: (UNLESS OTHERWISE SPECIFIED)
- ALL DIMENSIONS & TOLERANCES APPLY POST- FINISH OR PLATING.
  - CRITICAL TO FUNCTION DIMENSIONS ARE INSIDE OVAL BORDER. QUERY SOLID MODEL (IGES) FOR COMPLETE PART DEFINITION.

|  |             |      |   |                        |  |
|--|-------------|------|---|------------------------|--|
| DRAWING REVISION<br>A  | REVISION BY | DATE | TOLERANCES UNLESS OTHERWISE SPECIFIED:<br>DEC.    mm    INCH    ANGLE<br>.X    ±2.5    [±0.10]    ±0.5°<br>.XX    ±0.25    [±0.010]<br>.XXX    ±0.130    [±0.0051]<br>.XXXX    ±0.0130    [±0.00051]<br>REMOVE BURRS & BREAK SHARP<br>EDGES: .08/.38 [.003/.015] X 45°<br>CORNER FILLETS: R.50 [.020]<br>MACHINED SURFACES: 125 $\sqrt{\text{mm}}$ 3.2 $\sqrt{\text{mm}}$<br>INCH SHOWN IN [BRACKETS] | DRAWN BY<br>NK         | Regal Beloit America, Inc.                                     |
| ECO<br>ECO-0159509   | APPROVED BY | DATE |   | DATE<br>01-07-2019     |  |
| ECO DESCRIPTION<br>NEW DRAWING<br>COPYRIGHT REGAL BELOIT AMERICA, INC. ALL RIGHTS RESERVED. PROPRIETARY AND CONFIDENTIAL INFORMATION - THIS DOCUMENT IS THE PROPERTY OF REGAL BELOIT AMERICA, INC. ("OWNER") AND CONTAINS OWNER'S PROPRIETARY INFORMATION. ANY PERSON, CORPORATION OR OTHER FIRM RECEIVING IT IS DEEMED, BY RECEIVING IT, TO AGREE THAT IT, AND/OR ANY PART OF IT, SHALL NOT BE DISCLOSED TO ANY PERSON, CORPORATION OR OTHER ENTITY, DUPLICATED, AND/OR USED, EXCEPT AS EXPRESSLY APPROVED IN WRITING IN ADVANCE BY OWNER. THIS DOCUMENT SHALL BE RETURNED TO OWNER UPON REQUEST. IT MAY BE SUBJECT TO CERTAIN RESTRICTIONS UNDER APPLICABLE EXPORT CONTROL LAWS AND REGULATIONS. |             |      |   | APPROVED BY<br>RG      | DESCRIPTION<br>OUTLINE<br>NOVAMAX, 182/184TC, TEAO/TENV, ROUND |
|  |             |      |   | DATE<br>01-07-2019     | MATERIAL   |
|  |             |      |   | REFERENCE<br>520-00321 | PROCESS/FINISH   |
|  |             |      |   | THIRD ANGLE PROJECTION | SIZE<br>B  |
|  |             |      |   |                        | DRAWING NUMBER<br>520-00323                                    |
|  |             |      |   |                        | SHEET<br>1 OF 1  |