

# PRODUCT INFORMATION PACKET



Model No: 215TBDW17003  
Catalog No: Z315A  
15,3600,DP,215TZ,1/60/230  
Crop Dryer



Regal and Marathon are trademarks of Regal Beloit Corporation or one of its affiliated companies.

©2018 Regal Beloit Corporation, All Rights Reserved. MC017097E





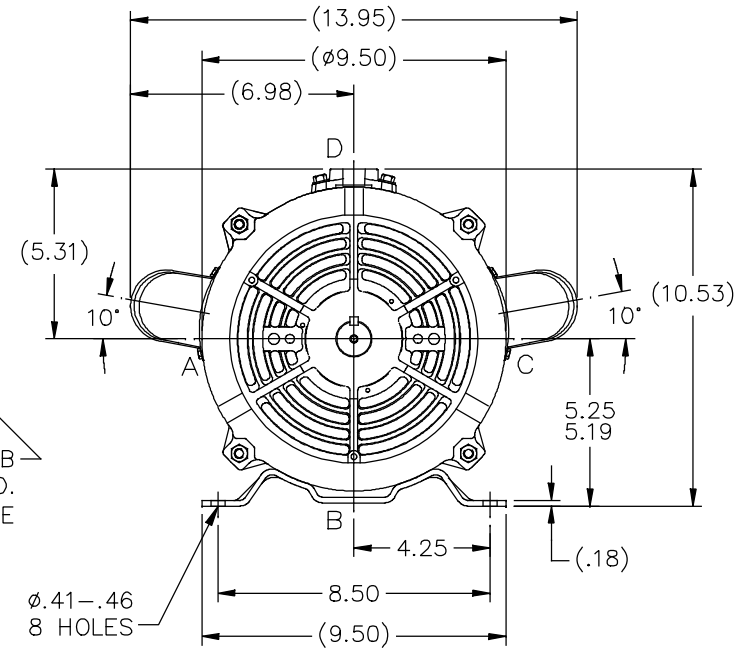
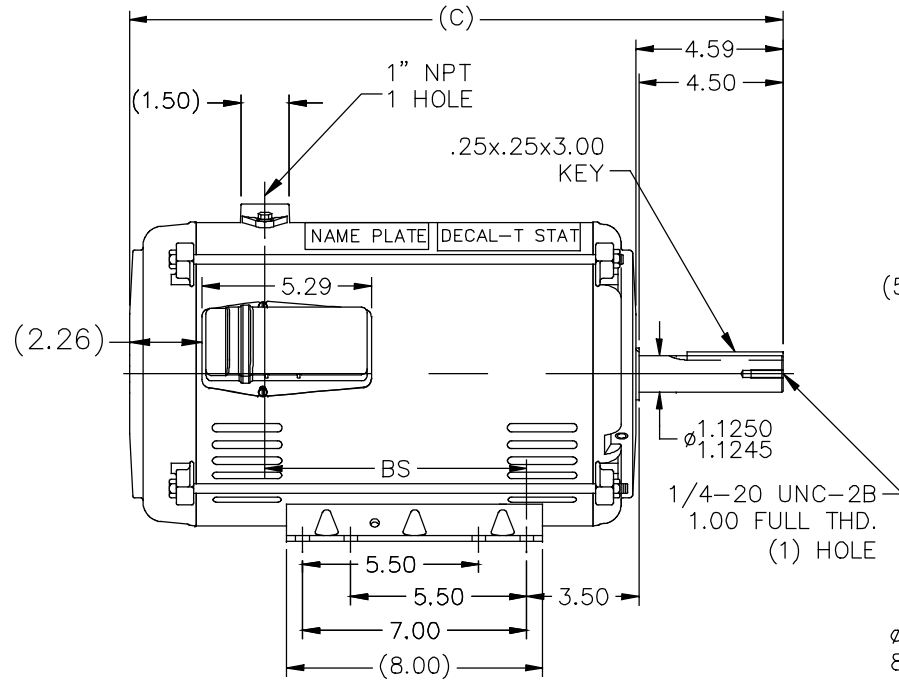
## Nameplate Specifications

Output HP	<b>10 Hp</b>	Output KW	<b>7.5 kW</b>
Frequency	<b>60 Hz</b>	Voltage	<b>230 V</b>
Current	<b>39.5 A</b>	Speed	<b>3520 rpm</b>
Service Factor	<b>1.15</b>	Phase	<b>1</b>
Efficiency	<b>85.5 %</b>	Duty	<b>Continuous</b>
Insulation Class	<b>F</b>	Design Code	<b>L</b>
KVA Code	<b>G</b>	Frame	<b>215TZ</b>
Enclosure	<b>Drip Proof</b>	Overload Protector	<b>No</b>
Ambient Temperature	<b>40 °C</b>	Drive End Bearing Size	<b>6307</b>
Opp Drive End Bearing Size	<b>6206</b>	UL	<b>Recognized</b>
CSA	<b>Y</b>	CE	<b>N</b>
IP Code	<b>12</b>		

## Technical Specifications

Electrical Type	<b>Capacitor Start Capacitor Run</b>	Starting Method	<b>Across The Line</b>
Poles	<b>2</b>	Rotation	<b>Selective Counterclockwise</b>
Mounting	<b>Rigid base</b>	Motor Orientation	<b>HORIZONTAL</b>
Drive End Bearing	<b>BALL</b>	Opp Drive End Bearing	<b>BALL</b>
Frame Material	<b>Rolled Steel</b>	Shaft Type	<b>Single Special Extension</b>
Overall Length	<b>20.42 in</b>	Frame Length	<b>12.40 in</b>
Shaft Diameter	<b>1.125 in</b>	Shaft Extension	<b>4.59 in</b>
Assembly/Box Mounting	<b>F3</b>		
Outline Drawing	<b>SS87934-1240</b>	Connection Diagram	<b>EE9048PH</b>


SS87934



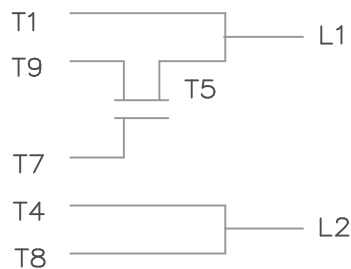
DASH	FR.	C	BS	MOUNTING
1240	213/15T	20.42	8.18	

## NOTES:

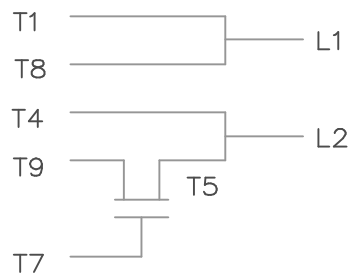
- NAMEPLATE TO BE READ FROM 'A' SIDE OF MOTOR.
- SEE MODEL FOR LEAD LENGTH.

9	DRAWING UPDATED PER ECR-0144149	MVG 11/13/17	ST	TOLERANCES UNLESS SPECIFIED	 <b>Regal Beloit America, Inc.</b>	DRAWN MJD 08-24-1999
8	UPDATED DECAL LOCATION	MVG 06/30/17	DEC.	INCHES		CHK ML 08-25-1999
7	DRAWING UPDATED PER ECR-0132121	MVG 05/08/2017	.X	±.1	<b>TITLE OUTLINE - DR.PR.</b> <b>210T FR. - BB - SS - SINGLE PHASE</b>	APPD DR 08-25-1999
6	REPLACED ADAPTER PLATE W/LEESON PLATE 07-1734	MSG 11-14-2008	MSG	.XX		SCALE 1=5
5	UPDATED DRAWING	TJW 04/30/2007	.XXX	±.005	<b>MAT'L.</b> <b>FINISH</b>	REF
4	UPDATED TO CURRENT STANDARDS	RLW 07-22-2003	.XXXX	±.0005		FMF
NO.	REVISION	BY & DATE	CHK	ANG	±7'30"	PREV
THIS DRAWING IN DESIGN AND DETAIL IS OUR PROPERTY AND MUST NOT BE USED EXCEPT IN CONNECTION WITH OUR WORK ALL RIGHTS OF DESIGN AND INVENTION ARE RESERVED THIS IS AN ELECTRONICALLY GENERATED DOCUMENT - DO NOT SCALE THIS PRINT				RFP	CAD FILE ss87934	SIZE A
				DIST LB		DRAWING NO. SS87934
						PAGE OF 9
						REV. 9

C.W. ROTATION

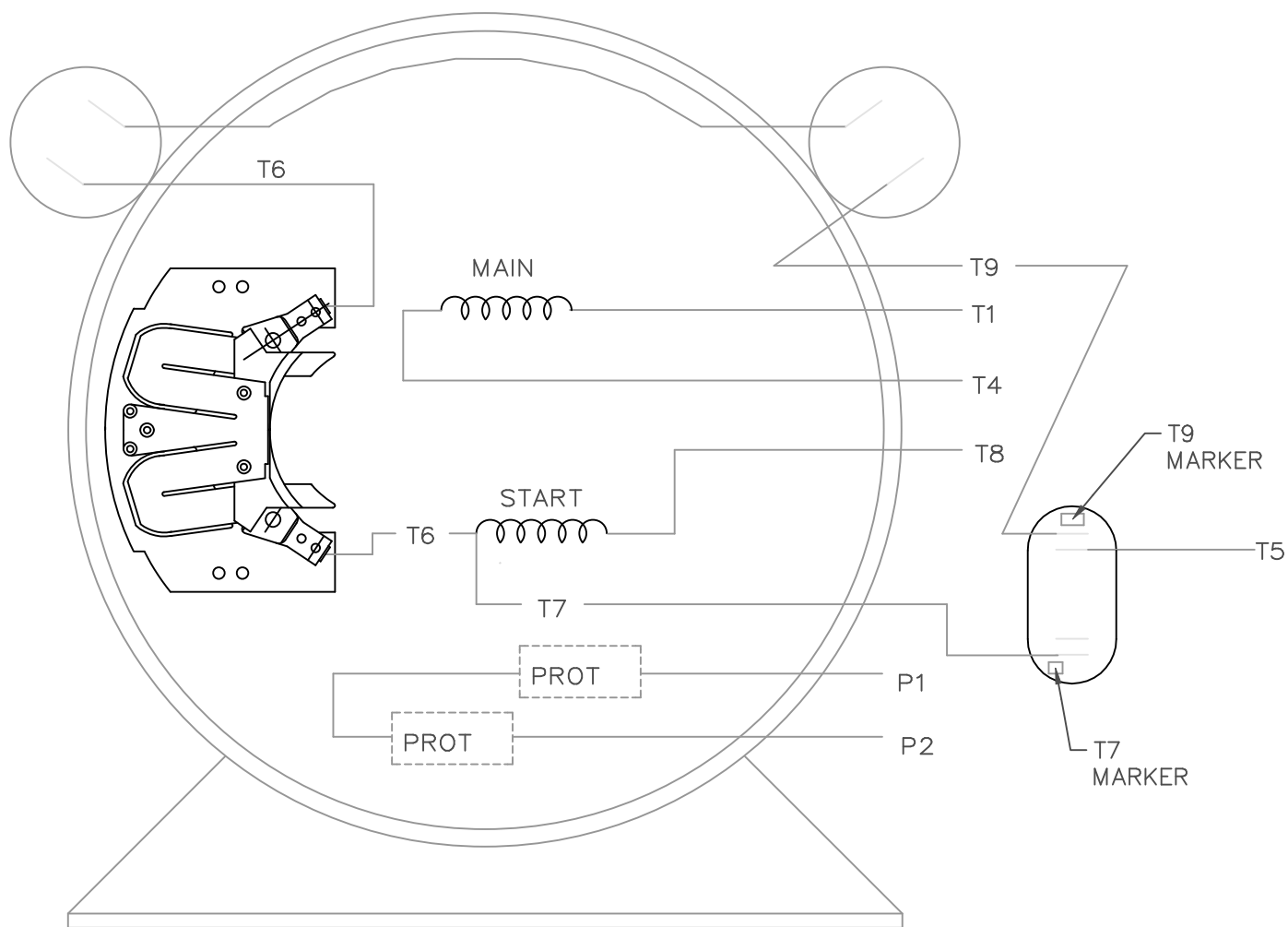


C.C.W. ROTATION




SINGLE VOLTAGE  
CAPACITOR START  
CAPACITOR RUN  
REVERSIBLE

CONNECT:  
START CAPACITORS IN SERIES



VIEW OF TERMINAL END

			TOLERANCES UNLESS SPECIFIED			ELECTRIC MOTORS GEARMOTORS AND DRIVES	DRAWN MJD 08/24/99		
			DEC.	INCHES			CHK	ML	08/25/99
			.X	±.1			APPD	DR	08/26/99
03	UPDATED TO CURRENT STANDARDS	RLW 7/22/03	.XX	±.01	TITLE	CONNECTION DIAGRAM	SCALE 1=1		
02	T5 WAS T9 @ RUN CAP CN 27700-866	MJD 09/27/99	.XXX	±.005			REF		
01	NEW DRAWING MU26425	MJD 08/26/99	.XXXX	±.0005	MAT'L.		FMF		
NO.	REVISION	BY & DATE	CHK	ANG			PREV		
THIS DRAWING IN DESIGN AND DETAIL IS OUR PROPERTY AND MUST NOT BE USED EXCEPT IN CONNECTION WITH OUR WORK ALL RIGHTS OF DESIGN AND INVENTION ARE RESERVED THIS IS AN ELECTRONICALLY GENERATED DOCUMENT - DO NOT SCALE THIS PRINT			RFP		CAD FILE	EE9048PH	SIZE	DRAWING NO.	
			DIST	WA-LB-WP-LM-BR			A	A- EE9048PH	
									03