



The Timken Company

4500 Mt Pleasant St. NW

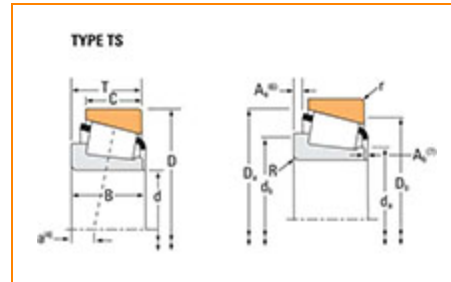
N. Canton, OH 44720

Phone: (234) 262-3000

E-Mail: CustomerCAD@timken.com • **Web site:** www.timken.com

Part Number 67820, Tapered Roller Bearings - Single Cups - Imperial

This is the most basic and most widely used type of tapered roller bearing. It consists of two main separable parts: the cone (inner ring) assembly and the cup (outer ring). It is typically mounted in opposing pairs on a shaft.



[Specifications](#) | [Dimensions](#) | [Abutment and Fillet Dimensions](#) | [Factors](#)

Specifications

Series	67800
Cup Part Number	67820
Design Units	Imperial

Dimensions

D - Cup Outer Diameter	10.5 in 266.7 mm
C - Cup Width	1.5 in 38.1 mm



Abutment and Fillet Dimensions

r - Cup Backface "To Clear" Radius¹	0.130 in 3.30 mm
Da - Cup Frontface Backing Diameter	10.25 in 259.10 mm
Db - Cup Backface Backing Diameter	9.69 in 246.13 mm

Factors

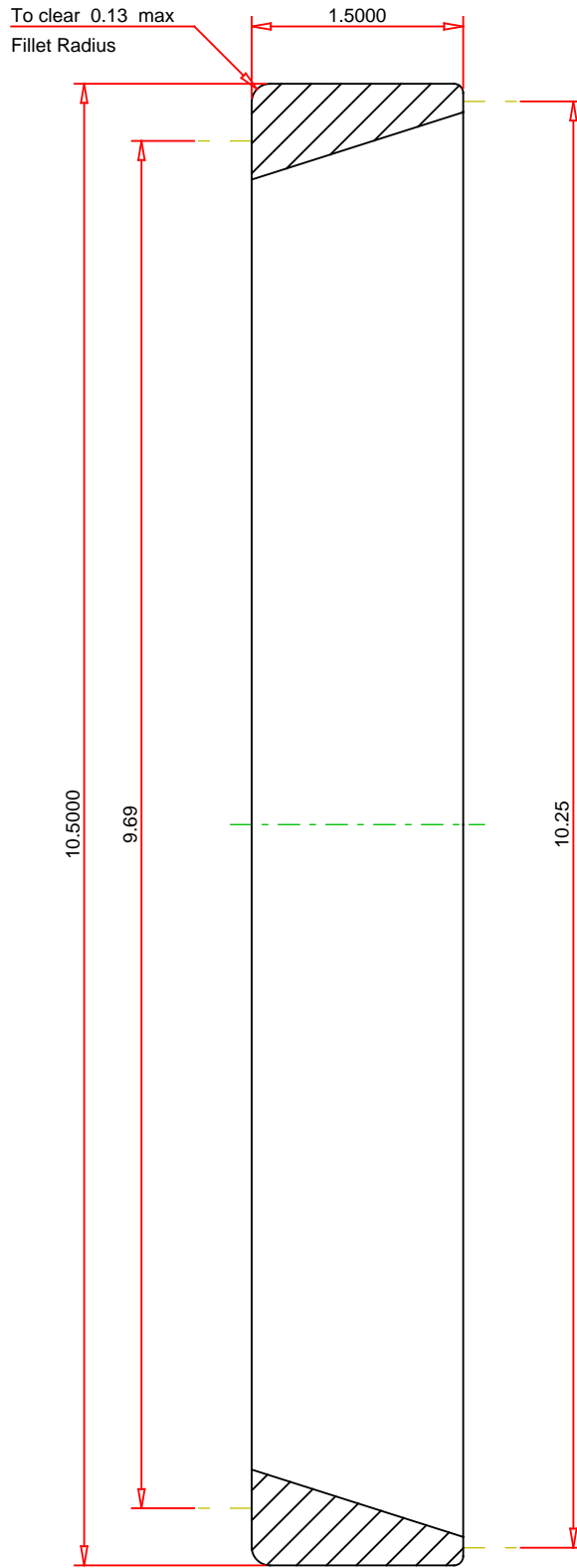
e - ISO Factor²	0.48
Y - ISO Factor³	1.26
Cg - Geometry Factor⁴	0.131

¹ These maximum fillet radii will be cleared by the bearing corners.

² These factors apply for both inch and metric calculations. Consult your Timken representative for instruction on use.

³ These factors apply for both inch and metric calculations. Consult your Timken representative for instruction on use.

⁴ Geometry constant for Lubrication Life Adjustment Factor a3l.



IMPERIAL UNITS

TIMKEN®

67820
Tapered Roller Bearings - Single Cups - Imperial

THE TIMKEN COMPANY
NORTH CANTON, OHIO USA

Every reasonable effort has been made to ensure the accuracy of the information contained in this writing, but no liability is accepted for errors, omissions or for any other reason.

FOR DISCUSSION ONLY