


The Timken Company

4500 Mt Pleasant St. NW

N. Canton, OH 44720

Phone: (234) 262-3000

E-Mail: CustomerCAD@timken.com • **Web site:** www.timken.com

Part Number QACW10A200S, Single Concentric Piloted Flange Cartridge



[Specifications](#) | [Dimensions](#) | [Radial and Thrust Factors](#) | [Engineering Seal Speed](#) | [Engineering Bearing Attributes](#) | [Engineering Internal Radial Clearance](#)

Specifications

Engineering Group	Mounted Bearing
Bearing Number	22210
Shaft Size	2 in
Shaft Size Type	Imperial
Full Timken Part Number	QACW10A200SB QACW10A200SC QACW10A200SEB QACW10A200SEC QACW10A200SEM QACW10A200SEN QACW10A200SEO QACW10A200SET QACW10A200SM QACW10A200SMLJ QACW10A200SN QACW10A200SO QACW10A200ST



Locking Style	Single Concentric
----------------------	-------------------

Housing Construction	Piloted Flange Cartridge
-----------------------------	--------------------------

UPC Code	0883450036405
	0883450036412
	0883450036436
	0883450036443
	0883450036450
	0883450036467
	0883450036474
	0883450036481
	0883450193825
	0883450193986
	0883450270991
0883450271158	
0883450472517	

Dimensions

Dimension BC	5.38 in 136.7 mm
---------------------	---------------------

Dimension B Exp	1.57 in 39.9 mm
------------------------	--------------------

Dimension B Fix	1.52 in 38.6 mm
------------------------	--------------------

Dimension C	2.88 in 73.2 mm
--------------------	--------------------

Dimension D	4.47 in 113.5 mm
--------------------	---------------------

Dimension E	3.8 in 96.5 mm
--------------------	-------------------

Dimension F	6.38 in 162.1 mm
--------------------	---------------------

Dimension G	4.5 in 114.3 mm
--------------------	--------------------

Dimension H	0.38 in 9.7 mm
Dimension J (Bolt Size)	0.438 in 10 mm
Dimension KA	1 in 25.4 mm
Dimension L Exp	3.07 in 78 mm
Dimension L Fix	3.02 in 76.7 mm
Dimension M	1.87 in 47.5 mm
Dimension N	1.5 in 38.1 mm
Dimension RA	0.15 in 3.8 mm
Dimension SA	2.87 in 72.9 mm

Radial and Thrust Factors

C0 - Static Load	26600 lbf 118000 N
C - Dynamic Load (Basic)	26300 lbf 117000 N
e - Geometry Factor	0.24
Y1 - Geometry Factor	2.84
Y2 - Geometry Factor	4.23

Engineering Seal Speed

Oil Lubrication - M/N Seal	2400 rpm
-----------------------------------	----------

Oil Lubrication - T Seal	4200 rpm
---------------------------------	----------

Oil Lubrication - B/C/O Seal	1800 rpm
-------------------------------------	----------

Grease Lubrication - M/N Seal	2400 rpm
--------------------------------------	----------

Grease Lubrication - T Seal	3550 rpm
------------------------------------	----------

Grease Lubrication - B/C/O Seal	1800 rpm
--	----------

Engineering Bearing Attributes

Float	0.050 in 1.270 mm
--------------	----------------------

Shaft Tolerance	0.0015 in 0.038 mm
------------------------	-----------------------

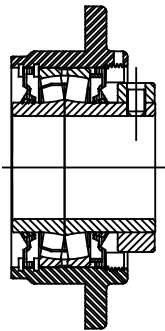
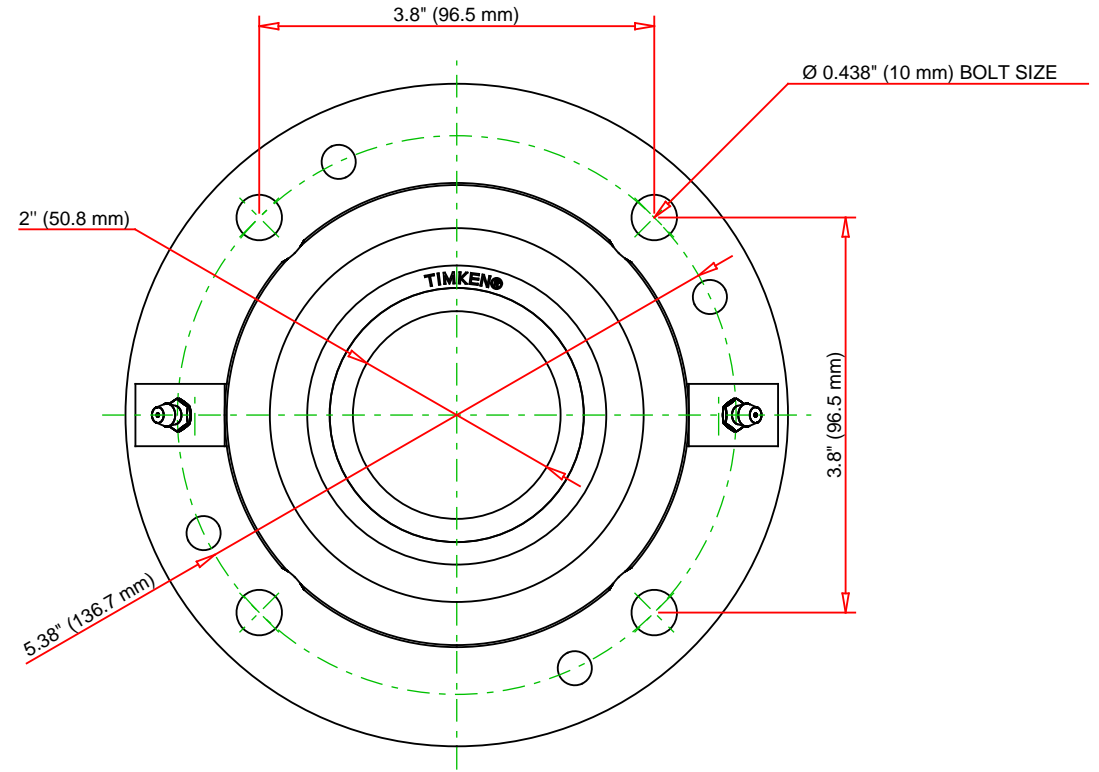
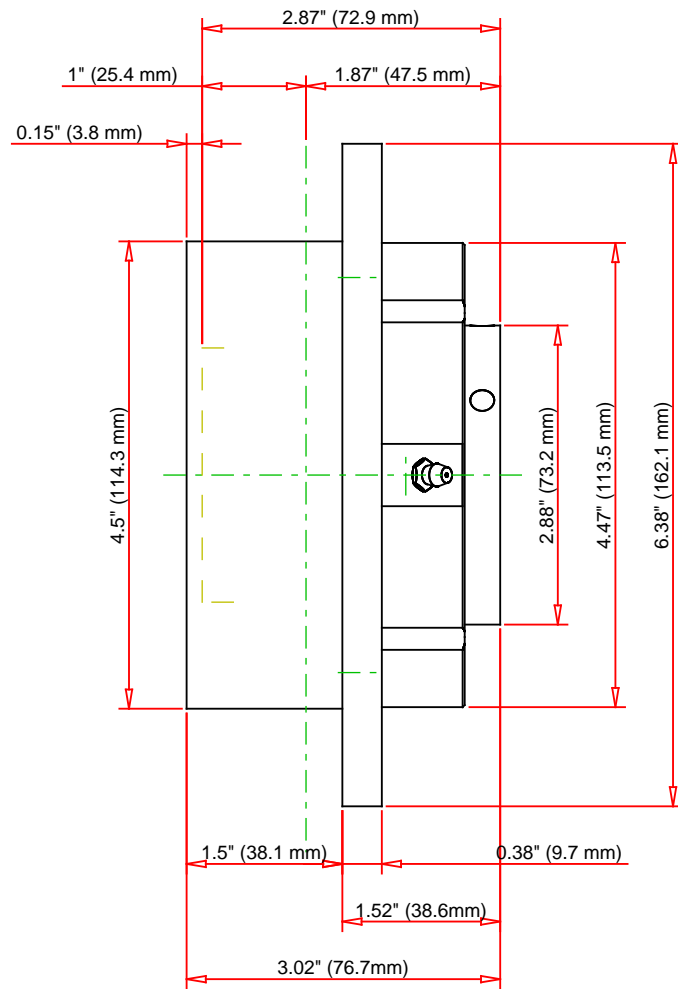
Engineering Internal Radial Clearance

Eng Internal Radial Clearance - Min	0.0016
--	--------

Eng Internal Radial Clearance - Max	0.0026
--	--------

Pre Install Clearance Min	0.0016 in 0.040 mm
----------------------------------	-----------------------

Pre Install Clearance Max	0.0026 in 0.065 mm
----------------------------------	-----------------------



Note: Section View not to Scale

C - Dynamic Load	26300	lbf	117000	N
C0 - Static Load	26600	lbf	118000	N
Weight	10	lb	4.5	kg
Max. Speed T-Seals & Grease	3550	rpm		
Rad. Clearance - Max.	0.0026			

TIMKEN

THE TIMKEN COMPANY
NORTH CANTON, OHIO USA

QACW10A200S

Single Concentric Piloted Flange
Cartridge

Every reasonable effort has been made to ensure the accuracy of the information contained in this writing, but no liability is accepted for errors, omissions or for any other reason.

FOR DISCUSSION ONLY