

BALDOR • RELIANCE

Customer information packet

35X743Q186G1

.5HP, 1750RPM, 3PH, 60HZ, 56C, 3516M, XPFC, F1

Class - CLI GP C,D; CLII GP F,G

Division - Division I

Specifications

Enclosure	XPFC
Frame	56C
Frame Material	Steel
Frequency	60.00 Hz
Haz Area Class and Group	CLI GP C,D; CLII GP F,G
Haz Area Division	Division I
Motor Letter Type	Three Phase
Output @ Frequency	.500 HP @ 60 HZ
Phase	3
Synchronous Speed @ Frequency	1800 RPM @ 60 HZ
Voltage @ Frequency	460.0 V @ 60 HZ 230.0 V @ 60 HZ
Agency Approvals	CSA UL UR
Ambient Temperature	40 °C
Auxillary Box	No Auxillary Box
Auxillary Box Lead Termination	None
Base Indicator	Rigid
Bearing Grease Type	Polyrex EM (-20F +300F)
Blower	None
Constant Torque Speed Range	6
Current @ Voltage	.800 A @ 460.0 V 1.600 A @ 230.0 V
Design Code	B
Drip Cover	No Drip Cover
Duty Rating	CONT
Efficiency @ 100% Load	82.5 %
Electrically Isolated Bearing	Not Electrically Isolated
Feedback Device	NO FEEDBACK
Front Face Code	Standard
Front Shaft Indicator	None

Part detail

Revision	L
Type	AC
Mech. spec.	35X743
Base	
Status	NLA/A
Elec. spec.	35WQG186
Layout	35LYX743
Eff. date	05-02-2024
CD Diagram	CD0005
Poles	04
Leads	9#18
Proprietary	False
Created date	10-10-2008

Haz Area Temp Code	T3C
Heater Indicator	No Heater
High Voltage Full Load Amps	0.8 a
Insulation Class	F
Inverter Code	Inverter Duty
KVA Code	M
Lifting Lugs	No Lifting Lugs
Locked Bearing Indicator	Locked Bearing
Max Speed	2700 rpm
Motor Lead Exit	Ko Box
Motor Lead Quantity/Wire Size	9 @ 18 AWG
Motor Lead Termination	Flying Leads
Motor Standards	NEMA
Motor Type	3516M
Mounting Arrangement	F1
Number of Poles	4
Overall Length	14.31 IN
Power Factor	72
Product Family	Hazardous Location Motor
Pulley End Bearing Type	Ball
Pulley Face Code	C-Face
Pulley Shaft Indicator	Standard
Rodent Screen	None
Service Factor	1.00
Shaft Diameter	0.625 IN
Shaft Extension Location	Pulley End
Shaft Ground Indicator	No Shaft Grounding
Shaft Rotation	Reversible
Shaft Slinger Indicator	Shaft Slinger
Speed	1750 rpm
Speed Code	Single Speed
Starting Method	Direct on line
Thermal Device - Bearing	None
Thermal Device - Winding	Normally Closed Thermostat

Vibration Sensor Indicator	No Vibration Sensor
Winding Thermal 1	None
Winding Thermal 2	None

Nameplate

NP0681XPSL									
NO.				CC					
S/N				TEMP CODE	T3C				
SPEC.	35X743Q186G1			INV.TYPE	PWM				
CAT.NO.				C HP FR	60	C HP TO	90		
HP	.5			CT HZ FROM	6	CT HZ TO	60		
VOLTS	230/460			VT HZ FROM	6	VT HZ TO	60		
AMPS	1.6/.8		MAG CUR	1/.5					
RPM	1750		MX RPM	2700					
HZ	60	PH	3	CL	F	NOM.EFF.	82.5		
SER.F.	1.00	DES	B	SL HZ	1.8	WK2	0.1		
FRAME	56C	RATING	40C AMB-CONT						
	55C RISE								

AC Induction Motor Performance Data

Record # 31539

Typical performance - not guaranteed values

Winding: 35WGQ186-R005		Type: 3516M		Enclosure: XPFC	
Nameplate Data			460 V, 60 Hz: High Voltage Connection		
Rated Output (HP)	.5	Full Load Torque	1.5 LB-FT		
Volts	230/460	Start Configuration	direct on line		
Full Load Amps	1.6/.8	Breakdown Torque	6.2 LB-FT		
R.P.M.	1750	Pull-up Torque	3.4 LB-FT		
Hz	60 Phase	3	Locked-rotor Torque	4.2 LB-FT	
NEMA Design Code	B KVA Code	M	Starting Current	6.3 A	
Service Factor (S.F.)		1	No-load Current	0.47 A	
NEMA Nom. Eff.	82.5 Power Factor	72	Line-line Res. @ 25°C	35.4 Ω	
Rating - Duty	40C AMB-CONT		Temp. Rise @ Rated Load		

Load Characteristics 460 V, 60 Hz, 0.5 HP

% of Rated Load	25	50	75	100	125	150
Power Factor	36	53	67	73	78	77
Efficiency	64.8	76.6	81.2	82.3	82.9	82.3
Speed	1787	1776	1766	1754	1741	1728
Line amperes	0.51	0.58	0.65	0.78	0.9	1.1

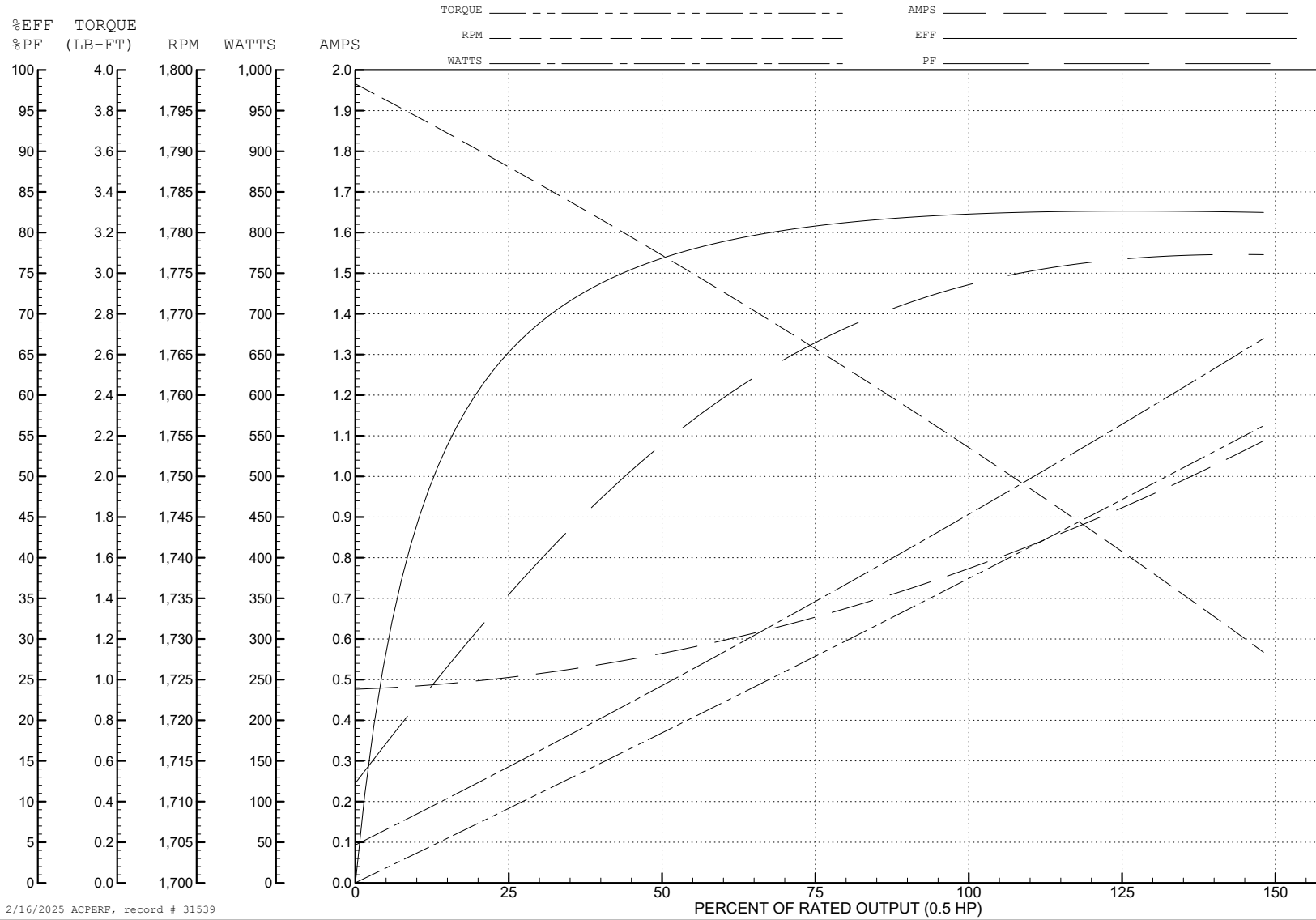
ABB Motors and Mechanical Inc.

WINDING # 35WGQ186

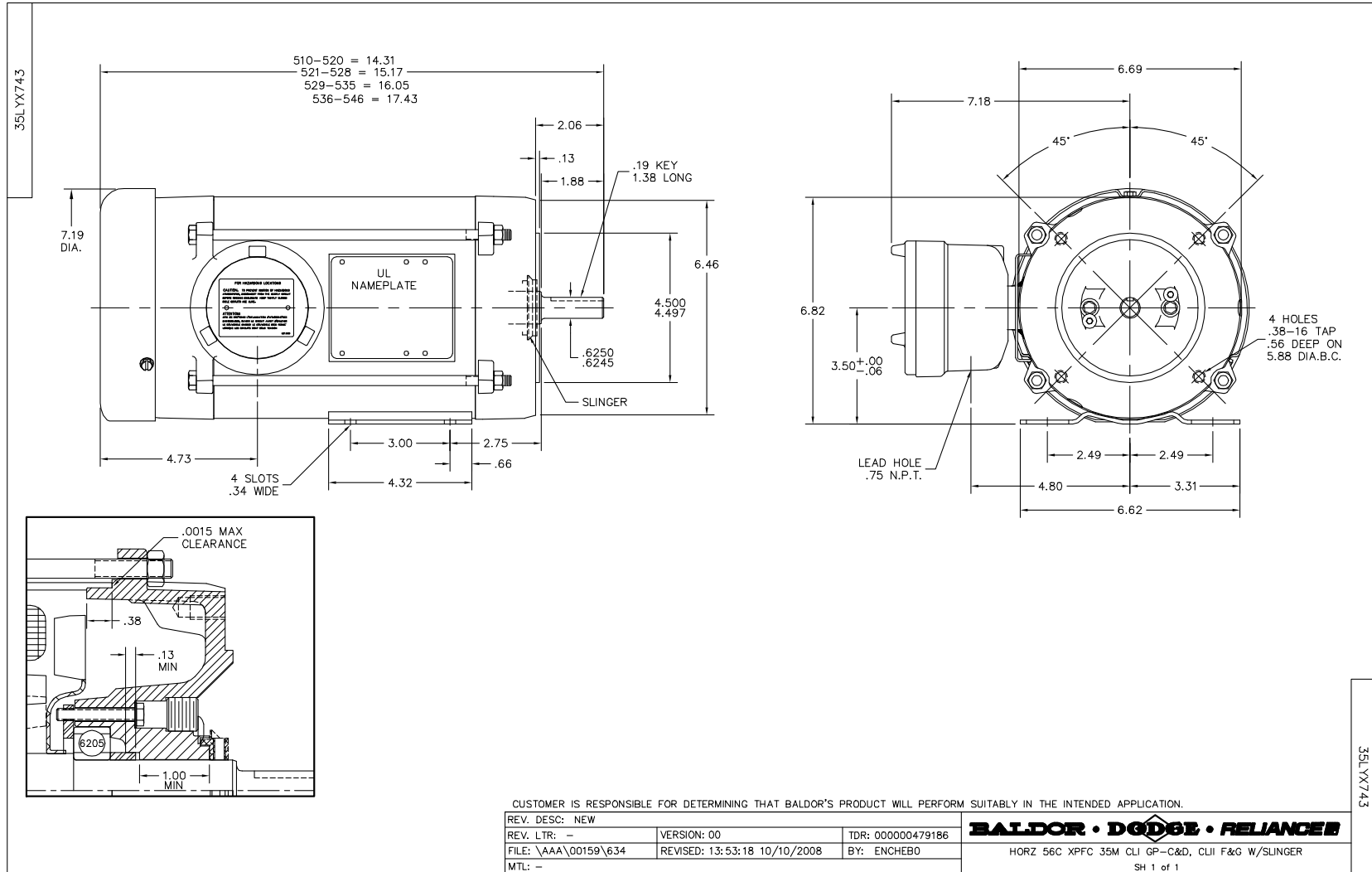
0.5 HP 3 PH 60 HZ 1750 RPM 460 V 3516M

Typical performance - not guaranteed values.

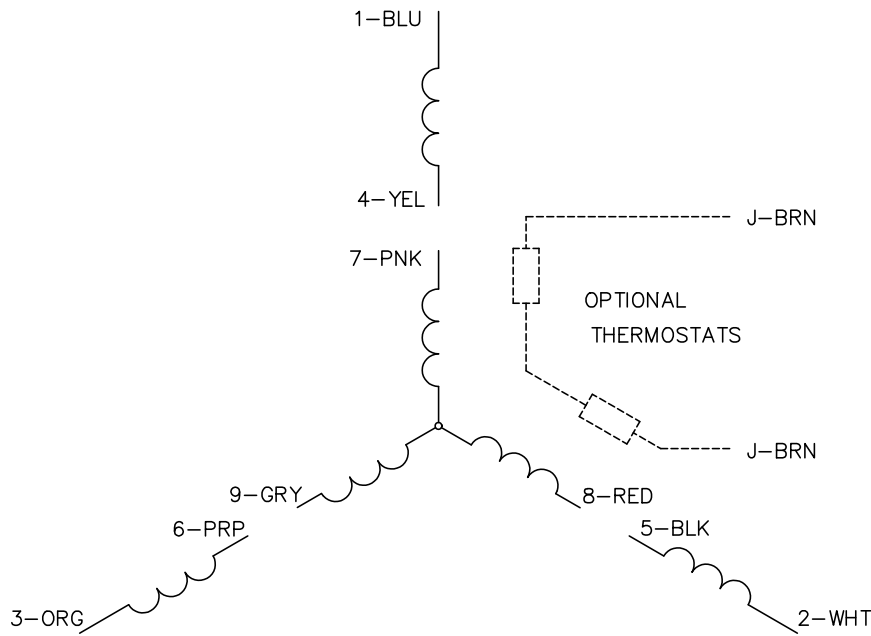
TORQUES (LB-FT): PO=6.2 PU=3.4 LR=4.2 LRA=6.3



2/16/2025 ACPERF, record # 31539



CD0005

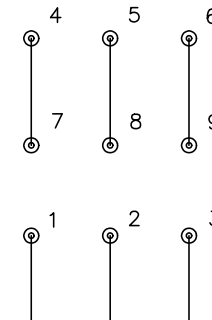


LOW VOLTAGE
(2Y)



LINE

HIGH VOLTAGE
(1Y)



LINE

NOTES:

1. INTERCHANGE ANY TWO LINE LEADS TO REVERSE ROTATION.
2. OPTIONAL THERMOSTATS ARE PROVIDED WHEN SPECIFIED.
3. ACTUAL NUMBER OF INTERNAL PARALLEL CIRCUITS MAY BE A MULTIPLE OF THOSE SHOWN ABOVE.
4. LEAD COLORS ARE OPTIONAL. LEADS MUST ALWAYS BE NUMBERED AS SHOWN.

CD0005

REV. DESC: REVISE TO SHOW OPTIONAL COLORS			
REV. LTR: E	BY: JLP	REVISED: 01/19/99 10:15	TDR: 0171435
S00000		FILE: AAA00005140	MDL: -
		MTL: -	

BALDOR ELECTRIC Co.

3PH, DV, 9 LEADS