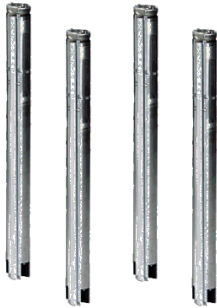


PROJECT: _____	UNIT TAG: _____	QUANTITY: _____
REPRESENTATIVE: _____	TYPE OF SERVICE: _____	DATE: _____
ENGINEER: _____	SUBMITTED BY: _____	DATE: _____
CONTRACTOR: _____	APPROVED BY: _____	DATE: _____
	ORDER NO.: _____	DATE: _____

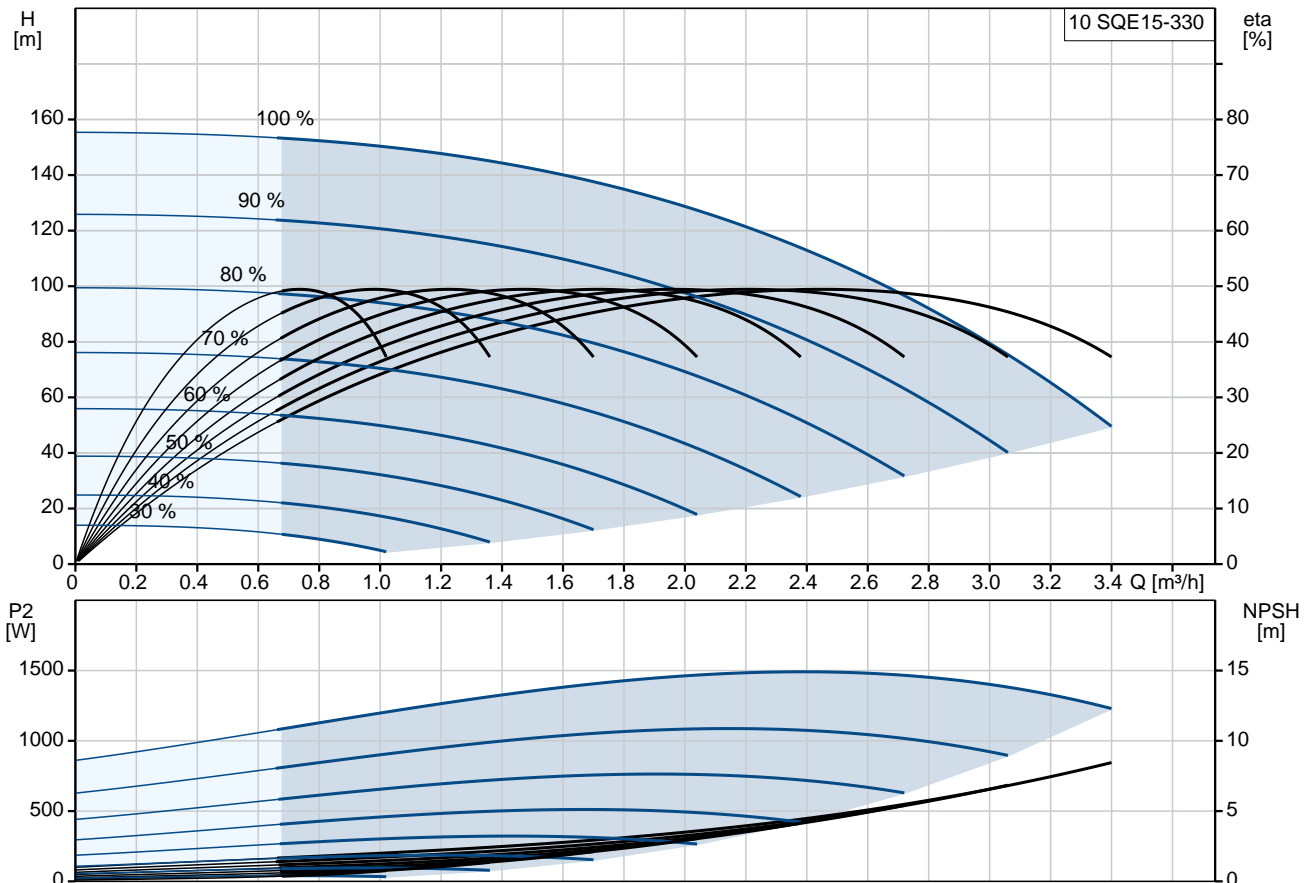


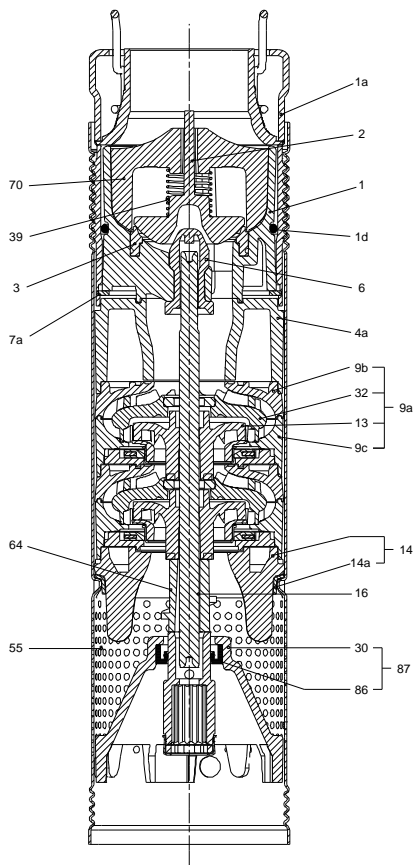
10 SQE15-330

Submersible pumps with variable speed motor

Note! Product picture may differ from actual product

Conditions of Service	Pump Data	Motor Data
Flow: _____	Approvals: UL, cUL	Rated voltage: 200-240 V
Head: _____	Approvals motor: UL, CUL	Mains frequency: 50 Hz
Efficiency: _____	Product number: 96160187	Enclosure class: IP68
Liquid: Water		Insulation class: F
Temperature: 20 °C		Motor protection: Y
NPSH required: m		Thermal protection: internal
Viscosity: _____		Motor type: MSE3
Specific Gravity: 1.000		

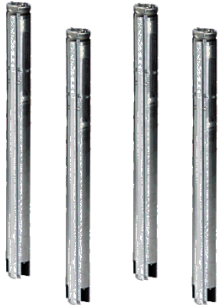




Materials:

Pump: Polyethylene / Stainless steel
DIN W.-Nr. 1.4301

Motor: Stainless steel
DIN W.-Nr. 1.4301
AISI 304

Qty.	Description																																														
1	<p data-bbox="199 340 367 362">10 SQE15-330</p> <div data-bbox="284 385 502 689" style="text-align: center;">  </div> <p data-bbox="590 683 1077 705" style="text-align: center;">Note! Product picture may differ from actual product</p> <p data-bbox="199 712 470 739">Product No.: 96160187</p> <p data-bbox="199 743 1380 817">3" multi-stage, submersible pump designed for domestic water supply, liquid transfer in tanks, irrigation and environmental applications. The pump has "floating" impellers, each with its own tungsten carbide/ceramic bearing.</p> <p data-bbox="199 855 1444 907">The pump features soft starting and protection against dry-running, upthrust, overvoltage, undervoltage, overload and overtemperature.</p> <p data-bbox="199 945 1444 996">The motor is a single-phase motor of the permanent magnet rotor type ensuring optimum efficiency within a wide load range.</p> <p data-bbox="199 1003 861 1030">The motor is fitted with a replaceable end cover with socket.</p> <p data-bbox="199 1064 287 1086">Liquid:</p> <table data-bbox="199 1093 702 1243"> <tr> <td>Pumped liquid:</td> <td>Water</td> </tr> <tr> <td>Maximum liquid temperature:</td> <td>35 °C</td> </tr> <tr> <td>Max liquid t at 0.15 m/sec:</td> <td>35 °C</td> </tr> <tr> <td>Selected liquid temperature:</td> <td>20 °C</td> </tr> <tr> <td>Density:</td> <td>998.2 kg/m³</td> </tr> </table> <p data-bbox="199 1272 327 1294">Technical:</p> <table data-bbox="199 1301 837 1478"> <tr> <td>Pump speed on which pump data are based:</td> <td>10700 rpm</td> </tr> <tr> <td>Rated flow:</td> <td>2 m³/h</td> </tr> <tr> <td>Rated head:</td> <td>128 m</td> </tr> <tr> <td>Approvals on nameplate:</td> <td>UL, cUL</td> </tr> <tr> <td>Approvals on motor nameplate:</td> <td>UL, CUL</td> </tr> <tr> <td>Curve tolerance:</td> <td>ISO9906:2012 3B</td> </tr> </table> <p data-bbox="199 1507 319 1529">Materials:</p> <table data-bbox="199 1536 893 1691"> <tr> <td>Pump:</td> <td>Polyethylene / Stainless steel DIN W.-Nr. 1.4301</td> </tr> <tr> <td>Motor:</td> <td>Stainless steel DIN W.-Nr. 1.4301 AISI 304</td> </tr> </table> <p data-bbox="199 1720 343 1742">Installation:</p> <table data-bbox="199 1749 686 1803"> <tr> <td>Pump outlet:</td> <td>1 1/4"NPT</td> </tr> <tr> <td>Minimum borehole diameter:</td> <td>76 mm</td> </tr> </table> <p data-bbox="199 1836 383 1859">Electrical data:</p> <table data-bbox="199 1865 726 2101"> <tr> <td>Motor type:</td> <td>MSE3</td> </tr> <tr> <td>Power input - P1:</td> <td>2.54 kW</td> </tr> <tr> <td>Rated power - P2:</td> <td>1.85 kW</td> </tr> <tr> <td>Mains frequency:</td> <td>50 Hz</td> </tr> <tr> <td>Rated voltage:</td> <td>1 x 200-240 V</td> </tr> <tr> <td>Rated current:</td> <td>12.3 A</td> </tr> <tr> <td>Power factor:</td> <td>1.00</td> </tr> <tr> <td>Rated speed:</td> <td>10700 rpm</td> </tr> </table>	Pumped liquid:	Water	Maximum liquid temperature:	35 °C	Max liquid t at 0.15 m/sec:	35 °C	Selected liquid temperature:	20 °C	Density:	998.2 kg/m ³	Pump speed on which pump data are based:	10700 rpm	Rated flow:	2 m ³ /h	Rated head:	128 m	Approvals on nameplate:	UL, cUL	Approvals on motor nameplate:	UL, CUL	Curve tolerance:	ISO9906:2012 3B	Pump:	Polyethylene / Stainless steel DIN W.-Nr. 1.4301	Motor:	Stainless steel DIN W.-Nr. 1.4301 AISI 304	Pump outlet:	1 1/4"NPT	Minimum borehole diameter:	76 mm	Motor type:	MSE3	Power input - P1:	2.54 kW	Rated power - P2:	1.85 kW	Mains frequency:	50 Hz	Rated voltage:	1 x 200-240 V	Rated current:	12.3 A	Power factor:	1.00	Rated speed:	10700 rpm
Pumped liquid:	Water																																														
Maximum liquid temperature:	35 °C																																														
Max liquid t at 0.15 m/sec:	35 °C																																														
Selected liquid temperature:	20 °C																																														
Density:	998.2 kg/m ³																																														
Pump speed on which pump data are based:	10700 rpm																																														
Rated flow:	2 m ³ /h																																														
Rated head:	128 m																																														
Approvals on nameplate:	UL, cUL																																														
Approvals on motor nameplate:	UL, CUL																																														
Curve tolerance:	ISO9906:2012 3B																																														
Pump:	Polyethylene / Stainless steel DIN W.-Nr. 1.4301																																														
Motor:	Stainless steel DIN W.-Nr. 1.4301 AISI 304																																														
Pump outlet:	1 1/4"NPT																																														
Minimum borehole diameter:	76 mm																																														
Motor type:	MSE3																																														
Power input - P1:	2.54 kW																																														
Rated power - P2:	1.85 kW																																														
Mains frequency:	50 Hz																																														
Rated voltage:	1 x 200-240 V																																														
Rated current:	12.3 A																																														
Power factor:	1.00																																														
Rated speed:	10700 rpm																																														



Company name:

Created by:

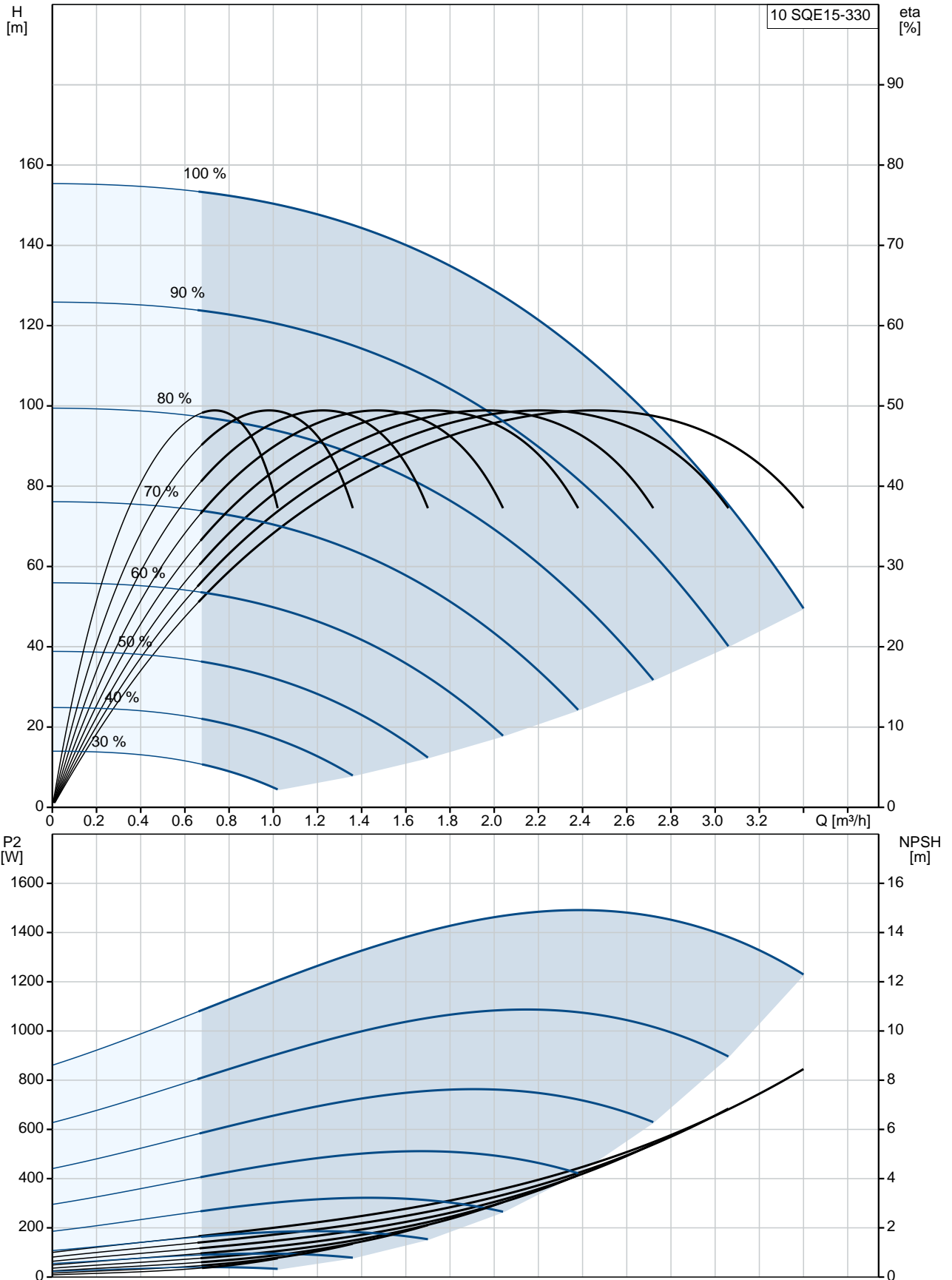
Phone:

Date:

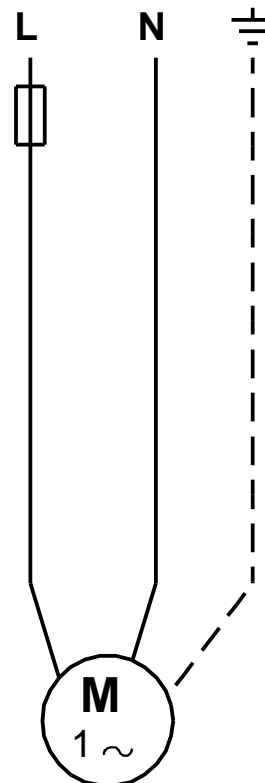
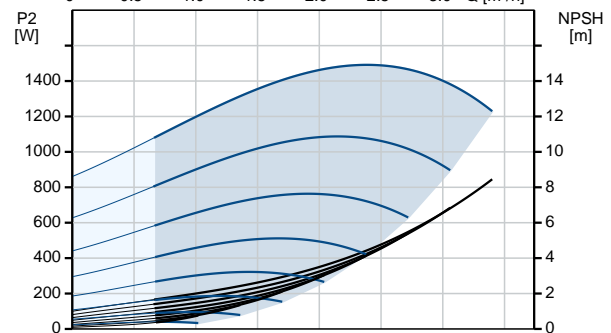
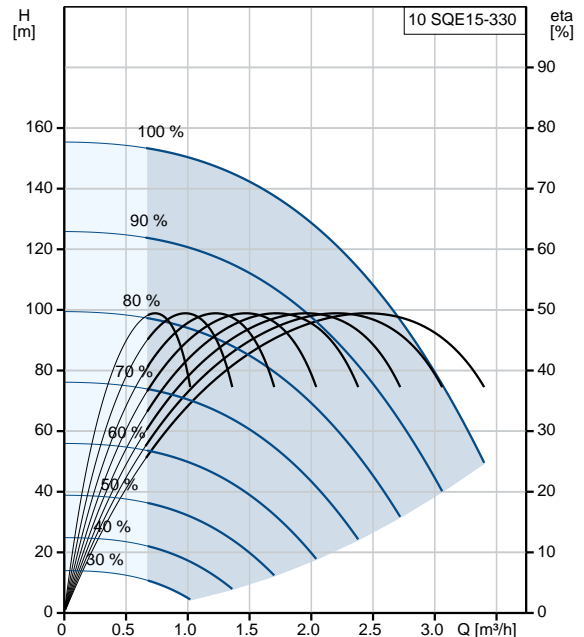
29/01/2020

Qty.	Description
	<p>Start. method: direct-on-line Enclosure class (IEC 34-5): IP68 Insulation class (IEC 85): F Length of cable: 1.5 m Motor No: 96160542</p>

96160187 10 SQE15-330 50 Hz



Description	Value
General information:	
Product name:	10 SQE15-330
Product No:	96160187
EAN number:	5700398712909
	5700398712909
Technical:	
Pump speed on which pump data are based:	10700 rpm
Rated flow:	2 m ³ /h
Rated head:	128 m
Stages:	7
Approvals on nameplate:	UL, cUL
Approvals on motor nameplate:	UL,CUL
Curve tolerance:	ISO9906:2012 3B
Pump No:	96397415
Model:	B
Valve:	pump with built-in non-return valve
Materials:	
Pump:	Polyethylene / Stainless steel DIN W.-Nr. 1.4301
Motor:	Stainless steel DIN W.-Nr. 1.4301 AISI 304
Installation:	
Pump outlet:	1 1/4"NPT
Minimum borehole diameter:	76 mm
Liquid:	
Pumped liquid:	Water
Maximum liquid temperature:	35 °C
Max liquid t at 0.15 m/sec:	35 °C
Selected liquid temperature:	20 °C
Density:	998.2 kg/m ³
Electrical data:	
Motor type:	MSE3
Power input - P1:	2.54 kW
Rated power - P2:	1.85 kW
Mains frequency:	50 Hz
Rated voltage:	1 x 200-240 V
Rated current:	12.3 A
Power factor:	1.00
Rated speed:	10700 rpm
Start. method:	direct-on-line
Enclosure class (IEC 34-5):	IP68
Insulation class (IEC 85):	F
Motor protec:	Y
Thermal protec:	internal
Length of cable:	1.5 m
Motor No:	96160542
Controls:	
CU 300/CU 301:	communication with CU 300/CU 301 possible
Others:	
Sales region:	Namreg





Company name:

Created by:

Phone:

Date: 29/01/2020

Order Data:

Product name: 10 SQE15-330

Amount: 1

Product No: 96160187

Total: Price on request

**Spare parts 10 SQE15-330, Product No. 96160187
Produced After 1249 (production year and week number)**

Pos	Description	Annotation	Classification Data	Part no.	Qty.	Unit
-	Kit, cable		Length (M): 1,5	96160894	1	pcs
	Cable w/plug				1	
- 250	Screw				1	
18a	Pan head tapping screw					
250	Pan head screw					
-	Motor				1	pcs
-	Kit, cable			97778318	1	
220	Power Supply					
- 250	Screw					
18a	Pan head tapping screw					
250	Pan head screw					
-	Pump w/o motor				1	pcs
-	Kit, valve			96427517	1	
1d	O-ring					
1	Valve casing					
2	Valve cup					
3	Valve seat					
6	Bearing					
7a	Retaining ring					
39	Compression spring					
70	Valve guide					
-	Kit, wear parts			96479868	1	
	Inlet part					
4a	Chamber, empty					
- 9a	Chamber cpl.					
	Neck ring retainer					
9c	Chamber bottom					
9b	Chamber top					
13	Impeller					
32	Guide vane					
45	Sealing cpl.					
14a	Ring					
64	Priming screw					
87	Cone					
16	Shaft cpl.		Length (mm): 232,6	99408352	1	