

BALDOR • RELIANCE

Customer information packet

CDRX050744

0.75//0.5HP, 1765//1470RPM, 3PH, 60//50HZ, 5

Class - CLI GP C,D

Division - Division I

Specifications

Enclosure	XPFC
Frame	56C
Frame Material	Steel
Frequency	50.00 Hz 60.00 Hz
Haz Area Class and Group	CLI GP C,D
Haz Area Division	Division I
Motor Letter Type	Three Phase
Output @ Frequency	.500 HP @ 50 HZ .750 HP @ 60 HZ
Phase	3
Synchronous Speed @ Frequency	1800 RPM @ 50 HZ
Voltage @ Frequency	230.0 V @ 60 HZ 190.0 V @ 50 HZ 460.0 V @ 60 HZ 380.0 V @ 50 HZ
Agency Approvals	CSA UL
Ambient Temperature	40 °C
Auxillary Box	No Auxillary Box
Auxillary Box Lead Termination	None
Base Indicator	Rigid
Bearing Grease Type	Polyrex EM (-20F +300F)
Blower	None
Constant Torque Speed Range	6
Current @ Voltage	2.400 A @ 208.0 V 2.400 A @ 230.0 V 2.200 A @ 190.0 V 1.200 A @ 460.0 V 1.100 A @ 380.0 V
Design Code	B
Drip Cover	No Drip Cover

Part detail

Revision	F
Type	AC
Mech. spec.	
Base	
Status	PRD/A
Elec. spec.	35WGG069
Layout	35LYX738
Eff. date	10-27-2023
CD Diagram	CD0005
Poles	04
Leads	9#18
Proprietary	False
Created date	10-28-2021

Duty Rating	CONT
Efficiency @ 100% Load	82.5 %
Electrically Isolated Bearing	Not Electrically Isolated
Feedback Device	NO FEEDBACK
Haz Area Temp Code	T3C
Heater Indicator	No Heater
High Voltage Full Load Amps	1.1 a
Insulation Class	B
Inverter Code	Inverter Duty
KVA Code	K
Lifting Lugs	No Lifting Lugs
Locked Bearing Indicator	Locked Bearing
Max Speed	2700 rpm
Motor Lead Termination	Flying Leads
Motor Standards	NEMA
Motor Type	3514M
Mounting Arrangement	F1
Number of Poles	4
Overall Length	14.28 IN
Power Factor	74
Product Family	General Purpose
Pulley Face Code	C-Face
Rodent Screen	None
Service Factor	1.00
Shaft Diameter	0.625 IN
Shaft Ground Indicator	No Shaft Grounding
Shaft Rotation	Reversible
Speed	1765 rpm
Speed Code	Single Speed
Starting Method	Direct on line
Thermal Device - Bearing	None
Thermal Device - Winding	Normally Closed Thermostat
Vibration Sensor Indicator	No Vibration Sensor
Winding Thermal 1	None

Winding Thermal 2

None

Nameplate

NP1401XPSL									
NO.		CC							
S/N		TEMP CODE	T3C						
SPEC.	35-0000-1349	INV.TYPE	PWM						
CAT.NO.	CDRX050744	C HP FR	60	C HP TO	90				
HP	.75//0.5	CT HZ FROM	6	CT HZ TO	60				
VOLTS	230/460//190/380	VT HZ FROM	6	VT HZ TO	60				
AMPS	2.4/1.2//2.2/1.1	MAG CUR	1.7/0.85						
RPM	1765//1470	MX RPM	2700						
HZ	60//50	PH	3	CL	F	NOM.EFF.	82.5		
SER.F.	1.00	DES	B	SL HZ	1.2	WK2	0.101		
FRAME	56C	RATING	40C AMB-CONT						
	55C AMB @ 1.0 SF								
	1.15 SF SINEWAVE			NEMA MG-1 PT 5, IP55					

AC Induction Motor Performance Data

Record # 89842

Typical performance - not guaranteed values

Winding: 35WGG069-R027		Type: 3514M		Enclosure: XPFC	
Nameplate Data			460 V, 60 Hz: High Voltage Connection		
Rated Output (HP)	.75//.5		Full Load Torque	2.24 LB-FT	
Volts	230/460//190/380		Start Configuration	direct on line	
Full Load Amps	2.42/1.21//2.16/1.08		Breakdown Torque	8 LB-FT	
R.P.M.	1765//1470		Pull-up Torque	4.4 LB-FT	
Hz	60//50	Phase	3	Locked-rotor Torque	5.1 LB-FT
NEMA Design Code	B KVA Code		K	Starting Current	8.4 A
Service Factor (S.F.)			1	No-load Current	0.85 A
NEMA Nom. Eff.	82.5	Power Factor	74	Line-line Res. @ 25°C	30.3 Ω
Rating - Duty	40C AMB-CONT			Temp. Rise @ Rated Load	25°C
				Locked-rotor Power Factor	66.8
				Rotor inertia	0.101 lb-ft ²

Load Characteristics 460 V, 60 Hz, 0.75 HP

% of Rated Load	25	50	75	100	125	150
Power Factor	30	48	61	70	77	81
Efficiency	68.4	79.2	82.1	82.9	82.4	81.1
Speed	1791	1783	1775	1766	1757	1745
Line amperes	0.87	0.95	1.06	1.21	1.4	1.61

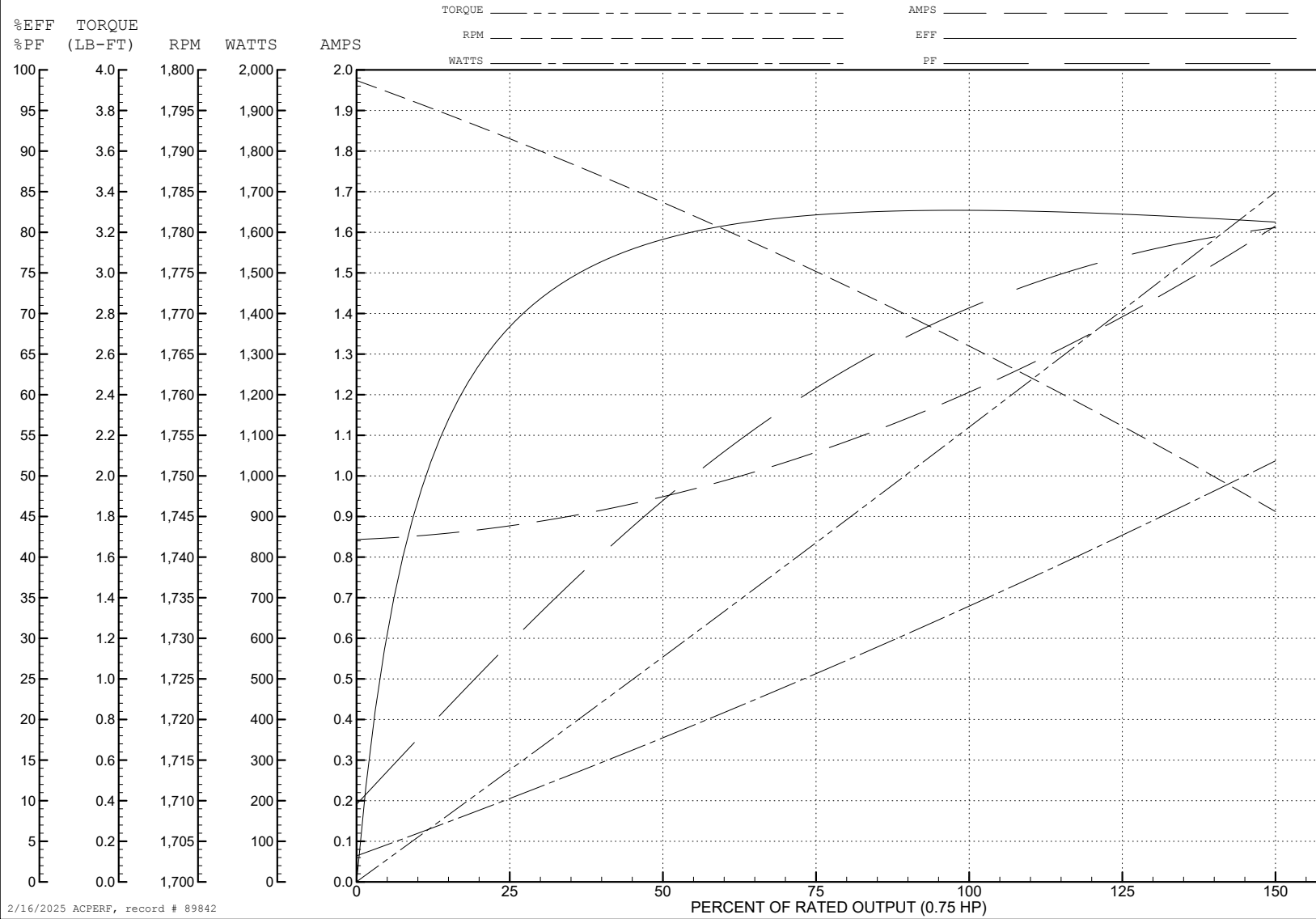
ABB Motors and Mechanical Inc.

WINDING # 35WGG069

0.75 HP 3 PH 60 HZ 1766 RPM 460 V 3514M

Typical performance - not guaranteed values.

TORQUES (LB-FT) : PO=8 PU=4.4 LR=5.1 LRA=8.4



2/16/2025 ACPERF, record # 89842

AC Induction Motor Performance Data

Record # 89843

Typical performance - not guaranteed values

Winding: 35WGG069-R027		Type: 3514M	Enclosure: XPFC			
Nameplate Data			380 V, 50 Hz: High Voltage Connection			
Rated Output (HP)	.75//.5		Full Load Torque	1.79 LB-FT		
Volts	230/460//190/380		Start Configuration	direct on line		
Full Load Amps	2.42/1.21//2.16/1.08		Breakdown Torque	7.1 LB-FT		
R.P.M.	1765//1470		Pull-up Torque	4.1 LB-FT		
Hz	60//50	Phase	3	Locked-rotor Torque	4.8 LB-FT	
NEMA Design Code	B		KVA Code	K	Starting Current	7.7 A
Service Factor (S.F.)	1			No-load Current	0.83 A	
NEMA Nom. Eff.	82.5	Power Factor	74	Line-line Res. @ 25°C	30.3 Ω	
Rating - Duty	40C AMB-CONT			Temp. Rise @ Rated Load	21°C	
				Locked-rotor Power Factor	72.2	
				Rotor inertia	0.101 lb-ft ²	

Load Characteristics 380 V, 50 Hz, 0.5 HP

% of Rated Load	25	50	75	100	125	150
Power Factor	28	43	56	66	73	78
Efficiency	63.5	75.7	79.7	81.1	81.1	80.2
Speed	1492	1486	1480	1472	1465	1456
Line amperes	0.84	0.89	0.97	1.07	1.21	1.37

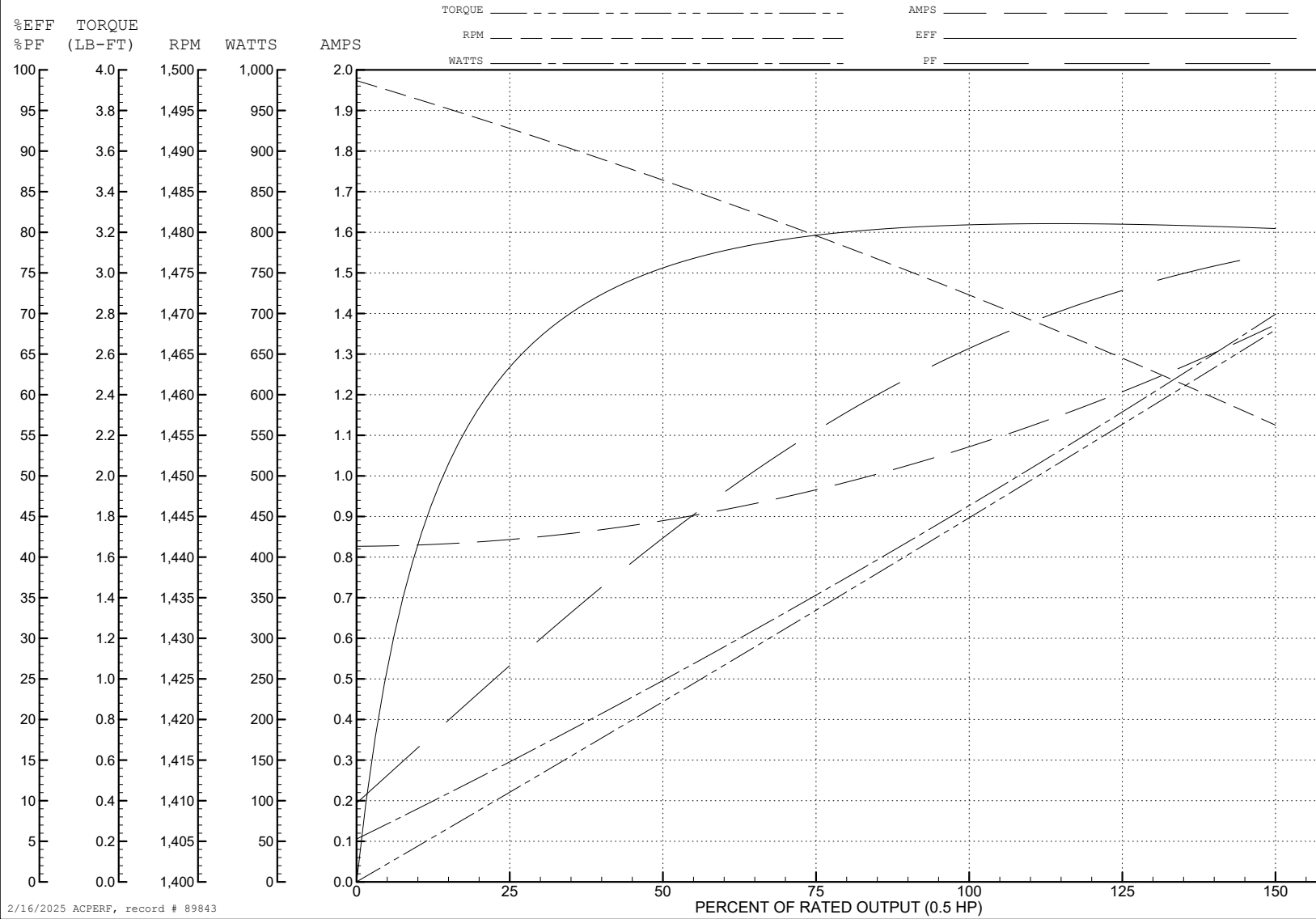
ABB Motors and Mechanical Inc.

WINDING # 35WGG069

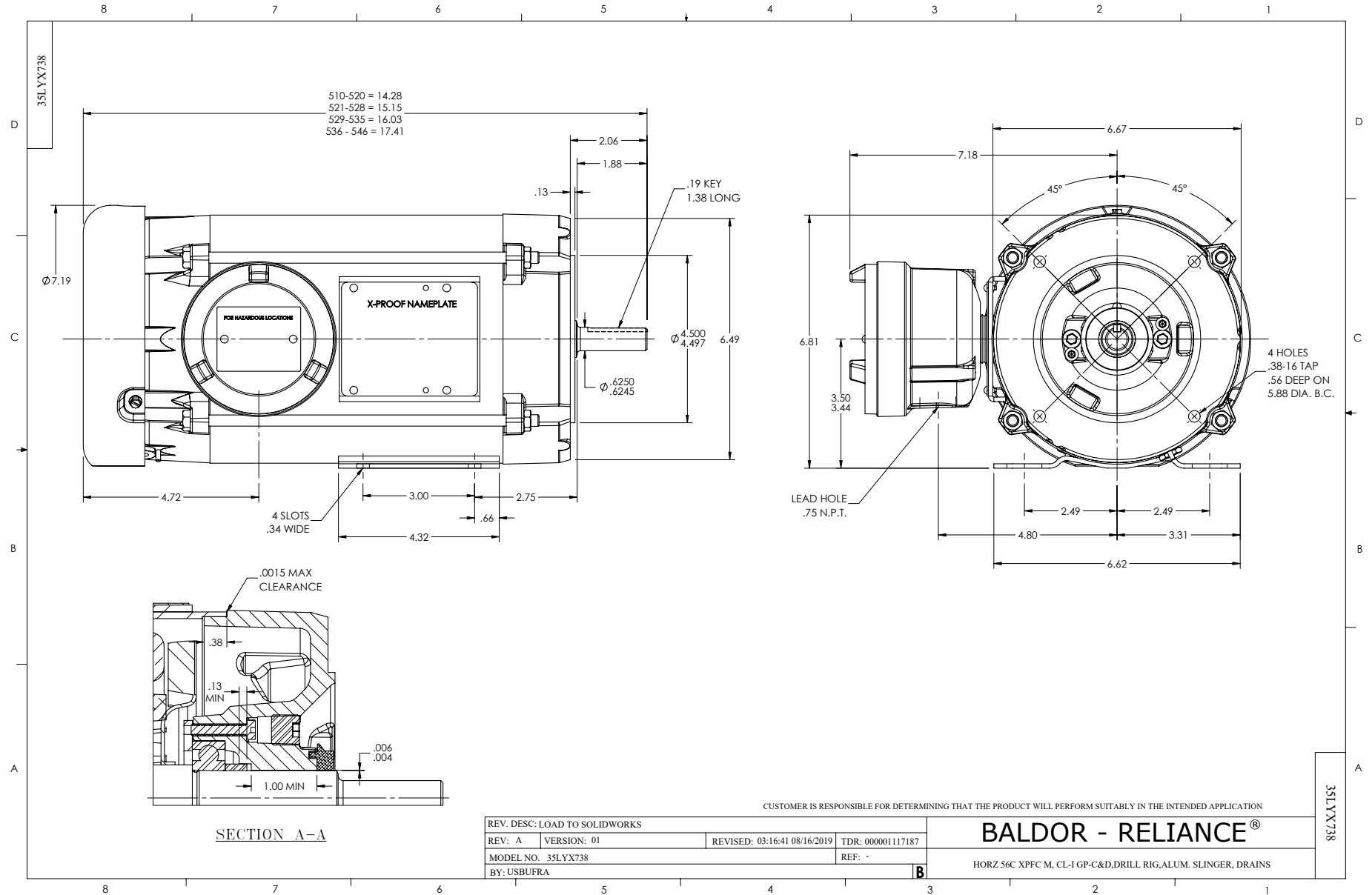
0.5 HP 3 PH 50 HZ 1472 RPM 380 V 3514M

Typical performance - not guaranteed values.

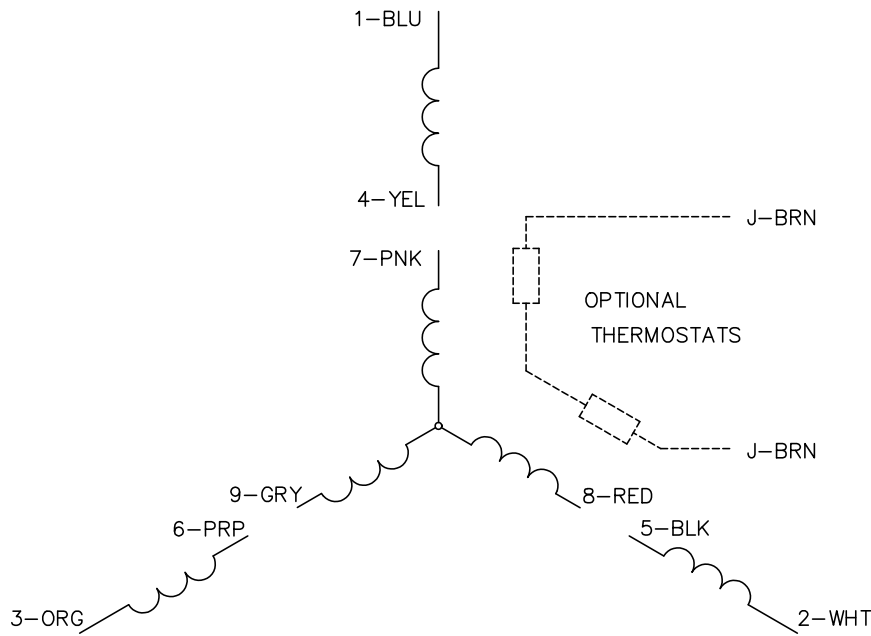
TORQUES (LB-FT): PO=7.1 PU=4.1 LR=4.8 LRA=7.7



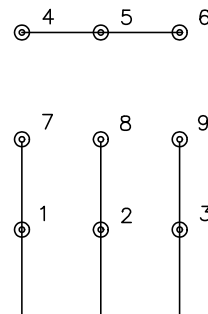
2/16/2025 ACPERF, record # 89843



CD0005

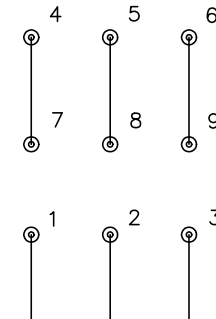


LOW VOLTAGE (2Y)



LINE

HIGH VOLTAGE (1Y)



LINE

NOTES:

1. INTERCHANGE ANY TWO LINE LEADS TO REVERSE ROTATION.
2. OPTIONAL THERMOSTATS ARE PROVIDED WHEN SPECIFIED.
3. ACTUAL NUMBER OF INTERNAL PARALLEL CIRCUITS MAY BE A MULTIPLE OF THOSE SHOWN ABOVE.
4. LEAD COLORS ARE OPTIONAL. LEADS MUST ALWAYS BE NUMBERED AS SHOWN.

CD0005

REV. DESC: REVISE TO SHOW OPTIONAL COLORS			
REV. LTR: E	BY: JLP	REVISED: 01/19/99 10:15	TDR: 0171435
S00000		FILE: AAA00005140	MDL: -
		MTL: -	

BALDOR ELECTRIC Co.

3PH, DV, 9 LEADS