

**BALDOR • RELIANCE**

---

# Customer information packet

## CDRX141544T

1.5//1HP, 1770//1475RPM, 3PH, 60//50HZ, 145T

Class - CLI GP C,D

Division - Division I

## Specifications

Enclosure	XPFC
Frame	145TC
Frame Material	Steel
Frequency	50.00 Hz 60.00 Hz
Haz Area Class and Group	CLI GP C,D
Haz Area Division	Division I
Motor Letter Type	Three Phase
Output @ Frequency	1.500 HP @ 60 HZ 1.000 HP @ 50 HZ
Phase	3
Synchronous Speed @ Frequency	1800 RPM @ 60 HZ
Voltage @ Frequency	190.0 V @ 50 HZ 230.0 V @ 60 HZ 380.0 V @ 50 HZ 460.0 V @ 60 HZ
Agency Approvals	CSA EEV UL
Ambient Temperature	40 °C
Auxillary Box	No Auxillary Box
Auxillary Box Lead Termination	None
Base Indicator	Rigid
Bearing Grease Type	Polyrex EM (-20F +300F)
Blower	None
Current @ Voltage	4.640 A @ 208.0 V 4.600 A @ 230.0 V 4.000 A @ 190.0 V 2.300 A @ 460.0 V 2.000 A @ 380.0 V
Design Code	B
Drip Cover	No Drip Cover
Duty Rating	CONT

## Part detail

Revision	C
Type	AC
Mech. spec.	35X732
Base	
Status	PRD/A
Elec. spec.	35WGL955
Layout	35LYX732
Eff. date	03-08-2024
CD Diagram	CD0005
Poles	04
Leads	9#18
Proprietary	False
Created date	02-23-2023

Efficiency @ 100% Load	86.5 %
Electrically Isolated Bearing	Not Electrically Isolated
Feedback Device	NO FEEDBACK
Front Shaft Indicator	None
Heater Indicator	No Heater
High Voltage Full Load Amps	2.0 a
Insulation Class	F
Inverter Code	Inverter Duty
KVA Code	M
Lifting Lugs	No Lifting Lugs
Locked Bearing Indicator	Locked Bearing
Max Speed	2700 rpm
Motor Lead Quantity/Wire Size	9 @ 18 AWG
Motor Lead Termination	Flying Leads
Motor Standards	NEMA
Motor Type	3526M
Mounting Arrangement	F1
Number of Poles	4
Overall Length	15.21 IN
Power Factor	72
Product Family	Hazardous Location Motor
Pulley End Bearing Type	Ball
Pulley Face Code	C-Face
Pulley Shaft Indicator	Standard
Rodent Screen	None
RoHS Status	ROHS NON-COMPLIANT
Service Factor	1.00
Shaft Diameter	0.875 IN
Shaft Ground Indicator	No Shaft Grounding
Shaft Rotation	Reversible
Speed	1475 rpm 1770 rpm
Speed Code	Single Speed
Starting Method	Direct on line

<b>Thermal Device - Bearing</b>	None
<b>Thermal Device - Winding</b>	Normally Closed Thermostat
<b>Vibration Sensor Indicator</b>	No Vibration Sensor
<b>Winding Thermal 1</b>	None
<b>Winding Thermal 2</b>	None

**Nameplate**

NP1401XPSL									
<b>NO.</b>		<b>CC</b>							
<b>S/N</b>		<b>TEMP CODE</b>	T3C						
<b>SPEC.</b>	35X732L955	<b>INV.TYPE</b>	PWM						
<b>CAT.NO.</b>	CDRX141544T	<b>C HP FR</b>	60	<b>C HP TO</b>	90				
<b>HP</b>	1.5//1	<b>CT HZ FROM</b>	6	<b>CT HZ TO</b>	60				
<b>VOLTS</b>	230/460//190/380	<b>VT HZ FROM</b>	6	<b>VT HZ TO</b>	60				
<b>AMPS</b>	4.6/2.3//4/2	<b>MAG CUR</b>	3/1.5						
<b>RPM</b>	1770//1475	<b>MX RPM</b>	2700						
<b>HZ</b>	60//50	<b>PH</b>	3	<b>CL</b>	F	<b>NOM.EFF.</b>	86.5		
<b>SER.F.</b>	1.00	<b>DES</b>	B	<b>SL HZ</b>	1	<b>WK2</b>	0.174		
<b>FRAME</b>	145TC	<b>RATING</b>	40C AMB-CONT						
	55C AMB @ 1.0 SF								
	1.15 SF SINEWAVE			NEMA MG-1 PT 5,IP55					

**AC Induction Motor Performance Data**

Record # 73666

Typical performance - not guaranteed values

<b>Winding: 35WGL155-R039</b>		<b>Type: 3526M</b>		<b>Enclosure: XPFC</b>	
<b>Nameplate Data</b>			<b>460 V, 60 Hz: High Voltage Connection</b>		
<b>Rated Output (HP)</b>	1.5//1		<b>Full Load Torque</b>	4.46 LB-FT	
<b>Volts</b>	230/460//190/380		<b>Start Configuration</b>	direct on line	
<b>Full Load Amps</b>	4.4/2.2//4/2		<b>Breakdown Torque</b>	20.6 LB-FT	
<b>R.P.M.</b>	1760//1460		<b>Pull-up Torque</b>	10.1 LB-FT	
<b>Hz</b>	60//50	<b>Phase</b>	3	<b>Locked-rotor Torque</b>	14.4 LB-FT
<b>NEMA Design Code</b>	<b>B KVA Code</b>		M	<b>Starting Current</b>	19.3 A
<b>Service Factor (S.F.)</b>			1	<b>No-load Current</b>	1.46 A
<b>NEMA Nom. Eff.</b>	86.5	<b>Power Factor</b>	71	<b>Line-line Res. @ 25°C</b>	8.81 Ω
<b>Rating - Duty</b>	40C AMB-CONT			<b>Temp. Rise @ Rated Load</b>	42°C
				<b>Locked-rotor Power Factor</b>	49.6
				<b>Rotor inertia</b>	0.154 LB-FT <sup>2</sup>

**Load Characteristics 460 V, 60 Hz, 1.5 HP**

<b>% of Rated Load</b>	<b>25</b>	<b>50</b>	<b>75</b>	<b>100</b>	<b>125</b>	<b>150</b>
<b>Power Factor</b>	30	49	63	71	77	82
<b>Efficiency</b>	76.3	84.6	87	87.5	87	86
<b>Speed</b>	1791	1782	1772	1762	1750	1738
<b>Line amperes</b>	1.53	1.68	1.92	2.24	2.62	3

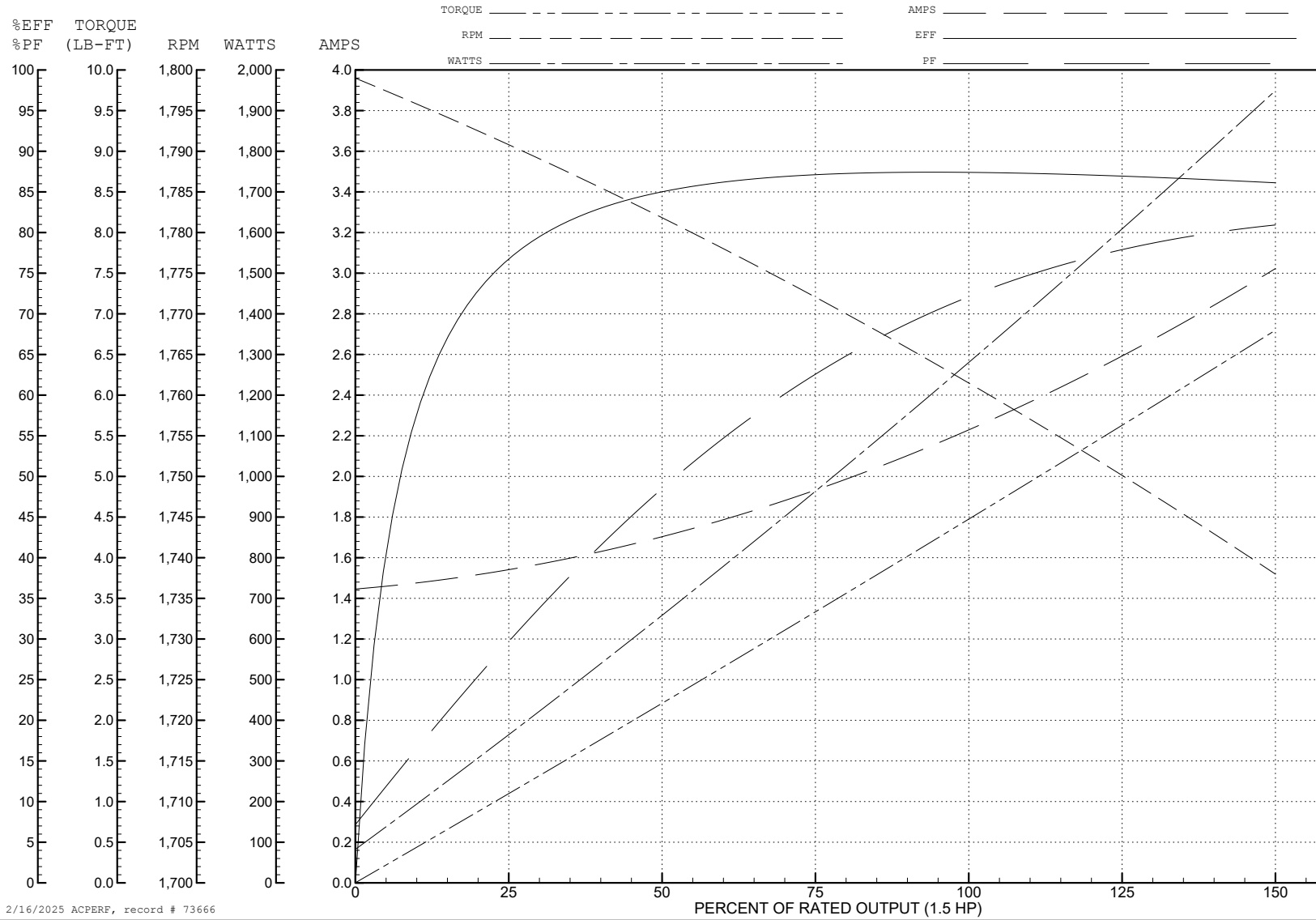
ABB Motors and Mechanical Inc.

WINDING # 35WGL155

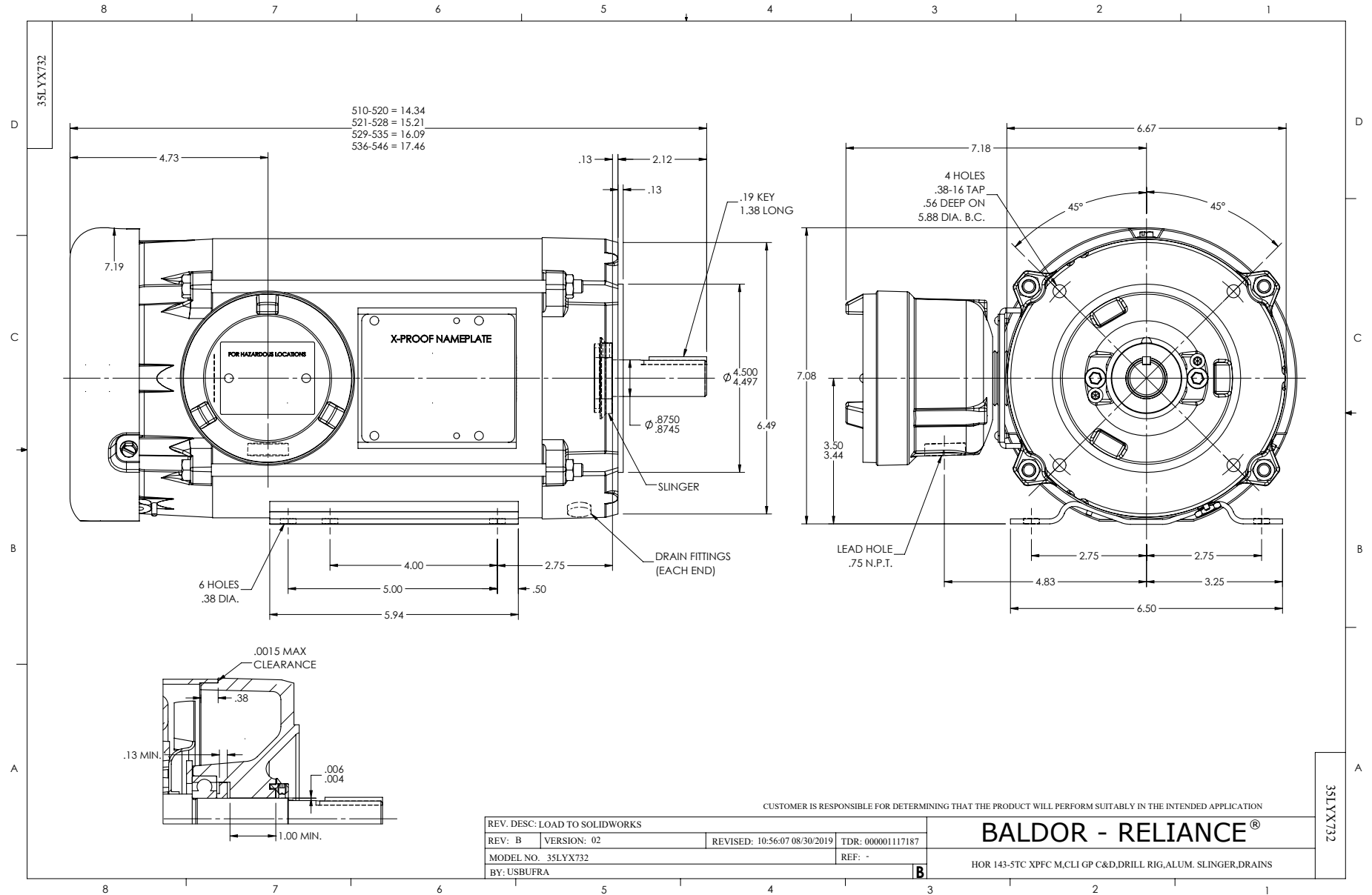
Typical performance - not guaranteed values.

1.5 HP 3 PH 60 HZ 1762 RPM 460 V 3526M

TORQUES (LB-FT): PO=20.6 PU=10.1 LR=14.4 LRA=19.3



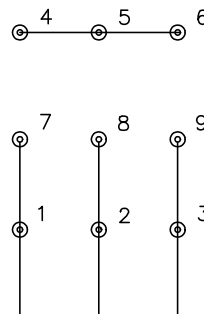
2/16/2025 ACPERF, record # 73666



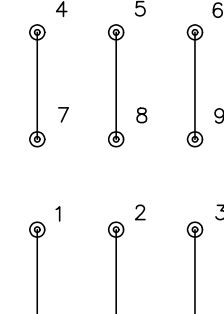
CD0005



LOW VOLTAGE  
(2Y)



HIGH VOLTAGE  
(1Y)



**NOTES:**

1. INTERCHANGE ANY TWO LINE LEADS TO REVERSE ROTATION.
2. OPTIONAL THERMOSTATS ARE PROVIDED WHEN SPECIFIED.
3. ACTUAL NUMBER OF INTERNAL PARALLEL CIRCUITS MAY BE A MULTIPLE OF THOSE SHOWN ABOVE.
4. LEAD COLORS ARE OPTIONAL. LEADS MUST ALWAYS BE NUMBERED AS SHOWN.

CD0005

REV. DESC: REVISE TO SHOW OPTIONAL COLORS			
REV. LTR: E	BY: JLP	REVISED: 01/19/99 10:15	TDR: 0171435
S00000		FILE: AAA00005140	MDL: -
		MTL: -	

**BALDOR ELECTRIC Co.**

3PH, DV, 9 LEADS