

BALDOR • RELIANCE

Customer information packet

CPX18526T

5//3HP, 3500//2900RPM, 3PH, 60//50HZ, 184T, X

Class - CLI GP C,D; CLII GP E,F,G

Division - Division I

Specifications

| | |
|--------------------------------|---|
| Enclosure | XPFC |
| Frame | 184T |
| Frame Material | Iron |
| Frequency | 50.00 Hz 60.00 Hz |
| Haz Area Class and Group | CLI GP C,D; CLII GP E,F,G |
| Haz Area Division | Division I |
| Motor Letter Type | Three Phase |
| Output @ Frequency | 3.000 HP @ 50 HZ 5.000 HP @ 60 HZ |
| Phase | 3 |
| Synchronous Speed @ Frequency | 3600 RPM @ 60 HZ |
| Voltage @ Frequency | 230.0 V @ 60 HZ 190.0 V @ 50 HZ 460.0 V @ 60 HZ 380.0 V @ 50 HZ |
| Agency Approvals | UL CSA EEV |
| Ambient Temperature | 40 °C |
| Auxillary Box | No Auxillary Box |
| Auxillary Box Lead Termination | None |
| Base Indicator | Rigid |
| Bearing Grease Type | Polyrex EM (-20F +300F) |
| Blower | None |
| Constant Torque Speed Range | 6 |
| Current @ Voltage | 8.400 A @ 190.0 V 5.500 A @ 460.0 V 4.200 A @ 380.0 V 11.000 A @ 230.0 V |
| Design Code | A |
| Drip Cover | No Drip Cover |
| Duty Rating | CONT |

Part detail

| | |
|--------------|------------|
| Revision | G |
| Type | AC |
| Mech. spec. | |
| Base | |
| Status | PRD/A |
| Elec. spec. | 06WGW431 |
| Layout | 06LYJ961 |
| Eff. date | 05-02-2024 |
| CD Diagram | CD0005 |
| Poles | 02 |
| Leads | 9#16 |
| Proprietary | False |
| Created date | 02-06-2019 |

| | |
|-------------------------------|-----------------------------|
| Efficiency @ 100% Load | 88.5 % |
| Electrically Isolated Bearing | Not Electrically Isolated |
| Enclosure Modification | Severe Duty Features |
| Feedback Device | NO FEEDBACK |
| Haz Area Temp Code | T3C |
| Heater Indicator | No Heater |
| High Voltage Full Load Amps | 4.2 a |
| Insulation Class | F |
| Inverter Code | Inverter Duty |
| IP Rating | IP55 |
| KVA Code | L |
| Lifting Lugs | Standard Lifting Lugs |
| Locked Bearing Indicator | Locked Bearing |
| Max Speed | 5400 rpm |
| Motor Lead Termination | Flying Leads |
| Motor Standards | NEMA |
| Motor Type | 0640M |
| Mounting Arrangement | F1 |
| Number of Poles | 2 |
| Overall Length | 17.59 IN |
| Power Factor | 96 |
| Product Family | Super-E Chemical Processing |
| Pulley Face Code | Standard |
| Rodent Screen | None |
| RoHS Status | ROHS NON-COMPLIANT |
| Service Factor | 1.00 |
| Shaft Diameter | 1.125 IN |
| Shaft Ground Indicator | No Shaft Grounding |
| Shaft Rotation | Reversible |
| Speed | 3500 rpm |
| Speed Code | Single Speed |
| Starting Method | Direct on line |
| Thermal Device - Bearing | None |
| Thermal Device - Winding | Normally Closed Thermostat |

Vibration Sensor Indicator**No Vibration Sensor****Winding Thermal 1****None****Winding Thermal 2****None**

Nameplate

| NP2033XPSLEV | | | | | | | | | | |
|----------------|-----------------------------|------------------|-------------------|--------------|-----------------|-----------------|------|--|--|--|
| NO. | | CC | 010A | | | | | | | |
| S/N | | TEMP CODE | T3C | | | | | | | |
| SPEC. | 06-0000-0021 | | INV.TYPE | PWM | | | | | | |
| CAT.NO. | CPX18526T | | C HP FR | 60 | C HP TO | 90 | | | | |
| HP | 5//3 | | CT HZ FROM | 6 | CT HZ TO | 60 | | | | |
| VOLTS | 230/460//190/380 | | VT HZ FROM | 6 | VT HZ TO | 60 | | | | |
| AMPS | 11/5.5//8.4/4.2 | | MAG CUR | 3/1.5 | | | | | | |
| RPM | 3500//2900 | | MX RPM | 5400 | | | | | | |
| HZ | 60//50 | PH | 3 | CL | F | NOM.EFF. | 88.5 | | | |
| SER.F. | 1.00 | DES | A | SL HZ | 1.7 | WK2 | 0.18 | | | |
| FRAME | 184T | RATING | 40C AMB-CONT | | | | | | | |
| BLANK | 55C AMB AT 1.00 SF SINEWAVE | | | | | | | | | |
| | NEMA MG-1 PART 5, IP55 | | 1.15 SF SINEWAVE | | | | | | | |

AC Induction Motor Performance Data

Record # 72833

Typical performance - not guaranteed values

| Winding: 06WGW431-R028 | | Type: 0640M | Enclosure: XPFC | |
|------------------------|-------------------|---------------------------|--|--|
| Nameplate Data | | | 460 V, 60 Hz: High Voltage Connection | |
| Rated Output (HP) | 5//3 | Full Load Torque | 7.61 LB-FT | |
| Volts | 230/460//190/380 | Start Configuration | direct on line | |
| Full Load Amps | 11/5.5//8.4/4.2 | Breakdown Torque | 35.64 LB-FT | |
| R.P.M. | 3500//2900 | Pull-up Torque | 26.7 LB-FT | |
| Hz | 60//50 Phase | Locked-rotor Torque | 30.8 LB-FT | |
| NEMA Design Code | A KVA Code | Starting Current | 62.3 A | |
| Service Factor (S.F.) | 1 | No-load Current | 1.55 A | |
| NEMA Nom. Eff. | 88.5 Power Factor | Line-line Res. @ 25°C | 2.12 Ω | |
| Rating - Duty | 40C AMB-CONT | Temp. Rise @ Rated Load | 49°C | |
| | | Locked-rotor Power Factor | 43 | |
| | | Rotor inertia | 0.179 LB-FT ² | |

Load Characteristics 460 V, 60 Hz, 5 HP

| % of Rated Load | 25 | 50 | 75 | 100 | 125 | 150 |
|-----------------|------|------|------|------|------|------|
| Power Factor | 75 | 88 | 95 | 96 | 96 | 93 |
| Efficiency | 75.1 | 83.3 | 85.8 | 86.2 | 85.7 | 84.8 |
| Speed | 3562 | 3533 | 3503 | 3470 | 3435 | 3398 |
| Line amperes | 2.14 | 3.27 | 4.38 | 5.7 | 7.1 | 8.72 |

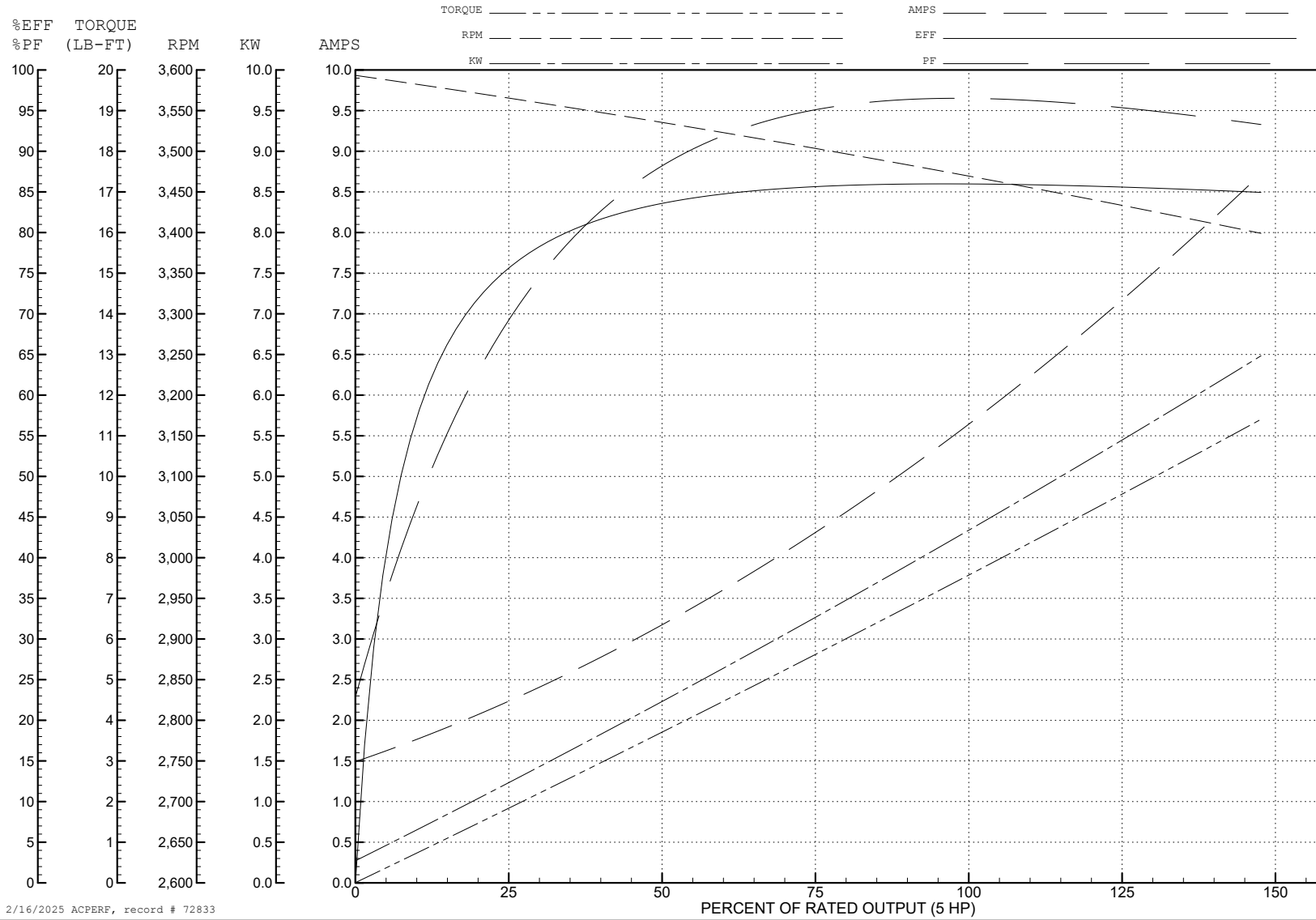
ABB Motors and Mechanical Inc.

WINDING # 06WGW431

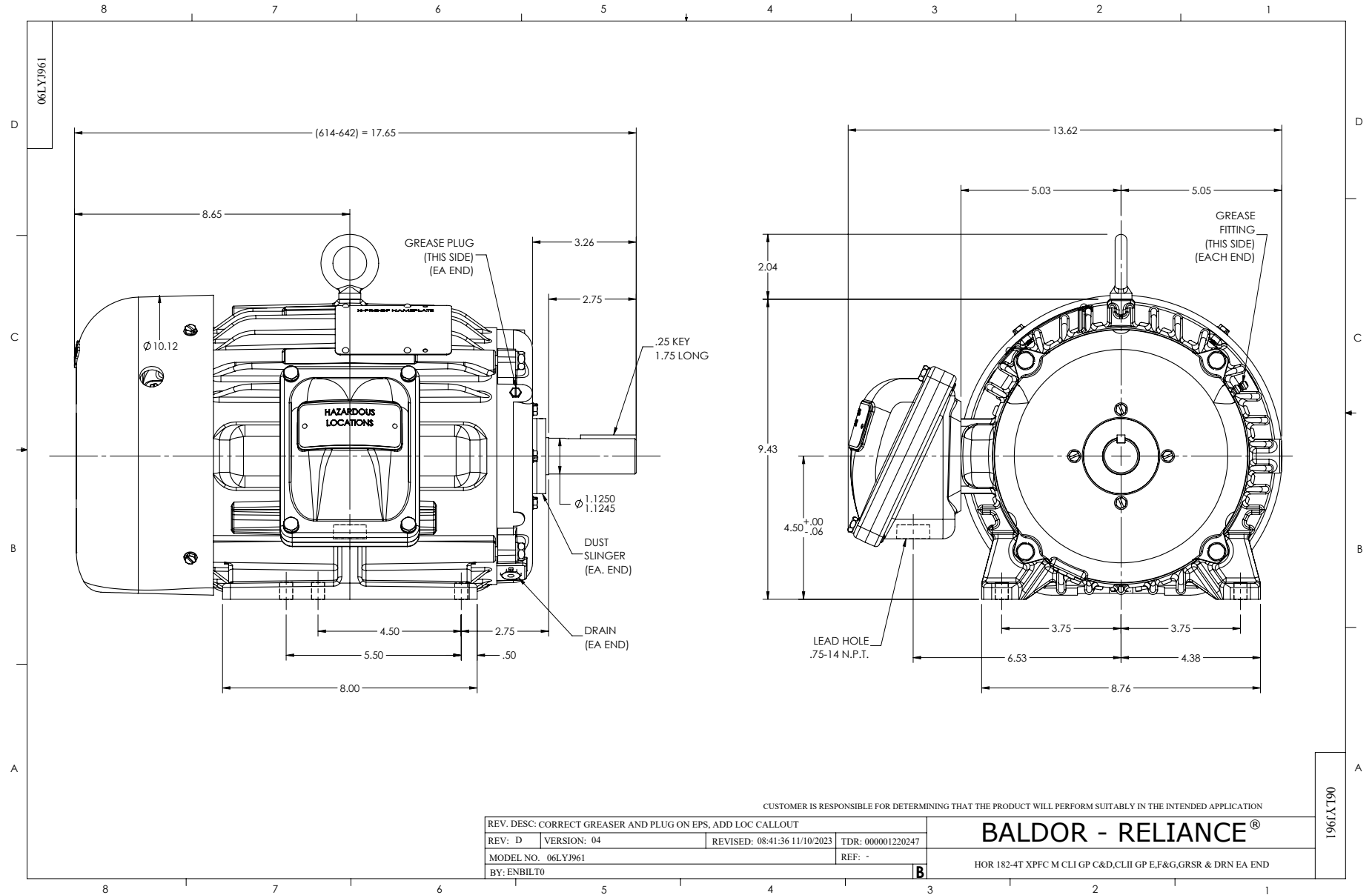
5 HP 3 PH 60 HZ 3470 RPM 460 V 0640M

Typical performance - not guaranteed values.

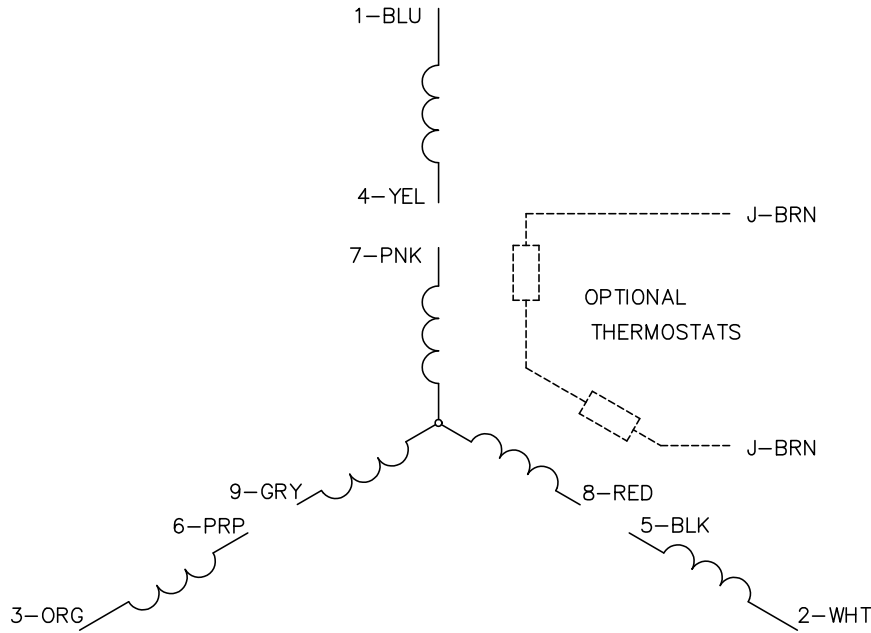
TORQUES (LB-FT): PO=35.64 PU=26.7 LR=30.8 LRA=62.3



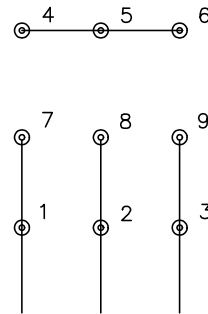
2/16/2025 ACPERF, record # 72833



CD0005



LOW VOLTAGE
(2Y)



LINE

HIGH VOLTAGE
(1Y)



LINE

NOTES:

1. INTERCHANGE ANY TWO LINE LEADS TO REVERSE ROTATION.
2. OPTIONAL THERMOSTATS ARE PROVIDED WHEN SPECIFIED.
3. ACTUAL NUMBER OF INTERNAL PARALLEL CIRCUITS MAY BE A MULTIPLE OF THOSE SHOWN ABOVE.
4. LEAD COLORS ARE OPTIONAL. LEADS MUST ALWAYS BE NUMBERED AS SHOWN.

CD0005

| | | | |
|---|---------|-------------------------|--------------|
| REV. DESC: REVISE TO SHOW OPTIONAL COLORS | | | |
| REV. LTR: E | BY: JLP | REVISED: 01/19/99 10:15 | TDR: 0171435 |
| S00000 | | FILE: AAA00005140 | MDL: - |
| | | MTL: - | |

BALDOR ELECTRIC Co.

3PH, DV, 9 LEADS