

BALDOR • RELIANCE

Customer information packet

DRX141524T

1.5HP, 3500//2900RPM, 3PH, 60HZ, 143T, XPFC, F
Class - CLI GP C,D
Division - Division I

Specifications

Enclosure	XPFC
Frame	143T
Frame Material	Steel
Frequency	50.00 Hz 60.00 Hz
Haz Area Class and Group	CLI GP C,D
Haz Area Division	Division I
Motor Letter Type	Three Phase
Output @ Frequency	1.500 HP @ 60 HZ 1.000 HP @ 50 HZ
Phase	3
Synchronous Speed @ Frequency	3600 RPM @ 60 HZ
Voltage @ Frequency	460.0 V @ 60 HZ 190.0 V @ 50 HZ 230.0 V @ 60 HZ 380.0 V @ 50 HZ
Agency Approvals	UL CSA EEV
Ambient Temperature	40 °C
Auxillary Box	No Auxillary Box
Auxillary Box Lead Termination	None
Base Indicator	Rigid
Bearing Grease Type	Polyrex EM (-20F +300F)
Blower	None
Constant Torque Speed Range	6
Current @ Voltage	1.700 A @ 380.0 V 1.900 A @ 460.0 V 3.400 A @ 190.0 V 3.800 A @ 230.0 V
Design Code	B
Drip Cover	No Drip Cover
Duty Rating	CONT

Part detail

Revision	A
Type	AC
Mech. spec.	
Base	
Status	PRD/A
Elec. spec.	35WGM760
Layout	35LYX081
Eff. date	06-15-2020
CD Diagram	CD0005
Poles	02
Leads	9#18
Proprietary	False
Created date	06-20-2019

Efficiency @ 100% Load	84.0 %
Electrically Isolated Bearing	Not Electrically Isolated
Feedback Device	NO FEEDBACK
Haz Area Temp Code	T3C
Heater Indicator	No Heater
High Voltage Full Load Amps	1.7 a
Insulation Class	F
Inverter Code	Inverter Duty
IP Rating	NONE
KVA Code	L
Lifting Lugs	No Lifting Lugs
Locked Bearing Indicator	Locked Bearing
Max Speed	5400 rpm
Motor Lead Termination	Flying Leads
Motor Standards	NEMA
Motor Type	3520M
Mounting Arrangement	F1
Number of Poles	2
Overall Length	14.22 IN
Power Factor	85
Product Family	General Purpose
Pulley Face Code	Standard
Rodent Screen	None
RoHS Status	ROHS NON-COMPLIANT
Service Factor	1.00
Shaft Diameter	0.875 IN
Shaft Ground Indicator	No Shaft Grounding
Shaft Rotation	Reversible
Speed	3500 rpm
Speed Code	Single Speed
Starting Method	Direct on line
Thermal Device - Bearing	None
Thermal Device - Winding	Normally Closed Thermostat
Vibration Sensor Indicator	No Vibration Sensor

Winding Thermal 1	None
Winding Thermal 2	None

Nameplate

NP1401XPSLEV

NO.		CC	010A				
S/N		TEMP CODE	T3C				
SPEC.	35-0000-0190	INV.TYPE	PWM				
CAT.NO.	DRX141524T	C HP FR	60	C HP TO	90		
HP	1.5//1	CT HZ FROM	6	CT HZ TO	60		
VOLTS	230/460//190/380	VT HZ FROM	6	VT HZ TO	60		
AMPS	3.8/1.9//3.4/1.7	MAG CUR	1.8/.9				
RPM	3500//2900	MX RPM	5400				
HZ	60//50	PH	3	CL	F	NOM.EFF.	84
SER.F.	1.00	DES	B	SL HZ	1.7	WK2	0.06
FRAME	143T	RATING	40C AMB-CONT				
	55C AMB @ 1.0 SF						
	1.15 SF SINEWAVE		NEMA MG-1 PT 5,IP55				

AC Induction Motor Performance Data

Record # 76578

Typical performance - not guaranteed values

Winding: 35WGM760-R019		Type: 3520M		Enclosure: XPFC	
Nameplate Data			380 V, 50 Hz: High Voltage Connection		
Rated Output (HP)	1.5	Full Load Torque	1.78 LB-FT		
Volts	230/460//190/380	Start Configuration	direct on line		
Full Load Amps	3.8/1.9//3.4/1.7	Breakdown Torque	8.7 LB-FT		
R.P.M.	3500//2900	Pull-up Torque	3.69 LB-FT		
Hz	60//50	Locked-rotor Torque	7.52 LB-FT		
NEMA Design Code	B	Starting Current	16.65 A		
Service Factor (S.F.)	1	No-load Current	0.909 A		
NEMA Nom. Eff.	84	Line-line Res. @ 25°C	9.66 Ω		
Rating - Duty	40C AMB-CONT	Temp. Rise @ Rated Load	34°C		
		Locked-rotor Power Factor	61.4		
		Rotor inertia	0.0553 LB-FT ²		

Load Characteristics 380 V, 50 Hz, 1 HP

% of Rated Load	25	50	75	100	125	150
Power Factor	42	62	75	83	87	89
Efficiency	65.1	77.1	80.7	82.1	82	81
Speed	2977	2958	2937	2915	2889	2862
Line amperes	0.981	1.15	1.37	1.65	1.96	2.34

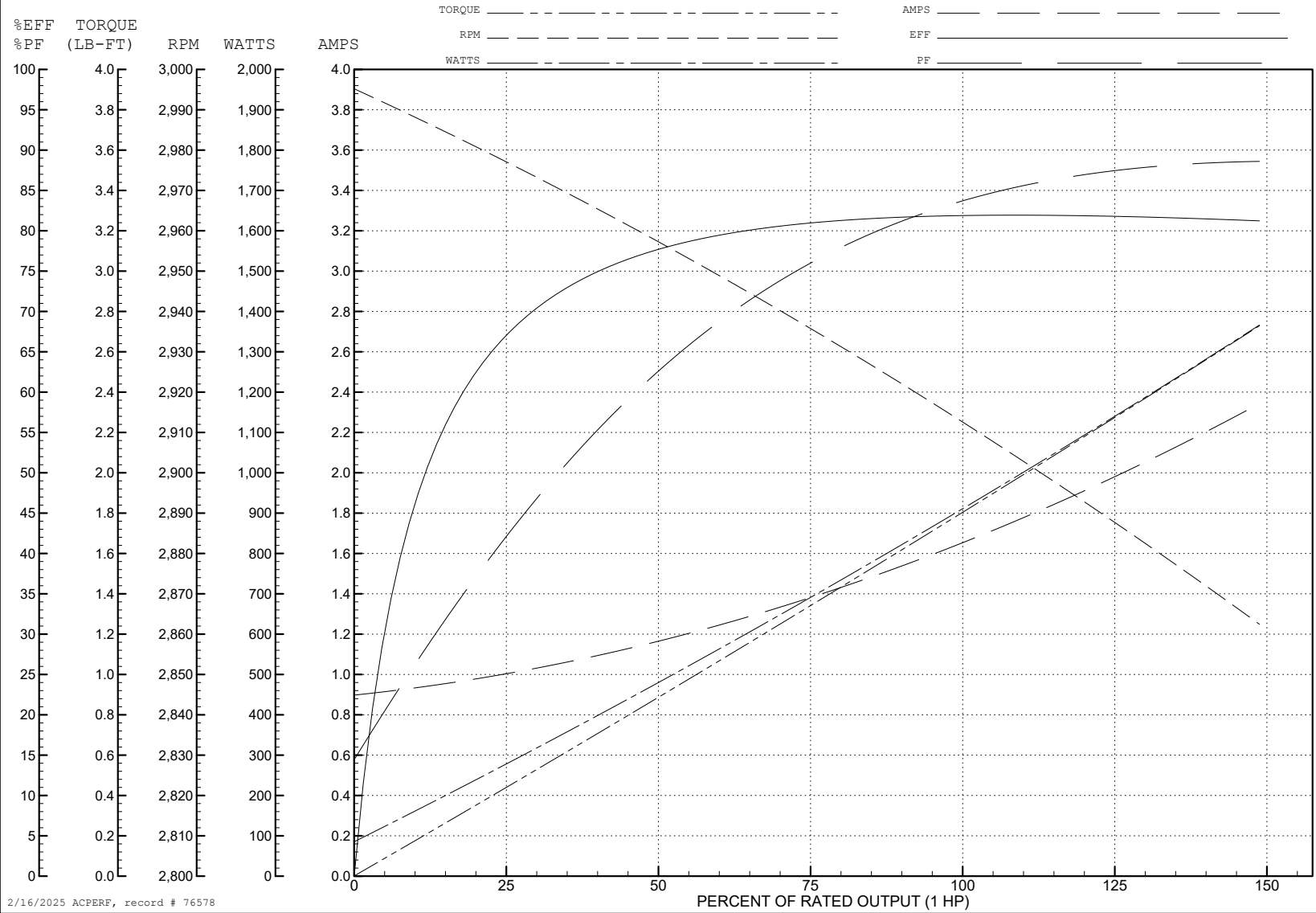
ABB Motors and Mechanical Inc.

WINDING # 35WGM760

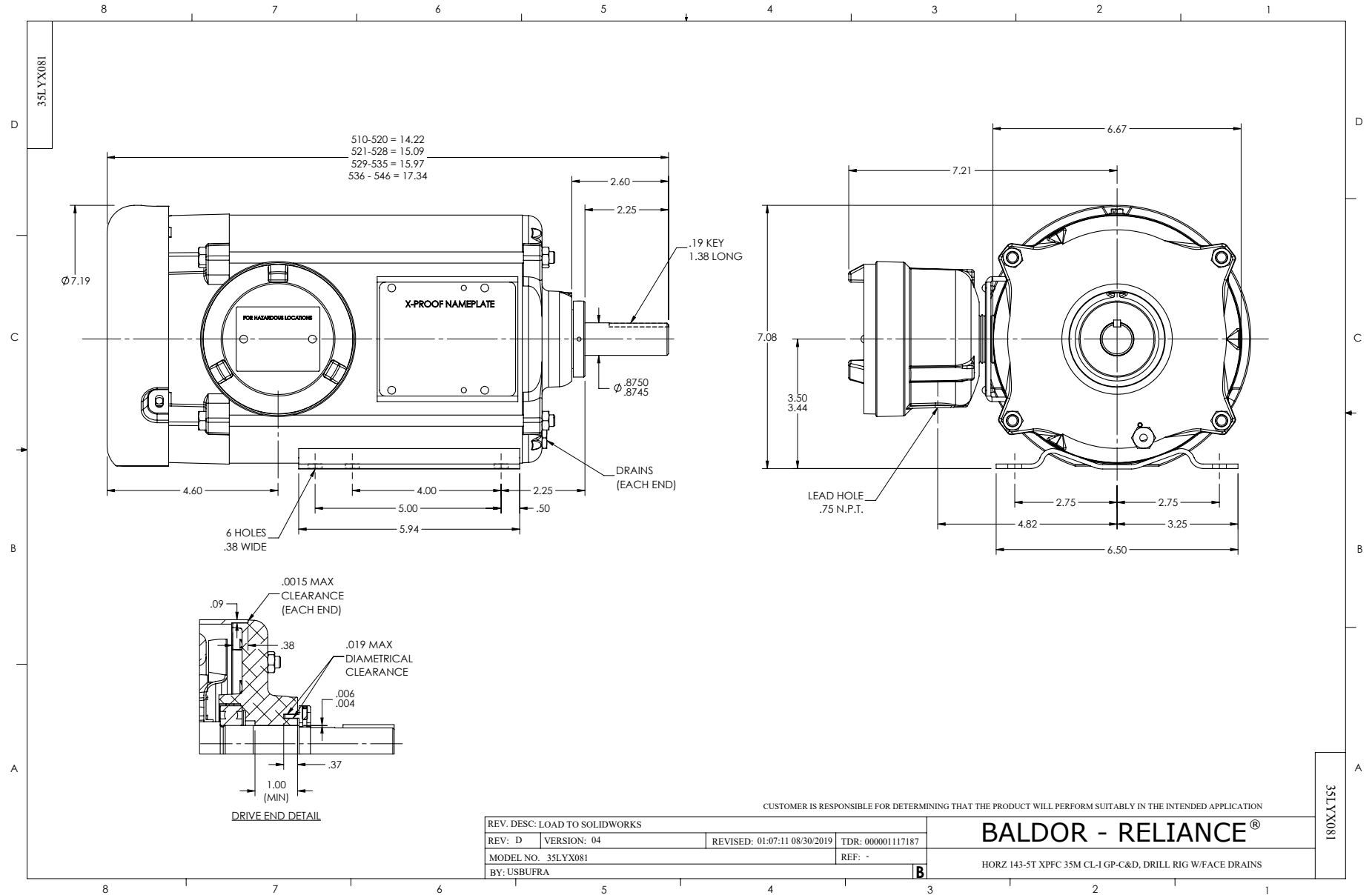
Typical performance - not guaranteed values.

1 HP 3 PH 50 HZ 2915 RPM 380 V 3520M

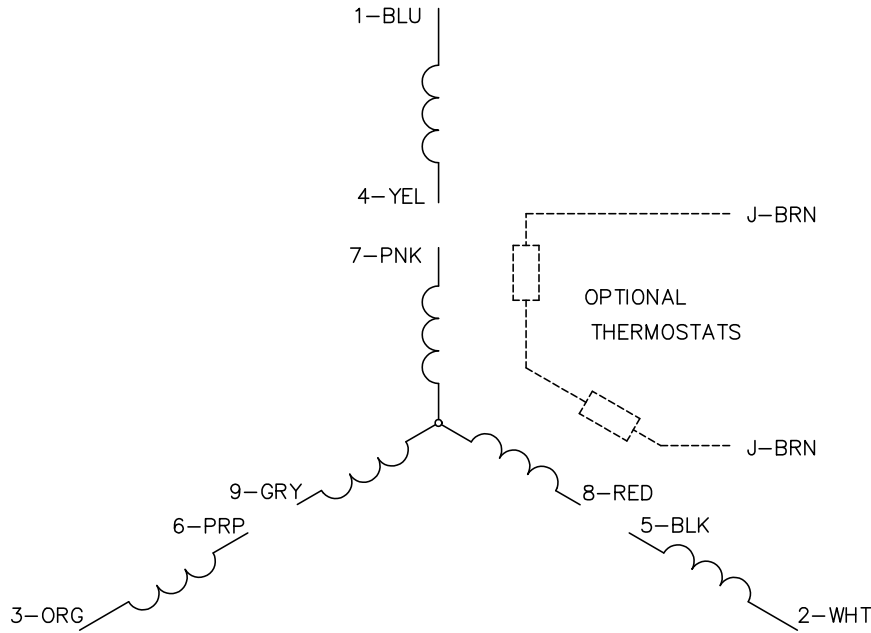
TORQUES (LB-FT): PO=8.7 PU=3.69 LR=7.52 LRA=16.65



2/16/2025 ACPERF, record # 76578



CD0005



LOW VOLTAGE
(2Y)



LINE

HIGH VOLTAGE
(1Y)



LINE

NOTES:

1. INTERCHANGE ANY TWO LINE LEADS TO REVERSE ROTATION.
2. OPTIONAL THERMOSTATS ARE PROVIDED WHEN SPECIFIED.
3. ACTUAL NUMBER OF INTERNAL PARALLEL CIRCUITS MAY BE A MULTIPLE OF THOSE SHOWN ABOVE.
4. LEAD COLORS ARE OPTIONAL. LEADS MUST ALWAYS BE NUMBERED AS SHOWN.

CD0005

REV. DESC: REVISE TO SHOW OPTIONAL COLORS			
REV. LTR: E	BY: JLP	REVISED: 01/19/99 10:15	TDR: 0171435
S00000		FILE: AAA00005140	MDL: -
		MTL: -	

BALDOR ELECTRIC Co.

3PH, DV, 9 LEADS