

**BALDOR • RELIANCE**

---

# Customer information packet

## ECP84411TR-4

125HP, 1188RPM, 3PH, 60HZ, 445T, TEFC, F1  
Class - CLI GP A,B,C,D  
Division - Division II

## Specifications

Enclosure	TEFC
Frame	445T
Frame Material	Iron
Frequency	60.00 Hz
Haz Area Class and Group	CLI GP A,B,C,D
Haz Area Division	Division II
Motor Letter Type	Three Phase
Output @ Frequency	125.000 HP @ 60 HZ
Phase	3
Synchronous Speed @ Frequency	1200 RPM @ 60 HZ
Voltage @ Frequency	460.0 V @ 60 HZ
Agency Approvals	UR CCSA US
Ambient Temperature	40 °C
Auxillary Box	No Auxillary Box
Base Indicator	Rigid
Bearing Grease Type	Mobil SHC 220 (Athens Only)
Constant Torque Speed Range	15-60
Current @ Voltage	146.000 A @ 460.0 V
Design Code	B
Drip Cover	No Drip Cover
Duty Rating	CONT
Efficiency @ 100% Load	95.0 %
Enclosure Modification	841
Feedback Device	NO FEEDBACK
Haz Area Temp Code	T3
Heater Indicator	No Heater
High Voltage Full Load Amps	146.0 a
Insulation Class	F
Inverter Code	Inverter Ready
IP Rating	IP56
KVA Code	G

## Part detail

Revision	F
Type	AC
Mech. spec.	
Base	
Status	PRD/A
Elec. spec.	A44WG3350
Layout	617434-660
Eff. date	12-11-2023
CD Diagram	416820-036
Poles	06
Leads	3#1
Proprietary	False
Created date	08-06-2019

Lifting Lugs	Standard Lifting Lugs
Motor Lead Quantity/Wire Size	3 @ 1 AWG
Motor Standards	None
Motor Type	A44090M
Mounting Arrangement	F1
No Load Current	50.2 a
Number of Poles	6
Overall Length	44.97 IN
Power Factor	84
Pulley End Bearing Type	Roller
Pulley Face Code	Standard
Service Factor	1.15
Shaft Diameter	3.375 IN
Shaft Ground Indicator	No Shaft Grounding
Shaft Rotation	Reversible
Shaft Slinger Indicator	No Slinger
Speed	1188 rpm
Speed Code	Single Speed
Starting Method	Direct on line
Thermal Device - Bearing	None
Thermal Device - Winding	None

**Nameplate**

**NP4566**

<b>CAT NO</b>	ECP84411TR-4	<b>SPEC NO.</b>	A44-9130-3350						
<b>HP</b>	125	<b>AMPS</b>	146	<b>VOLTS</b>	460	<b>DESIGN</b>	B		
<b>FRAME SIZE</b>	445T	<b>RPM</b>	1188	<b>HZ</b>	60	<b>AMB</b>	40	<b>SF</b>	1.15
<b>D.E. BRG.DATA</b>	NU222	<b>O.D.E. BRG.DATA</b>	6318	<b>PH</b>	3	<b>DUTY</b>	CONT	<b>INSUL.CLASS</b>	F
<b>D.E. BRG.</b>	110RU02M30X	<b>TYPE</b>	ENCL	<b>TEFC</b>	CODE	G			
<b>O.D.E. BRG.</b>	90BC03J30X	<b>POWER FACTOR</b>	84	<b>NEMA-NOM-EFFICIENCY</b>	95				
<b>3/4 LOAD EFF.</b>	95.3	<b>IP</b>	56	<b>MAX CORR KVAR</b>	30	<b>GUARANTEED EFFICIENCY</b>	94.1		
<b>TEMP CODE</b>	T3	<b>TEMP =</b>	200						
<b>CHP HZ</b>	60-90	<b>CT HZ</b>	15-60	<b>VT HZ</b>	0-60				
<b>INVERTER-TEMP-CODE</b>	T3								
<b>SER.NO.</b>		<b>MOTOR WEIGHT</b>							

---

**000613007EX**

---

<b>CAT NO</b>	ECP84411TR-4	<b>SPEC NO.</b>	A44-9130-3350
<b>NO. ROTOR BARS</b>	71	<b>GREASE TYPE</b>	MOBIL SHC 220
<b>NO. SLOTS</b>	90	<b>NL AMPS AT RATED VOLTAGE</b>	50.2
<b>5 YEAR WARRANTY</b>		<b>WINDING RES @25 C</b>	.0364 <b>OHMS</b>
<b>MFG. DATE</b>		<b>SER.NO</b>	

---







617434-660

ENCLOSURE: TOTALLY ENCLOSED

**DUTY MASTER ALTERNATING CURRENT MOTORS**

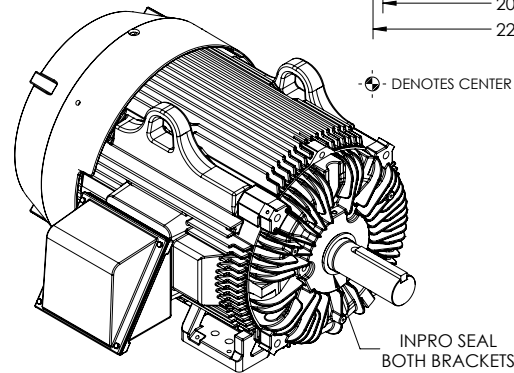
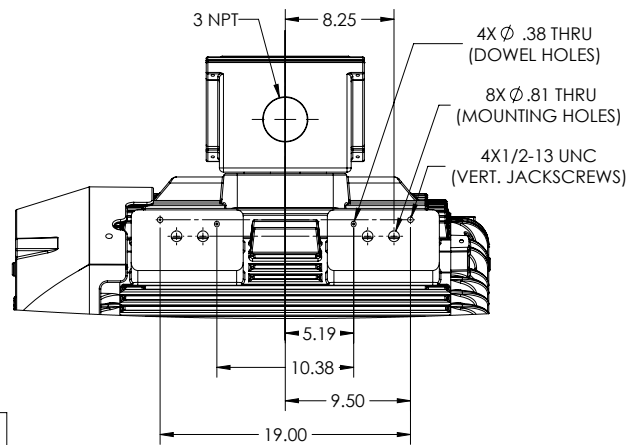
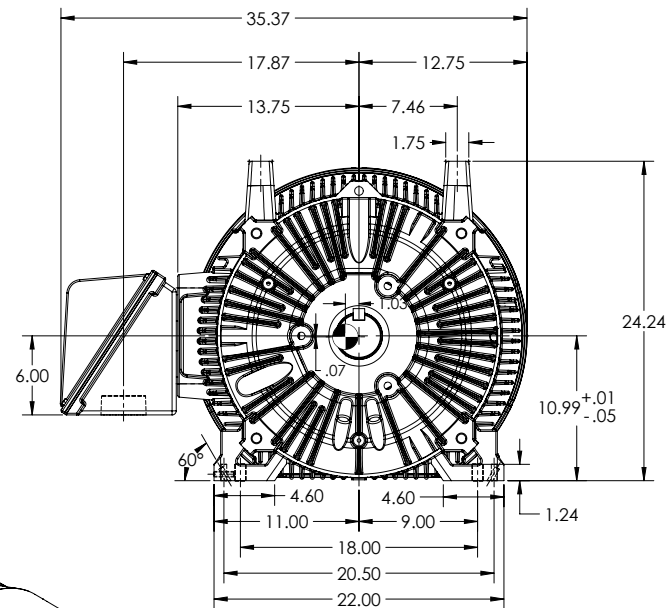
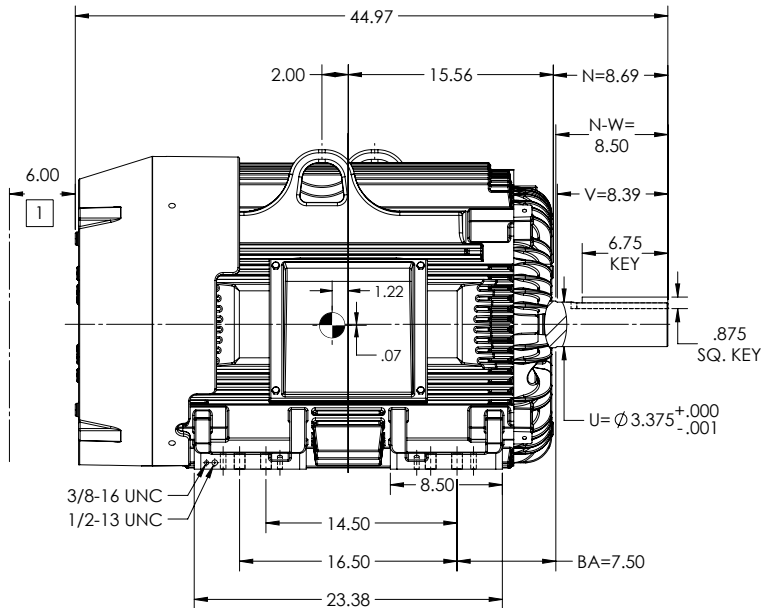
SQUIRREL-CAGE INDUCTION

COOLING: FAN COOLED

MOUNTING: FOOT, F-1 SIDE

G445T/G444T FRAME MOUNTING HOLES  
CENTER OF GRAVITY

841-XL ENHANCEMENT



⊙ DENOTES CENTER OF GRAVITY WHICH VARIES BY ±1.00 INCH

1 OBSTRUCTION MUST NOT ENCR OACH ON AIR INLET.

DIMENSIONS ARE IN INCHES.  
MOTOR WEIGHTS (LBS) = 2130 ±15% DEPENDING ON RATING.  
IF MOUNTING CLEARANCE DETAILS ARE REQUIRED, CONSULT FACTORY.  
MAX PERMISSIBLE SHAFT RUNOUT WHEN MEASURED AT END OF STANDARD SHAFT EXTENSION IS .0015 T.I.R.(BALL)  
OR .002 T.I.R.(ROLLER)  
CUSTOMER IS RESPONSIBLE FOR DETERMINING THAT MOTOR PERFORMANCE IS SUITABLE IN THE APPLICATION.

SHEET NUMBER  
1 OF 2

099-Fc7L19

REV. DESC: ADD CENTER GRAVITY		TDR: 000001134943	
REV: C	VERSION: 03	REVISED: 08-56-38 03/10/2020	REF:
MODEL NO. 617434-660	BY: RAGGDM	Material:	

**BALDOR**

G445/444T TEFC F1 FTD C1 BX JACKSCREWS/DOWEL PINS-INPRO/CSG

617434-660

617434-660

ENCLOSURE: TOTALLY ENCLOSED

**DUTY MASTER ALTERNATING CURRENT MOTORS**

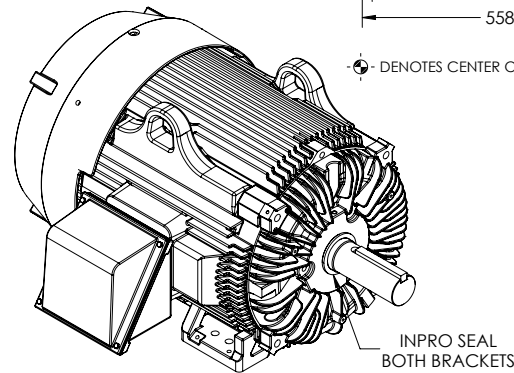
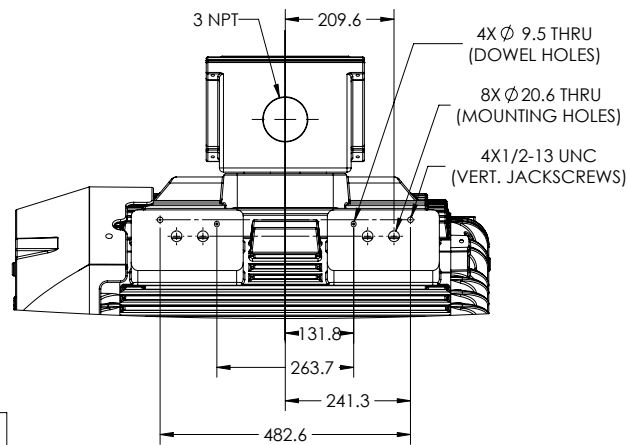
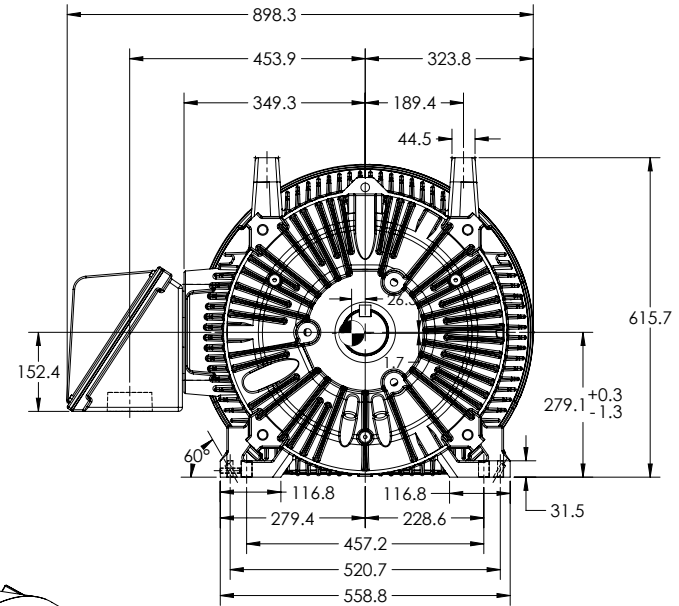
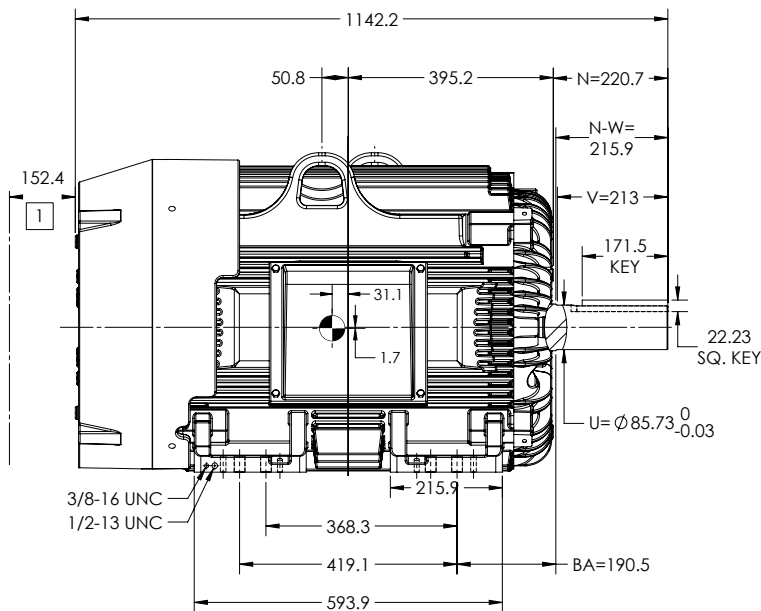
SQUIRREL-CAGE INDUCTION

COOLING: FAN COOLED

MOUNTING: FOOT, F-1 SIDE

G445T/G444T FRAME MOUNTING HOLES  
CENTER OF GRAVITY

841-XL ENHANCEMENT



⊙ DENOTES CENTER OF GRAVITY WHICH VARIES BY ±1.00 INCH

1 OBSTRUCTION MUST NOT ENCR OACH ON AIR INLET.

DIMENSIONS ARE IN MILLIMETERS.  
MOTOR WEIGHTS (KGS) = 970 ±15% DEPENDING ON RATING.  
IF MOUNTING CLEARANCE DETAILS ARE REQUIRED, CONSULT FACTORY.  
MAX PERMISSIBLE SHAFT RUNOUT WHEN MEASURED AT END OF STANDARD SHAFT EXTENSION IS .04 T.I.R.(BALL)  
OR .05 T.I.R.(ROLLER)  
CUSTOMER IS RESPONSIBLE FOR DETERMINING THAT MOTOR PERFORMANCE IS SUITABLE IN THE APPLICATION.

SHEET NUMBER  
2 OF 2

099-F72-119

REV. DESC: ADD CENTER GRAVITY		TDR: 000001134943	
REV: C	VERSION: 03	REVISED: 08-56-38 03/10/2020	REF:
MODEL NO. 617434-660		REF:	
BY: RAGGDM	Material:	C	

**BALDOR**

G445/444T TEFC F1 FTD C1 BX JACKSCREWS/DOWEL PINS-INPROS/CG

617434-660

416820-036

A-C MOTOR  
CONNECTION DIAGRAM  
STANDARD 3 LEAD CONNECTED



(N.P. 1575-BA)

416820-036

REV. DESC: LOADED TO BUS, C/R 335225		
REV. LTR: -	VERSION: 00	TDR: 000000538207
FILE: \MGA\00000\682	REVISED: 11:54:06 04/30/2010	
MTL: -	BY: RAGRA	

**BALDOR**

CONN DIAG - STANDARD 3 LEAD  
SH 1 of 1