

BALDOR • RELIANCE

Customer information packet

EWDM23932T

10HP, 1180RPM, 3PH, 60HZ, 256T, TEFC, F1

Class - None

Division - Not Applicable

Specifications

Enclosure	TEFC
Frame	256T
Frame Material	Steel
Frequency	60.00 Hz
Haz Area Class and Group	None
Haz Area Division	Not Applicable
Motor Letter Type	Three Phase
Output @ Frequency	10.000 HP @ 60 HZ
Phase	3
Synchronous Speed @ Frequency	1200 RPM @ 60 HZ
Voltage @ Frequency	230.0 V @ 60 HZ 460.0 V @ 60 HZ
Agency Approvals	CSA EEV NEMA PREMIUM UR
Ambient Temperature	40 °C
Auxillary Box	No Auxillary Box
Auxillary Box Lead Termination	None
Base Indicator	Rigid
Bearing Grease Type	Polyrex EM (-20F +300F)
Blower	None
Current @ Voltage	30.600 A @ 208.0 V 29.400 A @ 230.0 V 14.700 A @ 460.0 V
Design Code	A
Drip Cover	No Drip Cover
Duty Rating	CONT
Efficiency @ 100% Load	91.0 %
Electrically Isolated Bearing	Not Electrically Isolated
Feedback Device	NO FEEDBACK
Heater Indicator	No Heater
High Voltage Full Load Amps	14.7 a

Part detail

Revision	H
Type	AC
Mech. spec.	
Base	
Status	PRD/A
Elec. spec.	39WGX611
Layout	39LYS015
Eff. date	02-14-2024
CD Diagram	CD0005
Poles	06
Leads	9#12
Proprietary	False
Created date	08-13-2019

Insulation Class	F
Inverter Code	Inverter Duty
IP Rating	IP55
KVA Code	J
Lifting Lugs	Standard Lifting Lugs
Locked Bearing Indicator	Locked Bearing
Max Speed	1800 rpm
Motor Lead Termination	Flying Leads
Motor Standards	NEMA
Motor Type	3956M
Mounting Arrangement	F1
Number of Poles	6
Overall Length	24.57 IN
Power Factor	70
Product Family	Wash Down
Pulley Face Code	Standard
Rodent Screen	None
Service Factor	1.00
Shaft Diameter	1.625 IN
Shaft Ground Indicator	No Shaft Grounding
Shaft Rotation	Reversible
Speed	1180 rpm
Speed Code	Single Speed
Starting Method	Direct on line
Thermal Device - Bearing	None
Thermal Device - Winding	None
Vibration Sensor Indicator	No Vibration Sensor
Winding Thermal 1	None
Winding Thermal 2	None

Nameplate

NP1669L									
CAT.NO.	EWDM23932T								
SPEC.	39-0000-0186								
HP	10								
VOLTS	230/460								
AMP	29.4/14.7								
RPM	1180								
FRAME	256T		HZ	60		PH	3		
SER.F.	1.00	CODE	J	DES	A	CLASS	F		
NEMA-NOM-EFF	91	PF	70						
RATING	40C AMB-CONT								
CC	010A								
DE	6309	ODE	6208						
ENCL	TEFC	SN							
BLANK	20:1 CT/VT								

AC Induction Motor Performance Data

Record # 78156

Typical performance - not guaranteed values

Winding: 39WGX611-R004		Type: 3956M		Enclosure: TEFC	
Nameplate Data			460 V, 60 Hz: High Voltage Connection		
Rated Output (HP)	10	Full Load Torque	44.4 LB-FT		
Volts	230/460	Start Configuration	direct on line		
Full Load Amps	29.4/14.7	Breakdown Torque	146 LB-FT		
R.P.M.	1180	Pull-up Torque	53.5 LB-FT		
Hz	60	Locked-rotor Torque	73.4 LB-FT		
NEMA Design Code	A	Starting Current	95.1 A		
Service Factor (S.F.)	1	No-load Current	7.85 A		
NEMA Nom. Eff.	91	Line-line Res. @ 25°C	0.66 Ω		
Rating - Duty	40C AMB-CONT	Temp. Rise @ Rated Load	45°C		
		Locked-rotor Power Factor	24.2		
		Rotor inertia	4.5 LB-FT ²		

Load Characteristics 460 V, 60 Hz, 10 HP

% of Rated Load	25	50	75	100	125	150
Power Factor	32	52	63	70	72	73
Efficiency	84.1	90	91.5	91.7	91.2	90.4
Speed	1196	1191	1186	1182	1176	1169
Line amperes	8.68	10	12.2	14.6	17.6	21

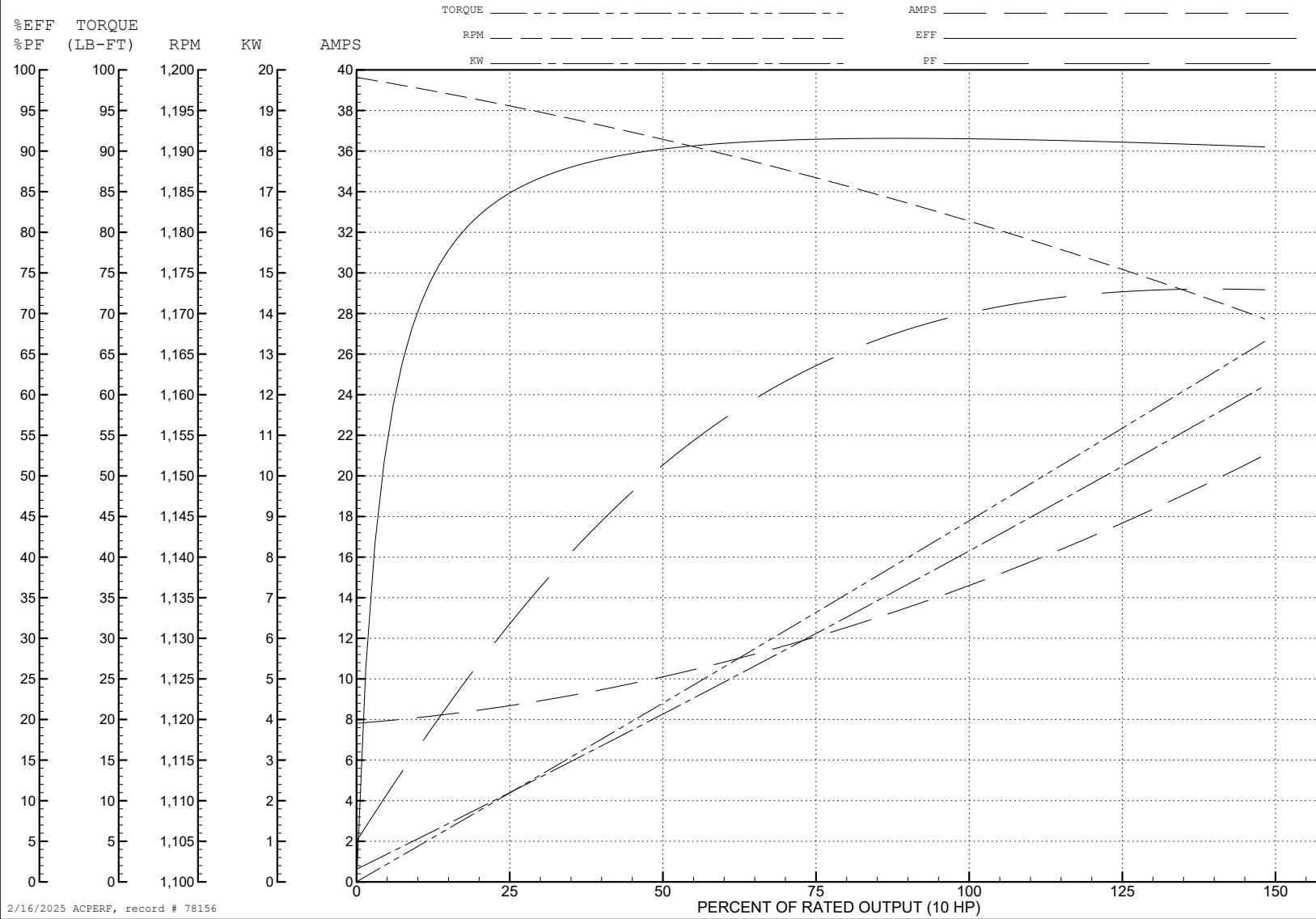
ABB Motors and Mechanical Inc.

WINDING # 39WGx611

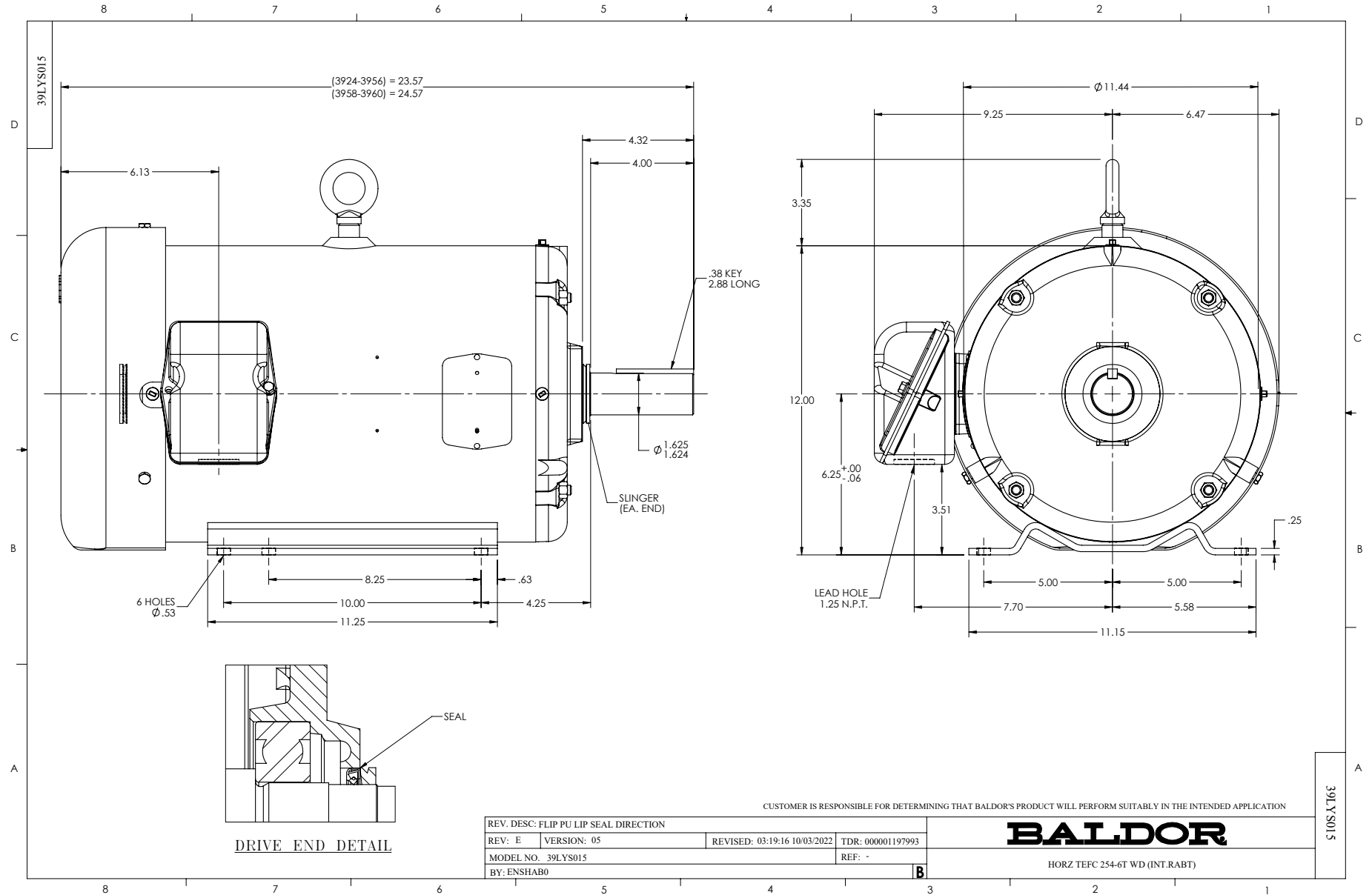
Typical performance - not guaranteed values.

10 HP 3 PH 60 HZ 1180 RPM 460 V 3956M

TORQUES (LB-FT): PO=146 PU=53.5 LR=73.4 LRA=95.1



2/16/2025 ACPERF, record # 78156



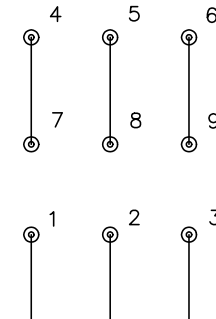
CD0005



LOW VOLTAGE
(2Y)



HIGH VOLTAGE
(1Y)



NOTES:

1. INTERCHANGE ANY TWO LINE LEADS TO REVERSE ROTATION.
2. OPTIONAL THERMOSTATS ARE PROVIDED WHEN SPECIFIED.
3. ACTUAL NUMBER OF INTERNAL PARALLEL CIRCUITS MAY BE A MULTIPLE OF THOSE SHOWN ABOVE.
4. LEAD COLORS ARE OPTIONAL. LEADS MUST ALWAYS BE NUMBERED AS SHOWN.

CD0005

REV. DESC: REVISE TO SHOW OPTIONAL COLORS			
REV. LTR: E	BY: JLP	REVISED: 01/19/99 10:15	TDR: 0171435
S00000		FILE: AAA00005140	MDL: -
		MTL: -	

BALDOR ELECTRIC Co.

3PH, DV, 9 LEADS