



Customer information packet

VESSWDM3615T-5

5HP, 1750RPM, 3PH, 60HZ, 184TC, TEFC, F1

Class - None

Division - Not Applicable

Specifications

Enclosure	TEFC
Frame	184TC
Frame Material	Stainless Steel
Frequency	60.00 Hz
Haz Area Class and Group	None
Haz Area Division	Not Applicable
Motor Letter Type	Three Phase
Output @ Frequency	5.000 HP @ 60 HZ
Phase	3
Synchronous Speed @ Frequency	1800 RPM @ 60 HZ
Voltage @ Frequency	575.0 V @ 60 HZ
Agency Approvals	CSA NEMA PREMIUM UR
Ambient Temperature	40 °C
Auxillary Box	No Auxillary Box
Auxillary Box Lead Termination	None
Base Indicator	No Mounting
Bearing Grease Type	Polyrex EM (-20F +300F)
Blower	None
Current @ Voltage	5.100 A @ 575.0 V
Design Code	B
Drip Cover	No Drip Cover
Duty Rating	CONT
Efficiency @ 100% Load	89.5 %
Electrically Isolated Bearing	Not Electrically Isolated
Feedback Device	NO FEEDBACK
Heater Indicator	No Heater
High Voltage Full Load Amps	5.1 a
Insulation Class	F
Inverter Code	Inverter Ready
IP Rating	IP56

Part detail

Revision	E
Type	AC
Mech. spec.	
Base	
Status	PRD/A
Elec. spec.	36WGR009
Layout	36LYL747
Eff. date	09-29-2022
CD Diagram	CD0006
Poles	04
Leads	3#16
Proprietary	False
Created date	02-11-2019

KVA Code	J
Lifting Lugs	Standard Lifting Lugs
Locked Bearing Indicator	Locked Bearing
Motor Lead Termination	Flying Leads
Motor Standards	NEMA
Mounting Arrangement	F1
Number of Poles	4
Overall Length	18.32 IN
Power Factor	82
Product Family	Wash Down All Stainless Steel
Pulley Face Code	C-Face
Rodent Screen	None
Service Factor	1.15
Shaft Diameter	1.125 IN
Shaft Ground Indicator	No Shaft Grounding
Shaft Rotation	Reversible
Speed	1750 rpm
Speed Code	Single Speed
Starting Method	Direct on line
Thermal Device - Winding	None
Vibration Sensor Indicator	No Vibration Sensor
Winding Thermal 1	None
Winding Thermal 2	None

Nameplate

NP1953B05										
CAT.NO.	VESSWDM3615T-5									
SPEC.	36-0000-0015									
HP	5									
VOLTS	575									
AMP	5.1									
RPM	1750									
FRAME	184TC		HZ	60		PH	3			
SER.F.	1.15	CODE	J	DES	B	CLASS	F			
NEMA-NOM-EFF	89.5	PF	82							
RATING	40C AMB-CONT									
CC	010A	USABLE AT 208V					N/A			
DE	6206	ODE	6205							
ENCL	TEFC	SN								
	4:1CT 20:1VT									

AC Induction Motor Performance Data

Record # 74376

Typical performance - not guaranteed values

Winding: 36WGR009-R001		Type: 3646M		Enclosure: TEFC	
Nameplate Data			575 V, 60 Hz: Single Voltage Motor		
Rated Output (HP)	5	Full Load Torque	15.1 LB-FT		
Volts	575	Start Configuration	direct on line		
Full Load Amps	5.1	Breakdown Torque	48 LB-FT		
R.P.M.	1750	Pull-up Torque	25.1 LB-FT		
Hz	60 Phase	Locked-rotor Torque	30.7 LB-FT		
NEMA Design Code	B KVA Code	Starting Current	36.1 A		
Service Factor (S.F.)	1.15	No-load Current	2.08 A		
NEMA Nom. Eff.	89.5 Power Factor	Line-line Res. @ 25°C	3.73 Ω		
Rating - Duty	40C AMB-CONT	Temp. Rise @ Rated Load	63°C		
S.F. Amps		Temp. Rise @ S.F. Load	78°C		
		Locked-rotor Power Factor	38.7		
		Rotor inertia	0.428 LB-FT ²		

Load Characteristics 575 V, 60 Hz, 5 HP

% of Rated Load	25	50	75	100	125	150	S.F.
Power Factor	46	68	78	83	84	85	84
Efficiency	85.7	90.2	90.4	89.9	88.4	87	89
Speed	1788	1776	1763	1748	1732	1715	1738
Line amperes	2.37	3.05	3.97	5.04	6.32	7.55	5.81

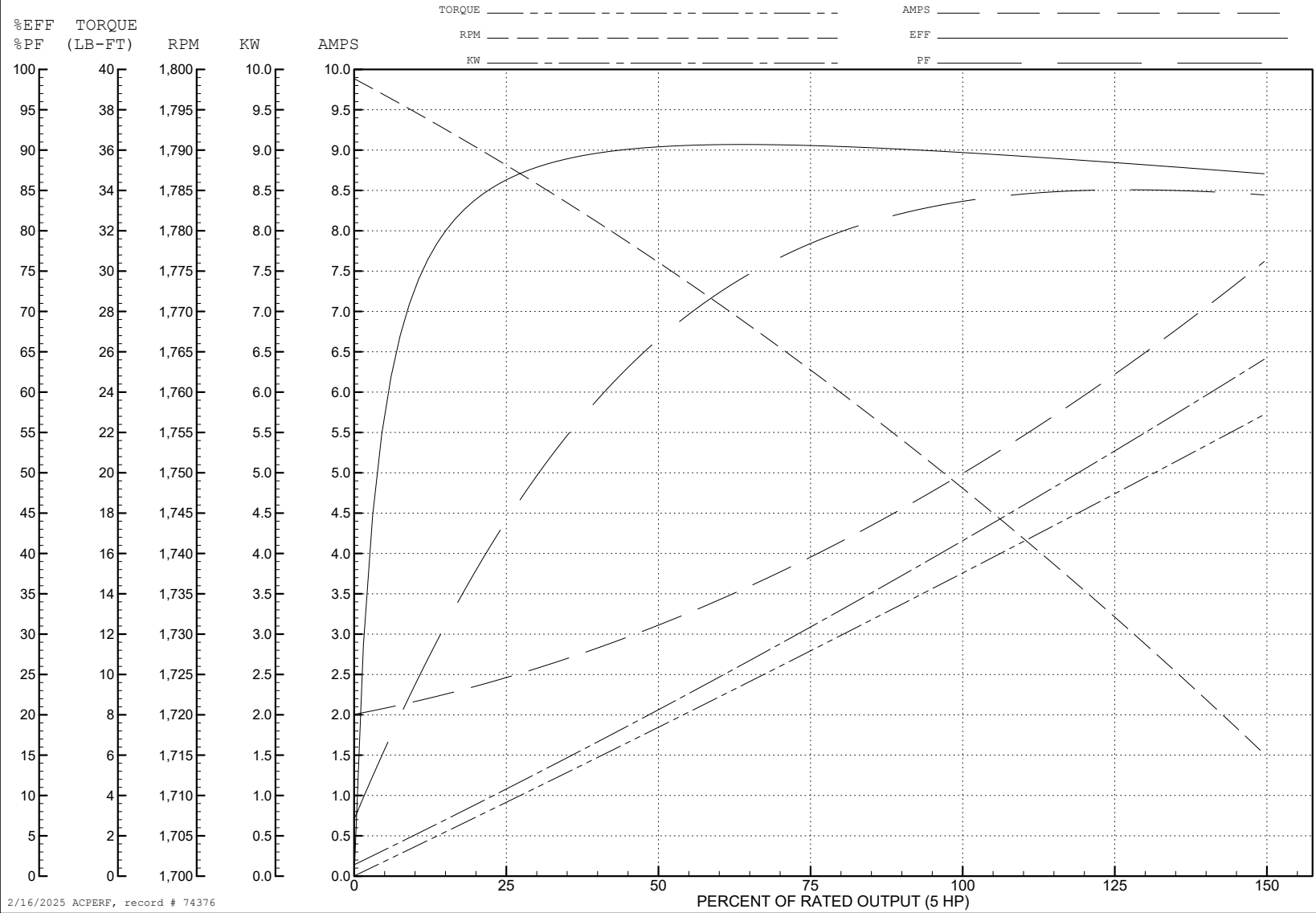
ABB Motors and Mechanical Inc.

WINDING # 36WGR009

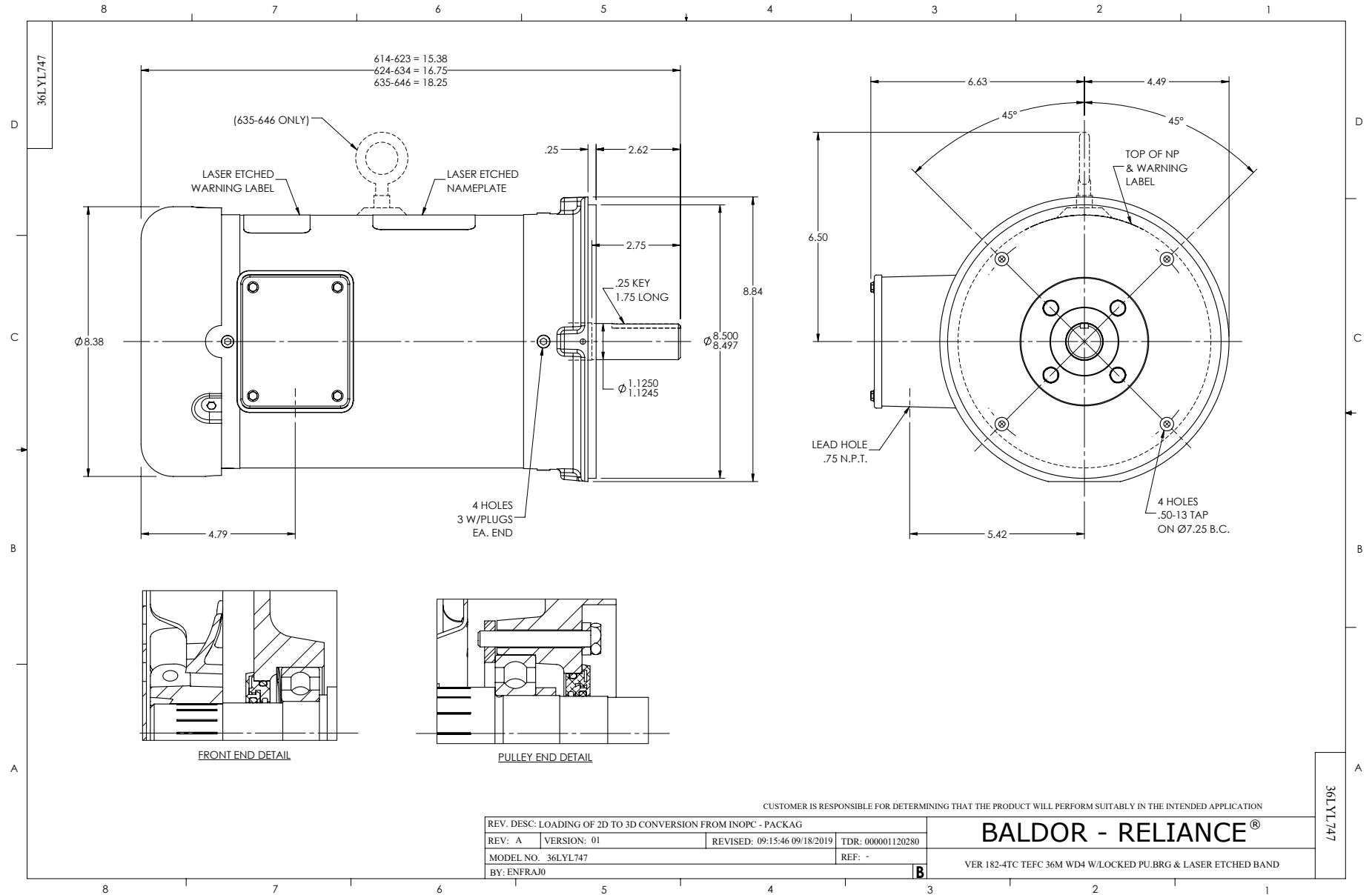
5 HP 3 PH 60 HZ 1750 RPM 575 V 3646M

Typical performance - not guaranteed values.

TORQUES (LB-FT): PO=48 PU=25.1 LR=30.7 LRA=36.1



2/16/2025 ACPERF, record # 74376



CD0006



NOTES:

1. THREE LEAD MOTOR MAY BE EITHER WYE CONNECTED OR DELTA CONNECTED.
2. INTERCHANGE ANY TWO LINE LEADS TO REVERSE ROTATION.
3. OPTIONAL THERMOSTATS ARE PROVIDED WHEN SPECIFIED.
4. ACTUAL NUMBER OF INTERNAL PARALLEL CIRCUITS MAY VARY.
5. LEAD COLORS ARE OPTIONAL. LEADS MUST BE NUMBERED AS SHOWN.

CD0006

REV. DESC: ADD CLASS CONN00000007		
REV. LTR: E	VERSION: 01	TDR: 000001099922
FILE: \AAA\00005\141	REVISED: 10:24:49 02/19/2019	BY: ENBRIRO
MTL: -	© □	

BALDOR - RELIANCE®

3PH, SV, 3 LEADS, WYE OR DELTA CONNECTED

SH 1 of 1