

Specifications

Enclosure	TEFC
Frame	184LP
Frame Material	Iron
Frequency	60.00 Hz
Haz Area Class and Group	CLI GP A,B,C,D
Haz Area Division	Division II
Motor Letter Type	Three Phase
Output @ Frequency	5.000 HP @ 60 HZ
Phase	3
Synchronous Speed @ Frequency	3600 RPM @ 60 HZ
Voltage @ Frequency	460.0 V @ 60 HZ
Agency Approvals	CSA EEV NEMA PREMIUM UR CSA
Ambient Temperature	40 °C
Auxillary Box	No Auxillary Box
Auxillary Box Lead Termination	None
Base Indicator	No Mounting
Bearing Grease Type	Polyrex EM (-20F +300F)
Blower	None
Constant Torque Speed Range	6
Current @ Voltage	5.700 A @ 460.0 V
Design Code	B
Drip Cover	Drip Cover
Duty Rating	CONT
Efficiency @ 100% Load	88.5 %
Electrically Isolated Bearing	Not Electrically Isolated
Enclosure Modification	841
Feedback Device	NO FEEDBACK
Front Shaft Indicator	None
Haz Area Temp Code	T3

Part detail

Revision	J
Type	AC
Mech. spec.	06J487
Base	
Status	PRD/A
Elec. spec.	06WGX822
Layout	06LYJ487
Eff. date	01-11-2024
CD Diagram	CD0006
Poles	02
Leads	3#16
Proprietary	False
Created date	03-27-2019

Heater Indicator	No Heater
High Voltage Full Load Amps	5.7 a
Insulation Class	F
Inverter Code	Inverter Duty
IP Rating	IP56
KVA Code	J
Lifting Lugs	Vertical Lifting Lugs
Locked Bearing Indicator	Locked Bearing
Max Speed	5400 rpm
Motor Lead Quantity/Wire Size	3 @ 16 AWG
Motor Lead Termination	Flying Leads
Motor Standards	NEMA
Motor Type	0642M
Mounting Arrangement	W6
Number of Poles	2
Overall Length	22.68 IN
Power Factor	94
Product Family	Chem Process S/P 32-8 IEEE 841
Pulley End Bearing Type	Ball
Pulley Face Code	P-Base
Pulley Shaft Indicator	P-Base Groove & Key
Rodent Screen	None
Service Factor	1.15
Shaft Diameter	1.125 IN
Shaft Ground Indicator	No Shaft Grounding
Shaft Rotation	Reversible
Shaft Slinger Indicator	No Slinger
Speed	3440 rpm
Speed Code	Single Speed
Starting Method	Direct on line
Thermal Device - Winding	None
Vibration Sensor Indicator	No Vibration Sensor
Winding Thermal 1	None
Winding Thermal 2	None

Nameplate

NP4328									
CAT.NO.	VLECP83663T-4								
SPEC.	06J487X822G1								
HP	5 TE	IP	56						
VOLTS	460								
AMPS	5.7								
R.P.M.	3440								
FRAME	184LP	HZ	60	PH	3				
SER.F.	1.15	CODE	J	DES.	B	CLASS	F		
RATING	40C AMB-CONT								
SN									
DE	6307	ODE	7305						
NEMA NOM. EFF.	88.5	P.F.	94						
GUAR. MIN. EFF.	86.5	CC	010A						
T. CODE	T3	TEMP=	160						

NP3186

SPEC.	06J487X822G1		
ABMA DE BRG	35BC03X30X		
ABMA ODE BRG	25BC03X30X		
GREASE	POLYREX EM		
MOTOR WEIGHT	123	ROTOR BARS	28
		STATOR BARS	36
MAX. R.P.M.	5400	MAX. KVAR	0.15
INV.TYPE	PWM		
T=	160		
CHP	60	TO	90
CT	6	TO	60
VT	3	TO	60
HTR-VOLTS	N/A	HTR-AMPS	N/A
HTR-WATTS	N/A	MAX. SPACE HEATER TEMP.	N/A

AC Induction Motor Performance Data

Record # 59642

Typical performance - not guaranteed values

Winding: 06WGX822-R001		Type: 0642M	Enclosure: TEFC	
Nameplate Data			460 V, 60 Hz: Single Voltage Motor	
Rated Output (HP)	5	Full Load Torque	7.76 LB-FT	
Volts	460	Start Configuration	direct on line	
Full Load Amps	5.7	Breakdown Torque	33.5 LB-FT	
R.P.M.	3440	Pull-up Torque	13.4 LB-FT	
Hz	60 Phase	Locked-rotor Torque	22.9 LB-FT	
NEMA Design Code	B KVA Code	Starting Current	45.4 A	
Service Factor (S.F.)	1.15	No-load Current	1.07 A	
NEMA Nom. Eff.	88.5 Power Factor	Line-line Res. @ 25°C	2.61 Ω	
Rating - Duty	40C AMB-CONT	Temp. Rise @ Rated Load	51°C	
S.F. Amps		Temp. Rise @ S.F. Load	65°C	
		Locked-rotor Power Factor	41.5	
		Rotor inertia	0.188 lb-ft ²	

Load Characteristics 460 V, 60 Hz, 5 HP

% of Rated Load	25	50	75	100	125	150	S.F.
Power Factor	78	90	93	94	93	97	93
Efficiency	90	92	90	89	86	84	87.4
Speed	3559	3523	3481	3439	3384	3327	3406
Line amperes	1.8	2.92	4.25	5.68	7.33	8.75	6.67

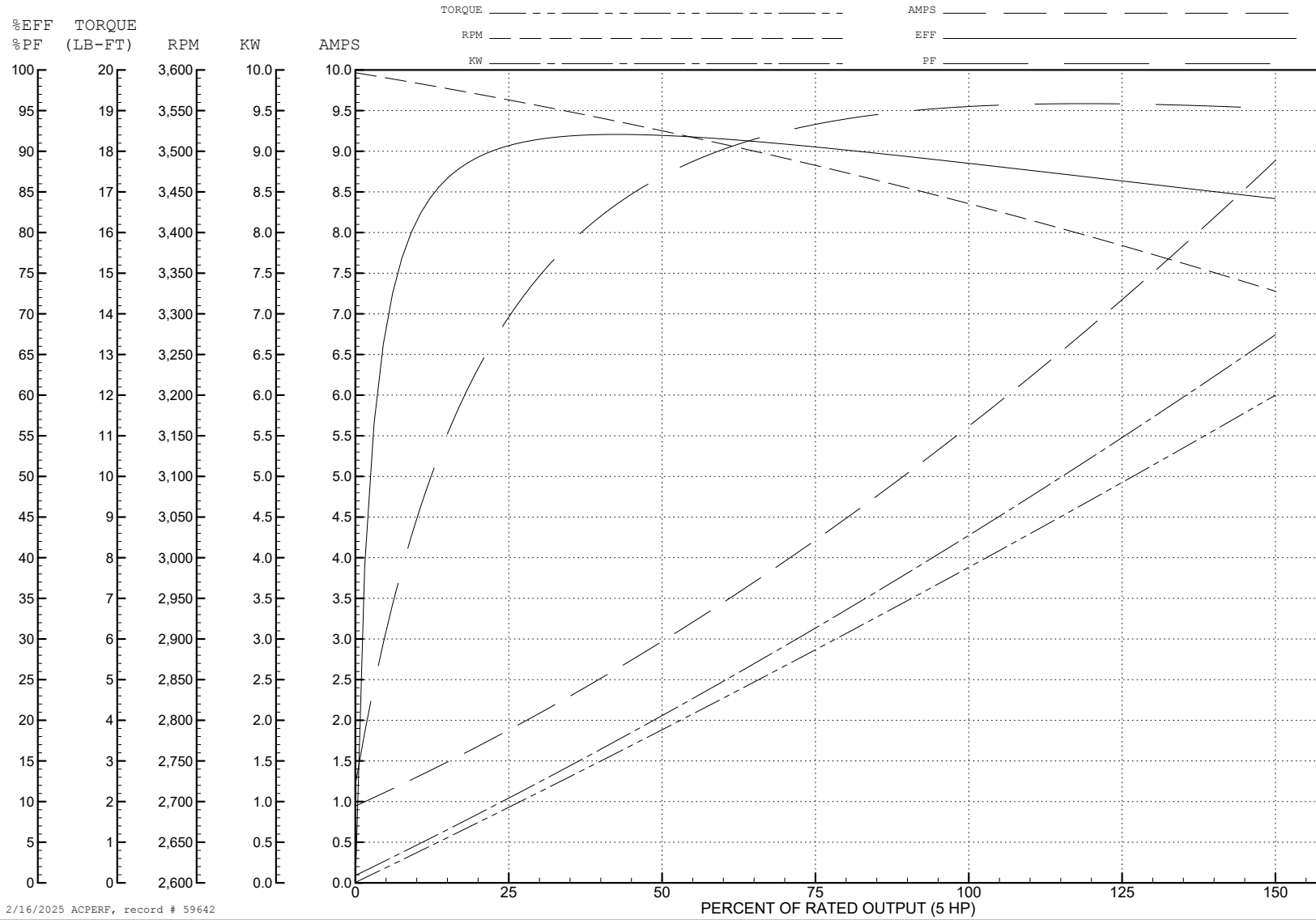
ABB Motors and Mechanical Inc.

WINDING # 06WX822

5 HP 3 PH 60 HZ 3440 RPM 460 V 0642M

Typical performance - not guaranteed values.

TORQUES (LB-FT): PO=33.5 PU=13.4 LR=22.9 LRA=45.4



2/16/2025 ACPERF, record # 59642

AC Induction Motor Performance Data

Record # 59648

Typical performance - not guaranteed values

Winding: 06WGX822-R001		Type: 0642M	Enclosure: TEFC	
Nameplate Data			368 V, 60 Hz: Single Voltage Motor	
Rated Output (HP)	5	Full Load Torque	7.99 LB-FT	
Volts	460	Start Configuration	direct on line	
Full Load Amps	5.7	Breakdown Torque	21.34 LB-FT	
R.P.M.	3440	Pull-up Torque	8.58 LB-FT	
Hz	60 Phase	3	Locked-rotor Torque	14.61 LB-FT
NEMA Design Code	B KVA Code	J	Starting Current	36.32 A
Service Factor (S.F.)		1.15	No-load Current	0.871 A
NEMA Nom. Eff.	88.5 Power Factor	94	Line-line Res. @ 25°C	2.61 Ω
Rating - Duty		40C AMB-CONT	Temp. Rise @ Rated Load	62°C
S.F. Amps			Temp. Rise @ S.F. Load	86°C
			Locked-rotor Power Factor	41.5
			Rotor inertia	0.188 lb-ft ²

Load Characteristics 368 V, 60 Hz, 5 HP

% of Rated Load	25	50	75	100	125	150	S.F.
Power Factor	88	93	94	94	91	90	92
Efficiency	91.7	91	88.4	85.1	80.5	73.9	82.6
Speed	3539	3483	3415	3339	3233	3065	3277
Line amperes	1.98	3.54	5.38	7.46	10.11	13.35	9.04

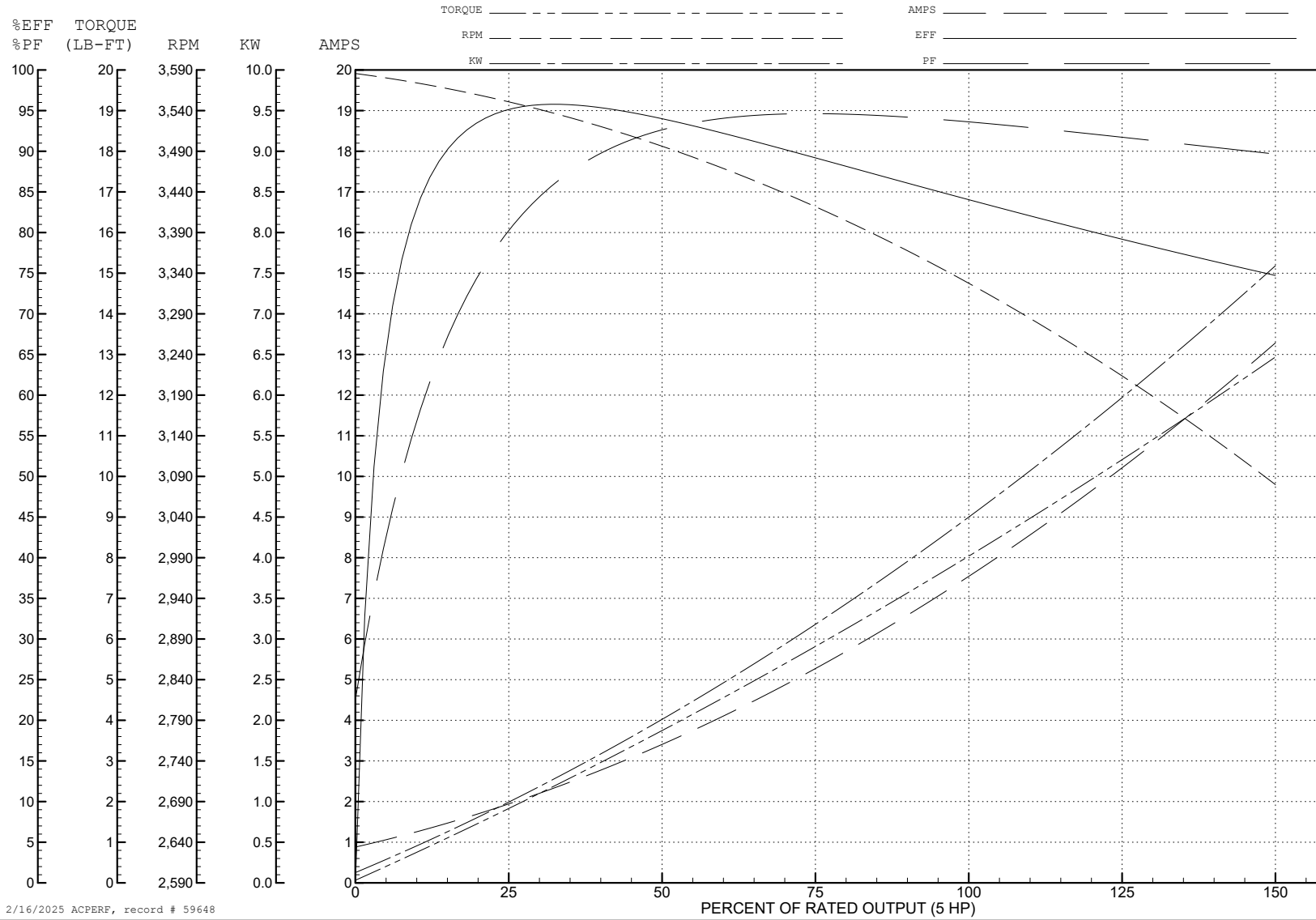
ABB Motors and Mechanical Inc.

WINDING # 06WGX822

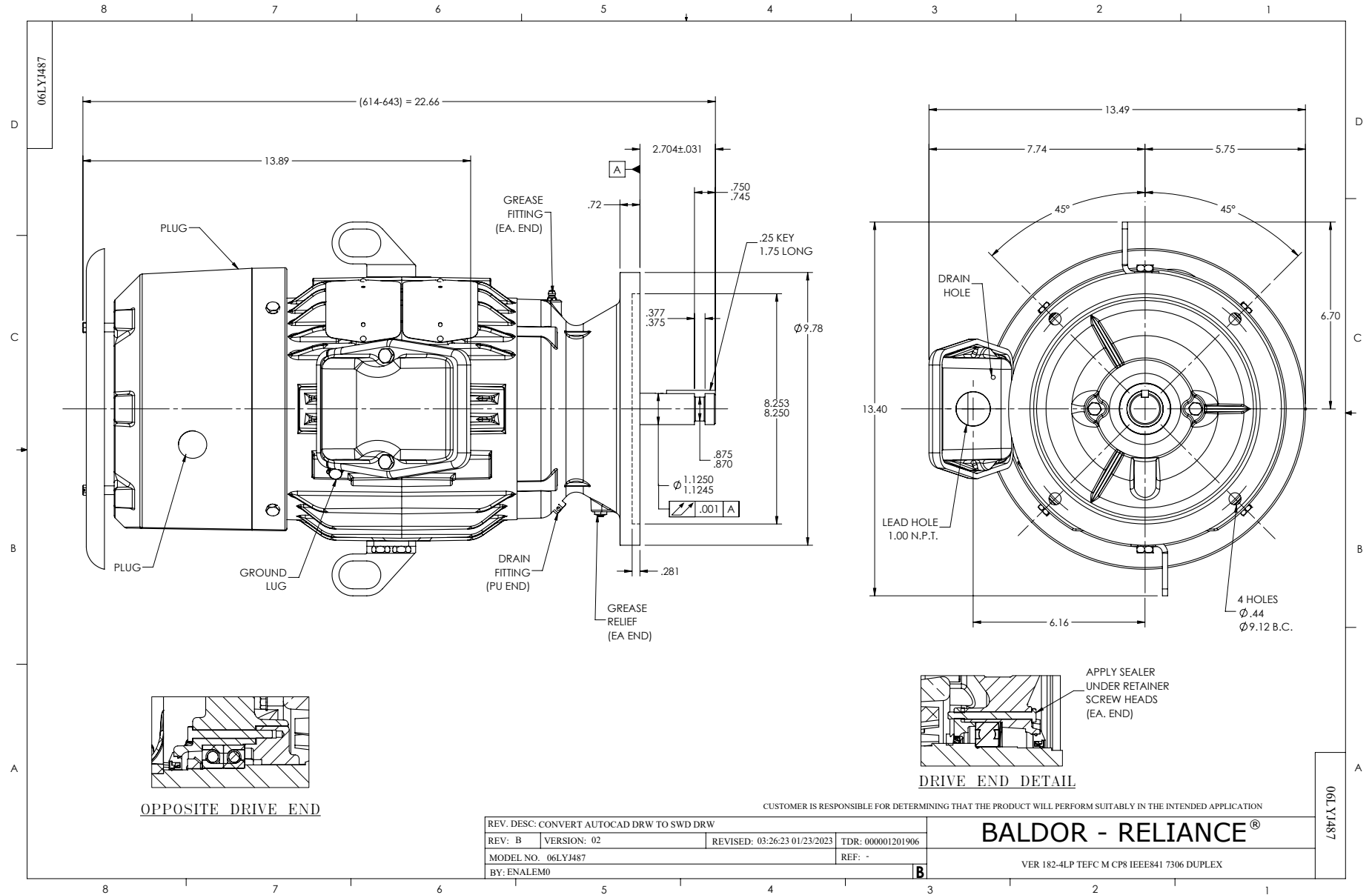
5 HP 3 PH 60 HZ 3440 RPM 368 V 0642M

Typical performance - not guaranteed values.

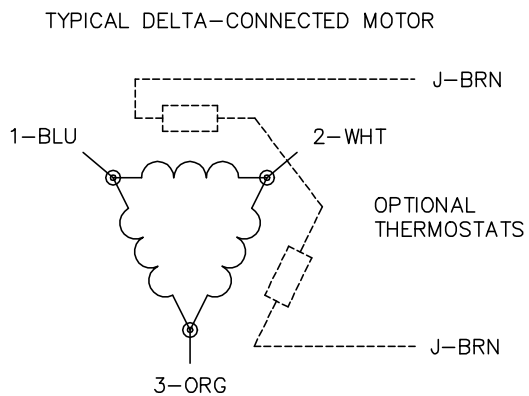
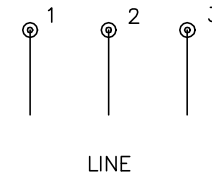
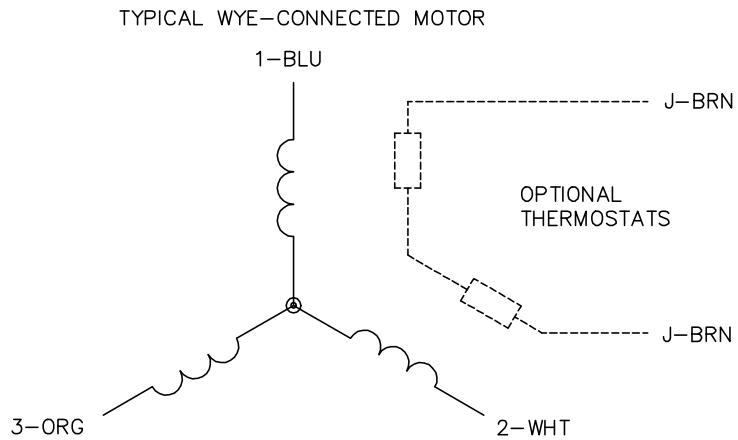
TORQUES (LB-FT): PO=21.34 PU=8.58 LR=14.61 LRA=36.32



2/16/2025 ACPERF, record # 59648



CD0006



NOTES:

1. THREE LEAD MOTOR MAY BE EITHER WYE CONNECTED OR DELTA CONNECTED.
2. INTERCHANGE ANY TWO LINE LEADS TO REVERSE ROTATION.
3. OPTIONAL THERMOSTATS ARE PROVIDED WHEN SPECIFIED.
4. ACTUAL NUMBER OF INTERNAL PARALLEL CIRCUITS MAY VARY.
5. LEAD COLORS ARE OPTIONAL. LEADS MUST BE NUMBERED AS SHOWN.

CD0006

REV. DESC: ADD CLASS CONN00000007		
REV. LTR: E	VERSION: 01	TDR: 000001099922
FILE: \AAA\00005\141	REVISED: 10:24:49 02/19/2019	BY: ENBRIRO
MTL: -	© □	

BALDOR - RELIANCE®

3PH, SV, 3 LEADS, WYE OR DELTA CONNECTED

SH 1 of 1