

BALDOR • RELIANCE

Customer information packet

VLECP84106T-4

20HP, 3510RPM, 3PH, 60HZ, 256LP, TEFC, V1

Class - CLI GP A,B,C,D

Division - Division II

Specifications

Enclosure	TEFC
Frame	256LP
Frame Material	Iron
Frequency	60.00 Hz
Haz Area Class and Group	CLI GP A,B,C,D
Haz Area Division	Division II
Motor Letter Type	Three Phase
Output @ Frequency	20.000 HP @ 60 HZ
Phase	3
Synchronous Speed @ Frequency	3600 RPM @ 60 HZ
Voltage @ Frequency	460.0 V @ 60 HZ
Agency Approvals	CCSA US CSA EEV NEMA PREMIUM UR
Ambient Temperature	40 °C
Auxillary Box	No Auxillary Box
Auxillary Box Lead Termination	None
Base Indicator	No Mounting
Bearing Grease Type	Polyrex EM (-20F +300F)
Blower	None
Constant Torque Speed Range	6
Current @ Voltage	22.000 A @ 460.0 V
Design Code	B
Drip Cover	Drip Cover
Duty Rating	CONT
Efficiency @ 100% Load	91.0 %
Electrically Isolated Bearing	Not Electrically Isolated
Enclosure Modification	841
Feedback Device	NO FEEDBACK
Haz Area Temp Code	T3
Heater Indicator	No Heater

Part detail

Revision	N
Type	AC
Mech. spec.	
Base	
Status	PRD/A
Elec. spec.	09WGT034
Layout	09LY-000-166
Eff. date	02-01-2024
CD Diagram	CD0006
Poles	02
Leads	3#12
Proprietary	False
Created date	03-27-2019

High Voltage Full Load Amps	22.0 a
Insulation Class	F
Inverter Code	Inverter Duty
IP Rating	IP56
KVA Code	G
Lifting Lugs	Vertical Lifting Lugs
Locked Bearing Indicator	Locked Bearing
Max Speed	5400 rpm
Motor Lead Termination	Ring Terminals
Motor Standards	NEMA
Motor Type	0954M
Mounting Arrangement	V1
Number of Poles	2
Overall Length	29.53 IN
Power Factor	91
Product Family	Chem Process S/P 32-8 IEEE 841
Pulley Face Code	P-Base
Rodent Screen	None
Service Factor	1.15
Shaft Diameter	1.625 IN
Shaft Ground Indicator	No Shaft Grounding
Shaft Rotation	Reversible
Speed	3510 rpm
Speed Code	Single Speed
Starting Method	Direct on line
Thermal Device - Winding	None
Vibration Sensor Indicator	No Vibration Sensor
Winding Thermal 1	None
Winding Thermal 2	None

Nameplate

NP4332

STK.NO.	VLECP84106T-4	P/N		ENCLOSURE	TEFC
SPEC.	09-0000-1154	CC	010A	FRAME	256LP
HP	20	CLASS	F	HZ	60
RPM	3510	RPM MAX	5400	ODE BRG	7308
VOLT	460	PH	3	DE BRG	6213
AMP	22	DES	B	D.E. BRG.	65BC02X30X
RATING	40C AMB-CONT	PH	3	D.E. BRG.	65BC02X30X
NEMA-NOM-EFF	91	KVA-CODE	G	O.D.E. BRG.	40BT03X30X
G.MIN.EFF	89.5	MOTOR WEIGHT	315	GREASE	POLYREX EM
TEMP CODE	T3	MAX. KVAR	2	BLANK	
TEMP =	200	# OF ROTOR BARS	28	IP	56
CT HZ FROM	1.5	# OF STATOR SLOTS	36	INV.TYPE	PWM
HTR-VOLTS		PF	91		
HTR-AMPS		INVERTER-TEMP-CODE	200		
HTR-WATTS		C HP FR	60		
MAX. SPACE HEATER TEMP.		C HP TO	90		
VT HZ FROM	0-				
VT HZ TO	60				

AC Induction Motor Performance Data

Record # 46537

Typical performance - not guaranteed values

Winding: 09WGT034-R003		Type: 0954M	Enclosure: TEFC	
Nameplate Data			460 V, 60 Hz: Single Voltage Motor	
Rated Output (HP)	20	Full Load Torque	30.1 LB-FT	
Volts	460	Start Configuration	direct on line	
Full Load Amps	22	Breakdown Torque	101 LB-FT	
R.P.M.	3510	Pull-up Torque	33.7 LB-FT	
Hz	60 Phase	3	Locked-rotor Torque	43.9 LB-FT
NEMA Design Code	B KVA Code	G	Starting Current	145 A
Service Factor (S.F.)		1.15	No-load Current	4.81 A
NEMA Nom. Eff.	91 Power Factor	91	Line-line Res. @ 25°C	0.45009 Ω
Rating - Duty		40C AMB-CONT	Temp. Rise @ Rated Load	68°C
S.F. Amps			Temp. Rise @ S.F. Load	87°C
			Locked-rotor Power Factor	27
			Rotor inertia	1.38 LB-FT ²

Load Characteristics 460 V, 60 Hz, 20 HP

% of Rated Load	25	50	75	100	125	150	S.F.
Power Factor	72	87	91	91	92	92	92
Efficiency	91.4	93.3	93	92	90.6	88.9	91.2
Speed	3579.7	3560.2	3538.1	3514.3	3486.6	3454.4	3498
Line amperes	7.42	11.8	16.7	22.4	28.4	34.7	26

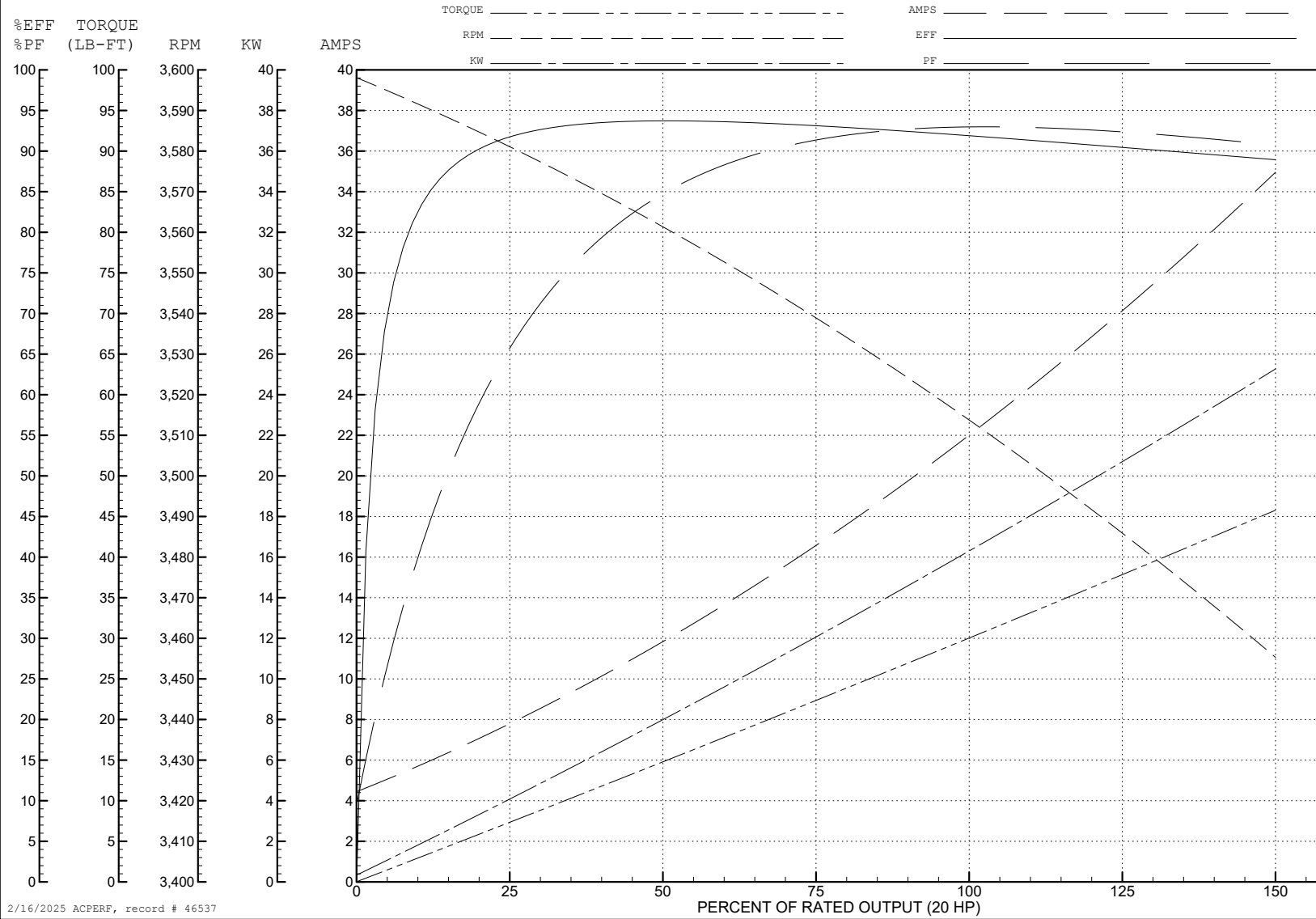
ABB Motors and Mechanical Inc.

WINDING # 09WGT034

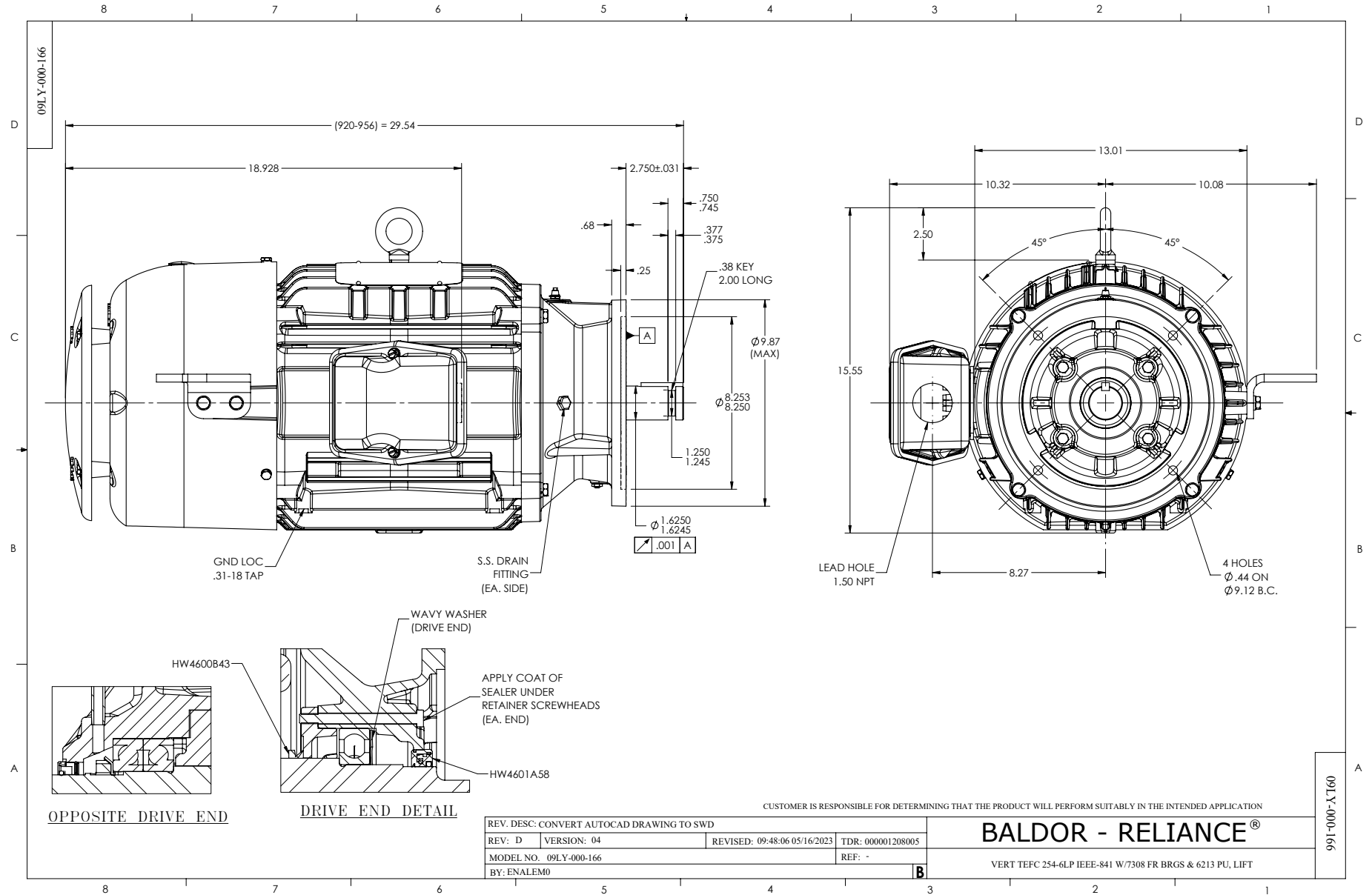
20 HP 3 PH 60 HZ 3510 RPM 460 V 0954M

Typical performance - not guaranteed values.

TORQUES (LB-FT): PO=101 PU=33.7 LR=43.9 LRA=145



2/16/2025 ACPERF, record # 46537



CD0006



NOTES:

1. THREE LEAD MOTOR MAY BE EITHER WYE CONNECTED OR DELTA CONNECTED.
2. INTERCHANGE ANY TWO LINE LEADS TO REVERSE ROTATION.
3. OPTIONAL THERMOSTATS ARE PROVIDED WHEN SPECIFIED.
4. ACTUAL NUMBER OF INTERNAL PARALLEL CIRCUITS MAY VARY.
5. LEAD COLORS ARE OPTIONAL. LEADS MUST BE NUMBERED AS SHOWN.

CD0006

REV. DESC: ADD CLASS CONN00000007		
REV. LTR: E	VERSION: 01	TDR: 000001099922
FILE: \AAA\00005\141	REVISED: 10:24:49 02/19/2019	BY: ENBRIRO
MTL: -	© □	

BALDOR - RELIANCE®

3PH, SV, 3 LEADS, WYE OR DELTA CONNECTED

SH 1 of 1