

BALDOR • RELIANCE

Customer information packet

VPECP84114T-4

50HP, 3530RPM, 3PH, 60HZ, 326VP, 1266M, TEFC, V

Class - CLI GP A,B,C,D

Division - Division II

Specifications

Enclosure	TEFC
Frame	326LP
Frame Material	Iron
Frequency	60.00 Hz
Haz Area Class and Group	CLI GP A,B,C,D
Haz Area Division	Division II
Motor Letter Type	Three Phase
Output @ Frequency	50.000 HP @ 60 HZ
Phase	3
Synchronous Speed @ Frequency	3600 RPM @ 60 HZ
Voltage @ Frequency	460.0 V @ 60 HZ
Agency Approvals	UR NEMA PREMIUM CSA EEV CCSA US
Ambient Temperature	40 °C
Auxillary Box	No Auxillary Box
Auxillary Box Lead Termination	None
Base Indicator	No Mounting
Bearing Grease Type	Polyrex EM (-20F +300F)
Blower	None
Constant Torque Speed Range	6
Current @ Voltage	55.000 A @ 460.0 V
Design Code	B
Drip Cover	Drip Cover
Duty Rating	CONT
Efficiency @ 100% Load	93.0 %
Electrically Isolated Bearing	Not Electrically Isolated
Enclosure Modification	841
Feedback Device	NO FEEDBACK
Haz Area Temp Code	T3
Heater Indicator	No Heater

Part detail

Revision	M
Type	AC
Mech. spec.	
Base	
Status	PRD/A
Elec. spec.	12WGY668
Layout	12LY-000-261
Eff. date	12-03-2024
CD Diagram	CD0006
Poles	02
Leads	3#8
Proprietary	False
Created date	07-09-2019

High Voltage Full Load Amps	55.0 a
Insulation Class	F
Inverter Code	Inverter Duty
IP Rating	IP56
KVA Code	F
Lifting Lugs	Vertical Lifting Lugs
Locked Bearing Indicator	Locked Bearing
Max Speed	5400 rpm
Motor Lead Termination	Ring Terminals
Motor Standards	NEMA
Motor Type	1266M
Mounting Arrangement	V1
Number of Poles	2
Overall Length	38.56 IN
Power Factor	92
Product Family	Chem Process S/P 32-8 IEEE 841
Pulley Face Code	P-Base
Rodent Screen	None
Service Factor	1.15
Shaft Diameter	2.125 IN
Shaft Ground Indicator	No Shaft Grounding
Shaft Rotation	Reversible
Speed	3530 rpm
Speed Code	Single Speed
Starting Method	Direct on line
Thermal Device - Bearing	None
Thermal Device - Winding	None
Vibration Sensor Indicator	No Vibration Sensor
Winding Thermal 1	None
Winding Thermal 2	None

Nameplate

NP4332

STK.NO.	VPECP84114T-4	P/N		ENCLOSURE	TEFC
SPEC.	12-0000-0805	CC	010A	FRAME	326VP
HP	50	CLASS	F	HZ	60
RPM	3530	RPM MAX	5400	ODE BRG	SPL
VOLT	460	PH	3	DE BRG	6312
AMP	55	DES	B	D.E. BRG.	60BC03X30X
RATING	40C AMB-CONT	KVA-CODE	F	O.D.E. BRG.	BA2B459309
NEMA-NOM-EFF	93	MOTOR WEIGHT	784	GREASE	POLYREX EM
G.MIN.EFF	91.7	MAX. KVAR	3.9	BLANK	
TEMP CODE	T3	# OF ROTOR BARS	28	SER.F.	1.15
TEMP =	200	# OF STATOR SLOTS	36	IP	56
CT HZ FROM	0-	PF	92	INV.TYPE	PWM
HTR-VOLTS		INVERTER-TEMP-CODE	200		
HTR-AMPS		C HP FR	60	C HP TO	90
HTR-WATTS		CT HZ TO	60		
MAX. SPACE HEATER TEMP.				VT HZ FROM	0-
				VT HZ TO	60

AC Induction Motor Performance Data

Record # 47226

Typical performance - not guaranteed values

Winding: 12WGY668-R019		Type: 1266M	Enclosure: TEFC		
Nameplate Data			460 V, 60 Hz: Single Voltage Motor		
Rated Output (HP)	50	Full Load Torque	74.5 LB-FT		
Volts	460	Start Configuration	direct on line		
Full Load Amps	55	Breakdown Torque	223 LB-FT		
R.P.M.	3530	Pull-up Torque	79.4 LB-FT		
Hz	60	Phase	3	Locked-rotor Torque	99 LB-FT
NEMA Design Code	B	KVA Code	F	Starting Current	350 A
Service Factor (S.F.)	1.15	No-load Current	11 A		
NEMA Nom. Eff.	93	Power Factor	92	Line-line Res. @ 25°C	0.113 Ω
Rating - Duty	40C AMB-CONT		Temp. Rise @ Rated Load	78°C	
S.F. Amps			Temp. Rise @ S.F. Load	98°C	
			Locked-rotor Power Factor	20.1	
			Rotor inertia	5.16 lb-ft ²	

Load Characteristics 460 V, 60 Hz, 50 HP

% of Rated Load	25	50	75	100	125	150	S.F.
Power Factor	75	87	91	91	92	90	92
Efficiency	90.9	93.3	93.6	92.9	92	90.6	92.4
Speed	3583	3566	3549	3530	3510	3486	3518
Line amperes	17.7	28.8	41.5	55.2	69.5	85.6	63.8

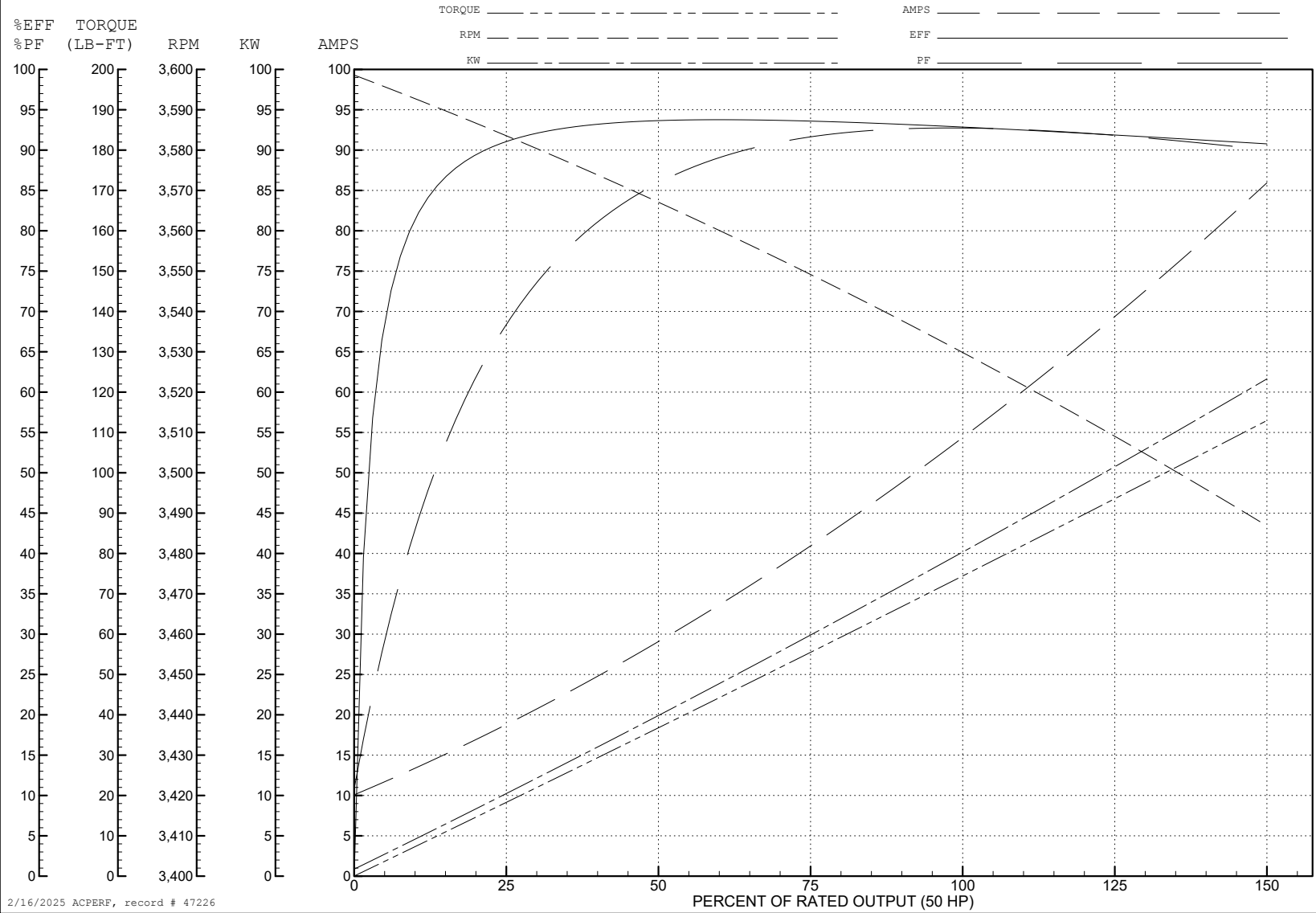
ABB Motors and Mechanical Inc.

WINDING # 12WGY668

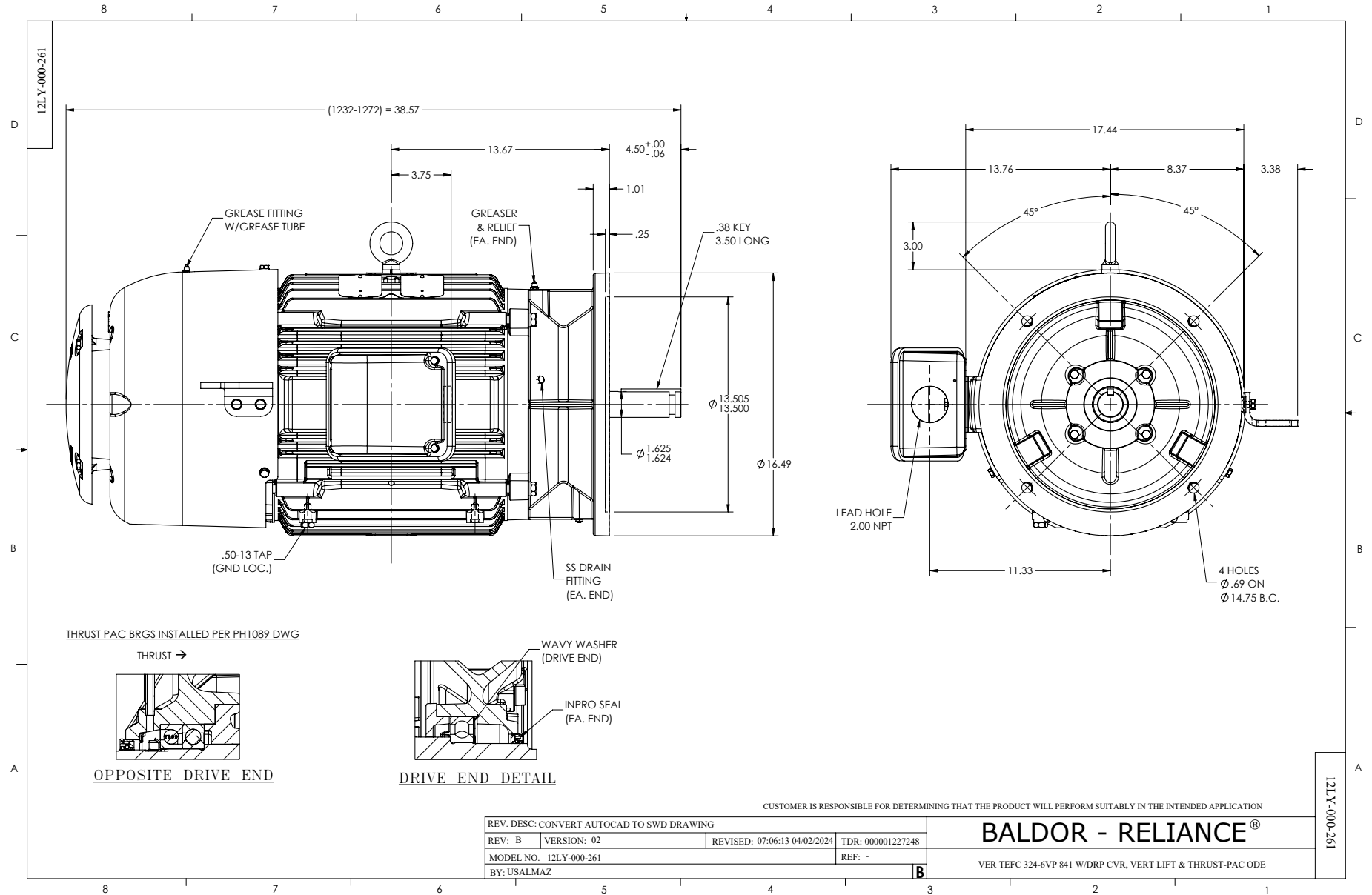
Typical performance - not guaranteed values.

50 HP 3 PH 60 HZ 3530 RPM 460 V 1266M

TORQUES (LB-FT): PO=223 PU=79.4 LR=99 LRA=350



2/16/2025 ACPERF, record # 47226



CD0006



NOTES:

1. THREE LEAD MOTOR MAY BE EITHER WYE CONNECTED OR DELTA CONNECTED.
2. INTERCHANGE ANY TWO LINE LEADS TO REVERSE ROTATION.
3. OPTIONAL THERMOSTATS ARE PROVIDED WHEN SPECIFIED.
4. ACTUAL NUMBER OF INTERNAL PARALLEL CIRCUITS MAY VARY.
5. LEAD COLORS ARE OPTIONAL. LEADS MUST BE NUMBERED AS SHOWN.

CD0006

REV. DESC: ADD CLASS CONN00000007		
REV. LTR: E	VERSION: 01	TDR: 000001099922
FILE: \AAA\00005\141	REVISED: 10:24:49 02/19/2019	BY: ENBRIRO
MTL: -	© □	

BALDOR - RELIANCE®

3PH, SV, 3 LEADS, WYE OR DELTA CONNECTED

SH 1 of 1