

BALDOR® • RELIANCE®

Customer information packet

09G947Y208G1

30 AIR OVERHP, 1760RPM, 3PH, 60HZ, 286T, 0964

Class - None

Division - Not Applicable

Specifications

Enclosure	TEAO
Frame	286T
Frame Material	Iron
Frequency	60.00 Hz
Haz Area Class and Group	None
Haz Area Division	Not Applicable
Motor Letter Type	Three Phase
Output @ Frequency	30.000 HP @ 60 HZ
Phase	3
Synchronous Speed @ Frequency	1800 RPM @ 60 HZ
Voltage @ Frequency	230.0 V @ 60 HZ 460.0 V @ 60 HZ
Agency Approvals	CSA UR
Ambient Temperature	40 °C
Auxillary Box	No Auxillary Box
Auxillary Box Lead Termination	None
Base Indicator	Rigid
Bearing Grease Type	Polyrex EM (-20F +300F)
Blower	None
Current @ Voltage	77.400 A @ 208.0 V 72.000 A @ 230.0 V 36.000 A @ 460.0 V
Design Code	B
Drip Cover	No Drip Cover
Duty Rating	CONT
Efficiency @ 100% Load	92.4 %
Electrically Isolated Bearing	Not Electrically Isolated
Feedback Device	NO FEEDBACK
Front Face Code	Standard
Front Shaft Indicator	None
Heater Indicator	No Heater

Part detail

Revision	AC
Type	AC
Mech. spec.	09G947
Base	
Status	PRD/A
Elec. spec.	09WGY208
Layout	09LYG947
Eff. date	11-14-2023
CD Diagram	CD0005
Poles	04
Leads	9#8
Proprietary	False
Created date	01-01-0001

High Voltage Full Load Amps	36.0 a
Insulation Class	F
Inverter Code	Not Inverter
KVA Code	H
Lifting Lugs	Vertical Lifting Lugs
Locked Bearing Indicator	Locked Bearing
Motor Lead Exit	Ko Box
Motor Lead Quantity/Wire Size	9 @ 8 AWG
Motor Lead Termination	Flying Leads
Motor Standards	NEMA
Motor Type	0964M
Mounting Arrangement	F1
Number of Poles	4
Overall Length	25.87 IN
Power Factor	84
Product Family	Chemical Processing (Not DC)
Pulley End Bearing Type	Sealed Bearing
Pulley Face Code	Standard
Pulley Shaft Indicator	Tapped & Key
Rodent Screen	None
Service Factor	1.15
Shaft Diameter	1.875 IN
Shaft Extension Location	Pulley End
Shaft Ground Indicator	No Shaft Grounding
Shaft Rotation	Reversible
Shaft Slinger Indicator	Shaft Slinger
Speed	1760 rpm
Speed Code	Single Speed
Starting Method	Direct on line
Thermal Device - Bearing	None
Thermal Device - Winding	None
Vibration Sensor Indicator	No Vibration Sensor
Winding Thermal 1	None
Winding Thermal 2	None

Nameplate

NP1258									
CAT.NO.									
SPEC.	09G947Y208G1								
HP	30 AIR OVER								
VOLTS	230/460								
AMP	72/36								
RPM	1760								
FRAME	286T	HZ	60	PH	3				
SER.F.	1.15	CODE	H	DES	B	CL	F		
NEMA-NOM-EFF	92.4	PF	84						
RATING	40C AMB-CONT								
CC									
DE	6311	ODE	6208						
ENCL	TEAO	SN							
	1800 FPM @ 250 CFM								

AC Induction Motor Performance Data

Record # 1900

Typical performance - not guaranteed values

Winding: 09WGY208-R001		Type: 0964M		Enclosure: TEFC	
Nameplate Data			460 V, 60 Hz: High Voltage Connection		
Rated Output (HP)	30	Full Load Torque	88.9 LB-FT		
Volts	230/460	Start Configuration	direct on line		
Full Load Amps	72/36	Breakdown Torque	270 LB-FT		
R.P.M.	1760	Pull-up Torque	117 LB-FT		
Hz	60	Locked-rotor Torque	192 LB-FT		
NEMA Design Code	B	Starting Current	259 A		
Service Factor (S.F.)	1.15	No-load Current	12.7 A		
NEMA Nom. Eff.	92.4	Line-line Res. @ 25°C	0.257 Ω		
Rating - Duty	40C AMB-CONT	Temp. Rise @ Rated Load	68°C		
S.F. Amps		Temp. Rise @ S.F. Load	84°C		
		Locked-rotor Power Factor	30		
		Rotor inertia	2.8 LB-FT ²		

Load Characteristics 460 V, 60 Hz, 30 HP

% of Rated Load	25	50	75	100	125	150	S.F.
Power Factor	51	73	81	84	86	86	85
Efficiency	88.9	92.7	93.2	92.8	92	90.9	92.3
Speed	1791	1782	1772	1761	1749	1736	1754
Line amperes	15	20.7	27.5	35.8	44.1	53.4	40.78

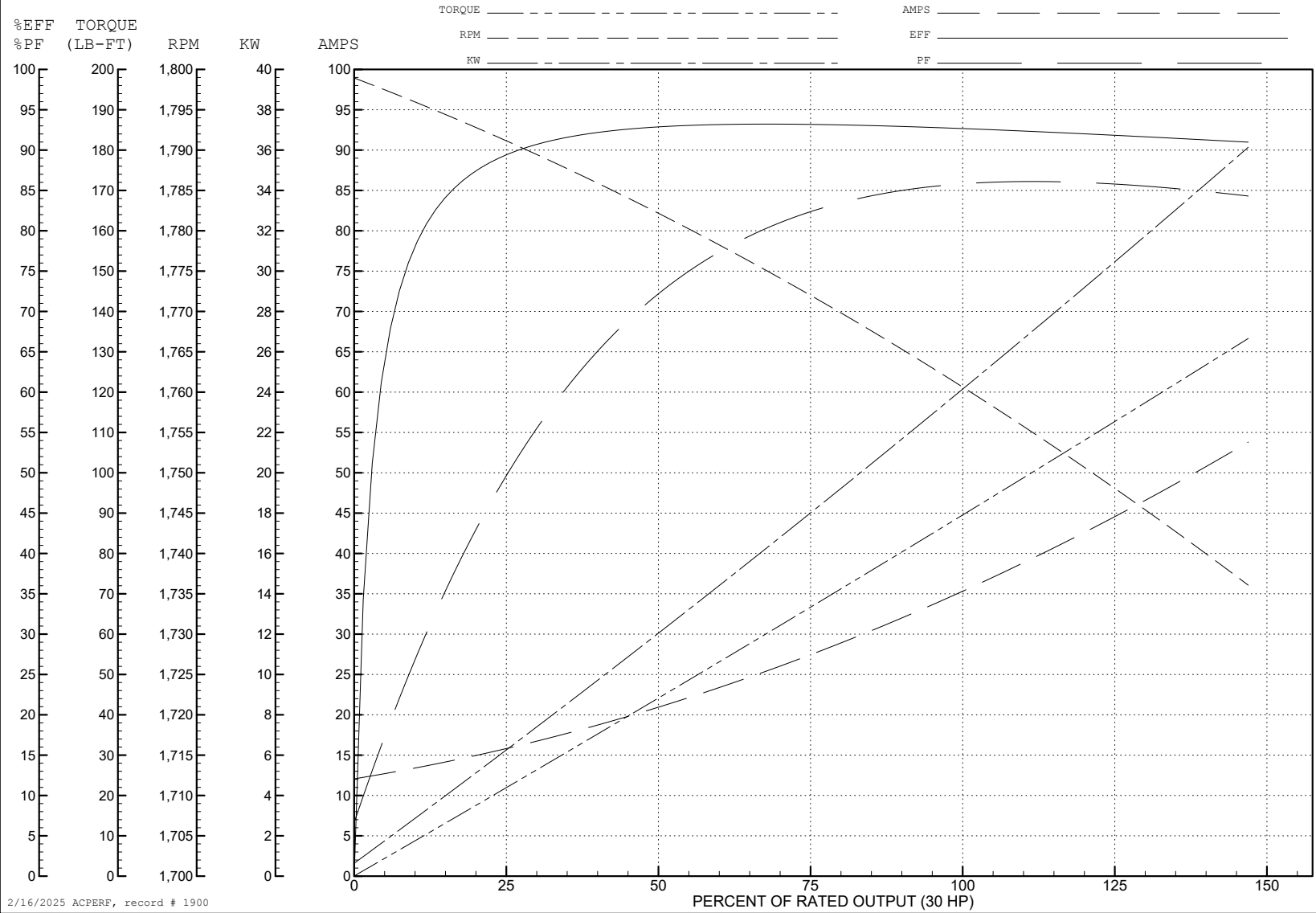
ABB Motors and Mechanical Inc.

WINDING # 09WGY208

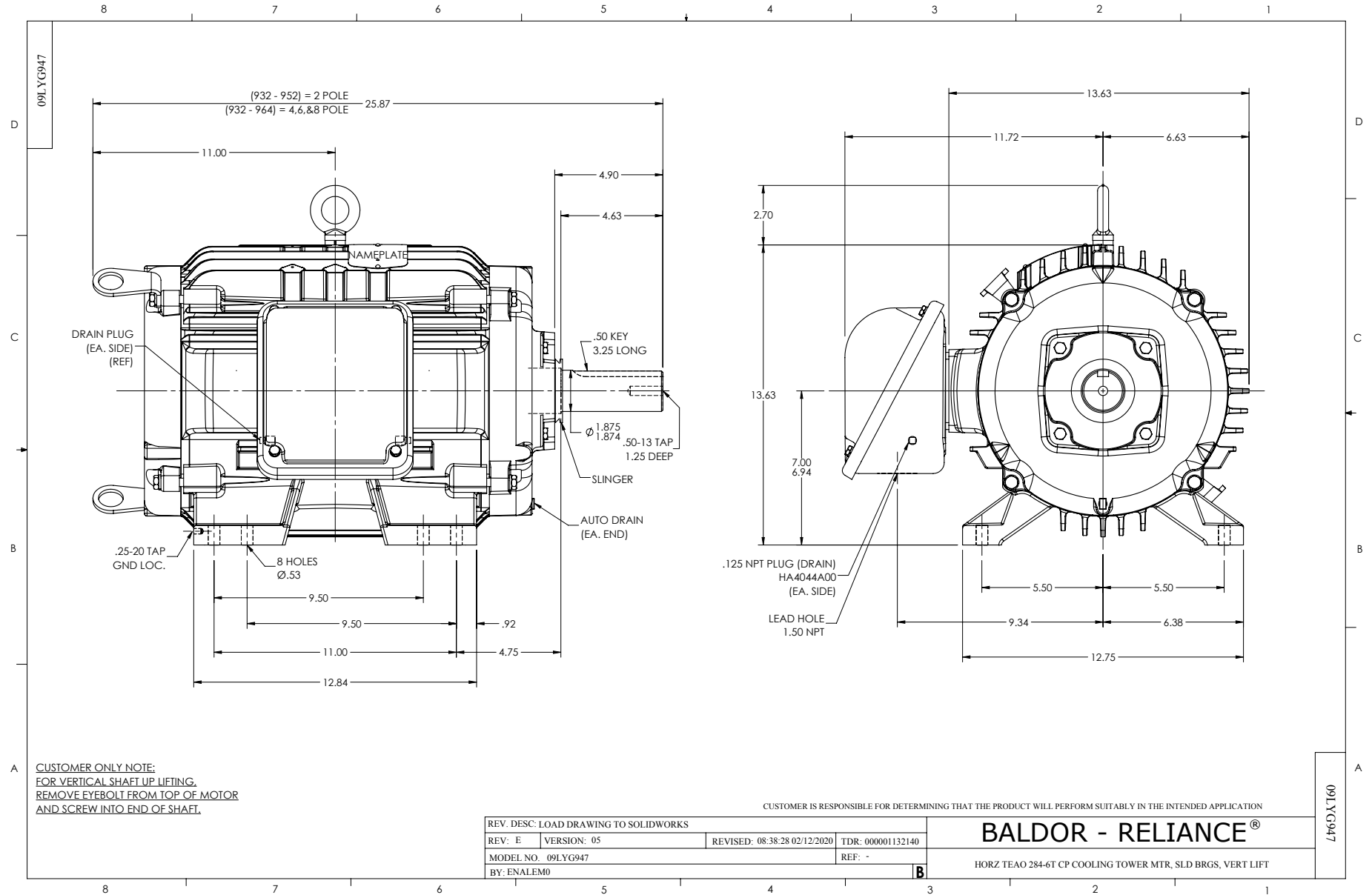
Typical performance - not guaranteed values.

30 HP 3 PH 60 HZ 1760 RPM 460 V 0964M

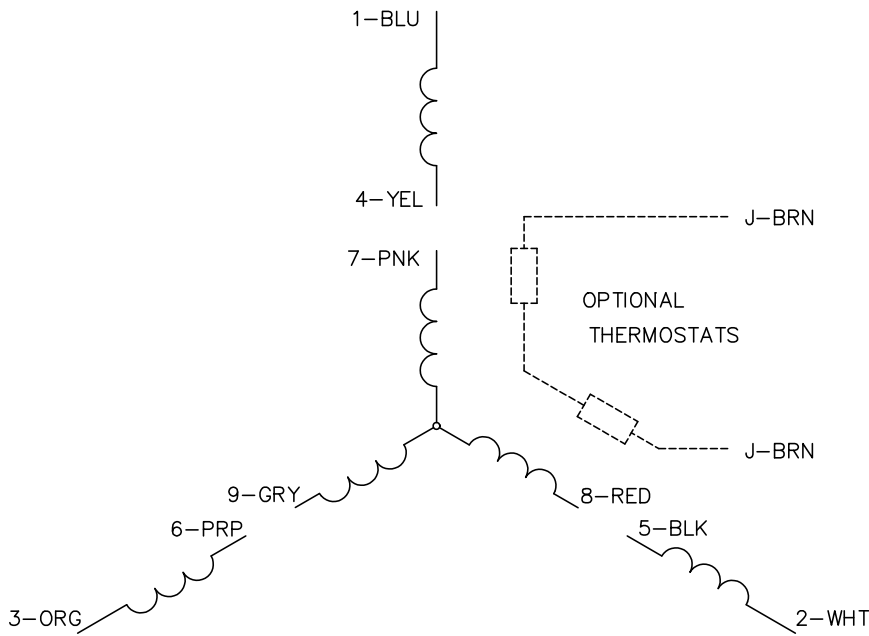
TORQUES (LB-FT): PO=270 PU=117 LR=192 LRA=259



2/16/2025 ACPERF, record # 1900



CD0005



LOW VOLTAGE
(2Y)



LINE

HIGH VOLTAGE
(1Y)



LINE

NOTES:

1. INTERCHANGE ANY TWO LINE LEADS TO REVERSE ROTATION.
2. OPTIONAL THERMOSTATS ARE PROVIDED WHEN SPECIFIED.
3. ACTUAL NUMBER OF INTERNAL PARALLEL CIRCUITS MAY BE A MULTIPLE OF THOSE SHOWN ABOVE.
4. LEAD COLORS ARE OPTIONAL. LEADS MUST ALWAYS BE NUMBERED AS SHOWN.

CD0005

REV. DESC: REVISE TO SHOW OPTIONAL COLORS			
REV. LTR: E	BY: JLP	REVISED: 01/19/99 10:15	TDR: 0171435
S00000		FILE: AAA00005140	MDL: -
		MTL: -	

BALDOR ELECTRIC Co.

3PH, DV, 9 LEADS