

BALDOR • RELIANCE

Customer information packet

EWDM3702T

2HP, 865RPM, 3PH, 60HZ, 213T, TEFC, F1

Class - None

Division - Not Applicable

Specifications

Enclosure	TEFC
Frame	213T
Frame Material	Steel
Frequency	60.00 Hz
Haz Area Class and Group	None
Haz Area Division	Not Applicable
Motor Letter Type	Three Phase
Output @ Frequency	2.000 HP @ 60 HZ
Phase	3
Synchronous Speed @ Frequency	900 RPM @ 60 HZ
Voltage @ Frequency	230.0 V @ 60 HZ 460.0 V @ 60 HZ
Agency Approvals	CSA CSA EEV NEMA PREMIUM UR
Ambient Temperature	40 °C
Auxillary Box	No Auxillary Box
Auxillary Box Lead Termination	None
Base Indicator	Rigid
Bearing Grease Type	Polyrex EM (-20F +300F)
Blower	None
Current @ Voltage	3.500 A @ 460.0 V 7.000 A @ 230.0 V
Design Code	B
Drip Cover	No Drip Cover
Duty Rating	CONT
Efficiency @ 100% Load	85.5 %
Electrically Isolated Bearing	Not Electrically Isolated
Feedback Device	NO FEEDBACK
Heater Indicator	No Heater
High Voltage Full Load Amps	3.5 a

Part detail

Revision	C
Type	AC
Mech. spec.	
Base	
Status	PRD/A
Elec. spec.	37WGR734
Layout	37LYE572
Eff. date	02-14-2024
CD Diagram	CD0005
Poles	08
Leads	9#14
Proprietary	False
Created date	11-22-2019

Insulation Class	F
Inverter Code	Inverter Ready
KVA Code	J
Lifting Lugs	Standard Lifting Lugs
Locked Bearing Indicator	No Locked Bearing
Motor Lead Termination	Flying Leads
Motor Standards	NEMA
Motor Type	3744M
Mounting Arrangement	F1
Number of Poles	8
Overall Length	19.04 IN
Power Factor	61
Product Family	Wash Down
Pulley Face Code	Standard
Rodent Screen	None
Service Factor	1.15
Shaft Diameter	1.375 IN
Shaft Ground Indicator	No Shaft Grounding
Shaft Rotation	Reversible
Speed	865 rpm
Speed Code	Single Speed
Starting Method	Direct on line
Thermal Device - Bearing	None
Thermal Device - Winding	None
Vibration Sensor Indicator	No Vibration Sensor
Winding Thermal 1	None
Winding Thermal 2	None

Nameplate

NP1669L									
CAT.NO.	EWDM3702T								
SPEC.	37-0000-0167								
HP	2								
VOLTS	230/460								
AMP	7/3.5								
RPM	865								
FRAME	213T		HZ	60		PH	3		
SER.F.	1.15	CODE	J	DES	B	CLASS	F		
NEMA-NOM-EFF	85.5	PF	61						
RATING	40C AMB-CONT								
CC	010A								
DE	6307	ODE	6206						
ENCL	TEFC	SN							
BLANK	10:1 CT, 10:1 VT, 1.00SF								

AC Induction Motor Performance Data

Record # 78150

Typical performance - not guaranteed values

Winding: 37WGR734-R005		Type: 3744M		Enclosure: TEFC	
Nameplate Data			460 V, 60 Hz: High Voltage Connection		
Rated Output (HP)	2	Full Load Torque	12.2 LB-FT		
Volts	230/460	Start Configuration	direct on line		
Full Load Amps	7/3.5	Breakdown Torque	36.2 LB-FT		
R.P.M.	865	Pull-up Torque	20.1 LB-FT		
Hz	60 Phase	3	Locked-rotor Torque	22.2 LB-FT	
NEMA Design Code	B KVA Code	J	Starting Current	18.7 A	
Service Factor (S.F.)	1.15	No-load Current	2.25 A		
NEMA Nom. Eff.	84 Power Factor	61	Line-line Res. @ 25°C	4.59 Ω	
Rating - Duty	40C AMB-CONT	Temp. Rise @ Rated Load	33°C		
S.F. Amps		Temp. Rise @ S.F. Load	39°C		
		Locked-rotor Power Factor	32.5		
		Rotor inertia	1.09 LB-FT ²		

Load Characteristics 460 V, 60 Hz, 2 HP

% of Rated Load	25	50	75	100	125	150	S.F.
Power Factor	26	42	53	61	65	69	63
Efficiency	77.5	84.9	86.8	87.2	85.9	83.8	86.4
Speed	892	885	877	868	857	846	861
Line amperes	2.37	2.65	3.06	3.57	4.16	4.86	3.92

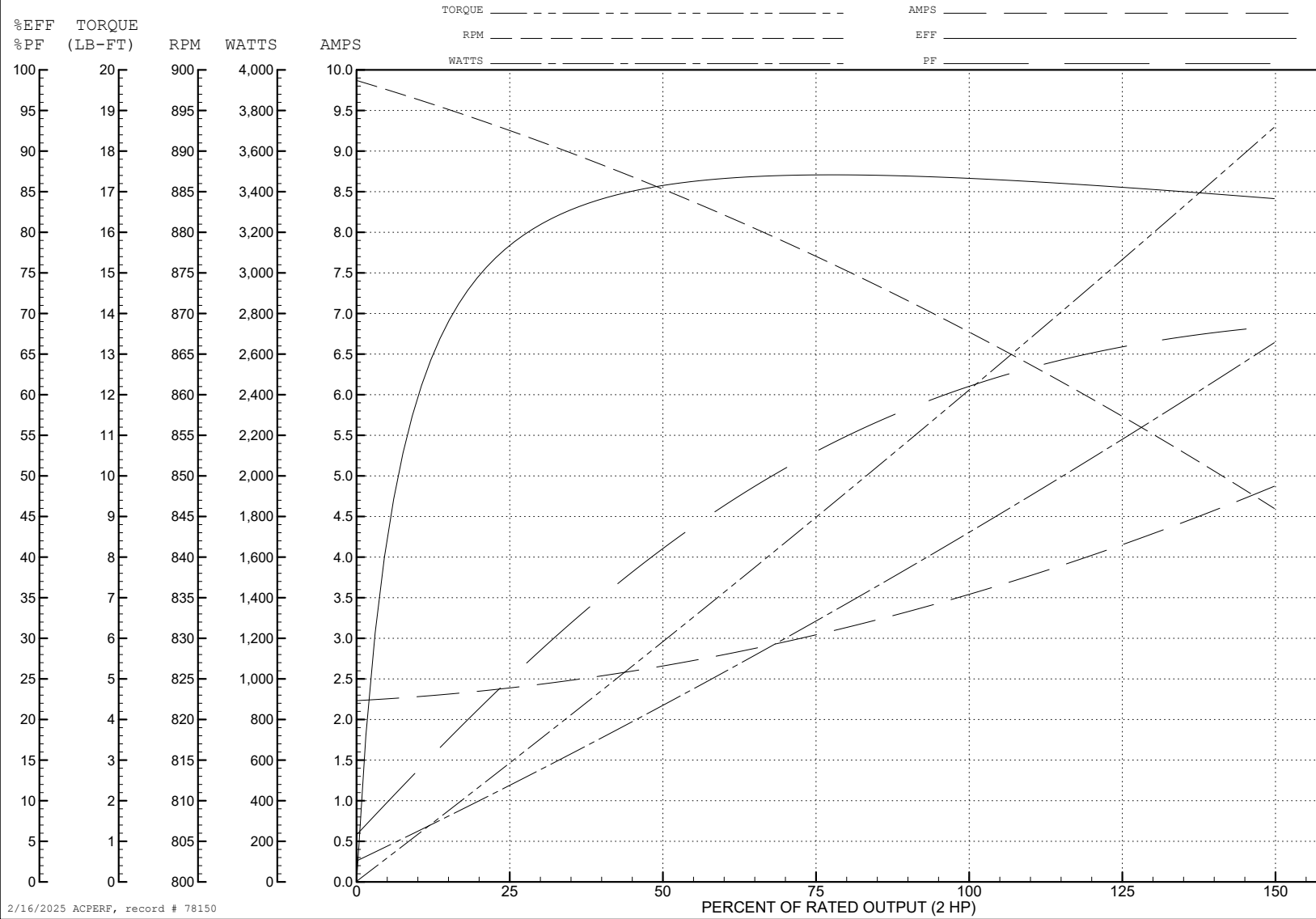
ABB Motors and Mechanical Inc.

WINDING # 37WGR734

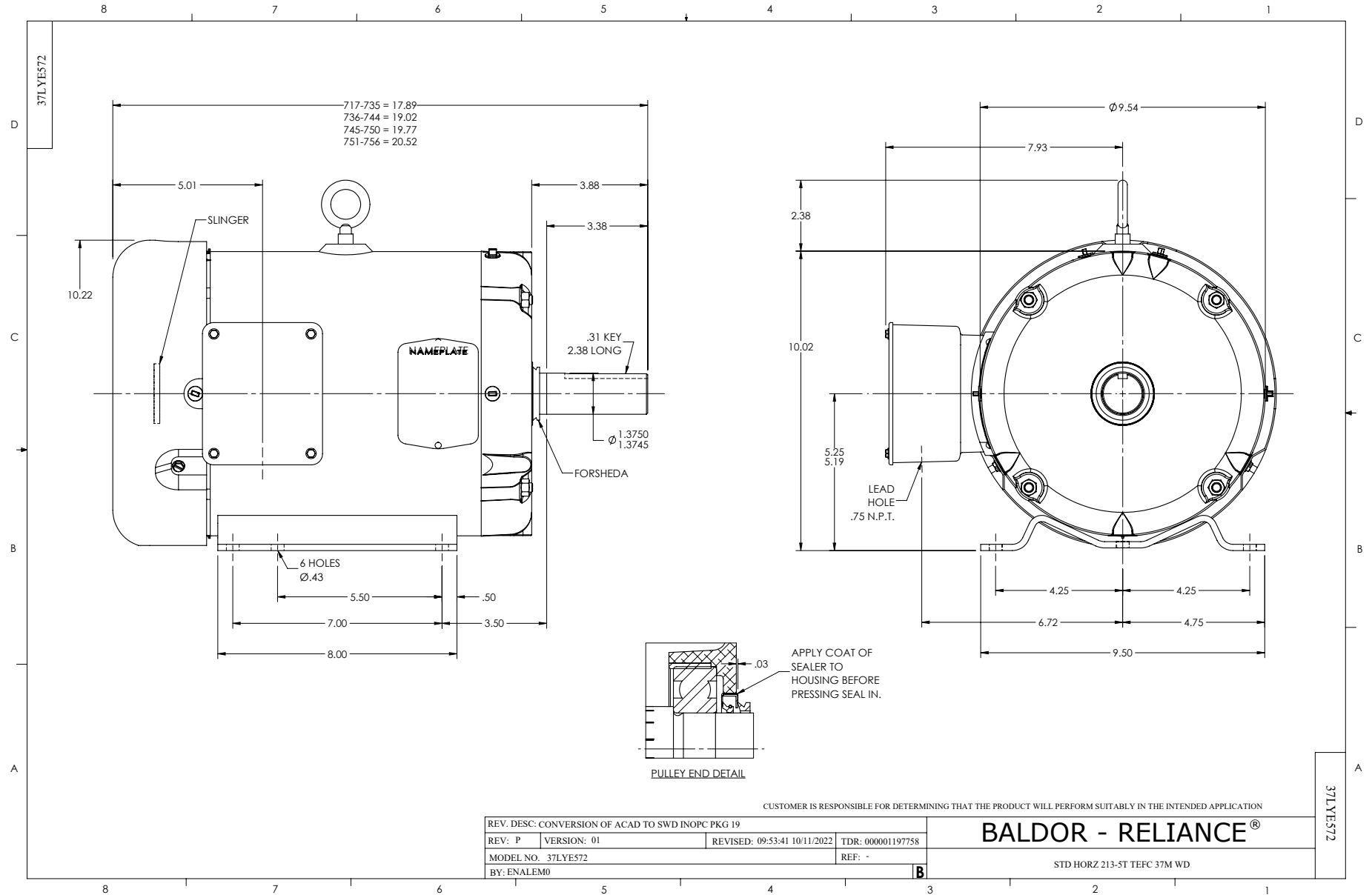
Typical performance - not guaranteed values.

2 HP 3 PH 60 HZ 865 RPM 460 V 3744M

TORQUES (LB-FT): PO=36.2 PU=20.1 LR=22.2 LRA=18.7



2/16/2025 ACPERF, record # 78150



CD0005

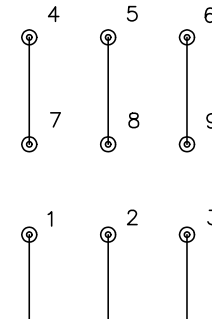


LOW VOLTAGE
(2Y)



LINE

HIGH VOLTAGE
(1Y)



LINE

NOTES:

1. INTERCHANGE ANY TWO LINE LEADS TO REVERSE ROTATION.
2. OPTIONAL THERMOSTATS ARE PROVIDED WHEN SPECIFIED.
3. ACTUAL NUMBER OF INTERNAL PARALLEL CIRCUITS MAY BE A MULTIPLE OF THOSE SHOWN ABOVE.
4. LEAD COLORS ARE OPTIONAL. LEADS MUST ALWAYS BE NUMBERED AS SHOWN.

CD0005

REV. DESC: REVISE TO SHOW OPTIONAL COLORS			
REV. LTR: E	BY: JLP	REVISED: 01/19/99 10:15	TDR: 0171435
S00000		FILE: AAA00005140	MDL: -
		MTL: -	

BALDOR ELECTRIC Co.

3PH, DV, 9 LEADS