



Customer information packet

EWDM3708T

5HP, 1165RPM, 3PH, 60HZ, 215T, TEFC, F1

Class - None

Division - Not Applicable

Specifications

Enclosure	TEFC
Frame	215T
Frame Material	Steel
Frequency	60.00 Hz
Haz Area Class and Group	None
Haz Area Division	Not Applicable
Motor Letter Type	Three Phase
Output @ Frequency	5.000 HP @ 60 HZ
Phase	3
Synchronous Speed @ Frequency	1200 RPM @ 60 HZ
Voltage @ Frequency	230.0 V @ 60 HZ 460.0 V @ 60 HZ
Agency Approvals	CSA CSA EEV NEMA PREMIUM UR
Ambient Temperature	40 °C
Auxillary Box	No Auxillary Box
Auxillary Box Lead Termination	None
Base Indicator	Rigid
Bearing Grease Type	Polyrex EM (-20F +300F)
Blower	None
Current @ Voltage	14.400 A @ 230.0 V 7.200 A @ 460.0 V
Design Code	A
Drip Cover	No Drip Cover
Duty Rating	CONT
Efficiency @ 100% Load	89.5 %
Electrically Isolated Bearing	Not Electrically Isolated
Feedback Device	NO FEEDBACK
Heater Indicator	No Heater
High Voltage Full Load Amps	7.2 a

Part detail

Revision	E
Type	AC
Mech. spec.	
Base	
Status	PRD/A
Elec. spec.	37WGQ067
Layout	37LYE572
Eff. date	02-14-2024
CD Diagram	CD0005
Poles	06
Leads	9#14
Proprietary	False
Created date	11-25-2019

Insulation Class	F
Inverter Code	Inverter Ready
KVA Code	K
Lifting Lugs	Standard Lifting Lugs
Locked Bearing Indicator	No Locked Bearing
Motor Lead Termination	Flying Leads
Motor Standards	NEMA
Motor Type	3752M
Mounting Arrangement	F1
Number of Poles	6
Overall Length	20.54 IN
Power Factor	71
Product Family	Wash Down
Pulley Face Code	Standard
Rodent Screen	None
Service Factor	1.15
Shaft Diameter	1.375 IN
Shaft Ground Indicator	No Shaft Grounding
Shaft Rotation	Reversible
Speed	1165 rpm
Speed Code	Single Speed
Starting Method	Direct on line
Thermal Device - Bearing	None
Thermal Device - Winding	None
Vibration Sensor Indicator	No Vibration Sensor
Winding Thermal 1	None
Winding Thermal 2	None

Nameplate

NP1669L									
CAT.NO.	EWDM3708T								
SPEC.	37-0000-0164								
HP	5								
VOLTS	230/460								
AMP	14.4/7.2								
RPM	1165								
FRAME	215T		HZ	60		PH	3		
SER.F.	1.15	CODE	K	DES	A	CLASS	F		
NEMA-NOM-EFF	89.5	PF	71						
RATING	40C AMB-CONT								
CC	010A								
DE	6307		ODE	6206					
ENCL	TEFC	SN							
BLANK	20:1CT, 20:1 VT, 1.00SF								

AC Induction Motor Performance Data

Record # 67641

Typical performance - not guaranteed values

Winding: 37WGQ067-R001		Type: 3752M	Enclosure: TEFC	
Nameplate Data			460 V, 60 Hz: High Voltage Connection	
Rated Output (HP)	5	Full Load Torque	22.48 LB-FT	
Volts	230/460	Start Configuration	direct on line	
Full Load Amps	14.4/7.2	Breakdown Torque	80.1 LB-FT	
R.P.M.	1165	Pull-up Torque	51.2 LB-FT	
Hz	60 Phase	Locked-rotor Torque	55.8 LB-FT	
NEMA Design Code	A KVA Code	Starting Current	54.4 A	
Service Factor (S.F.)	1.15	No-load Current	3.98 A	
NEMA Nom. Eff.	89.5 Power Factor	Line-line Res. @ 25°C	3.6757 Ω	
Rating - Duty	40C AMB-CONT	Temp. Rise @ Rated Load	59°C	
S.F. Amps		Temp. Rise @ S.F. Load	73°C	
		Locked-rotor Power Factor	21.9	

Load Characteristics 460 V, 60 Hz, 5 HP

% of Rated Load	25	50	75	100	125	150	S.F.
Power Factor	33	52	64	70	74	76	72
Efficiency	84.4	89.3	90.2	89.7	88.6	87.1	89
Speed	1191.6	1183.1	1174.9	1164.8	1154	1141.3	1158
Line amperes	4.28	5.07	6.08	7.39	8.87	10.6	8.28

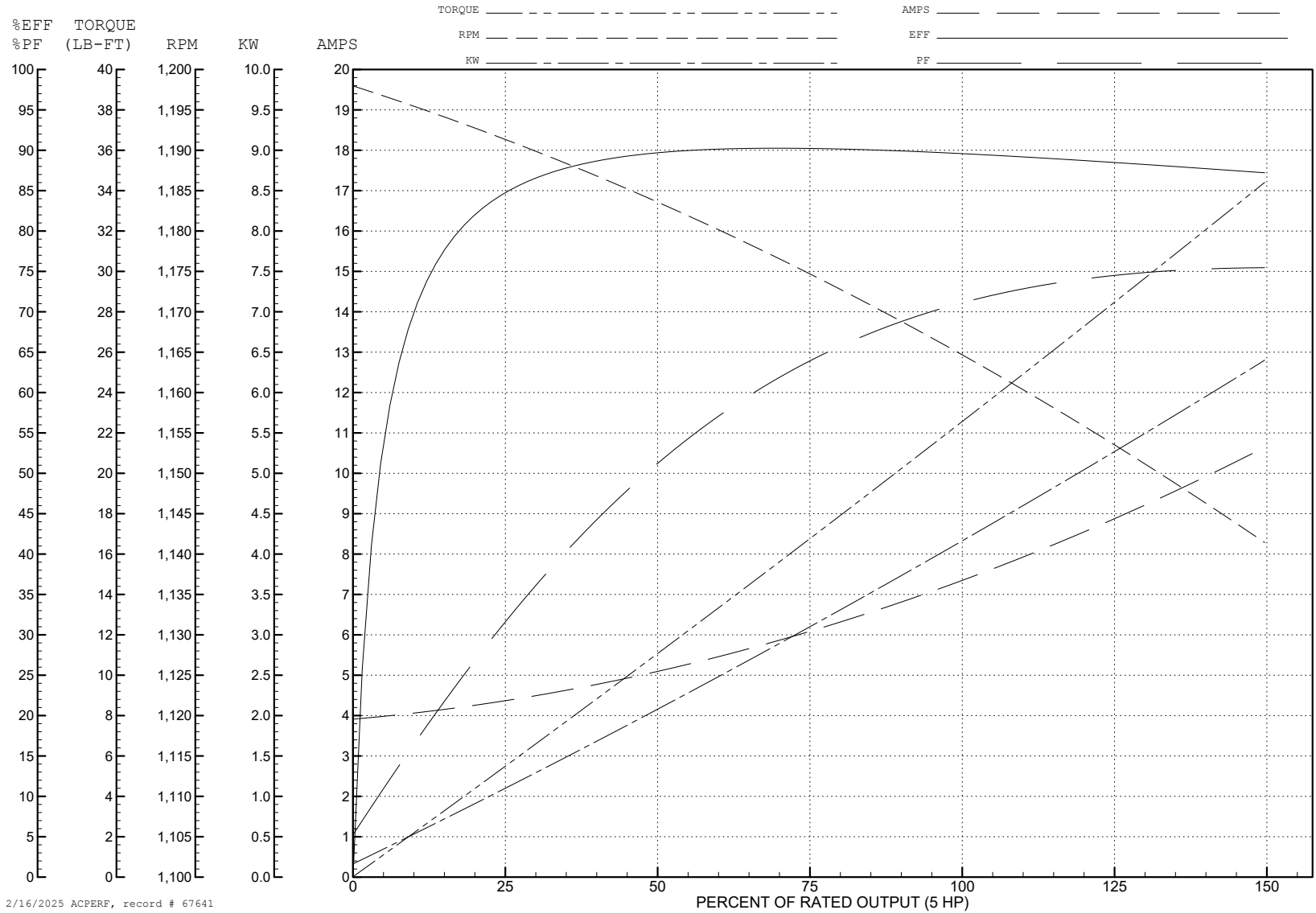
ABB Motors and Mechanical Inc.

WINDING # 37WGQ067

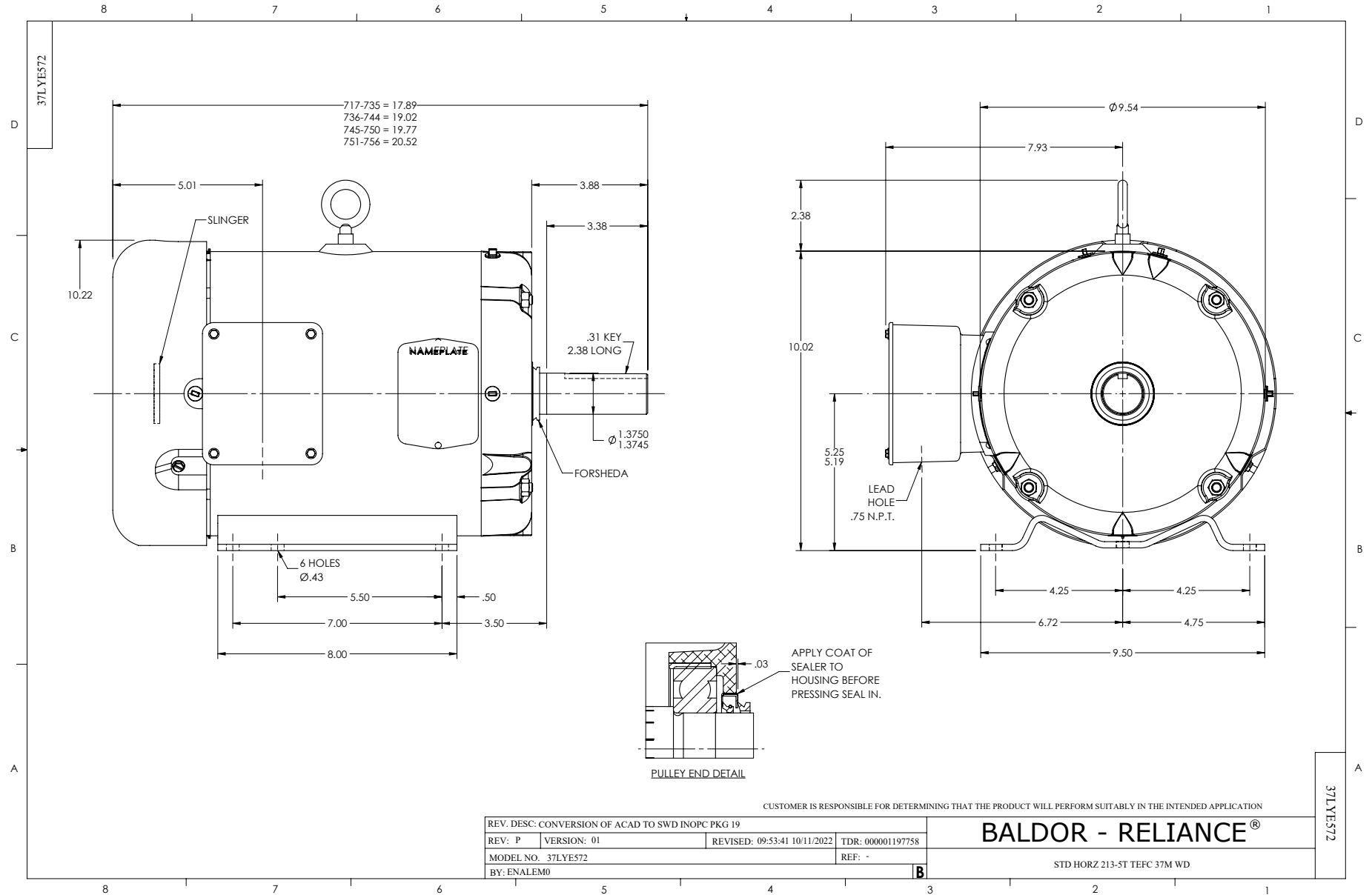
Typical performance - not guaranteed values.

5 HP 3 PH 60 HZ 1165 RPM 460 V 3752M

TORQUES (LB-FT): PO=80.1 PU=51.2 LR=55.8 LRA=54.4



2/16/2025 ACPERF, record # 67641



CD0005

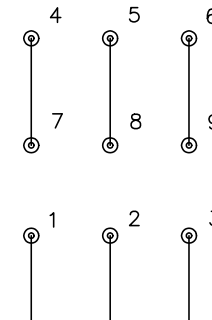


LOW VOLTAGE
(2Y)



LINE

HIGH VOLTAGE
(1Y)



LINE

NOTES:

1. INTERCHANGE ANY TWO LINE LEADS TO REVERSE ROTATION.
2. OPTIONAL THERMOSTATS ARE PROVIDED WHEN SPECIFIED.
3. ACTUAL NUMBER OF INTERNAL PARALLEL CIRCUITS MAY BE A MULTIPLE OF THOSE SHOWN ABOVE.
4. LEAD COLORS ARE OPTIONAL. LEADS MUST ALWAYS BE NUMBERED AS SHOWN.

REV. DESC: REVISE TO SHOW OPTIONAL COLORS			
REV. LTR: E	BY: JLP	REVISED: 01/19/99 10:15	TDR: 0171435
S00000		FILE: AAA00005140	MDL: -
		MTL: -	

BALDOR ELECTRIC Co.

3PH, DV, 9 LEADS

CD0005