

Electronic preset meter

3640-3, 3641-3, 3643-3, 3644-3, 3645-3, 343064-1, series 3640



Date of issue	March 2017
Form number	671000A 01727600A Rev 1
Read manual prior to installation or use of this product. Keep manual nearby for future reference	

Description

The metered control valves in the model series 3640 are designed to meter a variety of fluids. The valve assembly dispenses motor oils (SAE 5-50), gear oils (SAE 80-240), automatic transmission fluid, antifreeze (ethylene glycol), and hydraulic fluid.

Operation

Refer to 670998A User Manual (bulletin M 0411 EN_00) and 670999A Short Guide (bulletin M 0413 ML_00).

NOTE

Replace the 4 AA alkaline batteries when the bAtt signal appears on the LCD. Operating the meter until the batteries are completely depleted will cause it to be inoperable when new batteries are installed.

⚠ WARNING

Failure to follow these instructions may result in personal injury and/or property damage.

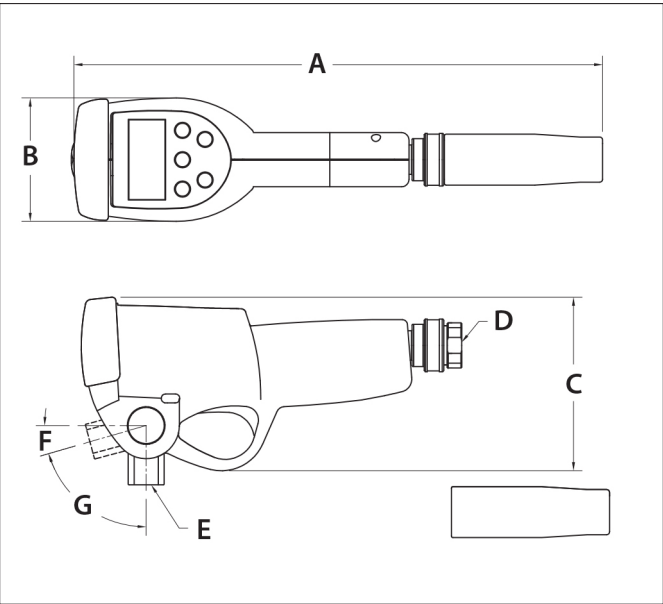


Table 2

Electronic preset meter 3640-3 series - Service parts

Part no.	Description	Qty.	Models serviced
393784-1	Locking ring	1	All models
393784-2	Filter unit	1	All models
393784-3	Battery pack	1	3640-2 series
393784-4	Half shell assembly	1	3640-2 series
393784-5	Articulated joint button	1	All models
393784-6	Battery cap	1	3640-3 series
393784-7	Half shell assembly	1	3640-3 series

Table 1

343064-1 Electronic preset meter 3640-3 series - Dimensions

Letter	Dimensions
A	13.38 in. (340 mm)
B	3.54 in. (90 mm)
C	4.53 in. (115 mm)
D	1/2 in. NPT
E	3/8 in. NPSM
F	15°
G	75°

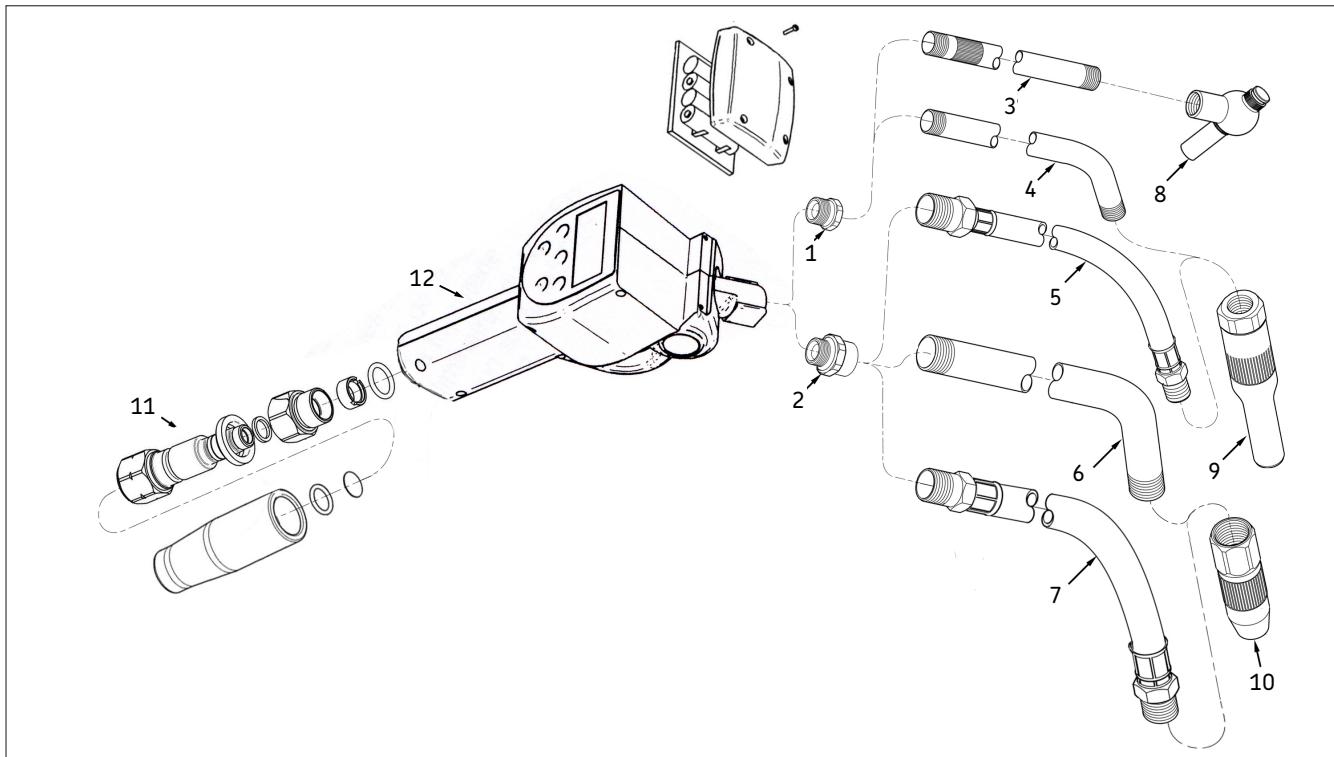


Table 3

Electronic preset meter 3640-3 series - Nozzle part numbers

Item no.	Part number	Description	Models 3640-3	3641-3	3643-3	3644-C3	3645-C3
1	40996	Bushing, 1/2 in. NPTF (m) x 1/4 in. NPTF (f)	X		X		
2	52797	Adapter, 3/8 in. NPTF (m) x 1/2 in. NPTF (f)		X		X	X
3	320421	Extension, Straight, 1/4 in. NPTF (m)			X		
4	338702	Extension, Curved, 1/4 in. NPTF (m)	X				
5	338709	Hose, 1/2 in. NPTF (m) x 1/4 in. NPTF (m)		X			
6	339149	Extension, Curved, 1/2 in. NPTF (m)				X	
7	317813-1	Hose, 1/2 in. NPTF (m) x 1/2 in. NPTF (m)					X
8	318400-3	Non-Drip Nozzle, Automatic (w/ Manual Lock)			X		
9	B339800	Non-Drip Nozzle, Automatic	X	X			
10	340084	Non-Drip Nozzle, High Volume Manual				X	X
11	393807	Swivel, 1/2 in. NPT (f) (refer to SER 393807)	X	X	X	X	X
12	343064-1	Electronic preset meter	X	X	X	X	X

EC Declaration of Conformity

The undersigned: Alemite LLC,
167 Roweland Drive, Johnson City, TN USA,
37601

Hereby states under its own responsibility,
that the equipment described below:

Description: Dispensing nozzle for oil
Model 343604-1

Serial number: Refer to Lot Number
shown on CE plate affixed to product.

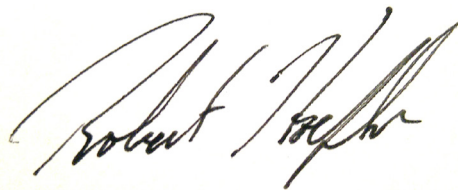
Year of manufacture: Refer to the year of
production shown on the CE plate affixed to
the product is in conformity with the legal
provisions indicated in the directive:

2014/30/EU – Electromagnetic Compati-
bility Directive.

The documentation is at the disposal of
the competent authority following motivated
request at Alemite, LLC or following request
sent to the e-mail address: alemite.tech.
support@skf.com

The person authorized to compile the
technical file and draw up the declaration is
Bob Hoefler as legal representative.

Tennessee, 37601 USA 23/05/2016

A handwritten signature in black ink, appearing to read 'Robert Hoefler', is written over a light blue rectangular background.

Robert Hoefler
Director Product Development and Product Engineering