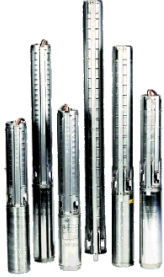


Tender Text



Product photo could vary from the actual product

Product No.: [98924281](#)

45S50-12

Multi-stage submersible pump for raw water supply, groundwater lowering and pressure boosting. The pump is suitable for pumping clean, thin, non-aggressive liquids without solid particles or fibers.

The pump is made entirely of Stainless steel DIN W.-Nr. EN 1.4301 and suitable for horizontal and vertical installation.

The pump is fitted with a built-in non-return valve.

The motor is a 1-phase motor of the canned type with a sand shield, liquid-lubricated bearings and pressure-equalizing diaphragm.

Liquid:

Pumped liquid: Water
Maximum liquid temperature: 104 °F
Liquid temperature during operation: 68 °F
Density: 62.29 lb/ft³

Technical:

Speed for pump data: 3450 rpm
Actual calculated flow: 47.3 US gpm
Resulting head of the pump: 293.7 ft
Shaft seal for motor: HM/CER
Approvals on nameplate: CE,EAC,CSA
Curve tolerance: ISO9906:2012 3B
Motor version: T40

Materials:

Pump: Stainless steel
EN 1.4301
AISI 304
Impeller: Stainless steel
EN 1.4301
AISI 304
Motor: Stainless steel
1.4301 EN
AISI 304

Installation:

Maximum ambient pressure: 870 psi
Pump outlet: 2"NPT
Motor diameter: 4 inch



Company name:

Created by:

Phone:

Date:

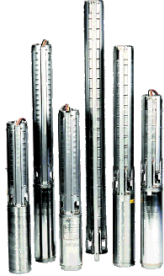
2/22/2018

Electrical data:

Motor type: MS4000
Type of motor: CSCR
Rated power - P2: 5 HP
Main frequency: 60 Hz
Rated voltage: 1 x 230 V
Service factor: 1,15
Rated current: 27.5 A
Starting current: 400 %
Cos phi - power factor: 0.92
Rated speed: 3450 rpm
Enclosure class (IEC 34-5): IP68
Insulation class (IEC 85): F
Built-in temperature transmitter: No

Others:

ErP status: EuP Standalone/Prod.
Net weight: 82.2 lb
Gross weight: 138 lb
Shipping volume: 7.06 ft³

Position	Count	Description
	1	<p>45S50-12</p>  <p style="text-align: center;">Product photo could vary from the actual product</p> <p>Product No.: 98924281 Multi-stage submersible pump for raw water supply, groundwater lowering and pressure boosting. The pump is suitable for pumping clean, thin, non-aggressive liquids without solid particles or fibers.</p> <p>The pump is made entirely of Stainless steel DIN W.-Nr. EN 1.4301 and suitable for horizontal and vertical installation. The pump is fitted with a built-in non-return valve.</p> <p>The motor is a 1-phase motor of the canned type with a sand shield, liquid-lubricated bearings and pressure-equalizing diaphragm.</p> <p>Liquid: Pumped liquid: Water Maximum liquid temperature: 104 °F Liquid temperature during operation: 68 °F Density: 62.29 lb/ft³</p> <p>Technical: Speed for pump data: 3450 rpm Actual calculated flow: 47.3 US gpm Resulting head of the pump: 293.7 ft Shaft seal for motor: HM/CER Approvals on nameplate: CE,EAC,CSA Curve tolerance: ISO9906:2012 3B Motor version: T40</p> <p>Materials: Pump: Stainless steel EN 1.4301 AISI 304 Impeller: Stainless steel EN 1.4301 AISI 304 Motor: Stainless steel 1.4301 EN AISI 304</p> <p>Installation: Maximum ambient pressure: 870 psi Pump outlet: 2"NPT Motor diameter: 4 inch</p> <p>Electrical data:</p>



Company name:

Created by:

Phone:

Date:

2/22/2018

Position	Count	Description
		Motor type: MS4000 Type of motor: CSCR Rated power - P2: 5 HP Main frequency: 60 Hz Rated voltage: 1 x 230 V Service factor: 1,15 Rated current: 27.5 A Starting current: 400 % Cos phi - power factor: 0.92 Rated speed: 3450 rpm Enclosure class (IEC 34-5): IP68 Insulation class (IEC 85): F Built-in temperature transmitter: No Others: ErP status: EuP Standalone/Prod. Net weight: 82.2 lb Gross weight: 138 lb Shipping volume: 7.06 ft ³



Company name:

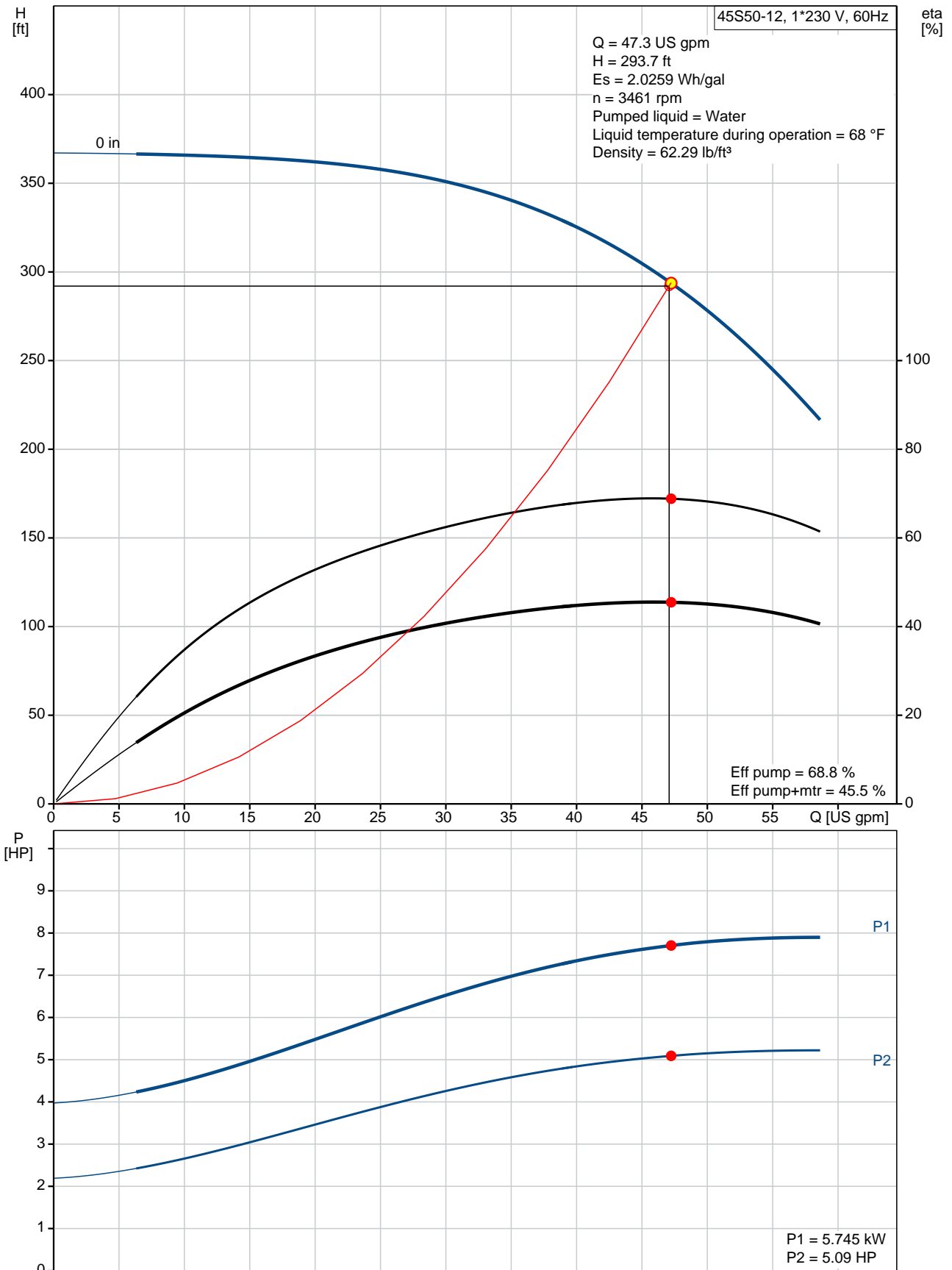
Created by:

Phone:

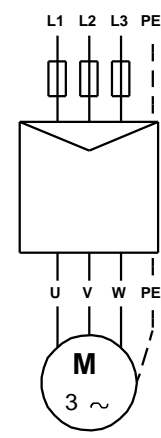
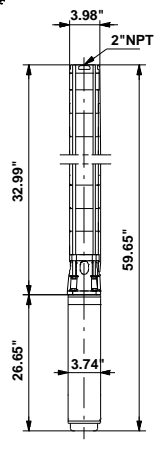
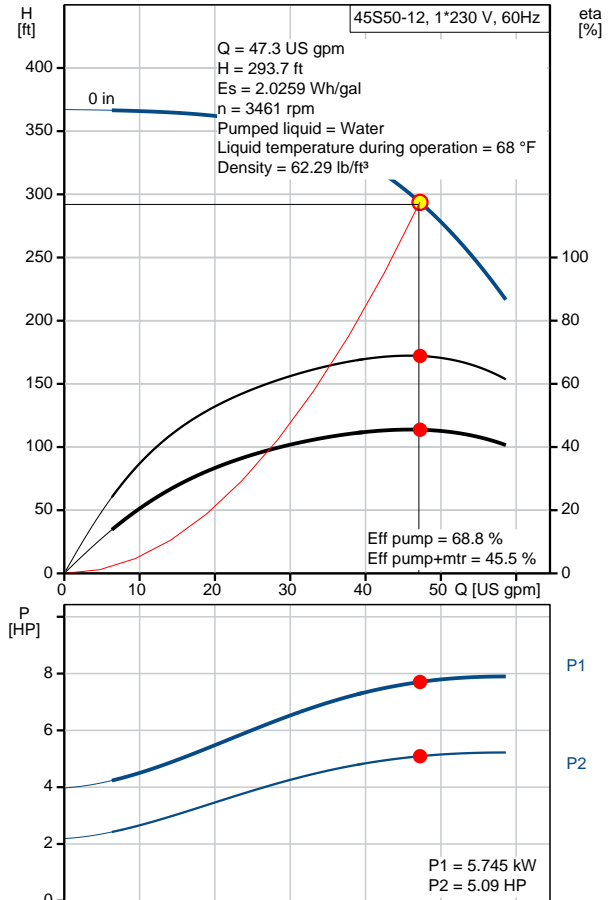
Date:

2/22/2018

98924281 45S50-12 60 Hz



Description	Value
General information:	
Product name:	45S50-12
Product No.:	98924281
EAN:	5712603660110
Technical:	
Speed for pump data:	3450 rpm
Actual calculated flow:	47.3 US gpm
Resulting head of the pump:	293.7 ft
Stages:	12
Impeller reduc.:	NONE
Shaft seal for motor:	HM/CER
Approvals on nameplate:	CE,EAC,CSA
Curve tolerance:	ISO9906:2012 3B
Model:	A
Valve:	YES
Motor version:	T40
Materials:	
Pump:	Stainless steel EN 1.4301 AISI 304
Impeller:	Stainless steel EN 1.4301 AISI 304
Motor:	Stainless steel 1.4301 EN AISI 304
Installation:	
Maximum ambient pressure:	870 psi
Pump outlet:	2"NPT
Motor diameter:	4 inch
Liquid:	
Pumped liquid:	Water
Maximum liquid temperature:	104 °F
Liquid temperature during operation:	68 °F
Density:	62.29 lb/ft ³
Electrical data:	
Motor type:	MS4000
Type of motor:	CSCR
Applic. motor:	NEMA
Rated power - P2:	5 HP
KVA code:	F
Main frequency:	60 Hz
Rated voltage:	1 x 230 V
Service factor:	1,15
Rated current:	27.5 A
Starting current:	400 %
Cos phi - power factor:	0.92
Rated speed:	3450 rpm
Axial load max:	1500 lb
Enclosure class (IEC 34-5):	IP68
Insulation class (IEC 85):	F
Motor protection:	NONE
Thermal protec:	external
Built-in temperature transmitter:	No





Company name:

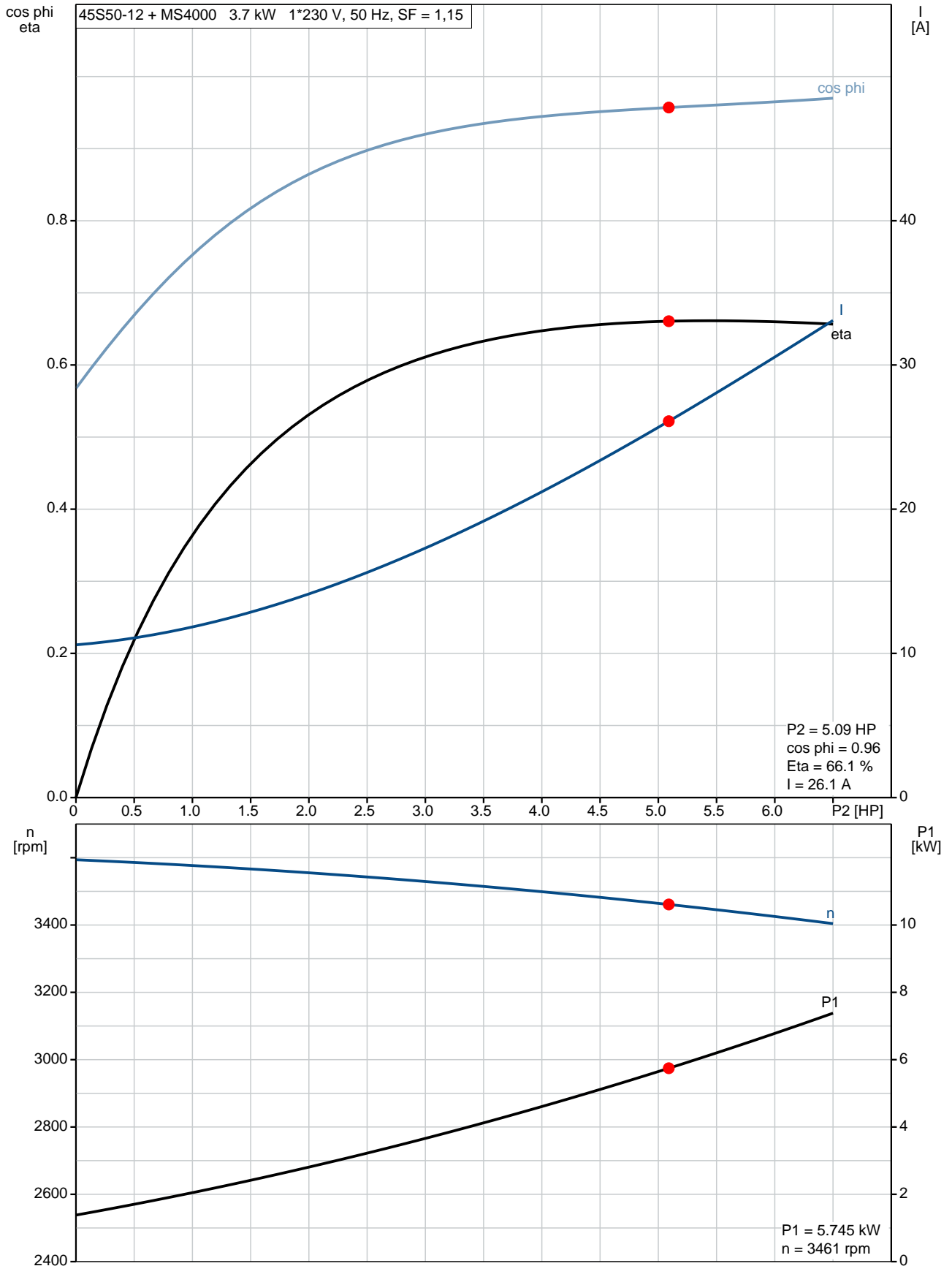
Created by:

Phone:

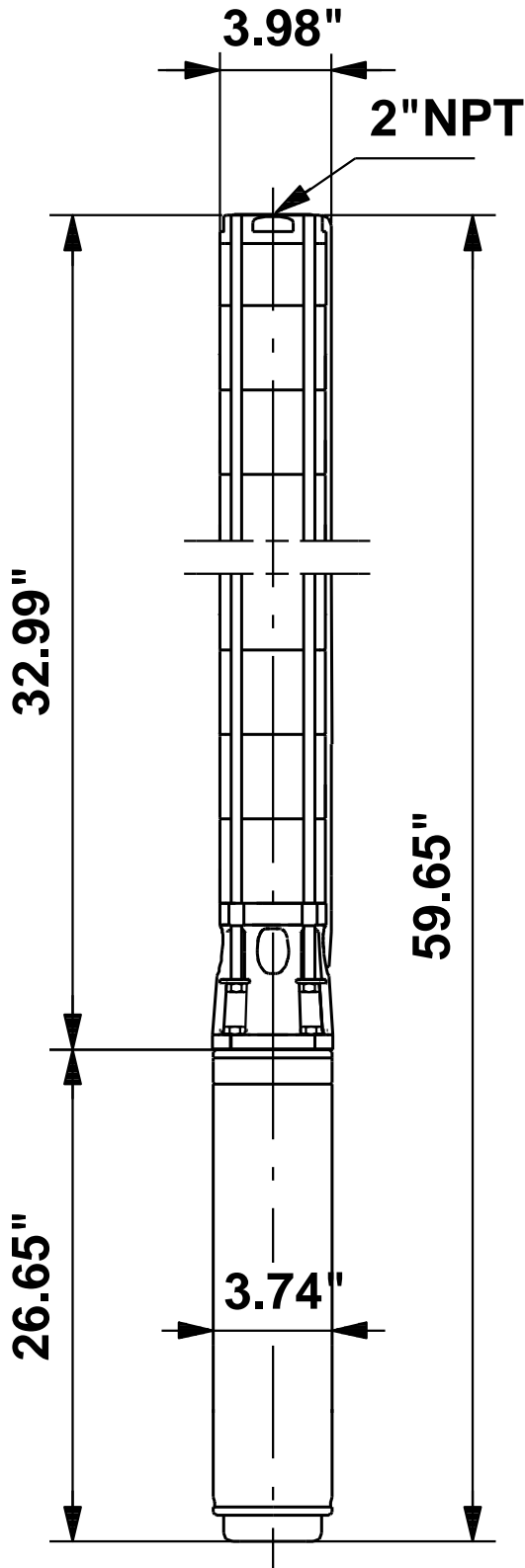
Date: 2/22/2018

Description	Value
Motor Number:	96449949
Others:	
ErP status:	EuP Standalone/Prod.
Net weight:	82.2 lb
Gross weight:	138 lb
Shipping volume:	7.06 ft ³

98924281 45S50-12 60 Hz

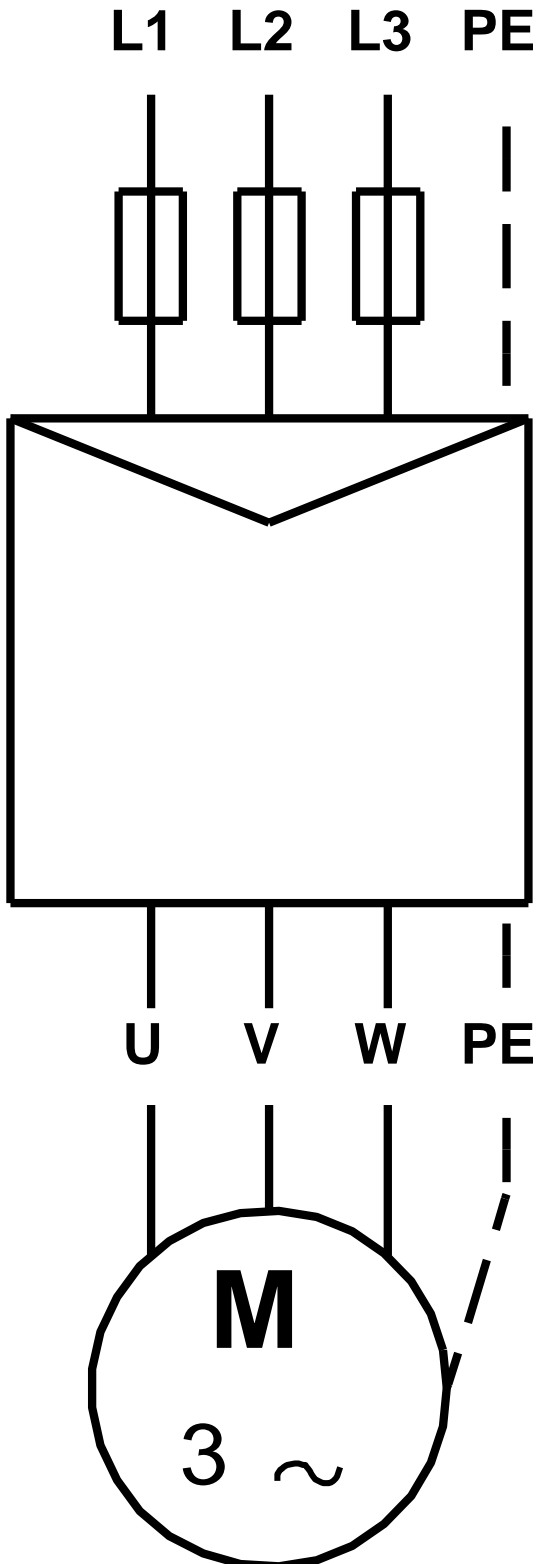


98924281 45S50-12 60 Hz



Note! All units are in [mm] unless otherwise stated.
Disclaimer: This simplified dimensional drawing does not show all details.

98924281 45S50-12 60 Hz



All units are [mm] unless otherwise presented.



Company name:

Created by:

Phone:

Date: 2/22/2018

Order Data:

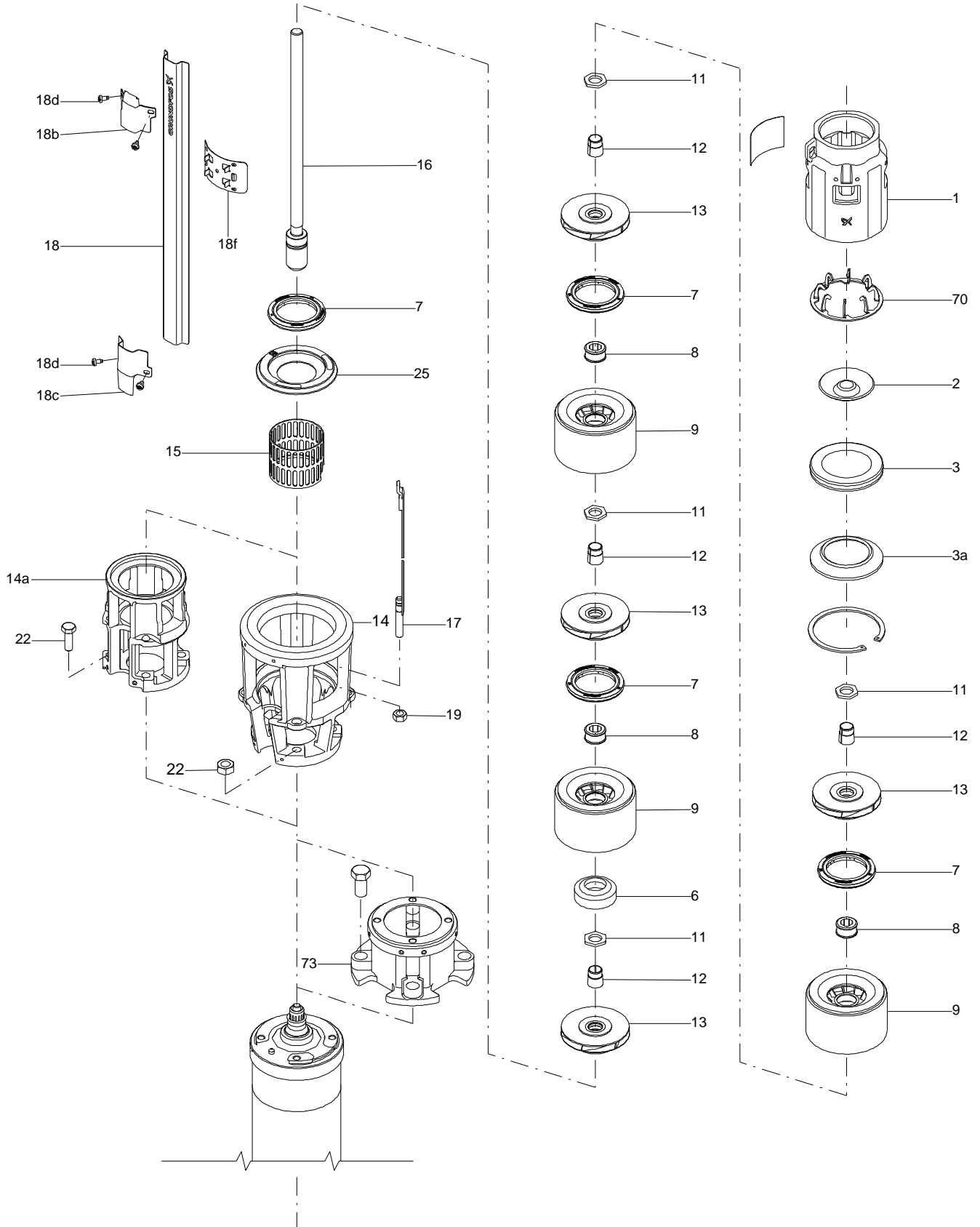
Product name: 45S50-12

Amount: 1

Product No.: 98924281

Total: Price on request

Exploded view (TM061865 for SP middle range)





Company name:

Created by:

Phone:

Date:

2/22/2018

**Parts list 45S50-12, Prod number 98924281
Valid from 19.9.2014 (1438)**

Position	Description	Annotation	Classification data	Part No.	Count	Unit
	Rubber guard				1	pcs
-	Shaft,cableg,strap				1	pcs
16	Shaft cpl.				1	
17	Strap cpl.				4	
18	Cable guard				1	
-	Stage cpl.				12	pcs
7	Seal ring				1	
8	Bearing				1	
9	Chamber cpl.				1	
11	Nut				1	
12	Split cone				1	
13	Impeller cpl.				1	
6	Uphrust bearing				1	pcs
7	Seal ring				1	pcs
14	Suction interconnector				1	pcs
15	Strainer				1	pcs
18b	Clamp				1	pcs
18c	Clamp				1	pcs
18d	Hex socket head cap screw				4	pcs
19	Nut				4	pcs
-	20 Motor				1	pcs
-	Motor				1	
1	Stator					
2	Shaft w/rotor					
2	Shaft w/rotor					
3	Thrust ring support cpl.					
4	Radial bearing					
5	Bearing pipe					
6	Thrust bearing					
7	Lock ring					
10	Bearing retainer					
11	Adjusting screw					
12	Diaphragm					
13	End shield					
15	Nut					
16	Lock washer					
18	Nut		Thread: M8			
21	Hex nut		Thread: 5/16"			
22	Staybolt					
22	Staybolt					
22b	Cheese head screw					
22c	O-ring		Diameter: 4			
			Material type: NBR			
			Thickness: 1			
24	O-ring		Diameter: 40			
			Material type: NBR			
			Thickness: 2			
25	Shaft seal housing					
27	Spline protector					
27	Spline protector					
28	Support					
29	Sand shield					
30	Compression spring					



Company name:

Created by:

Phone:

Date: 2/22/2018

Position	Description	Annotation	Classification data	Part No.	Count	Unit
31	Supporting ring					
32	Sleeve					
34	Shaft seal cpl.					
20	Motor cable				1	
25	Retainer for seal ring				1	pcs