



**The Timken Company**

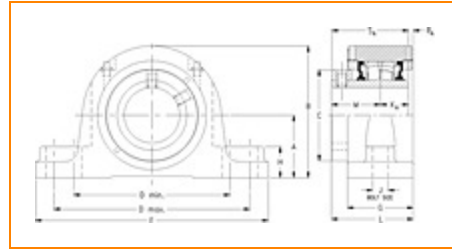
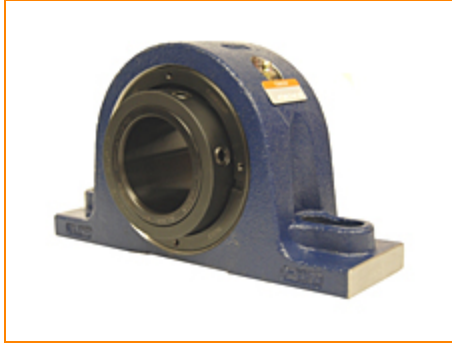
4500 Mt Pleasant St. NW

N. Canton, OH 44720

**Phone:** (234) 262-3000

**E-Mail:** [CustomerCAD@timken.com](mailto:CustomerCAD@timken.com) • **Web site:** [www.timken.com](http://www.timken.com)

## Part Number QAP20A315S, Single Concentric Two-Bolt Pillow Block



[Specifications](#) | [Dimensions](#) | [Radial and Thrust Factors](#) | [Engineering Seal Speed](#) | [Engineering Bearing Attributes](#) | [Engineering Internal Radial Clearance](#)

### Specifications

**Engineering Group** Mounted Bearing

**Bearing Number** 22220

**Shaft Size** 3 15/16 in

**Shaft Size Type** Imperial

**Full Timken Part Number**

- QAP20A315SB
- QAP20A315SC
- QAP20A315SEB
- QAP20A315SEC
- QAP20A315SEM
- QAP20A315SEN
- QAP20A315SEO
- QAP20A315SET
- QAP20A315SETSLA
- QAP20A315SETSLD
- QAP20A315SM



QAP20A315SN  
 QAP20A315SO  
 QAP20A315ST  
 QAP20A315STSLA  
 QAP20A315STSLD

**Locking Style** Single Concentric

**Housing Construction** Two-Bolt Pillow Block

**UPC Code**

0883450045605  
 0883450045612  
 0883450045636  
 0883450045643  
 0883450045650  
 0883450045667  
 0883450045674  
 0883450045681  
 0883450187961  
 0883450188128  
 0883450265461  
 0883450265621  
 0883450457408  
 0883450457415  
 0883450955508  
 0883450955515

## Dimensions

**Dimension A**

4.13 in  
 104.9 mm

**Dimension B**

8.26 in  
 209.8 mm

**Dimension C**

6 in  
 152.4 mm

**Dimension D Min**

10.04 in  
 255 mm

**Dimension D Max**

12.6 in  
 320 mm

<b>Dimension F</b>	14.25 in 362 mm
<b>Dimension G</b>	3.73 in 94.7 mm
<b>Dimension H</b>	2 in 50.8 mm
<b>Dimension J (Bolt Size)</b>	1 in 24 mm
<b>Dimension KA</b>	1.63 in 41.4 mm
<b>Dimension L</b>	4.84 in 122.9 mm
<b>Dimension M</b>	2.97 in 75.4 mm
<b>Dimension RA</b>	0.24 in 6.1 mm
<b>Dimension SA</b>	4.6 in 116.8 mm

## Radial and Thrust Factors

<b>C0 - Static Load</b>	113000 lbf 502000 N
<b>C - Dynamic Load (Basic)</b>	97700 lbf 435000 N
<b>e - Geometry Factor</b>	0.24
<b>Y1 - Geometry Factor</b>	2.85
<b>Y2 - Geometry Factor</b>	4.24

## Engineering Seal Speed

<b>Oil Lubrication - M/N Seal</b>	1200 rpm
-----------------------------------	----------

<b>Oil Lubrication - T Seal</b>	2000 rpm
---------------------------------	----------

<b>Oil Lubrication - B/C/O Seal</b>	900 rpm
-------------------------------------	---------

<b>Grease Lubrication - M/N Seal</b>	1200 rpm
--------------------------------------	----------

<b>Grease Lubrication - T Seal</b>	1600 rpm
------------------------------------	----------

<b>Grease Lubrication - B/C/O Seal</b>	900 rpm
--	---------

## Engineering Bearing Attributes

<b>Float</b>	0.083 in 2.108 mm
--------------	----------------------

<b>Shaft Tolerance</b>	0.0030 in 0.076 mm
------------------------	-----------------------

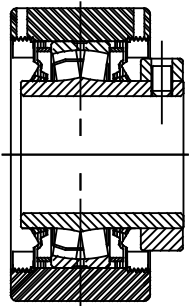
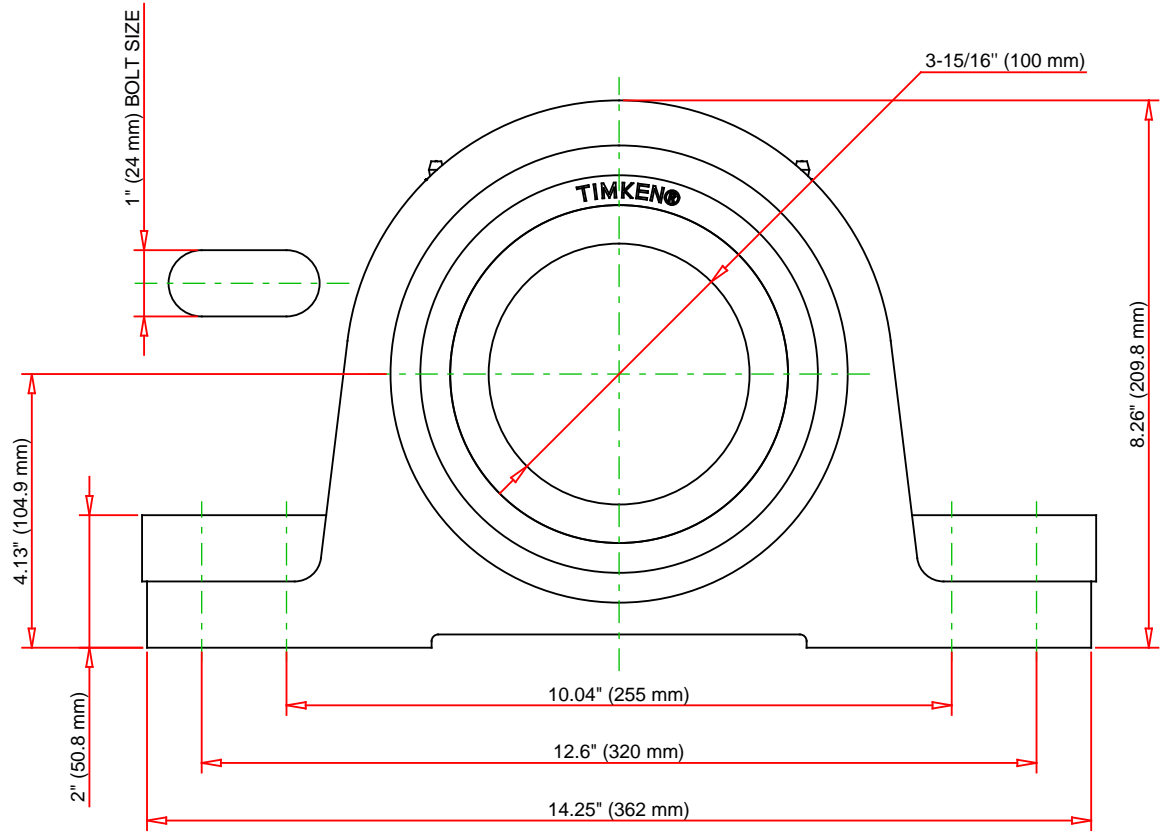
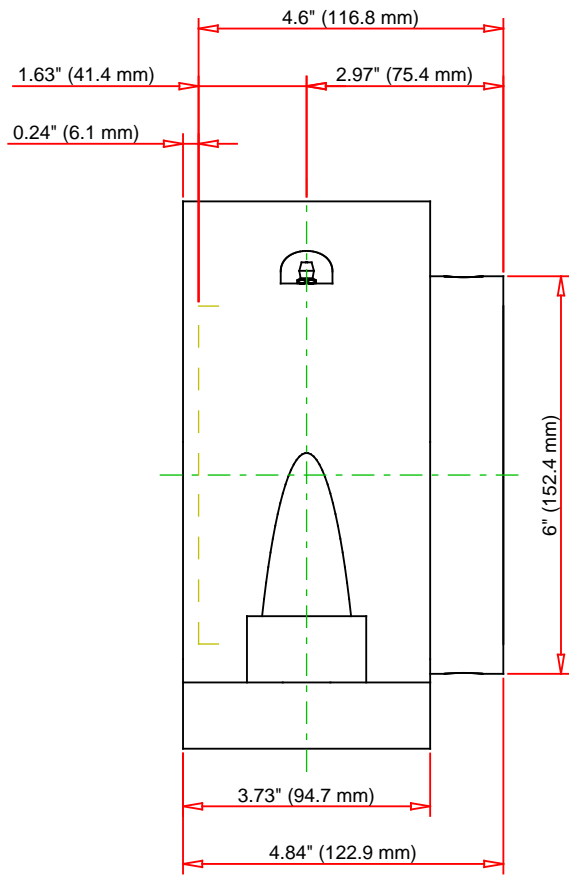
## Engineering Internal Radial Clearance

<b>Eng Internal Radial Clearance - Min</b>	0.0030
--	--------

<b>Eng Internal Radial Clearance - Max</b>	0.0047
--	--------

<b>Pre Install Clearance Min</b>	0.0030 in 0.075 mm
----------------------------------	-----------------------

<b>Pre Install Clearance Max</b>	0.0047 in 0.120 mm
----------------------------------	-----------------------



Note: Section View not to Scale

C - Dynamic Load	97700	lbf	435000	N
C0 - Static Load	113000	lbf	502000	N
Weight	59	lb	26.8	kg
Max. Speed T-Seals & Grease	1600	rpm		
Rad. Clearance - Max.	0.0047			

**TIMKEN**

THE TIMKEN COMPANY  
NORTH CANTON, OHIO USA

**QAP20A315S**

Single Concentric Two-Bolt Pillow Block

Every reasonable effort has been made to ensure the accuracy of the information contained in this writing, but no liability is accepted for errors, omissions or for any other reason.

**FOR DISCUSSION ONLY**