



**The Timken Company**

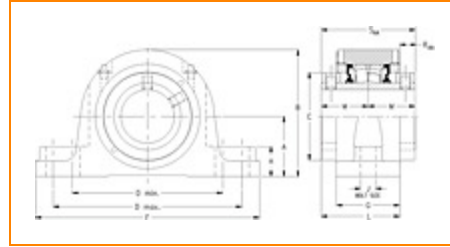
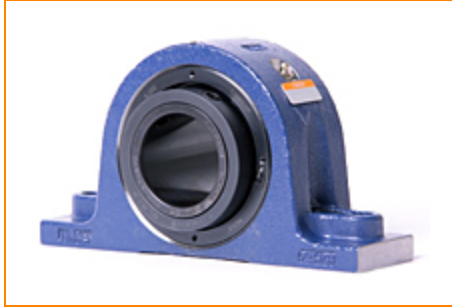
4500 Mt Pleasant St. NW

N. Canton, OH 44720

**Phone:** (234) 262-3000

**E-Mail:** [CustomerCAD@timken.com](mailto:CustomerCAD@timken.com) • **Web site:** [www.timken.com](http://www.timken.com)

## Part Number QAAP13A208S, Double Concentric Two-Bolt Pillow Block



[Specifications](#) | [Dimensions](#) | [Radial and Thrust Factors](#) | [Engineering Seal Speed](#) | [Engineering Bearing Attributes](#) | [Engineering Internal Radial Clearance](#)

### Specifications

**Engineering Group** Mounted Bearing

**Bearing Number** 22213

**Shaft Size** 2 1/2 in

**Shaft Size Type** Imperial

**Full Timken Part Number**

- QAAP13A208SB
- QAAP13A208SC
- QAAP13A208SEB
- QAAP13A208SEC
- QAAP13A208SEM
- QAAP13A208SEN
- QAAP13A208SENG
- QAAP13A208SEO
- QAAP13A208SET
- QAAP13A208SM
- QAAP13A208SN
- QAAP13A208SNNG
- QAAP13A208SO
- QAAP13A208ST



<b>Locking Style</b>	Double Concentric
----------------------	-------------------

<b>Housing Construction</b>	Two-Bolt Pillow Block
-----------------------------	-----------------------

<b>UPC Code</b>	0883450025904
	0883450025911
	0883450025935
	0883450025942
	0883450025959
	0883450025966
	0883450025973
	0883450025980
	0883450188203
	0883450188364
	0883450265706
	0883450265867
0883450956024	
0883450956031	

## Dimensions

<b>Dimension A</b>	2.75 in 69.9 mm
--------------------	--------------------

<b>Dimension B</b>	5.8 in 147.3 mm
--------------------	--------------------

<b>Dimension C</b>	3.81 in 96.8 mm
--------------------	--------------------

<b>Dimension D Min</b>	6.88 in 174.8 mm
------------------------	---------------------

<b>Dimension D Max</b>	8.63 in 219.2 mm
------------------------	---------------------

<b>Dimension F</b>	10 1/4 in 260.4 mm
--------------------	-----------------------

<b>Dimension G</b>	2.9 in 73.7 mm
--------------------	-------------------

<b>Dimension H</b>	1.38 in 35.1 mm
--------------------	--------------------

<b>Dimension J (Bolt Size)</b>	0.625 in 16 mm
<b>Dimension L</b>	3.6 in 91.4 mm
<b>Dimension M</b>	2.15 in 54.6 mm
<b>Dimension RAA</b>	0.7 in 17.8 mm
<b>Dimension SAA</b>	4.3 in 109.2 mm

### Radial and Thrust Factors

<b>C0 - Static Load</b>	48600 lbf 216000 N
<b>C - Dynamic Load (Basic)</b>	46400 lbf 206000 N
<b>e - Geometry Factor</b>	0.24
<b>Y1 - Geometry Factor</b>	2.79
<b>Y2 - Geometry Factor</b>	4.15

### Engineering Seal Speed

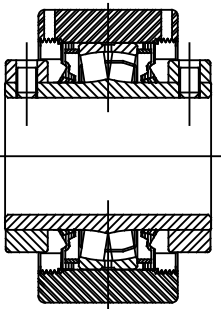
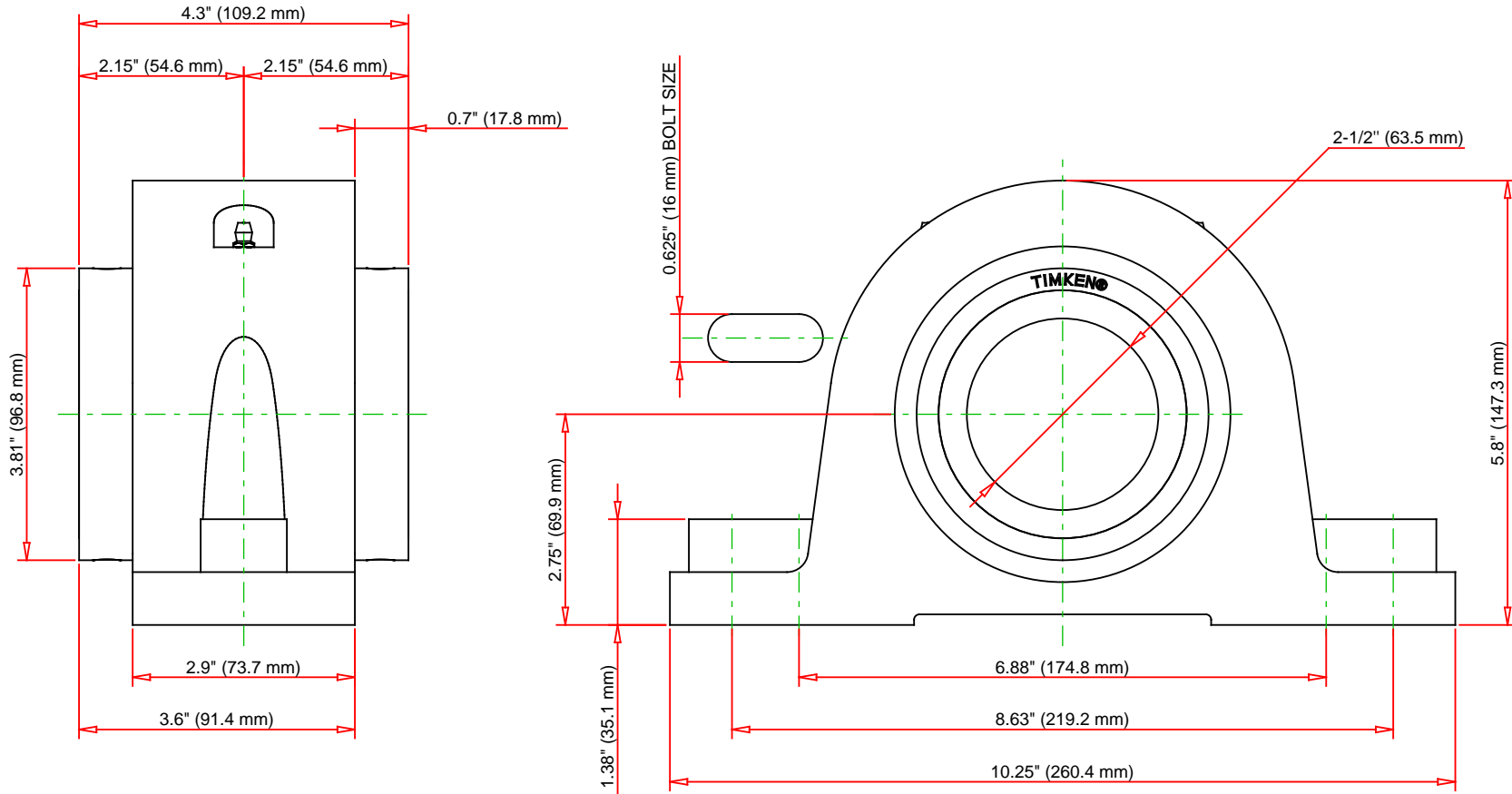
<b>Oil Lubrication - M/N Seal</b>	1800 rpm
<b>Oil Lubrication - T Seal</b>	3200 rpm
<b>Oil Lubrication - B/C/O Seal</b>	1500 rpm
<b>Grease Lubrication - M/N Seal</b>	1800 rpm
<b>Grease Lubrication - T Seal</b>	2800 rpm
<b>Grease Lubrication - B/C/O Seal</b>	1500 rpm

## Engineering Bearing Attributes

<b>Float</b>	0.083 in 2.108 mm
<b>Shaft Tolerance</b>	0.0015 in 0.038 mm

## Engineering Internal Radial Clearance

<b>Eng Internal Radial Clearance - Min</b>	0.0016
<b>Eng Internal Radial Clearance - Max</b>	0.0026
<b>Pre Install Clearance Min</b>	0.0016 in 0.040 mm
<b>Pre Install Clearance Max</b>	0.0026 in 0.065 mm



Note: Section View not to Scale

C - Dynamic Load	46400	lbf	206000	N
C0 - Static Load	48600	lbf	216000	N
Weight	22	lb	10	kg
Max. Speed T-Seals & Grease	2800	rpm		
Rad. Clearance - Max.	0.0026			

**TIMKEN**

THE TIMKEN COMPANY  
NORTH CANTON, OHIO USA

**QAAP13A208S**

Double Concentric Two-Bolt Pillow  
Block

Every reasonable effort has been made to ensure the accuracy of the information contained in this writing, but no liability is accepted for errors, omissions or for any other reason.

**FOR DISCUSSION ONLY**