



The Timken Company

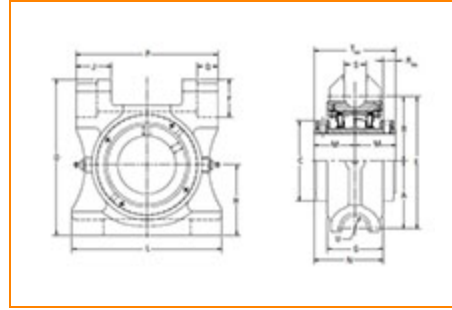
4500 Mt Pleasant St. NW

N. Canton, OH 44720

Phone: (234) 262-3000

E-Mail: CustomerCAD@timken.com • **Web site:** www.timken.com

Part Number QAATP11A203S, Double Concentric Top Pull Take-Up Block



[Specifications](#) | [Dimensions](#) | [Radial and Thrust Factors](#) | [Engineering Seal Speed](#) | [Engineering Bearing Attributes](#) | [Engineering Internal Radial Clearance](#)

Specifications

Engineering Group Mounted Bearing

Bearing Number 22211

Shaft Size 2 3/16 in

Shaft Size Type Imperial

Full Timken Part Number

- QAATP11A203SB
- QAATP11A203SC
- QAATP11A203SEB
- QAATP11A203SEC
- QAATP11A203SEM
- QAATP11A203SEN
- QAATP11A203SEO
- QAATP11A203SET
- QAATP11A203SM
- QAATP11A203SN
- QAATP11A203SO



QAATP11A203ST

Locking Style Double Concentric**Housing Construction** Top Pull Take-Up**Dimensions****Dimension A1** 3.25 in
82.6 mm**Dimension B** 2.87 in
72.8 mm**Dimension C** 3.25 in
82.6 mm**Dimension D** 7.63 in
193.8 mm**Dimension E** 6-1/4 in
158.8 mm**Dimension F** 1.94 in
49.3 mm**Dimension G** 2.75 in
69.9 mm**Dimension H** 3.5 in
88.9 mm**Dimension J** 1.75 in
44.4 mm**Dimension L** 7.5 in
190.6 mm**Dimension M** 2 in
50.8 mm**Dimension N** 3.49 in
88.5 mm

Dimension P	7 in 177.8 mm
Dimension Q	1.06 in 26.9 mm
Dimension RAA	0.51 in 13.1 mm
Dimension S	1.12 in 28.4 mm
Dimension TAA	4 in 101.6 mm
Dimension U	0.81 in 20.6 mm

Radial and Thrust Factors

C0 - Static Load	31900 lbf 142000 N
C - Dynamic Load (Basic)	31400 lbf 140000 N
e - Geometry Factor	0.23
Y1 - Geometry Factor	2.95
Y2 - Geometry Factor	4.40

Engineering Seal Speed

Oil Lubrication - M/N Seal	2200 rpm
Oil Lubrication - T Seal	3800 rpm
Oil Lubrication - B/C/O Seal	1600 rpm
Grease Lubrication - M/N Seal	2200 rpm

Grease Lubrication - T Seal	3200 rpm
------------------------------------	----------

Grease Lubrication - B/C/O Seal	1600 rpm
--	----------

Engineering Bearing Attributes

Float	0.050 in 1.270 mm
--------------	----------------------

Shaft Tolerance	0.0015 in 0.038 mm
------------------------	-----------------------

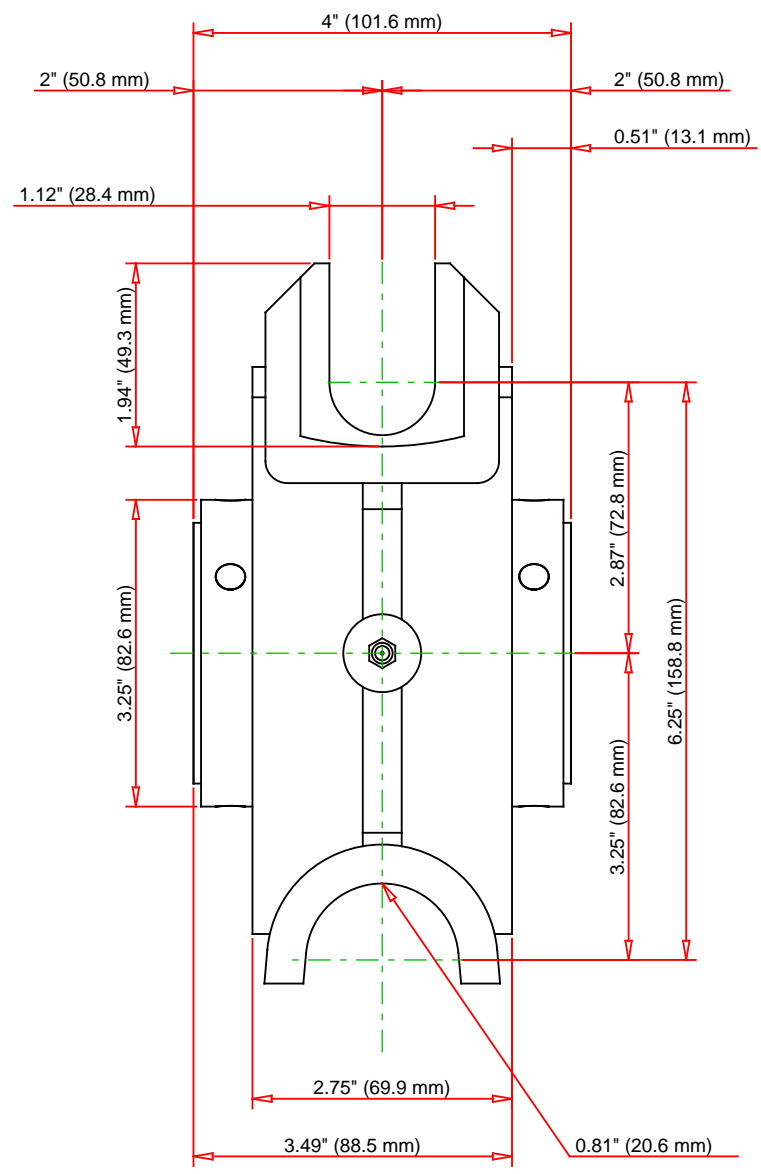
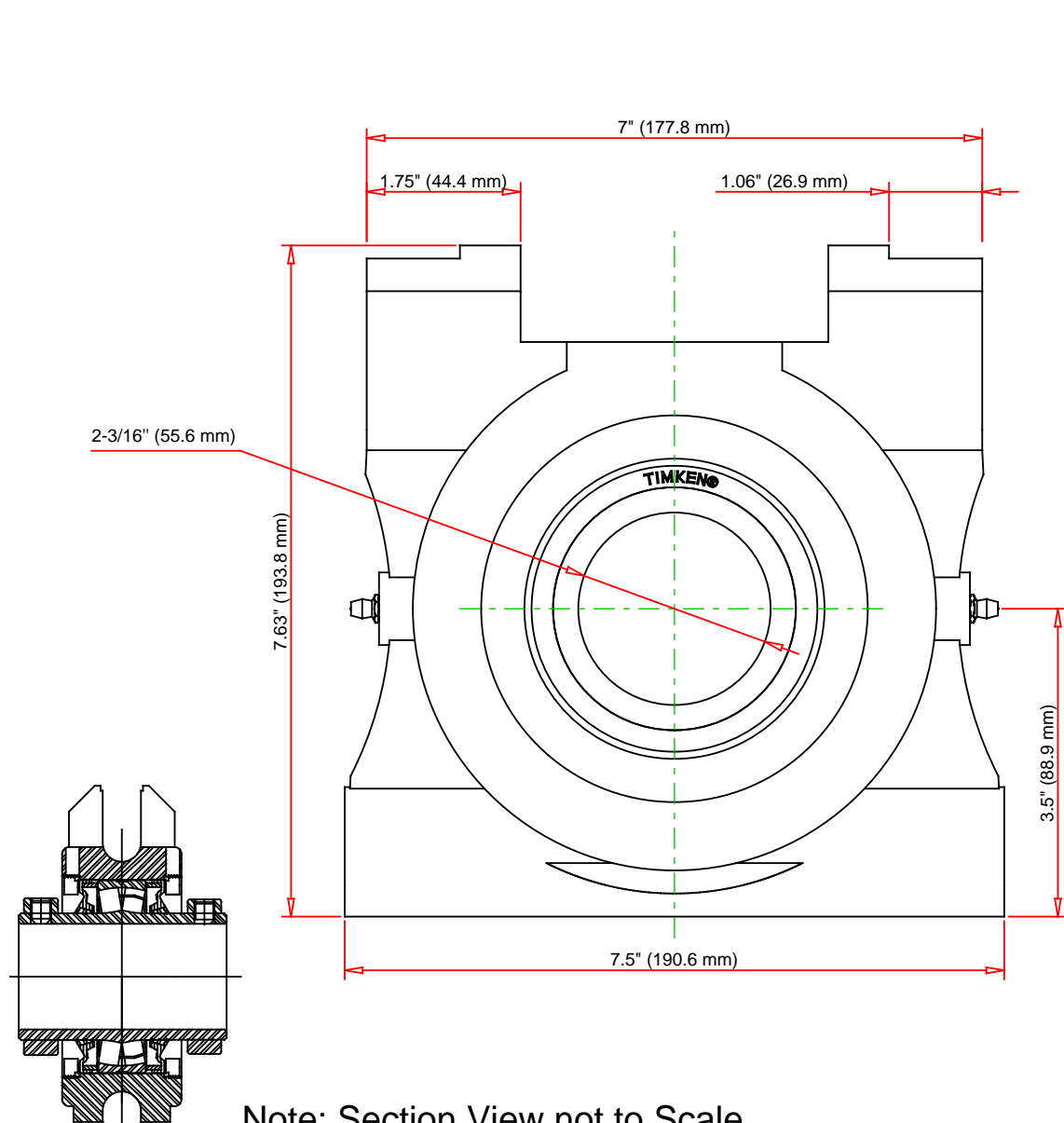
Engineering Internal Radial Clearance

Eng Internal Radial Clearance - Min	0.0016
--	--------

Eng Internal Radial Clearance - Max	0.0026
--	--------

Pre Install Clearance Min	0.0016 in 0.040 mm
----------------------------------	-----------------------

Pre Install Clearance Max	0.0026 in 0.065 mm
----------------------------------	-----------------------



Note: Section View not to Scale

C - Dynamic Load	31400	lbf	140000	N
C0 - Static Load	31900	lbf	142000	N
Weight		lb		kg
Max. Speed T-Seals & Grease	3200	rpm		
Rad. Clearance - Max.	0.0026			

TIMKEN

THE TIMKEN COMPANY
NORTH CANTON, OHIO USA

QAATP11A203S

Double Concentric Top Pull Take-Up
Block

Every reasonable effort has been made to ensure the accuracy of the information contained in this writing, but no liability is accepted for errors, omissions or for any other reason.

FOR DISCUSSION ONLY