



The Timken Company

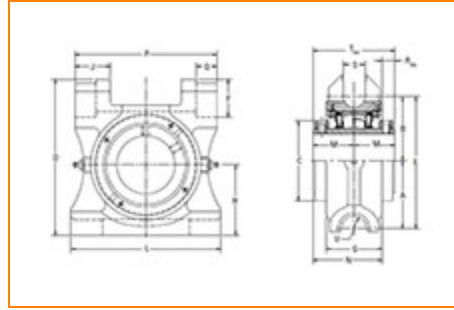
4500 Mt Pleasant St. NW

N. Canton, OH 44720

Phone: (234) 262-3000

E-Mail: CustomerCAD@timken.com • **Web site:** www.timken.com

Part Number QAATP15A300S, Double Concentric Top Pull Take-Up Block



[Specifications](#) | [Dimensions](#) | [Radial and Thrust Factors](#) | [Engineering Seal Speed](#) | [Engineering Bearing Attributes](#) | [Engineering Internal Radial Clearance](#)

Specifications -

Engineering Group	Mounted Bearing
Bearing Number	22215
Shaft Size	3 in
Shaft Size Type	Imperial
Full Timken Part Number	QAATP15A300SB QAATP15A300SC QAATP15A300SEB QAATP15A300SEC QAATP15A300SEM QAATP15A300SEN QAATP15A300SEO QAATP15A300SET QAATP15A300SM QAATP15A300SMSLA QAATP15A300SMSLD



QAATP15A300SN
 QAATP15A300SO
 QAATP15A300ST

Locking Style Double Concentric

Housing Construction Top Pull Take-Up

Dimensions

Dimension A1 3.82 in
97 mm

Dimension B 3.31 in
84.1 mm

Dimension C 4.29 in
108.9 mm

Dimension D 8-1/2 in
215.9 mm

Dimension E 7.13 in
181.1 mm

Dimension F 1.94 in
49.3 mm

Dimension G 3.19 in
81 mm

Dimension H 3.99 in
101.4 mm

Dimension J 1.75 in
44.4 mm

Dimension L 8-1/2 in
215.9 mm

Dimension M 2.37 in
60.2 mm

Dimension N	3.96 in 100.7 mm
--------------------	---------------------

Dimension P	8 in 203.2 mm
--------------------	------------------

Dimension Q	1.06 in 26.9 mm
--------------------	--------------------

Dimension RAA	0.78 in 19.7 mm
----------------------	--------------------

Dimension S	1.12 in 28.4 mm
--------------------	--------------------

Dimension TAA	4.74 in 120.4 mm
----------------------	---------------------

Dimension U	0.81 in 20.6 mm
--------------------	--------------------

Radial and Thrust Factors

C0 - Static Load	54100 lbf 240000 N
-------------------------	-----------------------

C - Dynamic Load (Basic)	49900 lbf 222000 N
---------------------------------	-----------------------

e - Geometry Factor	0.22
----------------------------	------

Y1 - Geometry Factor	3.14
-----------------------------	------

Y2 - Geometry Factor	4.67
-----------------------------	------

Engineering Seal Speed

Oil Lubrication - M/N Seal	1600 rpm
-----------------------------------	----------

Oil Lubrication - T Seal	2900 rpm
---------------------------------	----------

Oil Lubrication - B/C/O Seal	1300 rpm
-------------------------------------	----------

Grease Lubrication - M/N Seal	1600 rpm
--------------------------------------	----------

Grease Lubrication - T Seal	2400 rpm
------------------------------------	----------

Grease Lubrication - B/C/O Seal	1300 rpm
--	----------

Engineering Bearing Attributes

Float	0.08 in 2.03 mm
--------------	--------------------

Shaft Tolerance	0.0020 in 0.051 mm
------------------------	-----------------------

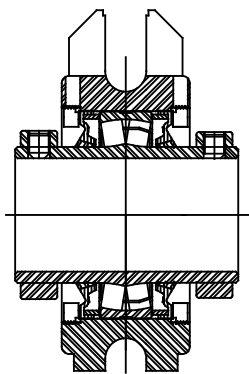
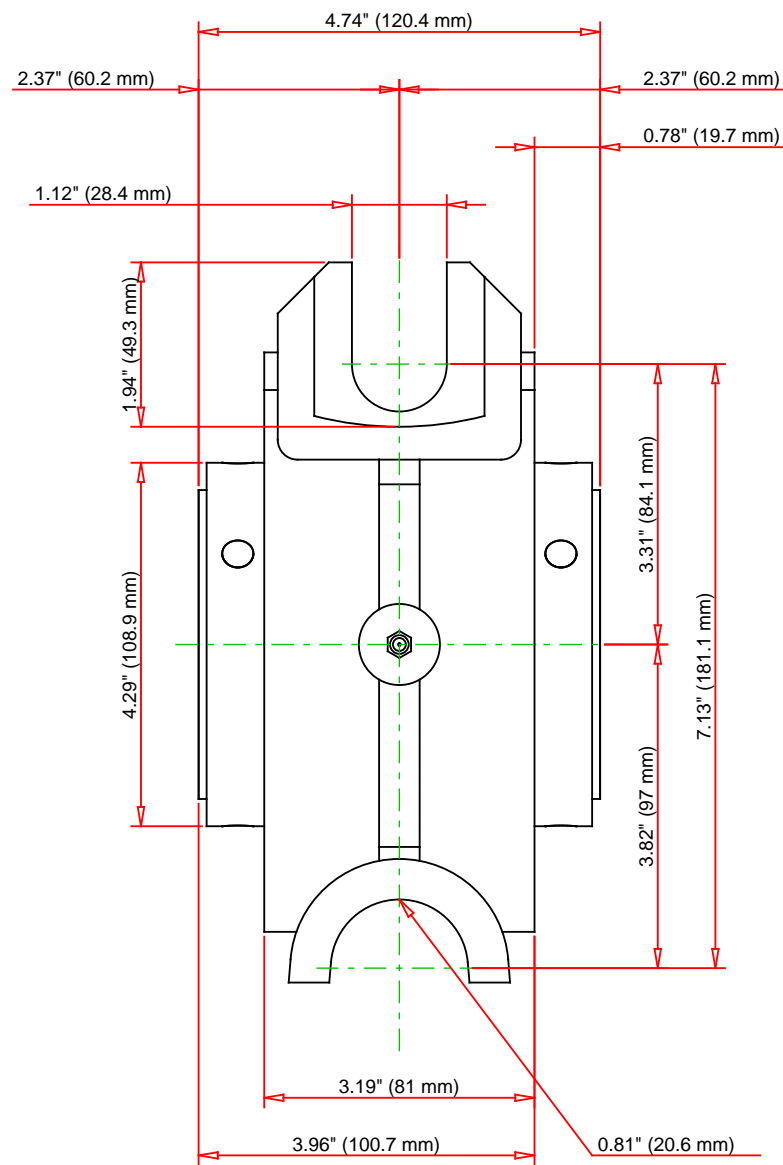
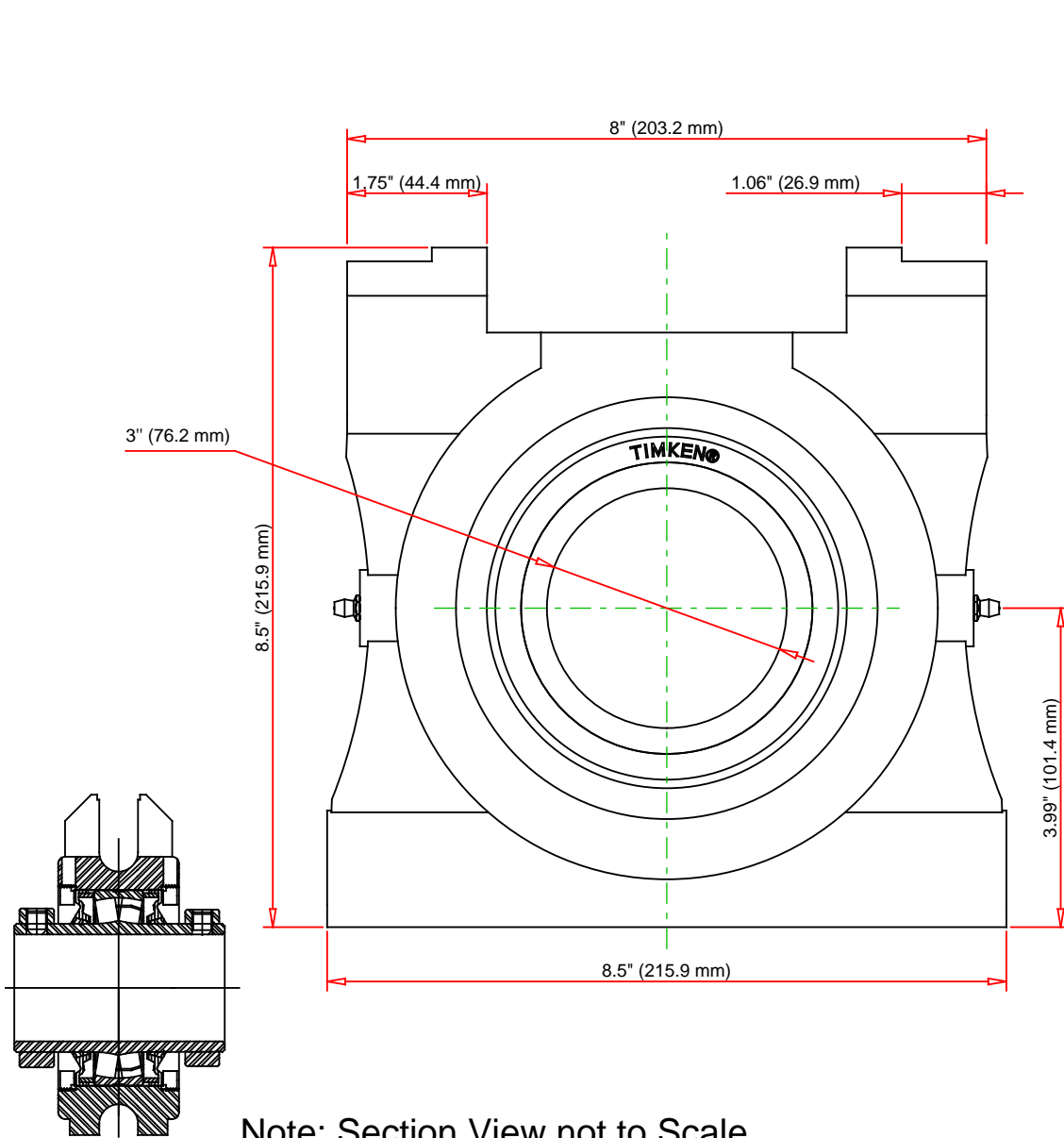
Engineering Internal Radial Clearance

Eng Internal Radial Clearance - Min	0.0020
--	--------

Eng Internal Radial Clearance - Max	0.0031
--	--------

Pre Install Clearance Min	0.0020 in 0.050 mm
----------------------------------	-----------------------

Pre Install Clearance Max	0.0031 in 0.080 mm
----------------------------------	-----------------------



Note: Section View not to Scale

C - Dynamic Load	49900	lbf	222000	N
C0 - Static Load	54100	lbf	240000	N
Weight		lb		kg
Max. Speed T-Seals & Grease	2400	rpm		
Rad. Clearance - Max.	0.0031			

TIMKEN

THE TIMKEN COMPANY
NORTH CANTON, OHIO USA

QAATP15A300S

Double Concentric Top Pull Take-Up
Block

Every reasonable effort has been made to ensure the accuracy of the information contained in this writing, but no liability is accepted for errors, omissions or for any other reason.

FOR DISCUSSION ONLY