


The Timken Company

4500 Mt Pleasant St. NW

N. Canton, OH 44720

Phone: (234) 262-3000

E-Mail: CustomerCAD@timken.com • **Web site:** www.timken.com

Part Number QAC08A107S, Single Concentric Piloted Flange Cartridge



[Specifications](#) | [Dimensions](#) | [Radial and Thrust Factors](#) | [Engineering Seal Speed](#) | [Engineering Bearing Attributes](#) | [Engineering Internal Radial Clearance](#)

Specifications

Engineering Group	Mounted Bearing
Bearing Number	22208
Shaft Size	1 7/16 in
Shaft Size Type	Imperial
Full Timken Part Number	QAC08A107SB QAC08A107SC QAC08A107SEB QAC08A107SEC QAC08A107SEM QAC08A107SEN QAC08A107SEO QAC08A107SET QAC08A107SM QAC08A107SN QAC08A107SO QAC08A107ST



Locking Style	Single Concentric
----------------------	-------------------

Housing Construction	Piloted Flange Cartridge
-----------------------------	--------------------------

UPC Code	883450401050
	883450401067
	883450401074
	883450401081
	883450401098
	883450401104
	883450401111
	883450401128
	883450401135
	883450401142
883450401159	
883450401166	

Dimensions

Dimension BC	4.38 in 111.3 mm
---------------------	---------------------

Dimension B Exp	2.01 in 51.1 mm
------------------------	--------------------

Dimension B Fix	1.96 in 49.8 mm
------------------------	--------------------

Dimension C	2.38 in 60.5 mm
--------------------	--------------------

Dimension D	3.63 in 92.2 mm
--------------------	--------------------

Dimension E	3.09 in 78.5 mm
--------------------	--------------------

Dimension F	5 1/4 in 133.4 mm
--------------------	----------------------

Dimension G	3.625 in 92.1 mm
--------------------	---------------------

Dimension H	0.5 in 12.7 mm
Dimension J (Bolt Size)	0.438 in 10 mm
Dimension KA	1 in 25.4 mm
Dimension L Exp	2.95 in 74.9 mm
Dimension L Fix	2.9 in 73.7 mm
Dimension M	1.75 in 44.5 mm
Dimension N	0.94 in 23.9 mm
Dimension RA	0.15 in 3.8 mm
Dimension SA	2.75 in 69.9 mm

Radial and Thrust Factors

C0 - Static Load	22400 lbf 99700 N
C - Dynamic Load (Basic)	23400 lbf 104000 N
e - Geometry Factor	0.27
Y1 - Geometry Factor	2.47
Y2 - Geometry Factor	3.67

Engineering Seal Speed

Oil Lubrication - M/N Seal	2700 rpm
-----------------------------------	----------

Oil Lubrication - T Seal	4500 rpm
---------------------------------	----------

Oil Lubrication - B/C/O Seal	1950 rpm
-------------------------------------	----------

Grease Lubrication - M/N Seal	2700 rpm
--------------------------------------	----------

Grease Lubrication - T Seal	4000 rpm
------------------------------------	----------

Grease Lubrication - B/C/O Seal	1950 rpm
--	----------

Engineering Bearing Attributes

Float	0.050 in 1.270 mm
--------------	----------------------

Shaft Tolerance	0.0010 in 0.025 mm
------------------------	-----------------------

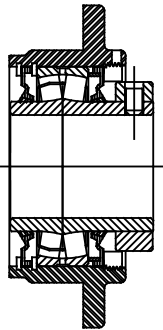
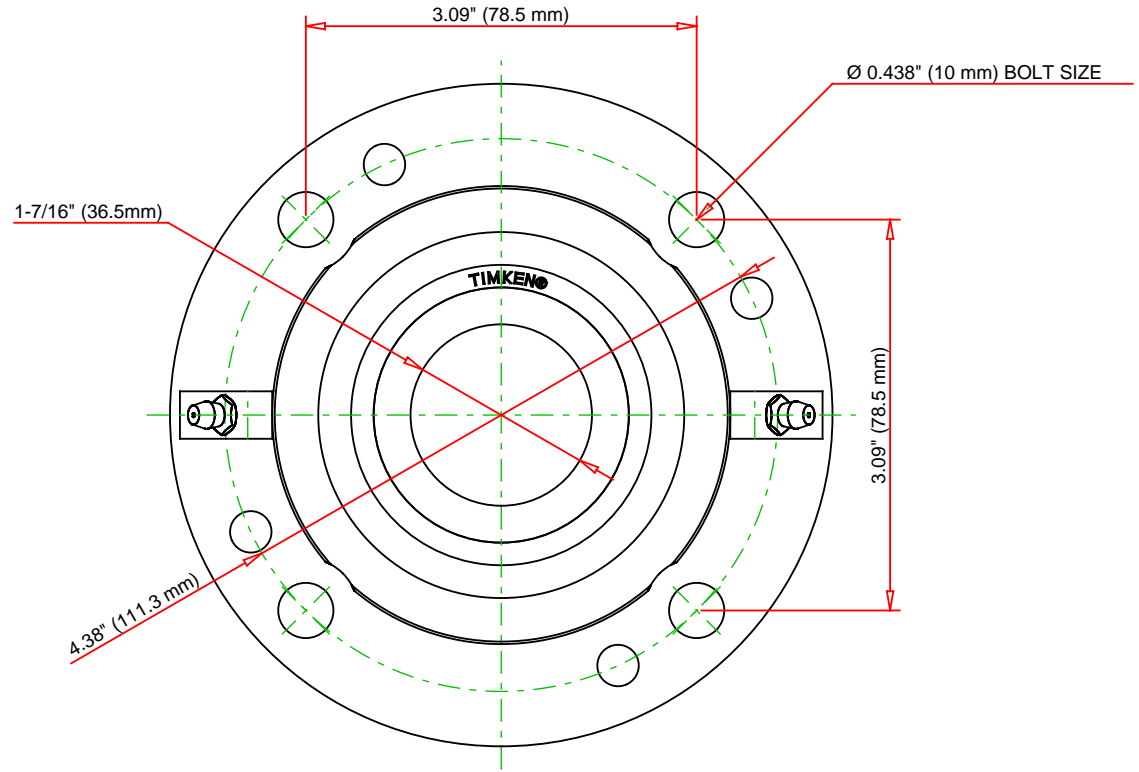
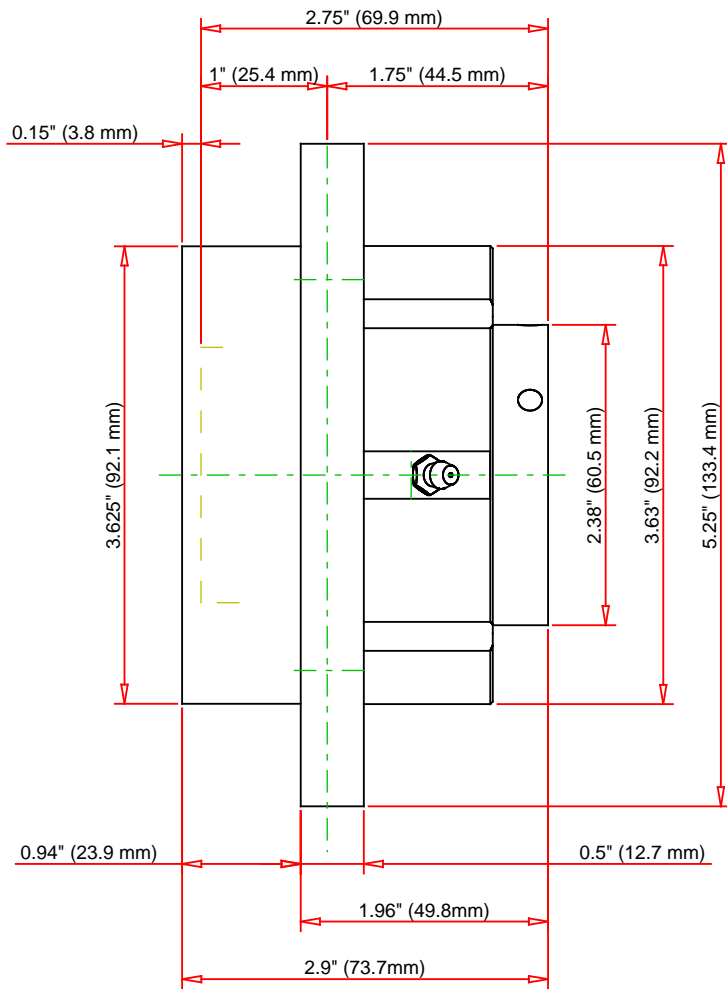
Engineering Internal Radial Clearance

Eng Internal Radial Clearance - Min	0.0012
--	--------

Eng Internal Radial Clearance - Max	0.0018
--	--------

Pre Install Clearance Min	0.0012 in 0.030 mm
----------------------------------	-----------------------

Pre Install Clearance Max	0.0018 in 0.045 mm
----------------------------------	-----------------------



Note: Section View not to Scale

C - Dynamic Load	23400	lbf	104000	N
C0 - Static Load	22400	lbf	99700	N
Weight	8	lb	3.6	kg
Max. Speed T-Seals & Grease	4000	rpm		
Rad. Clearance - Max.	0.0018			

TIMKEN

THE TIMKEN COMPANY
NORTH CANTON, OHIO USA

QAC08A107S

Single Concentric Piloted Flange
Cartridge

Every reasonable effort has been made to ensure the accuracy of the information contained in this writing, but no liability is accepted for errors, omissions or for any other reason.

FOR DISCUSSION ONLY