



The Timken Company

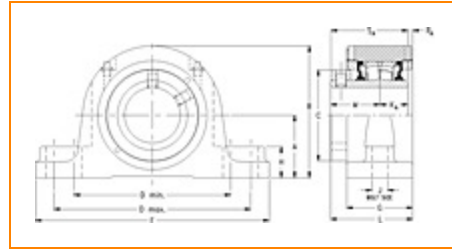
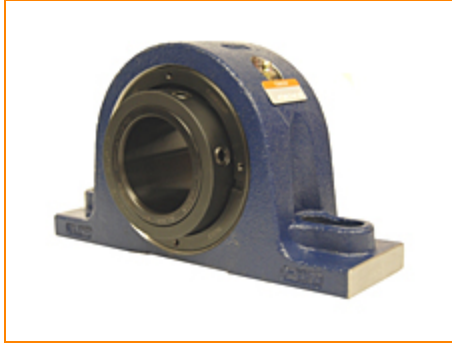
4500 Mt Pleasant St. NW

N. Canton, OH 44720

Phone: (234) 262-3000

E-Mail: CustomerCAD@timken.com • **Web site:** www.timken.com

Part Number QAPL08A108S, Single Concentric Two-Bolt Pillow Block



[Specifications](#) | [Dimensions](#) | [Radial and Thrust Factors](#) | [Engineering Seal Speed](#) | [Engineering Bearing Attributes](#) | [Engineering Internal Radial Clearance](#)

Specifications

Engineering Group Mounted Bearing

Bearing Number 22208

Shaft Size 1 1/2 in

Shaft Size Type Imperial

Full Timken Part Number

- QAPL08A108SB
- QAPL08A108SC
- QAPL08A108SEB
- QAPL08A108SEC
- QAPL08A108SEM
- QAPL08A108SEN
- QAPL08A108SEO
- QAPL08A108SET
- QAPL08A108SM
- QAPL08A108SN
- QAPL08A108SO



QAPL08A108ST

Locking Style

Single Concentric

Housing Construction

Two-Bolt Pillow Block

UPC Code

883450403696
 883450403702
 883450403719
 883450403726
 883450403733
 883450403740
 883450403757
 883450403764
 883450403771
 883450403788
 883450403795
 883450403801

Dimensions**Dimension A**

1.88 in
 47.8 mm

Dimension B

3.73 in
 94.7 mm

Dimension C

2.38 in
 60.5 mm

Dimension D Min

4.69 in
 119.1 mm

Dimension D Max

6 in
 152.4 mm

Dimension F

6.88 in
 174.8 mm

Dimension G

2.25 in
 57.2 mm

Dimension H

1 in
 25.4 mm

Dimension J (Bolt Size)	0.5 in 12 mm
Dimension KA	1 in 25.4 mm
Dimension L	2.88 in 73.2 mm
Dimension M	1.75 in 44.5 mm
Dimension RA	0.13 in 3.3 mm
Dimension SA	2.75 in 69.9 mm

Radial and Thrust Factors

C0 - Static Load	22400 lbf 99700 N
C - Dynamic Load (Basic)	23400 lbf 104000 N
e - Geometry Factor	0.27
Y1 - Geometry Factor	2.47
Y2 - Geometry Factor	3.67

Engineering Seal Speed

Oil Lubrication - M/N Seal	2700 rpm
Oil Lubrication - T Seal	4500 rpm
Oil Lubrication - B/C/O Seal	1950 rpm
Grease Lubrication - M/N Seal	2700 rpm

Grease Lubrication - T Seal	4000 rpm
------------------------------------	----------

Grease Lubrication - B/C/O Seal	1950 rpm
--	----------

Engineering Bearing Attributes

Float	0.050 in 1.270 mm
--------------	----------------------

Shaft Tolerance	0.0010 in 0.025 mm
------------------------	-----------------------

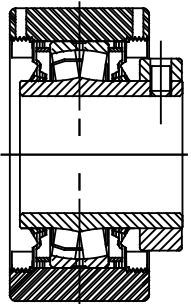
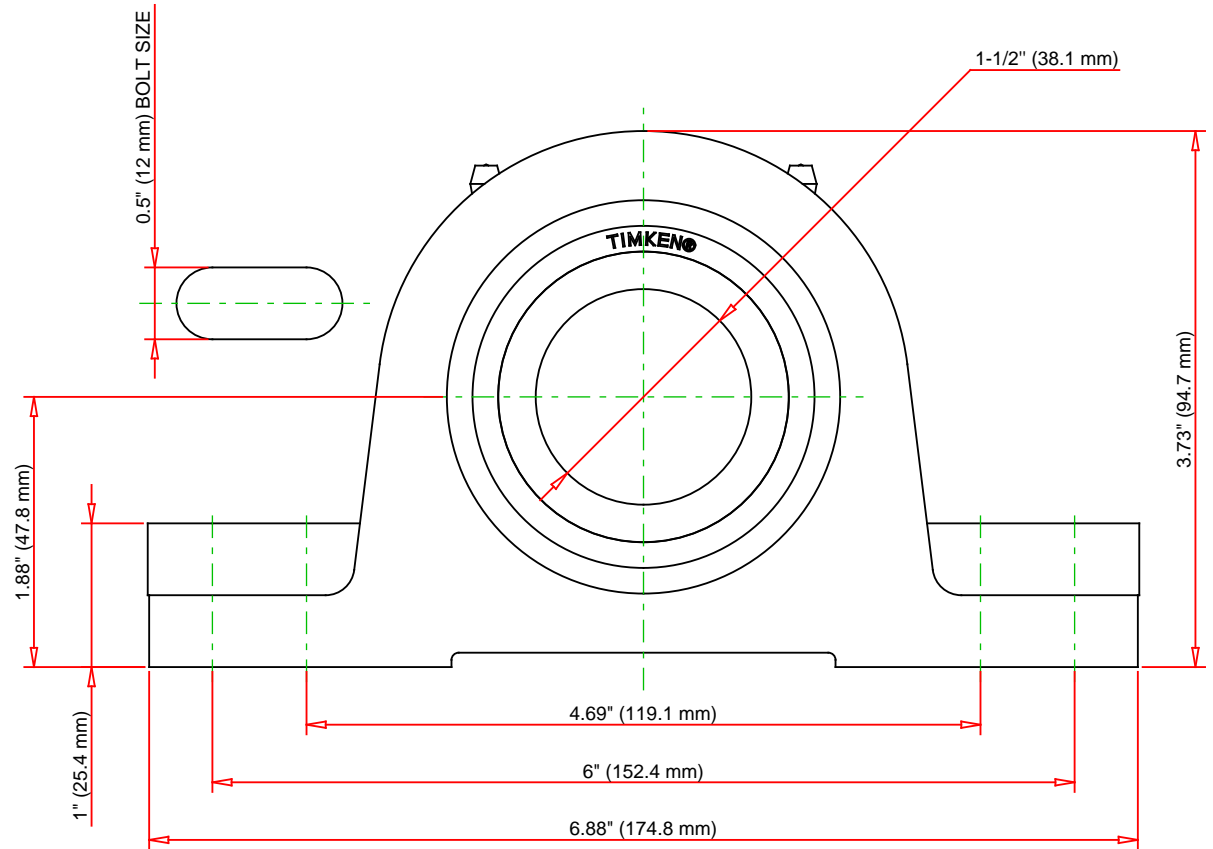
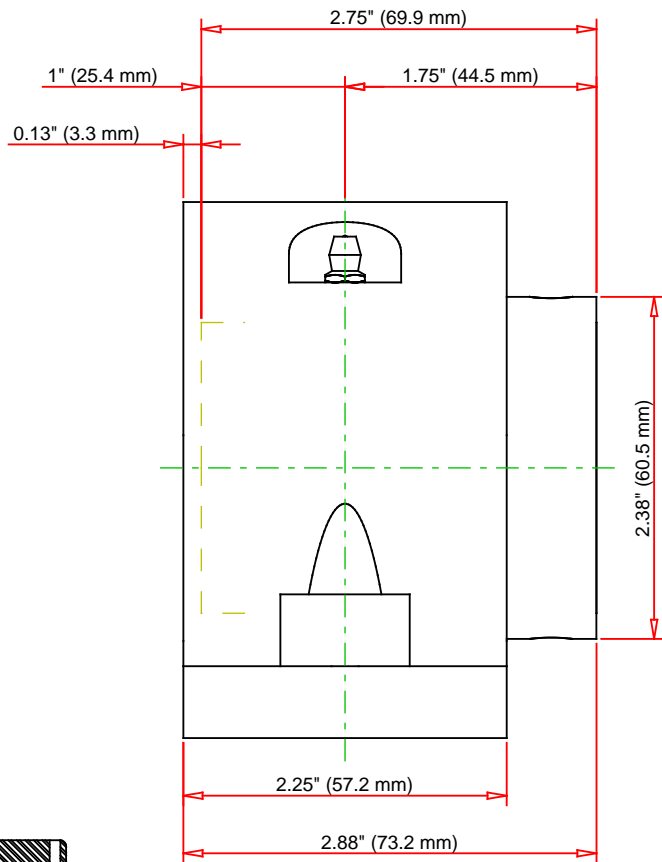
Engineering Internal Radial Clearance

Eng Internal Radial Clearance - Min	0.0012
--	--------

Eng Internal Radial Clearance - Max	0.0018
--	--------

Pre Install Clearance Min	0.0012 in 0.030 mm
----------------------------------	-----------------------

Pre Install Clearance Max	0.0018 in 0.045 mm
----------------------------------	-----------------------



Note: Section View not to Scale

C - Dynamic Load	23400	lbf	104000	N
C0 - Static Load	22400	lbf	99700	N
Weight	9	lb	4.1	kg
Max. Speed T-Seals & Grease	4000	rpm		
Rad. Clearance - Max.	0.0018			

TIMKEN

THE TIMKEN COMPANY
NORTH CANTON, OHIO USA

QAPL08A108S

Single Concentric Two-Bolt Pillow Block

Every reasonable effort has been made to ensure the accuracy of the information contained in this writing, but no liability is accepted for errors, omissions or for any other reason.

FOR DISCUSSION ONLY