



The Timken Company

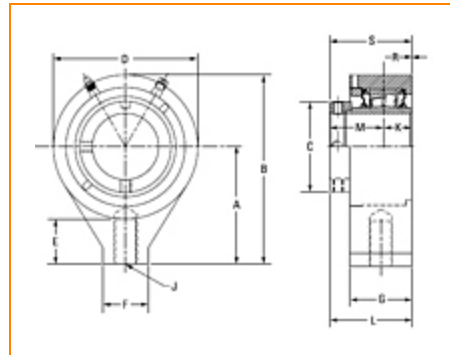
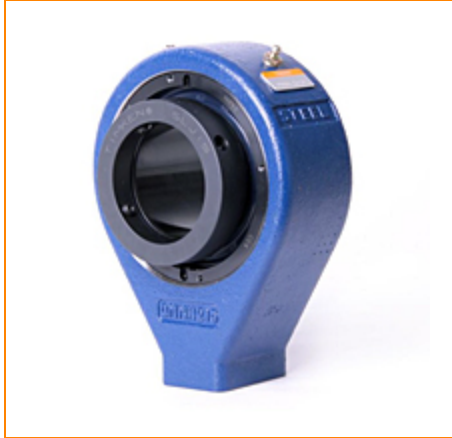
4500 Mt Pleasant St. NW

N. Canton, OH 44720

Phone: (234) 262-3000

E-Mail: CustomerCAD@timken.com • **Web site:** www.timken.com

Part Number QMMH15J215S, Eccentric Hanger Block



[Specifications](#) | [Dimensions](#) | [Radial and Thrust Factors](#) | [Engineering Seal Speed](#) | [Engineering Bearing Attributes](#) | [Engineering Internal Radial Clearance](#)

Specifications

Engineering Group Mounted Bearing

Bearing Number 22215

Shaft Size 2 15/16 in

Shaft Size Type Imperial

Full Timken Part Number

- QMMH15J215SB
- QMMH15J215SC
- QMMH15J215SEB
- QMMH15J215SEC
- QMMH15J215SEM
- QMMH15J215SEN
- QMMH15J215SEO
- QMMH15J215SET
- QMMH15J215SM
- QMMH15J215SN
- QMMH15J215SO



QMMH15J215ST

Locking Style

Eccentric

UPC Code

0883450410199
 0883450417952
 0883450417969
 0883450417976
 0883450417983
 0883450417990
 0883450418003
 0883450418010
 0883450418027
 0883450418034
 0883450418041
 0883450418058

Dimensions**Dimension A**

5.19 in
 131.8 mm

Dimension B

8.38 in
 212.9 mm

Dimension C

4.01 in
 101.9 mm

Dimension D

6.38 in
 162.1 mm

Dimension E

2.0 in
 50.8 mm

Dimension F

2 in
 50.8 mm

Dimension G

2.75 in
 69.9 mm

Dimension K

1.25 in
 31.8 mm

Dimension L	3.62 in 91.9 mm
Dimension M	2.37 in 60.2 mm
Dimension R	0 in 0 mm
Dimension S	3.62 in 91.9 mm
Thread Size J	1-8UNC

Radial and Thrust Factors

C0 - Static Load	54100 lbf 240000 N
C - Dynamic Load (Basic)	49900 lbf 222000 N
e - Geometry Factor	0.22
Y1 - Geometry Factor	3.14
Y2 - Geometry Factor	4.67

Engineering Seal Speed

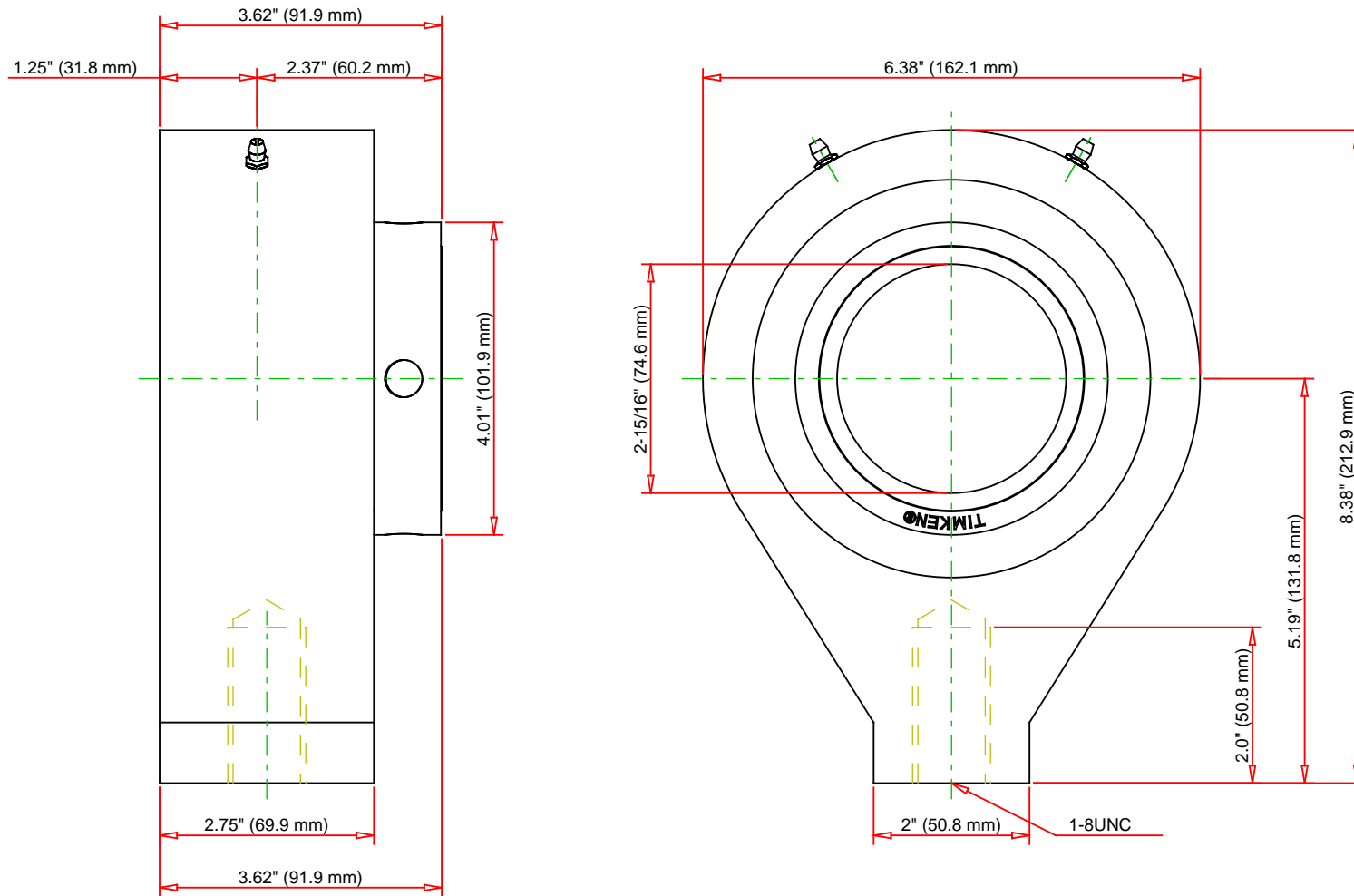
Oil Lubrication - M/N Seal	1600 rpm
Oil Lubrication - T Seal	2900 rpm
Oil Lubrication - B/C/O Seal	1300 rpm
Grease Lubrication - M/N Seal	1600 rpm
Grease Lubrication - T Seal	2400 rpm
Grease Lubrication - B/C/O Seal	1300 rpm

Engineering Bearing Attributes

Float	0.083 in 2.108 mm
Shaft Tolerance	0.0020 in 0.051 mm

Engineering Internal Radial Clearance

Eng Internal Radial Clearance - Min	0.0020
Eng Internal Radial Clearance - Max	0.0031
Pre Install Clearance Min	0.0020 in 0.050 mm
Pre Install Clearance Max	0.0031 in 0.080 mm



Note: Section View not to Scale

C - Dynamic Load	49900	lbf	222000	N
C0 - Static Load	54100	lbf	240000	N
Weight	22	lb	10	kg
Max. Speed T-Seals & Grease	2400	rpm		
Rad. Clearance - Max.	0.0031			

TIMKEN

THE TIMKEN COMPANY
NORTH CANTON, OHIO USA

QMMH15J215S
Eccentric Hanger Block

Every reasonable effort has been made to ensure the accuracy of the information contained in this writing, but no liability is accepted for errors, omissions or for any other reason.

FOR DISCUSSION ONLY