



**The Timken Company**

4500 Mt Pleasant St. NW

N. Canton, OH 44720

**Phone:** (234) 262-3000

**E-Mail:** [CustomerCAD@timken.com](mailto:CustomerCAD@timken.com) • **Web site:** [www.timken.com](http://www.timken.com)

## Part Number QAATU22A407S, Double Concentric Take-Up Block



[Specifications](#) | [Dimensions](#) | [Radial and Thrust Factors](#) | [Engineering Seal Speed](#) | [Engineering Bearing Attributes](#) | [Engineering Internal Radial Clearance](#)

### Specifications

**Engineering Group** Mounted Bearing

**Bearing Number** 22222

**Shaft Size** 4 7/16 in

**Shaft Size Type** Imperial

**Full Timken Part Number**

- QAATU22A407SB
- QAATU22A407SC
- QAATU22A407SEB
- QAATU22A407SEC
- QAATU22A407SEM
- QAATU22A407SEN
- QAATU22A407SEO
- QAATU22A407SET
- QAATU22A407SM
- QAATU22A407SN
- QAATU22A407SO



QAATU22A407ST

**Locking Style** Double Concentric

**Housing Construction** Take-Up

**UPC Code**

883450414043  
 883450414050  
 883450414067  
 883450414074  
 883450414081  
 883450414098  
 883450414104  
 883450414111  
 883450414128  
 883450414135  
 883450414142  
 883450414159

## Dimensions

**Dimension A1**

5.06 in  
 128.5 mm

**Dimension C**

1.5 in  
 38.1 mm

**Dimension D**

10.38 in  
 263.7 mm

**Dimension E**

9.5 in  
 241.3 mm

**Dimension F**

2.13 in  
 54.1 mm

**Dimension G**

2.13 in  
 54.1 mm

**Dimension J**

6.38 in  
 162.1 mm

**Dimension L**

13.44 in  
 341.4 mm

<b>Dimension M</b>	3.13 in 79.5 mm
<b>Dimension N</b>	5.66 in 143.8 mm
<b>Dimension P</b>	7.87 in 199.9 mm
<b>Dimension S</b>	2.06 in 52.3 mm

### Radial and Thrust Factors

<b>C0 - Static Load</b>	147000 lbf 653000 N
<b>C - Dynamic Load (Basic)</b>	125000 lbf 555000 N
<b>e - Geometry Factor</b>	0.25
<b>Y1 - Geometry Factor</b>	2.73
<b>Y2 - Geometry Factor</b>	4.06

### Engineering Seal Speed

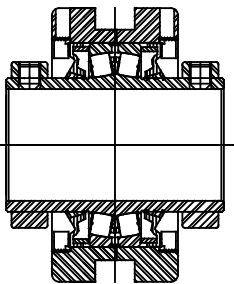
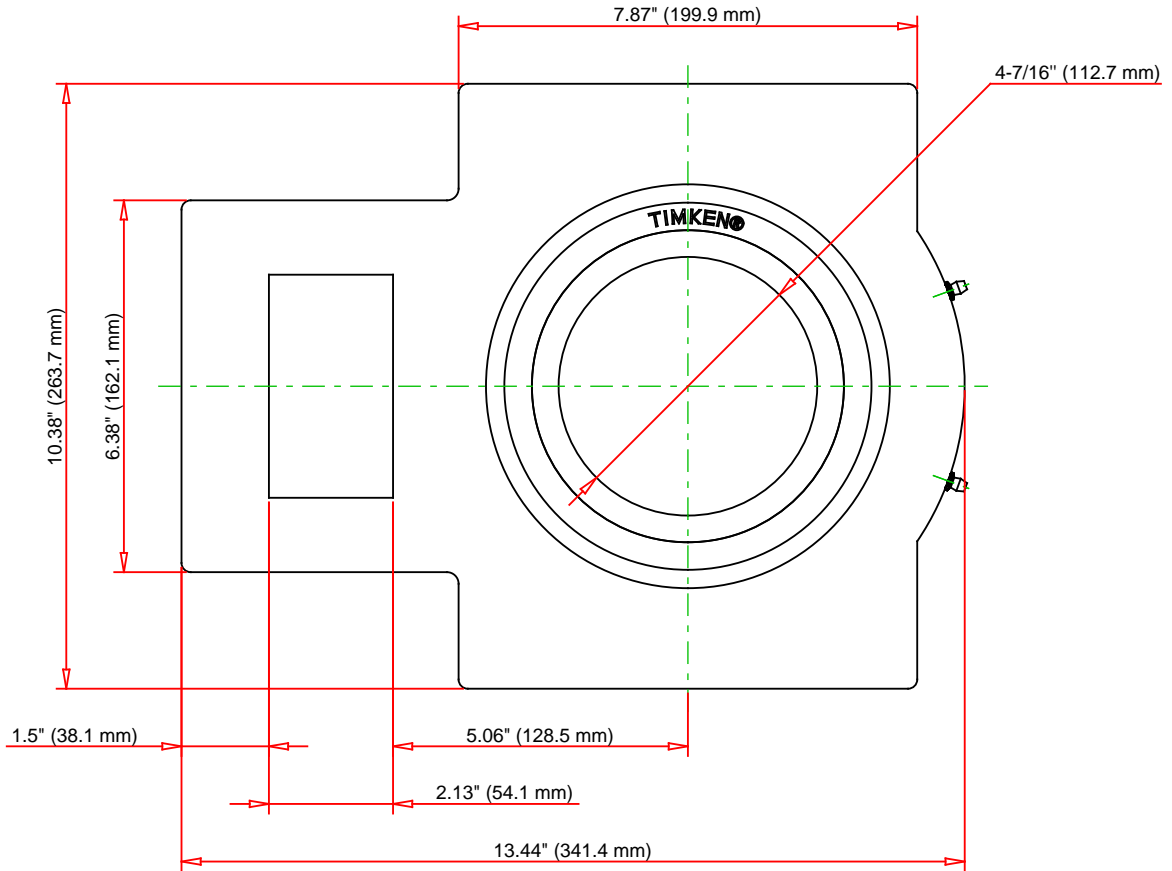
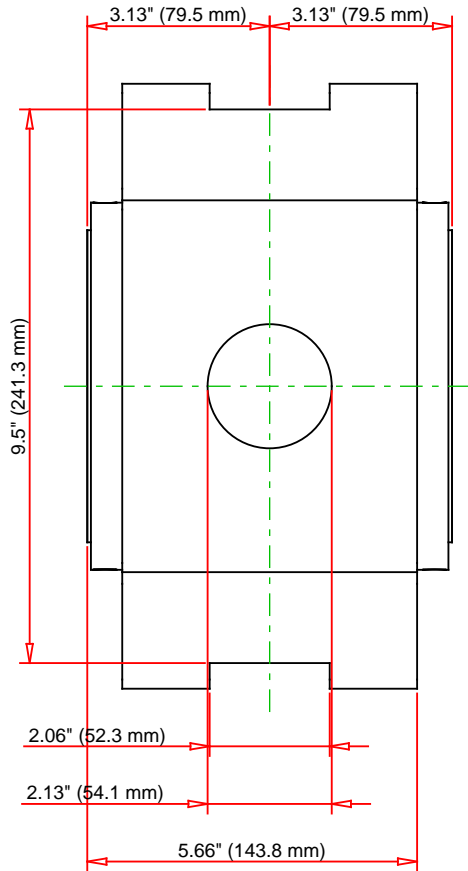
<b>Oil Lubrication - M/N Seal</b>	900 rpm
<b>Oil Lubrication - T Seal</b>	1700 rpm
<b>Oil Lubrication - B/C/O Seal</b>	600 rpm
<b>Grease Lubrication - M/N Seal</b>	900 rpm
<b>Grease Lubrication - T Seal</b>	1200 rpm
<b>Grease Lubrication - B/C/O Seal</b>	600 rpm

### Engineering Bearing Attributes

<b>Float</b>	0.08 in 2.03 mm
<b>Shaft Tolerance</b>	0.0050 in 0.127 mm

## Engineering Internal Radial Clearance

<b>Eng Internal Radial Clearance - Min</b>	0.0030
<b>Eng Internal Radial Clearance - Max</b>	0.0047
<b>Pre Install Clearance Min</b>	0.0030 in 0.075 mm
<b>Pre Install Clearance Max</b>	0.0047 in 0.120 mm



Note: Section View not to Scale

C - Dynamic Load	125000	lbf	555000	N
C0 - Static Load	147000	lbf	653000	N
Weight	80	lb	36.4	kg
Max. Speed T-Seals & Grease	1200	rpm		
Rad. Clearance - Max.	0.0047			

**TIMKEN**

THE TIMKEN COMPANY  
NORTH CANTON, OHIO USA

**QAATU22A407S**  
Double Concentric Take-Up Block

Every reasonable effort has been made to ensure the accuracy of the information contained in this writing, but no liability is accepted for errors, omissions or for any other reason.

**FOR DISCUSSION ONLY**