



The Timken Company

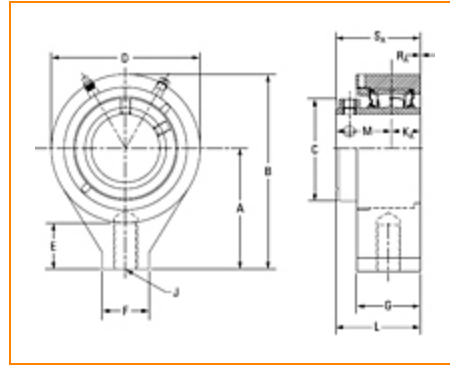
4500 Mt Pleasant St. NW

N. Canton, OH 44720

Phone: (234) 262-3000

E-Mail: CustomerCAD@timken.com • **Web site:** www.timken.com

Part Number QAMH15A215S, Single Concentric Hanger Block



[Specifications](#) | [Dimensions](#) | [Radial and Thrust Factors](#) | [Engineering Seal Speed](#) | [Engineering Bearing Attributes](#) | [Engineering Internal Radial Clearance](#)

Specifications

Engineering Group Mounted Bearing

Bearing Number 22215

Shaft Size 2 15/16 in

Shaft Size Type Imperial

Full Timken Part Number

- QAMH15A215SB
- QAMH15A215SC
- QAMH15A215SEB
- QAMH15A215SEC
- QAMH15A215SEM
- QAMH15A215SEN
- QAMH15A215SEO
- QAMH15A215SET
- QAMH15A215SM
- QAMH15A215SN



QAMH15A215SNHT

QAMH15A215SO

QAMH15A215ST

QAMH15A215STHT

Locking Style

Single Concentric

UPC Code

0883450415231

0883450415248

0883450415255

0883450415262

0883450415279

0883450415286

0883450415293

0883450415309

0883450415316

0883450415323

0883450415330

0883450415347

0883450472524

0883450491860

Dimensions**Dimension A**5.19 in
131.8 mm**Dimension B**8.38 in
212.9 mm**Dimension C**4.29 in
109 mm**Dimension D**6.38 in
162.1 mm**Dimension E**2.0 in
50.8 mm**Dimension F**2 in
50.8 mm**Dimension G**2.75 in
69.9 mm

Dimension KA	1.25 in 31.8 mm
---------------------	--------------------

Dimension L	3.62 in 91.9 mm
--------------------	--------------------

Dimension M	2.37 in 60.2 mm
--------------------	--------------------

Dimension RA	0 in 0 mm
---------------------	--------------

Dimension SA	3.62 in 91.9 mm
---------------------	--------------------

Thread Size J	1-8UNC
----------------------	--------

Radial and Thrust Factors

C0 - Static Load	54100 lbf 240000 N
-------------------------	-----------------------

C - Dynamic Load (Basic)	49900 lbf 222000 N
---------------------------------	-----------------------

e - Geometry Factor	0.22
----------------------------	------

Y1 - Geometry Factor	3.14
-----------------------------	------

Y2 - Geometry Factor	4.67
-----------------------------	------

Engineering Seal Speed

Oil Lubrication - M/N Seal	1600 rpm
-----------------------------------	----------

Oil Lubrication - T Seal	2900 rpm
---------------------------------	----------

Oil Lubrication - B/C/O Seal	1300 rpm
-------------------------------------	----------

Grease Lubrication - M/N Seal	1600 rpm
--------------------------------------	----------

Grease Lubrication - T Seal	2400 rpm
------------------------------------	----------

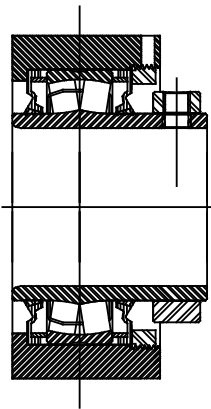
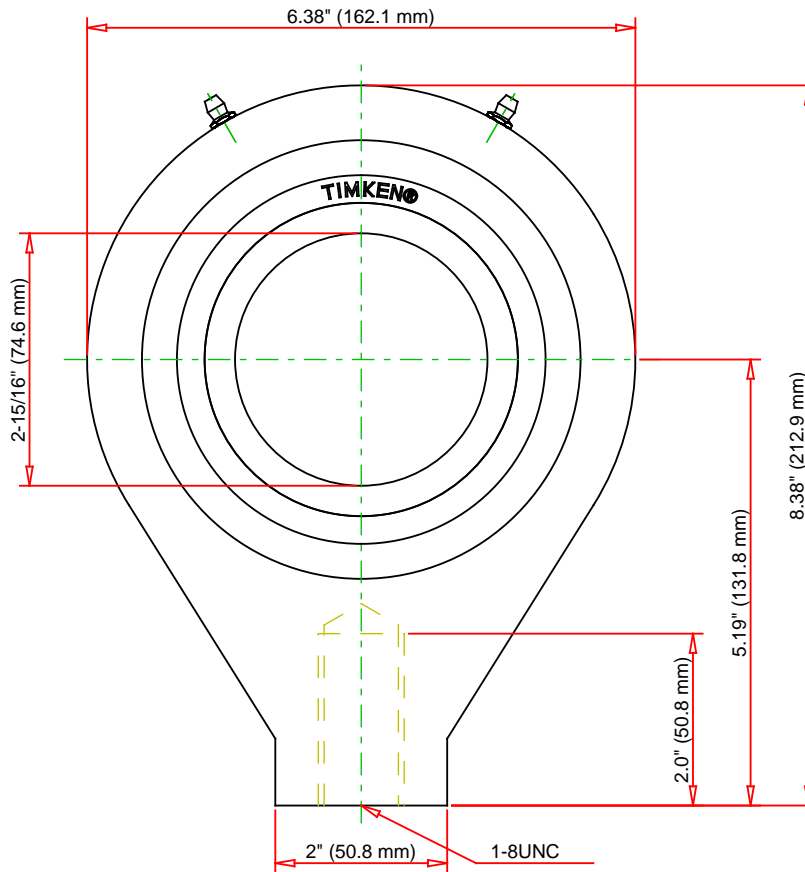
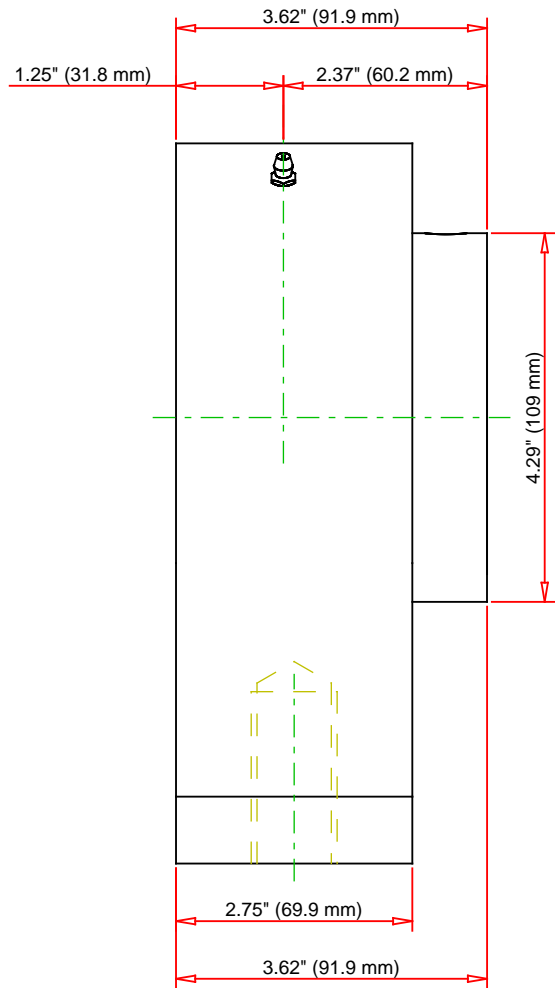
Grease Lubrication - B/C/O Seal 1300 rpm

Engineering Bearing Attributes

Float	0.083 in 2.108 mm
Shaft Tolerance	0.0020 in 0.051 mm

Engineering Internal Radial Clearance

Eng Internal Radial Clearance - Min	0.0020
Eng Internal Radial Clearance - Max	0.0031
Pre Install Clearance Min	0.0020 in 0.050 mm
Pre Install Clearance Max	0.0031 in 0.080 mm



Note: Section View not to Scale

C - Dynamic Load	49900	lbf	222000	N
C0 - Static Load	54100	lbf	240000	N
Weight	22	lb	10	kg
Max. Speed T-Seals & Grease	2400	rpm		
Rad. Clearance - Max.	0.0031			

TIMKEN

THE TIMKEN COMPANY
NORTH CANTON, OHIO USA

QAMH15A215S
Single Concentric Hanger Block

Every reasonable effort has been made to ensure the accuracy of the information contained in this writing, but no liability is accepted for errors, omissions or for any other reason.

FOR DISCUSSION ONLY