



**The Timken Company**

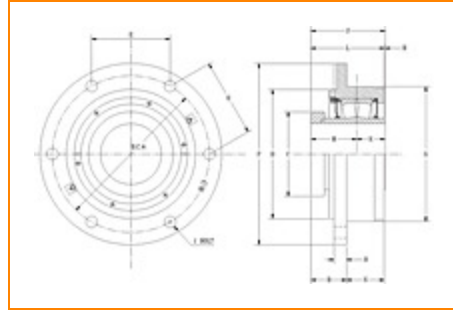
4500 Mt Pleasant St. NW

N. Canton, OH 44720

**Phone:** (234) 262-3000

**E-Mail:** [CustomerCAD@timken.com](mailto:CustomerCAD@timken.com) • **Web site:** [www.timken.com](http://www.timken.com)

## Part Number QMCW30J507S, Eccentric Piloted Flange Cartridge



[Specifications](#) | [Dimensions](#) | [Radial and Thrust Factors](#) | [Engineering Seal Speed](#) | [Engineering Bearing Attributes](#) | [Engineering Internal Radial Clearance](#)

### Specifications

**Engineering Group** Mounted Bearing

**Bearing Number** 23230

**Shaft Size** 5 7/16 in

**Shaft Size Type** Imperial

**Full Timken Part Number**

- QMCW30J507SB
- QMCW30J507SC
- QMCW30J507SEB
- QMCW30J507SEC
- QMCW30J507SEM
- QMCW30J507SEN
- QMCW30J507SEO
- QMCW30J507SET
- QMCW30J507SM
- QMCW30J507SMB
- QMCW30J507SMNG
- QMCW30J507SMNP
- QMCW30J507SN



QMCW30J507SO  
QMCW30J507ST

**Locking Style**

Eccentric

**Housing Construction**

Piloted Flange Cartridge

**UPC Code**

0883450064828  
0883450064835  
0883450064859  
0883450064866  
0883450064873  
0883450064880  
0883450064897  
0883450064903  
0883450166768  
0883450167482  
0883450258944  
0883450259484  
0883450458535  
0883450956079  
0883450963817

**Dimensions****Dimension BC**

14.5 in  
368.3 mm

**Dimension B Exp**

3.34 in  
84.8 mm

**Dimension B Fix**

3.26 in  
82.8 mm

**Dimension C**

8.07 in  
205 mm

**Dimension D**

12 in  
304.8 mm

**Dimension E**

7.25 in  
184.2 mm

|                                |                          |
|--------------------------------|--------------------------|
| <b>Dimension F</b>             | 17.0000 in<br>431.800 mm |
| <b>Dimension G</b>             | 13 in<br>330.2 mm        |
| <b>Dimension H</b>             | 1.03 in<br>26.2 mm       |
| <b>Dimension J (Bolt Size)</b> | 0.875 in<br>24 mm        |
| <b>Dimension K</b>             | 2.99 in<br>75.9 mm       |
| <b>Dimension L Exp</b>         | 8.12 in<br>206.2 mm      |
| <b>Dimension L Fix</b>         | 8.04 in<br>204.2 mm      |
| <b>Dimension M</b>             | 4.57 in<br>116.1 mm      |
| <b>Dimension N</b>             | 4.78 in<br>121.4 mm      |
| <b>Dimension R</b>             | 0.48 in<br>12.2 mm       |
| <b>Dimension S</b>             | 7.56 in<br>192 mm        |

## Radial and Thrust Factors

|                                 |                         |
|---------------------------------|-------------------------|
| <b>C0 - Static Load</b>         | 372000 lbf<br>1660000 N |
| <b>C - Dynamic Load (Basic)</b> | 286000 lbf<br>1270000 N |
| <b>e - Geometry Factor</b>      | 0.32                    |
| <b>Y1 - Geometry Factor</b>     | 2.08                    |

|                             |      |
|-----------------------------|------|
| <b>Y2 - Geometry Factor</b> | 3.10 |
|-----------------------------|------|

### Engineering Seal Speed

|                                   |         |
|-----------------------------------|---------|
| <b>Oil Lubrication - M/N Seal</b> | 650 rpm |
|-----------------------------------|---------|

|                                 |         |
|---------------------------------|---------|
| <b>Oil Lubrication - T Seal</b> | 950 rpm |
|---------------------------------|---------|

|                                     |         |
|-------------------------------------|---------|
| <b>Oil Lubrication - B/C/O Seal</b> | 350 rpm |
|-------------------------------------|---------|

|                                      |         |
|--------------------------------------|---------|
| <b>Grease Lubrication - M/N Seal</b> | 600 rpm |
|--------------------------------------|---------|

|                                    |         |
|------------------------------------|---------|
| <b>Grease Lubrication - T Seal</b> | 800 rpm |
|------------------------------------|---------|

|  |         |
|--|---------|
| <b>Grease Lubrication - B/C/O Seal</b> | 350 rpm |
|--|---------|

### Engineering Bearing Attributes

|              |                      |
|--------------|----------------------|
| <b>Float</b> | 0.083 in<br>2.108 mm |
|--------------|----------------------|

|                        |                       |
|------------------------|-----------------------|
| <b>Shaft Tolerance</b> | 0.0050 in<br>0.127 mm |
|------------------------|-----------------------|

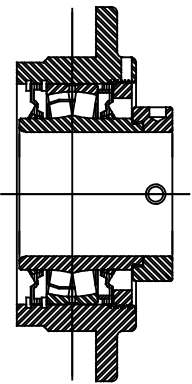
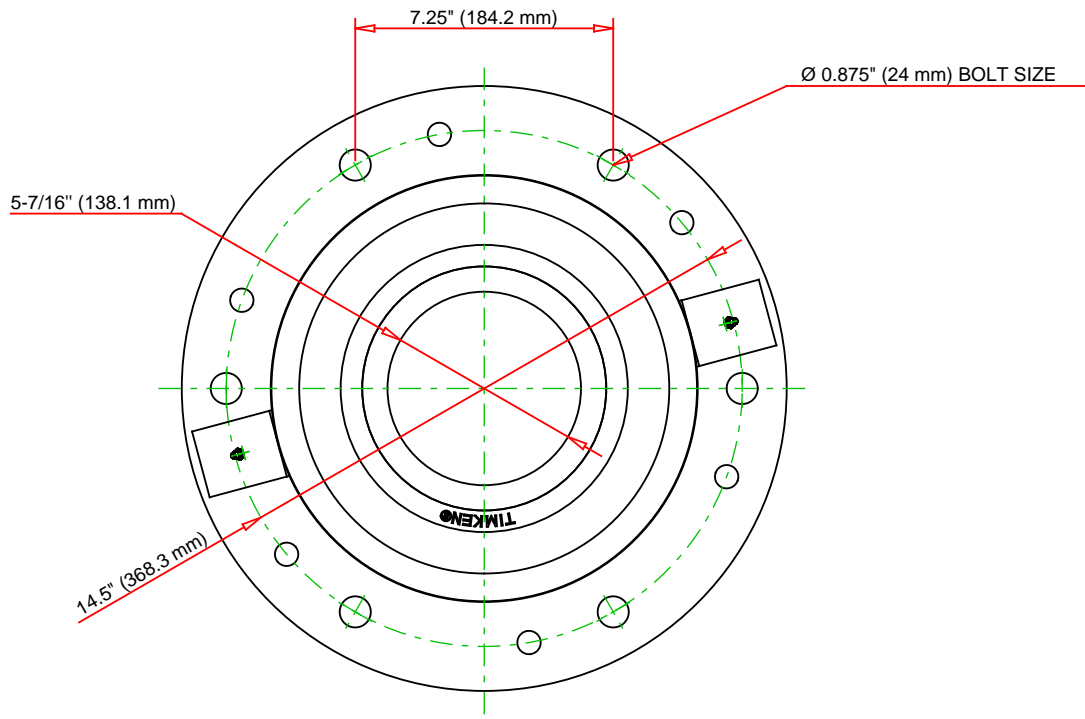
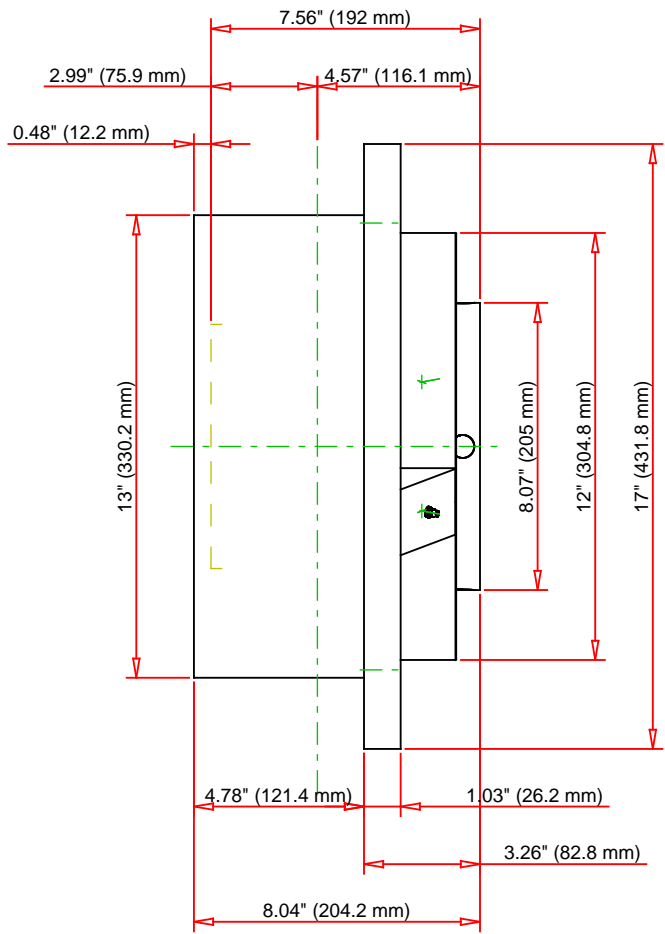
### Engineering Internal Radial Clearance

|  |        |
|--|--------|
| <b>Eng Internal Radial Clearance - Min</b> | 0.0043 |
|--|--------|

|  |        |
|--|--------|
| <b>Eng Internal Radial Clearance - Max</b> | 0.0067 |
|--|--------|

|                                  |                       |
|----------------------------------|-----------------------|
| <b>Pre Install Clearance Min</b> | 0.0043 in<br>0.110 mm |
|----------------------------------|-----------------------|

|                                  |                       |
|----------------------------------|-----------------------|
| <b>Pre Install Clearance Max</b> | 0.0067 in<br>0.170 mm |
|----------------------------------|-----------------------|



Note: Section View not to Scale

|                             |        |     |         |    |
|-----------------------------|--------|-----|---------|----|
| C - Dynamic Load            | 286000 | lbf | 1270000 | N  |
| C0 - Static Load            | 372000 | lbf | 1660000 | N  |
| Weight                      | 226    | lb  | 102.5   | kg |
| Max. Speed T-Seals & Grease | 800    | rpm |         |    |
| Rad. Clearance - Max.       | 0.0067 |     |         |    |

**TIMKEN**  
THE TIMKEN COMPANY  
NORTH CANTON, OHIO USA

**QMCW30J507S**  
Eccentric Piloted Flange Cartridge

Every reasonable effort has been made to ensure the accuracy of the information contained in this writing, but no liability is accepted for errors, omissions or for any other reason.

**FOR DISCUSSION ONLY**