


**The Timken Company**

4500 Mt Pleasant St. NW

N. Canton, OH 44720

**Phone:** (234) 262-3000

**E-Mail:** [CustomerCAD@timken.com](mailto:CustomerCAD@timken.com) • **Web site:** [www.timken.com](http://www.timken.com)

## Part Number QMTP11J055S, Eccentric Top Pull Take-Up Block



[Specifications](#) | [Dimensions](#) | [Radial and Thrust Factors](#) | [Engineering Seal Speed](#) | [Engineering Bearing Attributes](#) | [Engineering Internal Radial Clearance](#)

## Specifications

**Engineering Group** Mounted Bearing

**Bearing Number** 22211

**Shaft Size** 55 mm

**Shaft Size Type** Metric

**Full Timken Part Number**

- QMTP11J055SB
- QMTP11J055SC
- QMTP11J055SEB
- QMTP11J055SEC
- QMTP11J055SEM
- QMTP11J055SEN
- QMTP11J055SEO
- QMTP11J055SET
- QMTP11J055SM
- QMTP11J055SN
- QMTP11J055SO



QMTTP11J055ST

**Locking Style**

Eccentric

**Housing Construction**

Top Pull Take-Up

**Dimensions****Dimension A1**3.25 in  
82.6 mm**Dimension B**2.87 in  
72.8 mm**Dimension C**3.12 in  
79.1 mm**Dimension D**7.63 in  
193.8 mm**Dimension E**6-1/4 in  
158.8 mm**Dimension F**1.94 in  
49.3 mm**Dimension G**2.75 in  
69.9 mm**Dimension H**3.5 in  
88.9 mm**Dimension J**1.75 in  
44.4 mm**Dimension K**1.13 in  
28.6 mm**Dimension L**7.5 in  
190.6 mm**Dimension M**1.99 in  
50.6 mm

<b>Dimension N</b>	3.49 in 88.5 mm
<b>Dimension P</b>	7 in 177.8 mm
<b>Dimension Q</b>	1.06 in 26.9 mm
<b>Dimension R</b>	0.36 in 9.1 mm
<b>Dimension S</b>	1.12 in 28.4 mm
<b>Dimension T</b>	3.12 in 79.2 mm
<b>Dimension U</b>	0.81 in 20.6 mm

### Radial and Thrust Factors

<b>C0 - Static Load</b>	31900 lbf 142000 N
<b>C - Dynamic Load (Basic)</b>	31400 lbf 140000 N
<b>e - Geometry Factor</b>	0.23
<b>Y1 - Geometry Factor</b>	2.95
<b>Y2 - Geometry Factor</b>	4.40

### Engineering Seal Speed

<b>Oil Lubrication - M/N Seal</b>	2200 rpm
<b>Oil Lubrication - T Seal</b>	3800 rpm
<b>Oil Lubrication - B/C/O Seal</b>	1600 rpm

<b>Grease Lubrication - M/N Seal</b>	2200 rpm
--------------------------------------	----------

<b>Grease Lubrication - T Seal</b>	3200 rpm
------------------------------------	----------

<b>Grease Lubrication - B/C/O Seal</b>	1600 rpm
--	----------

### Engineering Bearing Attributes

<b>Float</b>	0.050 in 1.270 mm
--------------	----------------------

<b>Shaft Tolerance</b>	0.0015 in 0.038 mm
------------------------	-----------------------

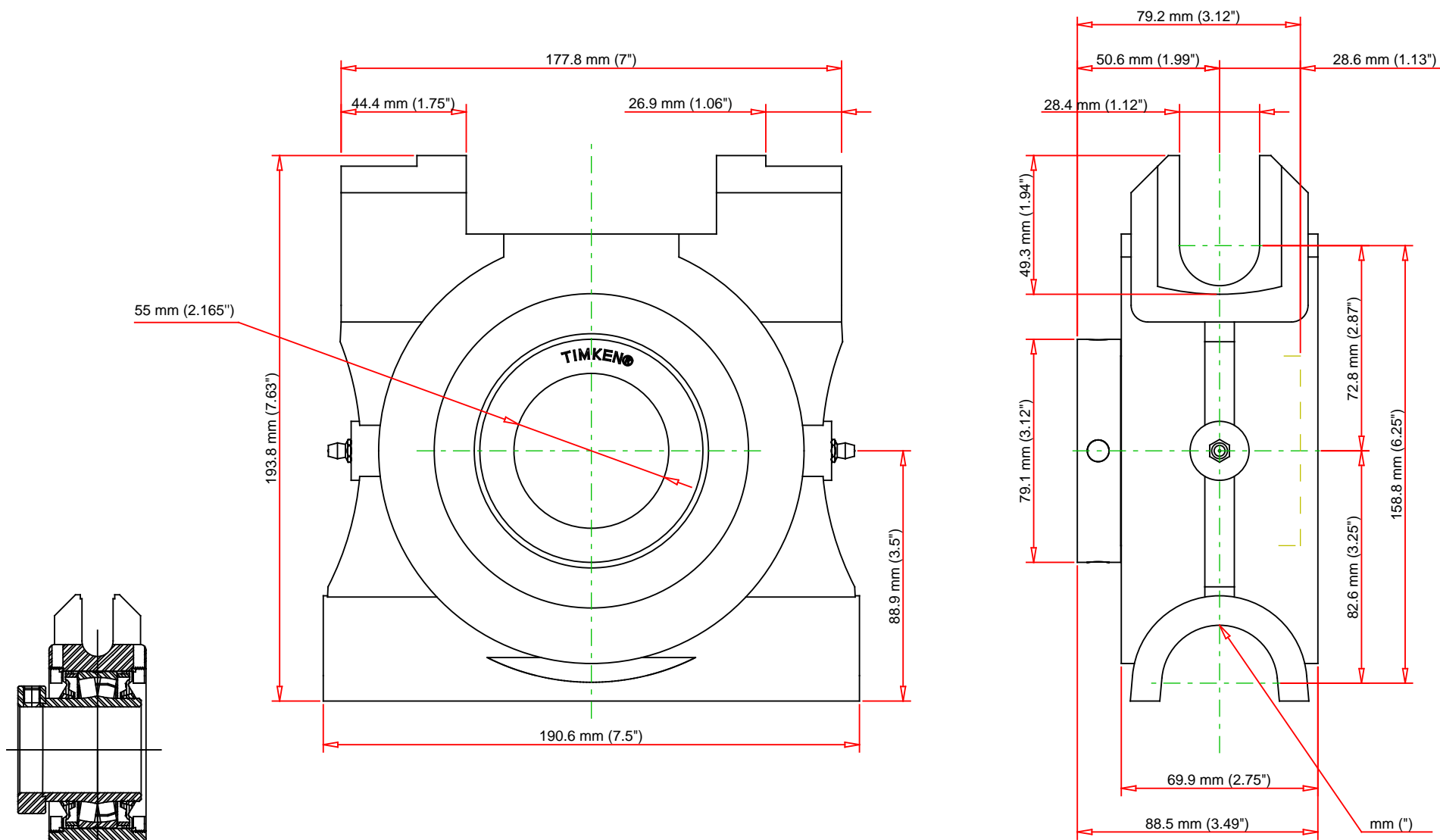
### Engineering Internal Radial Clearance

<b>Eng Internal Radial Clearance - Min</b>	0.0016
--	--------

<b>Eng Internal Radial Clearance - Max</b>	0.0026
--	--------

<b>Pre Install Clearance Min</b>	0.0016 in 0.040 mm
----------------------------------	-----------------------

<b>Pre Install Clearance Max</b>	0.0026 in 0.065 mm
----------------------------------	-----------------------



Note: Section View not to Scale

C - Dynamic Load	31400	lbf	140000	N
C0 - Static Load	31900	lbf	142000	N
Weight		lb		kg
Max. Speed T-Seals & Grease	3200	rpm		
Rad. Clearance - Max.	0.0026			

**TIMKEN**

THE TIMKEN COMPANY  
NORTH CANTON, OHIO USA

**QMTP11J055S**  
Eccentric Top Pull Take-Up Block

Every reasonable effort has been made to ensure the accuracy of the information contained in this writing, but no liability is accepted for errors, omissions or for any other reason.

**FOR DISCUSSION ONLY**