



The Timken Company

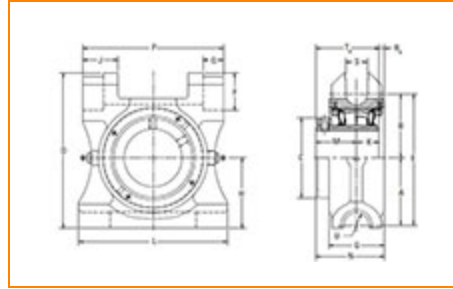
4500 Mt Pleasant St. NW

N. Canton, OH 44720

Phone: (234) 262-3000

E-Mail: CustomerCAD@timken.com • **Web site:** www.timken.com

Part Number QATP11A055S, Single Concentric Top Pull Take-Up Block



[Specifications](#) | [Dimensions](#) | [Radial and Thrust Factors](#) | [Engineering Seal Speed](#) | [Engineering Bearing Attributes](#) | [Engineering Internal Radial Clearance](#)

Specifications -

Engineering Group	Mounted Bearing
Bearing Number	22211
Shaft Size	55 mm
Shaft Size Type	Metric
Full Timken Part Number	QATP11A055SB QATP11A055SC QATP11A055SEB QATP11A055SEC QATP11A055SEM QATP11A055SEN QATP11A055SEO QATP11A055SET QATP11A055SM QATP11A055SN QATP11A055SO



QATP11A055ST

Locking Style Single Concentric**Housing Construction** Top Pull Take-Up**Dimensions****Dimension A1** 3.25 in
82.6 mm**Dimension B** 2.87 in
72.8 mm**Dimension C** 3.25 in
82.6 mm**Dimension D** 7.63 in
193.8 mm**Dimension E** 6-1/4 in
158.8 mm**Dimension F** 1.94 in
49.3 mm**Dimension G** 2.75 in
69.9 mm**Dimension H** 3.5 in
88.9 mm**Dimension J** 1.75 in
44.4 mm**Dimension K** 1.13 in
28.7 mm**Dimension L** 7.5 in
190.6 mm**Dimension M** 2 in
50.8 mm

Dimension N	3.49 in 88.5 mm
Dimension P	7 in 177.8 mm
Dimension Q	1.06 in 26.9 mm
Dimension RA	0.36 in 9 mm
Dimension S	1.12 in 28.4 mm
Dimension TA	3.13 in 79.5 mm
Dimension U	0.81 in 20.6 mm

Radial and Thrust Factors

C0 - Static Load	31900 lbf 142000 N
C - Dynamic Load (Basic)	31400 lbf 140000 N
e - Geometry Factor	0.23
Y1 - Geometry Factor	2.95
Y2 - Geometry Factor	4.40

Engineering Seal Speed

Oil Lubrication - M/N Seal	2200 rpm
Oil Lubrication - T Seal	3800 rpm
Oil Lubrication - B/C/O Seal	1600 rpm

Grease Lubrication - M/N Seal	2200 rpm
--------------------------------------	----------

Grease Lubrication - T Seal	3200 rpm
------------------------------------	----------

Grease Lubrication - B/C/O Seal	1600 rpm
--	----------

Engineering Bearing Attributes

Float	0.050 in 1.270 mm
--------------	----------------------

Shaft Tolerance	0.0015 in 0.038 mm
------------------------	-----------------------

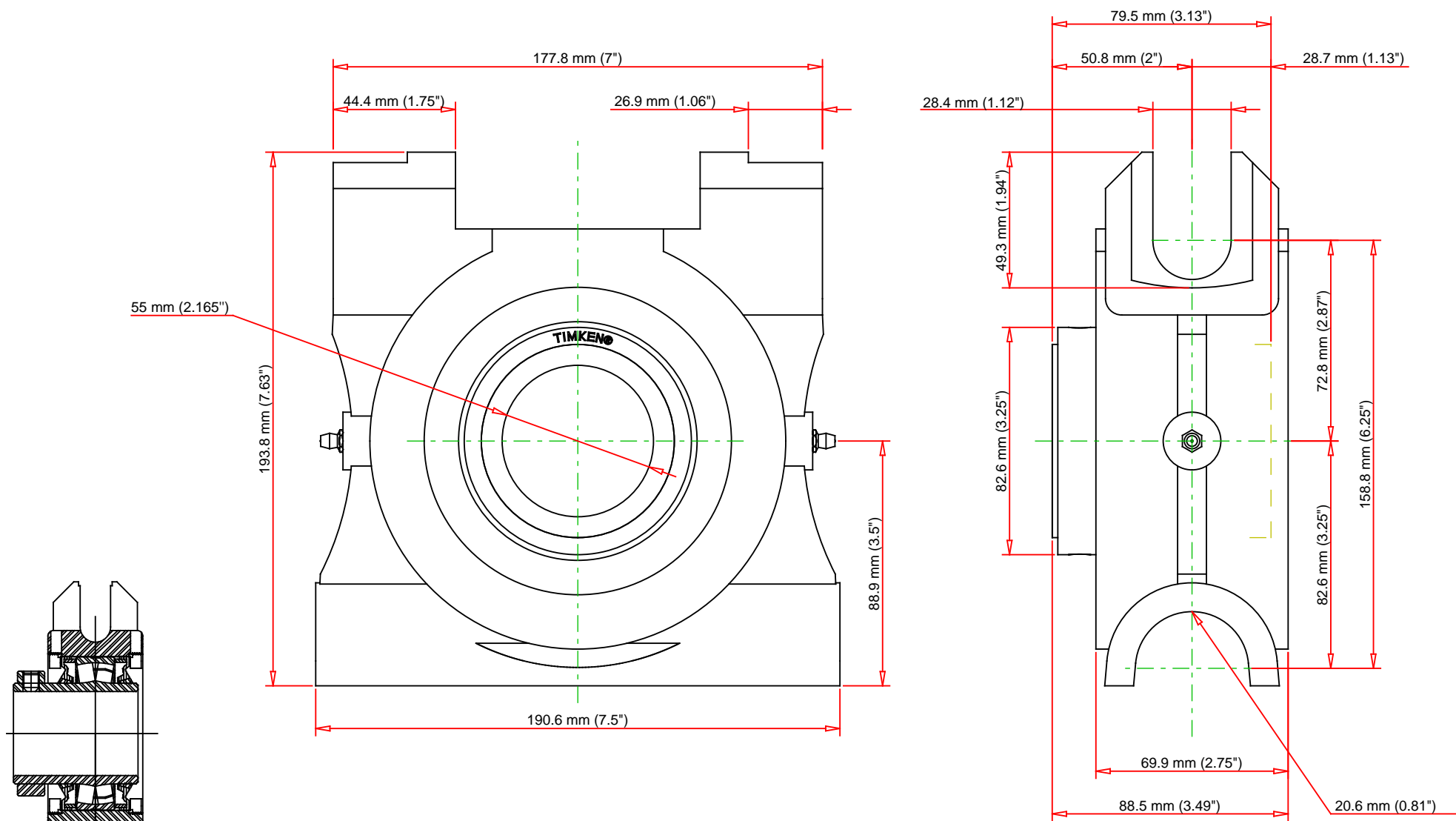
Engineering Internal Radial Clearance

Eng Internal Radial Clearance - Min	0.0016
--	--------

Eng Internal Radial Clearance - Max	0.0026
--	--------

Pre Install Clearance Min	0.0016 in 0.040 mm
----------------------------------	-----------------------

Pre Install Clearance Max	0.0026 in 0.065 mm
----------------------------------	-----------------------



Note: Section View not to Scale

C - Dynamic Load	31400	lbf	140000	N
C0 - Static Load	31900	lbf	142000	N
Weight		lb		kg
Max. Speed T-Seals & Grease	3200	rpm		
Rad. Clearance - Max.	0.0026			

TIMKEN

THE TIMKEN COMPANY
NORTH CANTON, OHIO USA

QATP11A055S
Single Concentric Top Pull Take-Up
Block

Every reasonable effort has been made to ensure the accuracy of the information contained in this writing, but no liability is accepted for errors, omissions or for any other reason.

FOR DISCUSSION ONLY